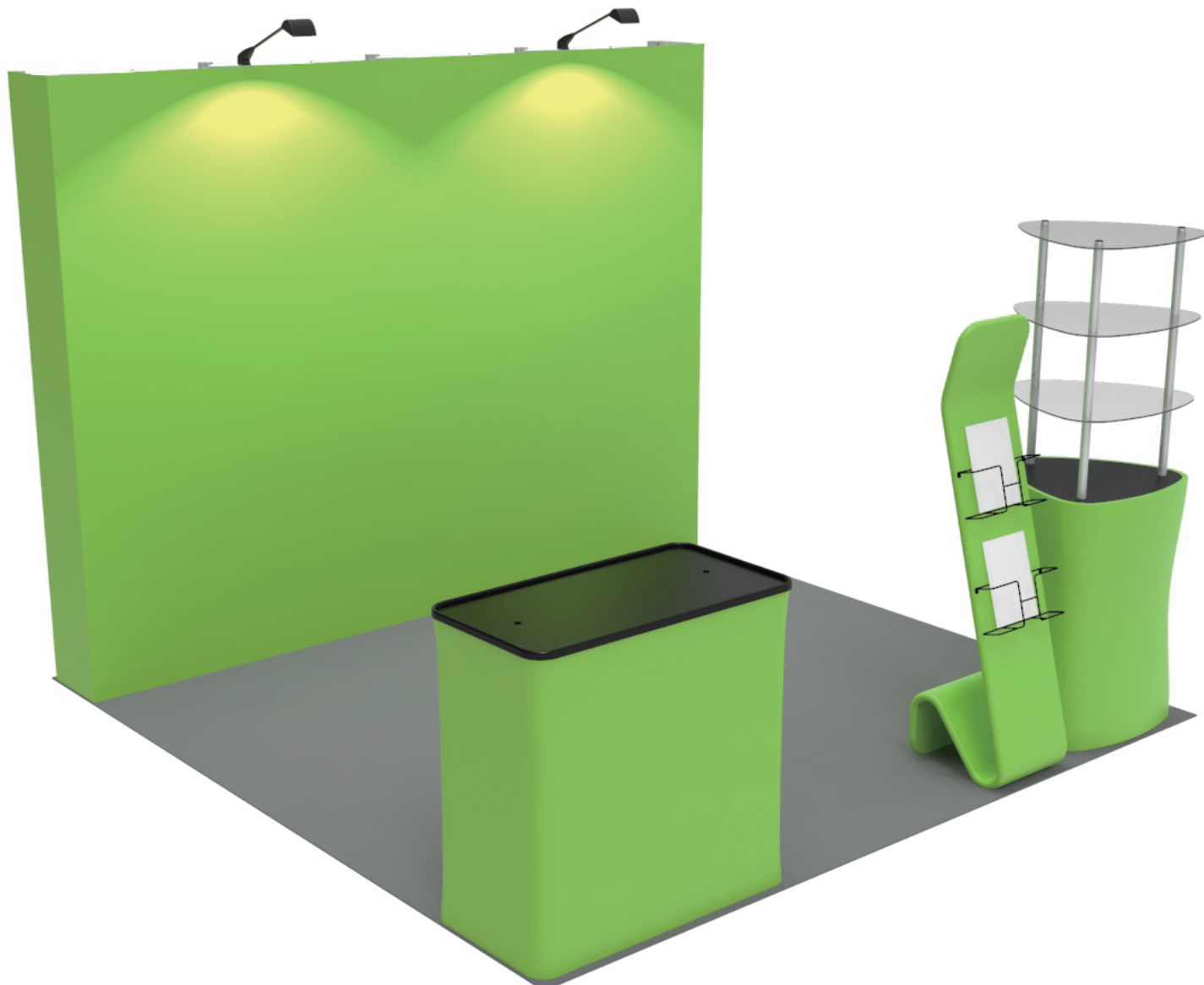


INSTRUCTION



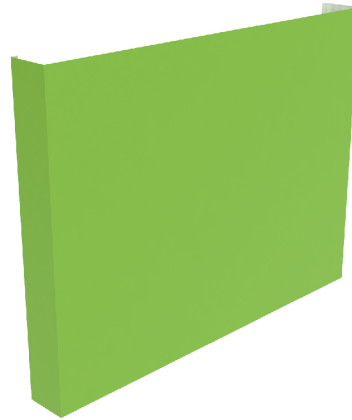
TF-SB-10X10-31

STEPS

(1) Hardware



(2) Fabric banner

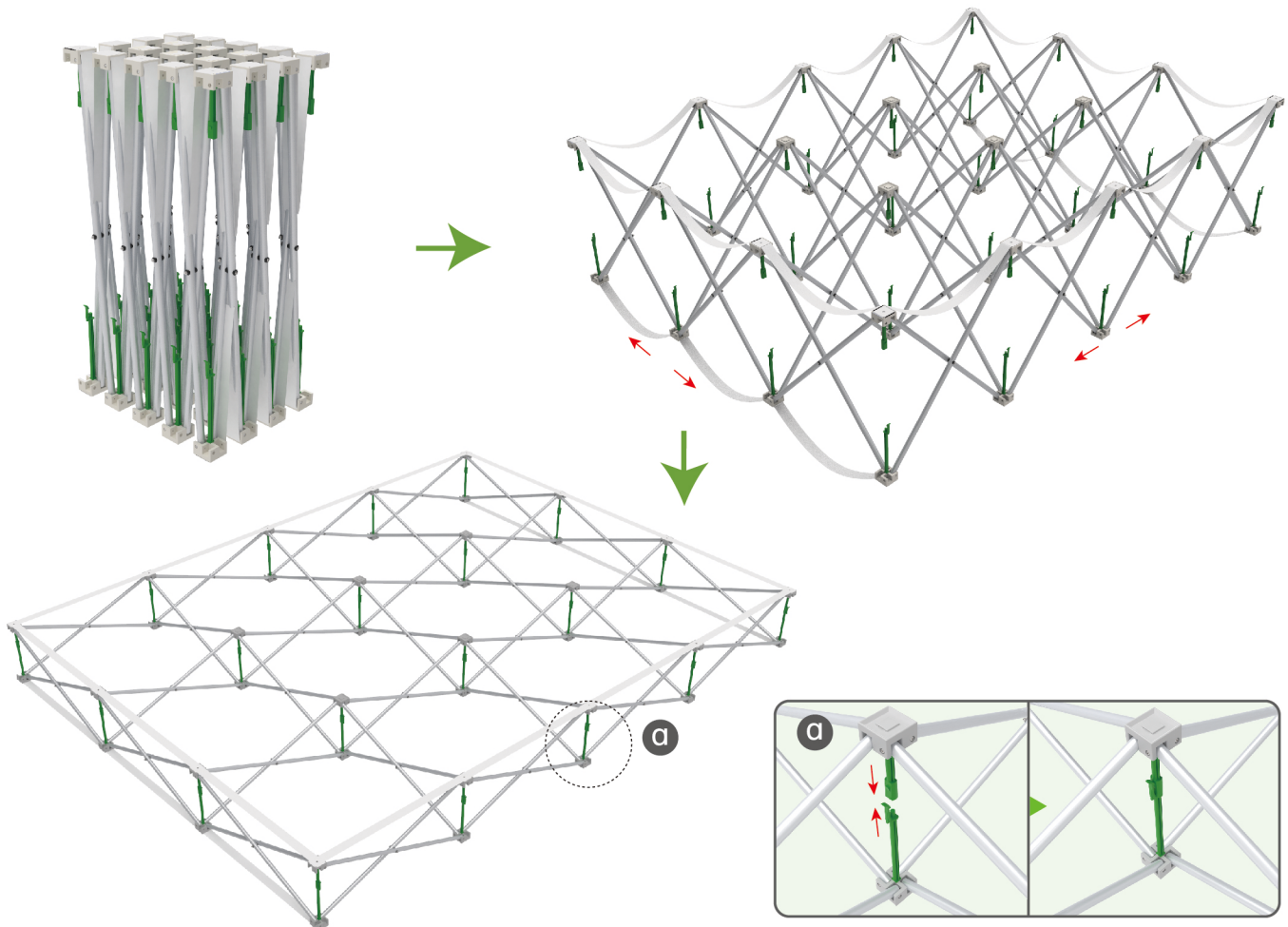


STEP 01

Expand the frame from diagonal to shape. To align the green locking pieces up & down and clip together.

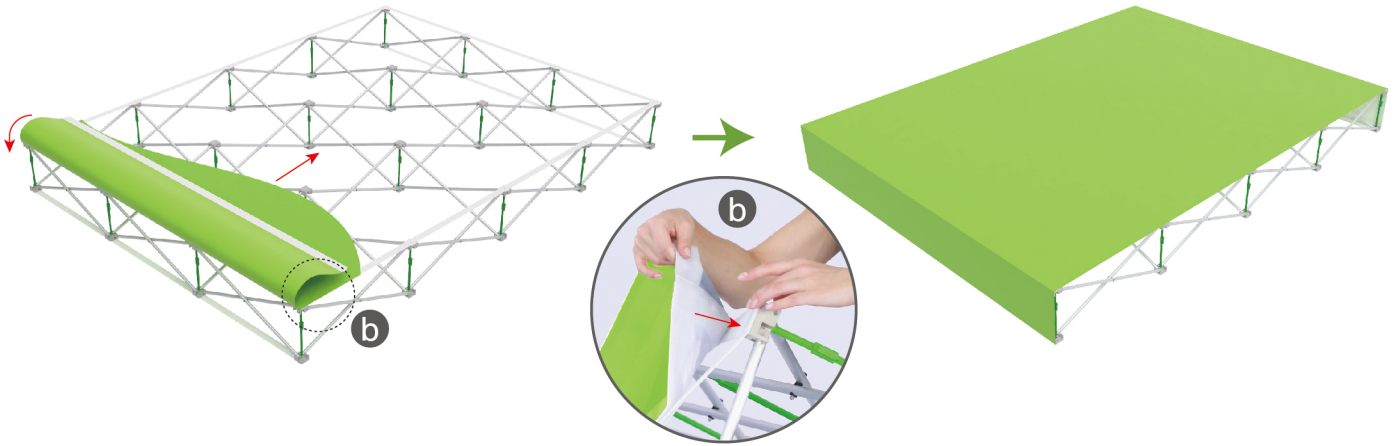
PLEASE NOTE

Make sure to loosen all green locking pieces before folding up pop up frame.



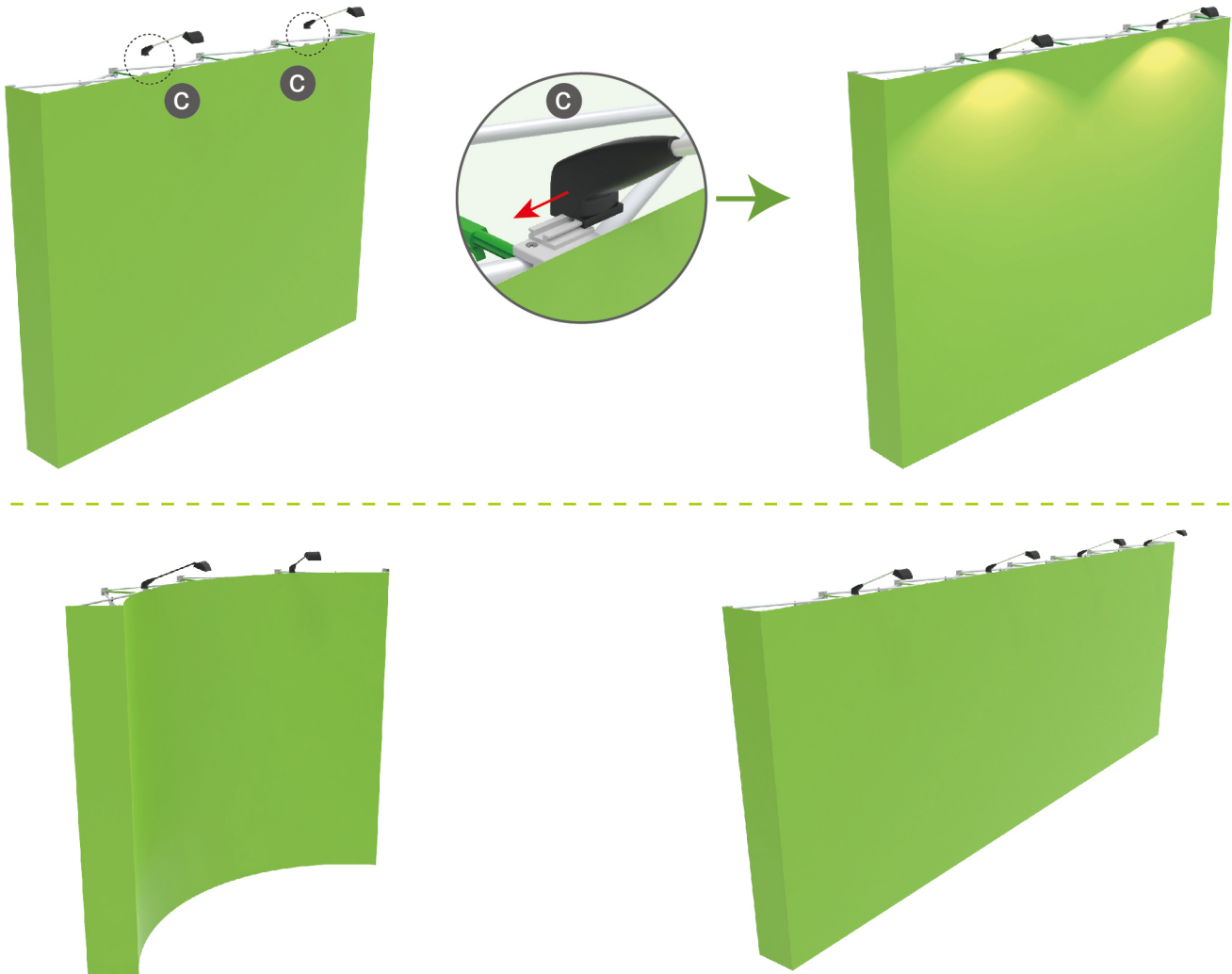
STEPS

STEP 02 To attach the fabric banner from side to side and then attach the end caps.



STEP 03 To slide the LED light at top of frame in position (2 of the plastic pieces at top are with slots for the lights)

LED Lights are optional



STEPS

(1) Durable Plastic Hard Case, Aluminum Support Poles

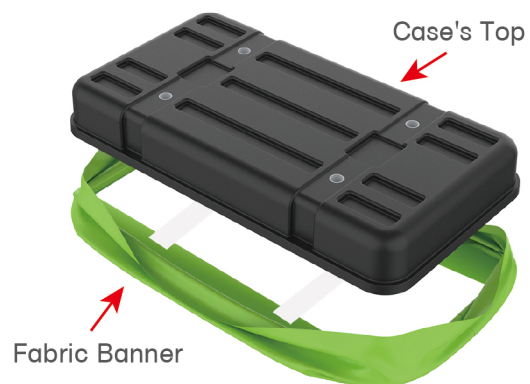


(2) Printed Graphic Fabric Banner



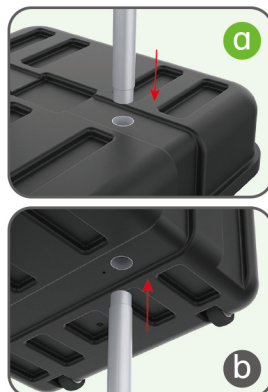
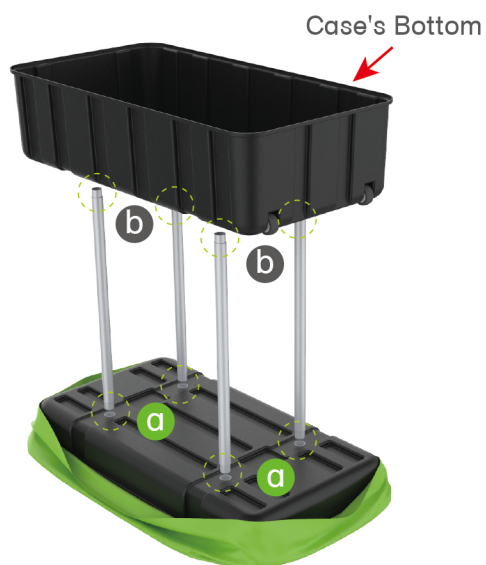
STEP 01

Put hard case's top into fabric banner.



STEP 02

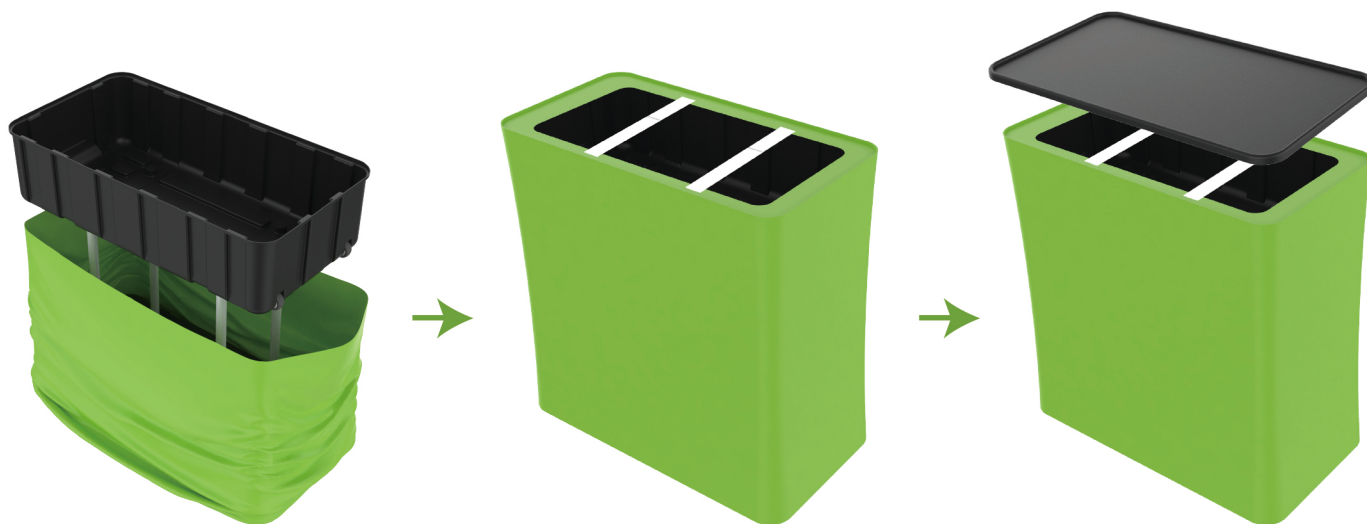
Insert support poles into hard case's top & bottom.



STEPS

STEP 04

Wrap fabric banner from bottom to top & twist it to be smooth, lay hard case's intermediate panel on podium's top.



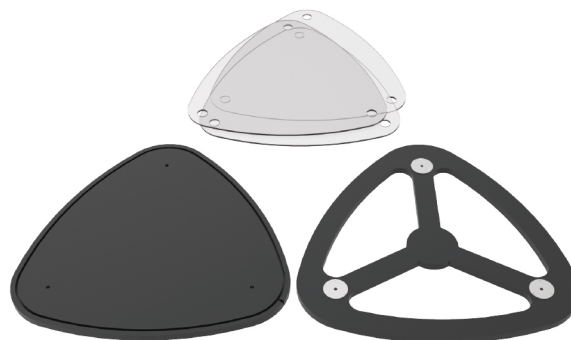
★ One Tool (Hex Wrench) 

STEPS

(1) Straight Support Poles



(2) Top MDF Board, Bottom MDF Board, Acrylic Boards

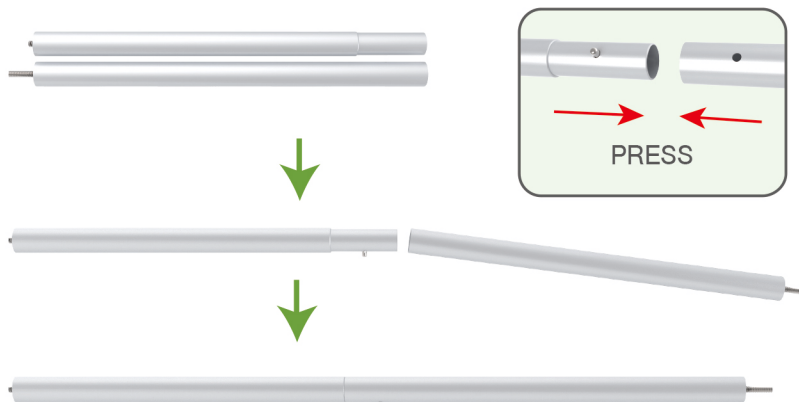


(3) Printed Graphic Fabric Banner



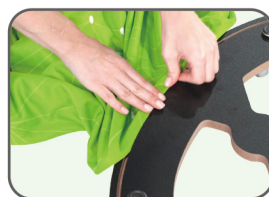
STEP 01

Connect straight support poles by pressing knobs to lock.



STEP 02

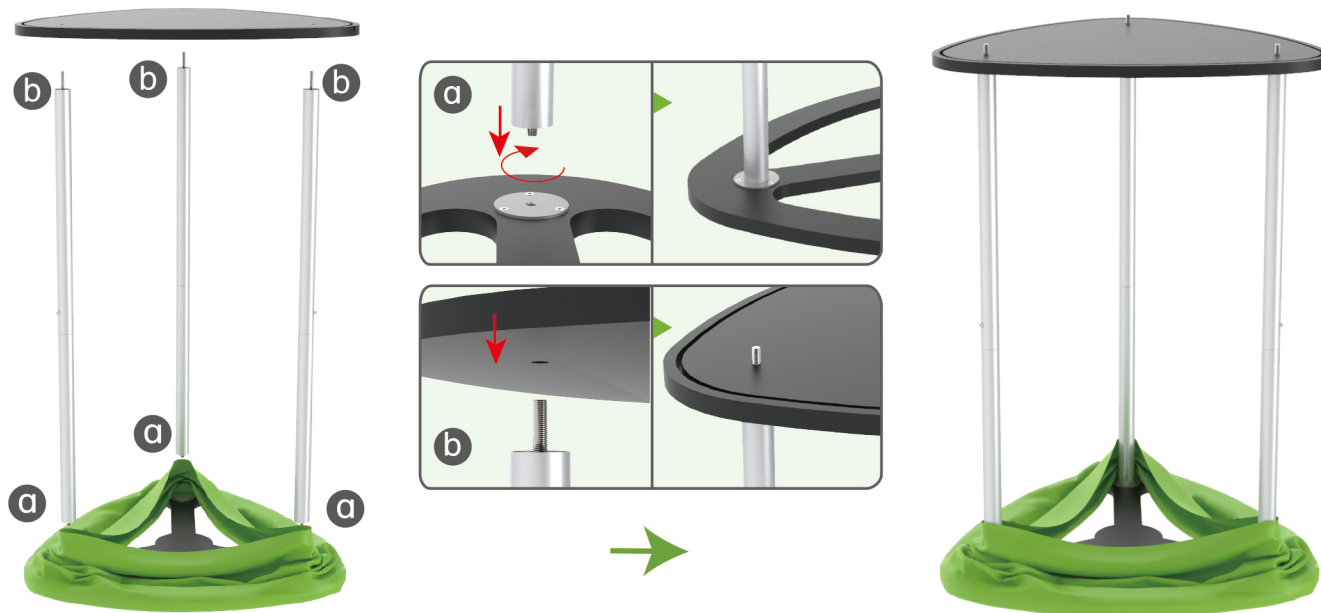
Insert fabric banner into bottom MDF board's slot and turn it over.



STEPS

STEP 03

Screw straight support poles in bottom MDF board's threaded holes and place top MDF board on them.



STEP 04

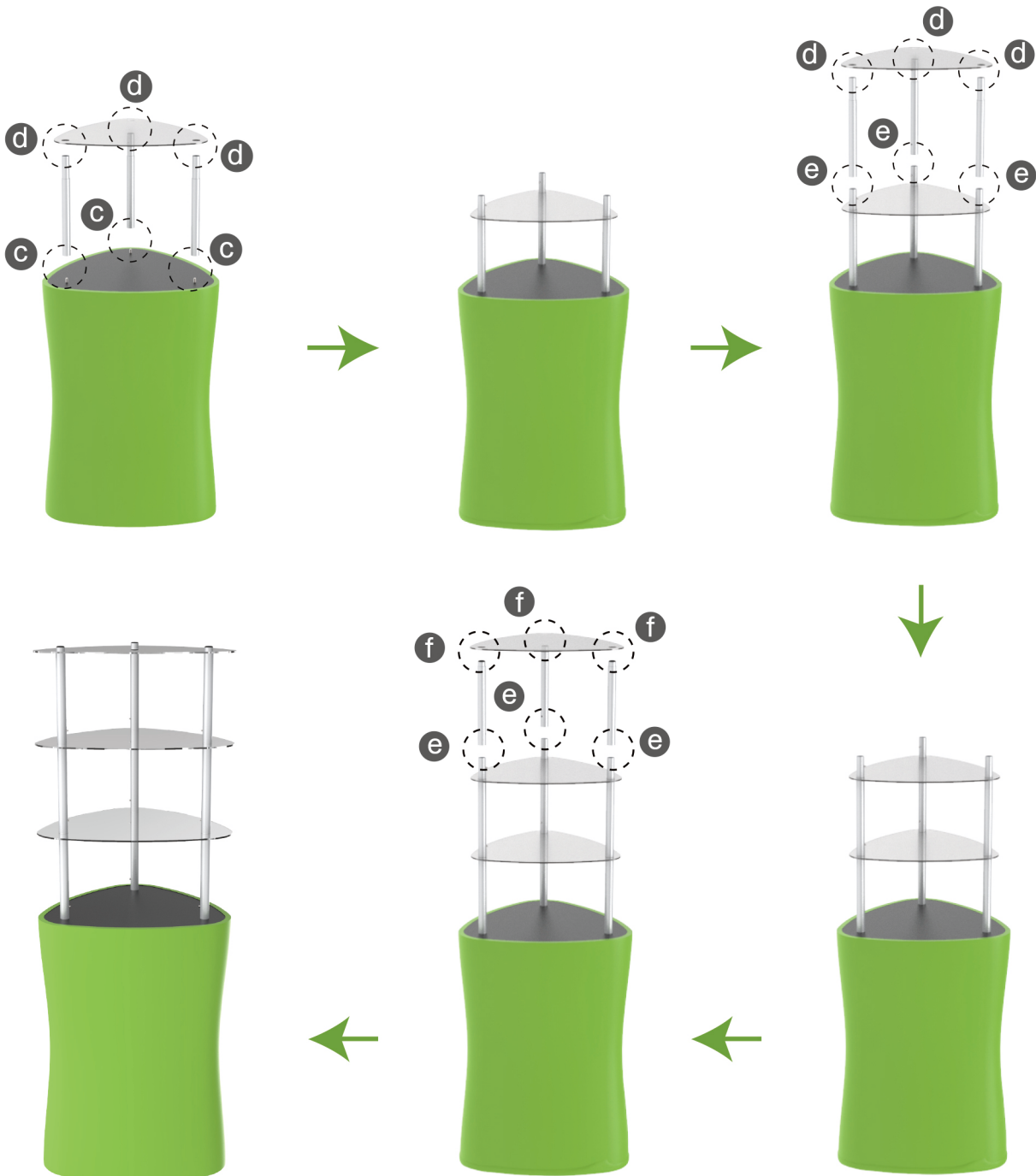
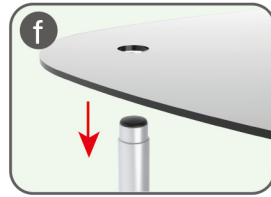
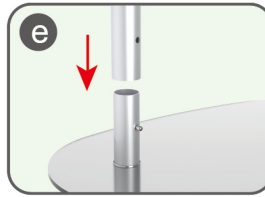
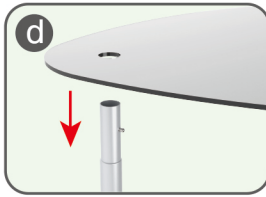
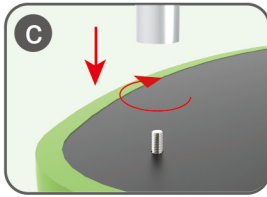
Pull fabric banner from bottom to top and insert into top MDF board's slot.



STEPS

STEP 05

Screw straight support poles with threaded holes filled onto nuts and place acrylic boards on them layer by layer.



STEPS



DT-S-02



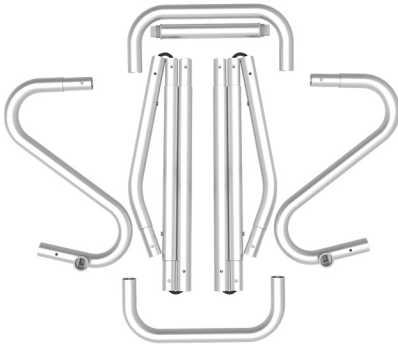
DT-S-01



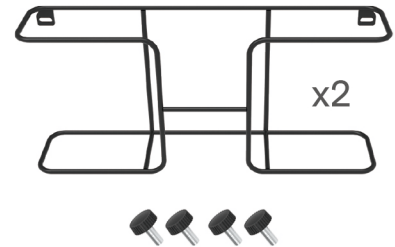
DT-S-03

STEPS

(1) Snap Tubes

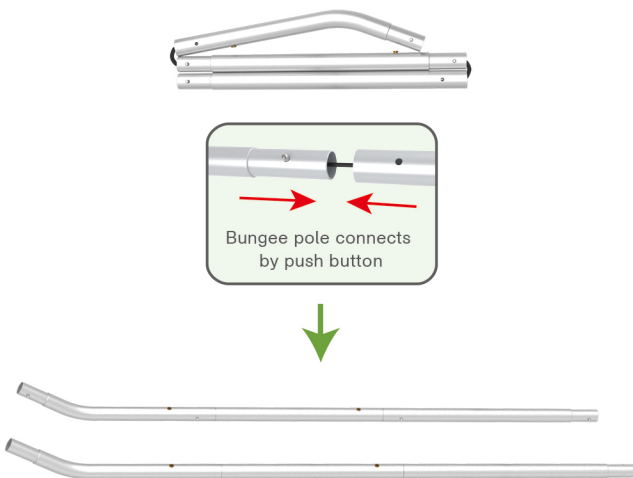


(2) Printed fabric banner

(3) Brochure rack x 2
Screws x 4

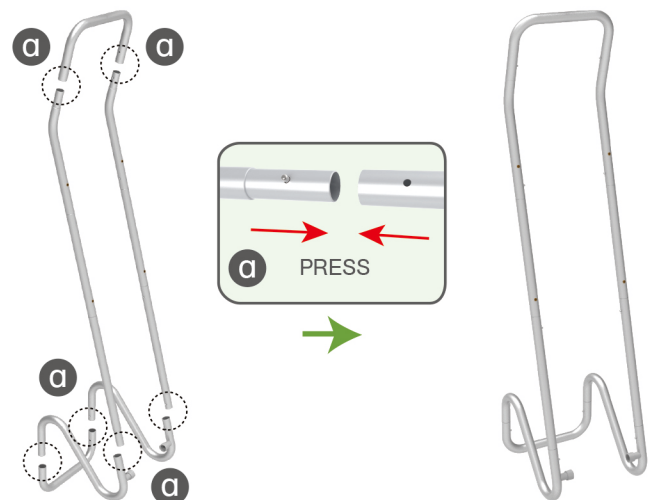
STEP 01

To Connect the tubes according to the labellings

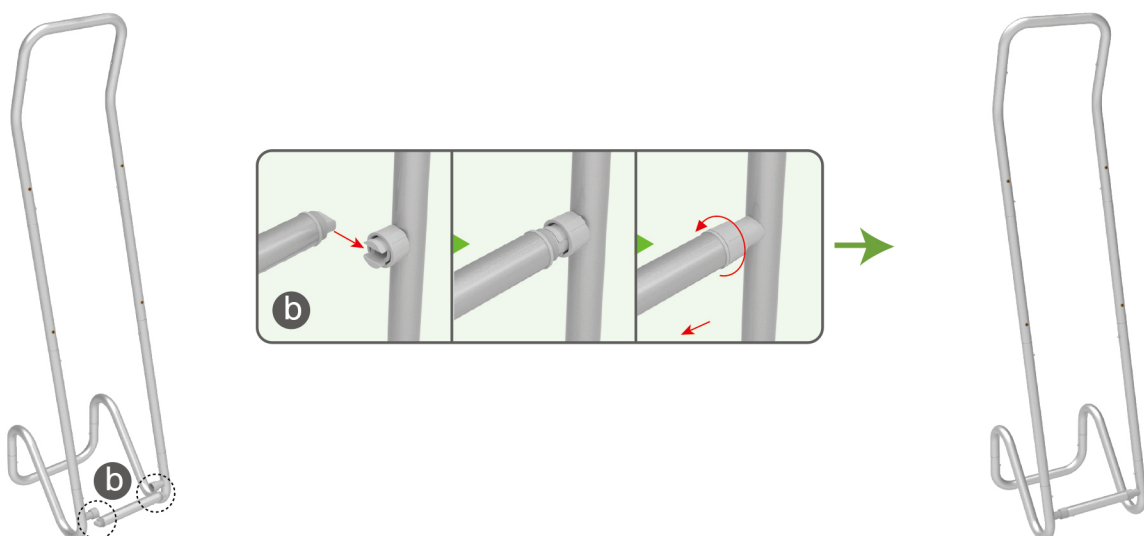


STEP 02

To connect 2 long side tubes by the corner pieces



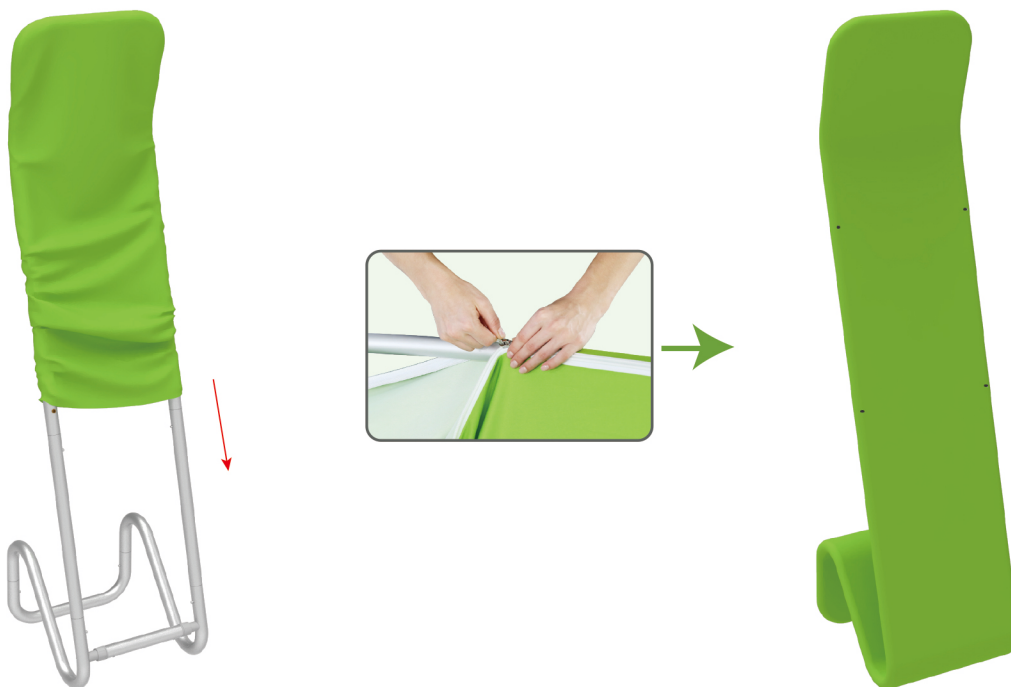
STEP 03 To install the cross bar according to labellings



STEPS

STEP 04

To Wrap up the fabric banner from top to bottom and zip up.



STEP 05

To install 2 racks by screws in position

