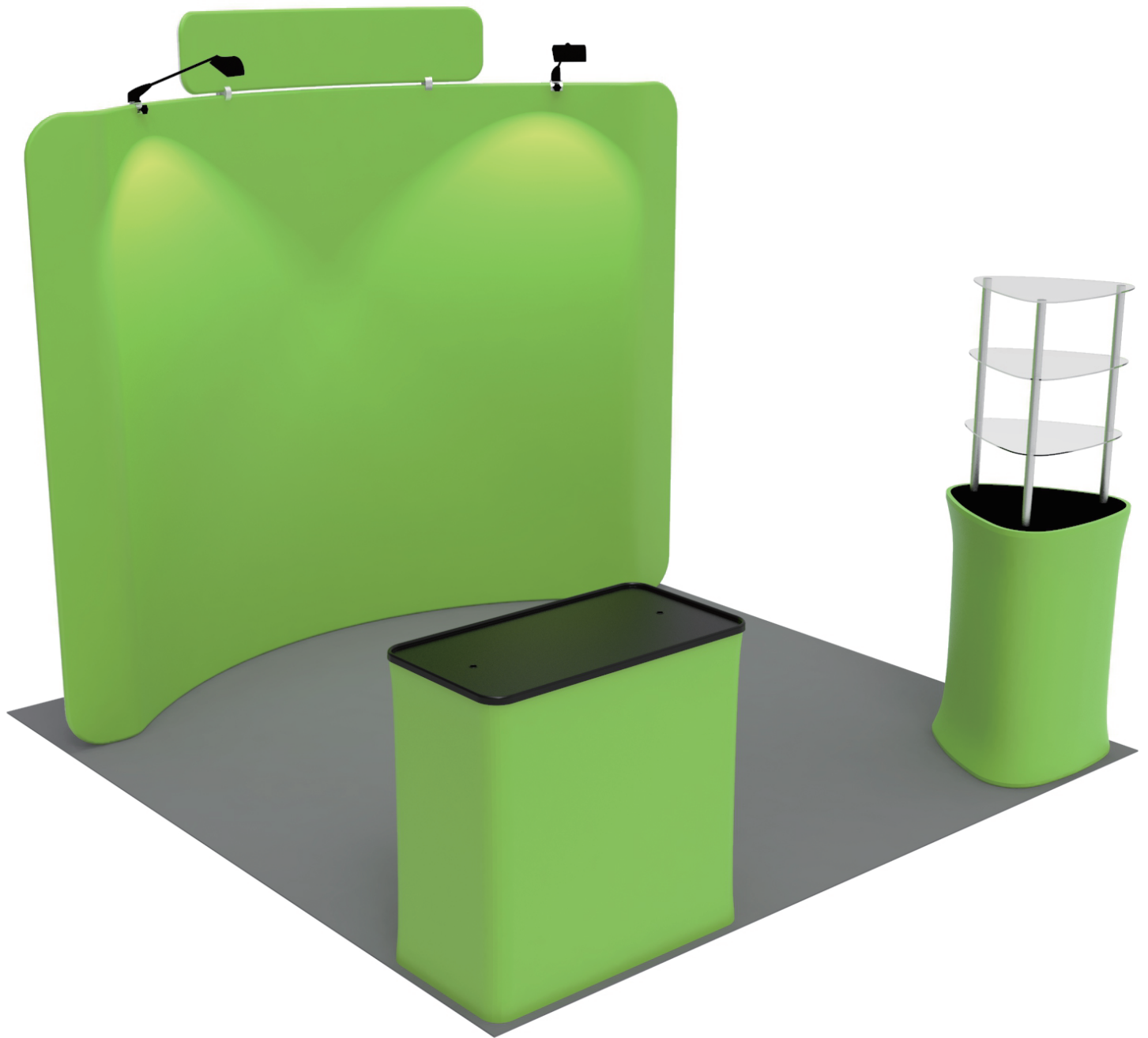


INSTRUCTION



TF-SB-10X10-22

STEPS

(1) Hardware

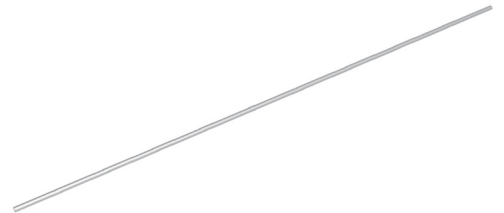
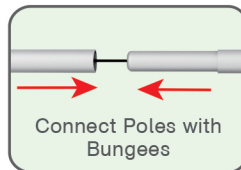
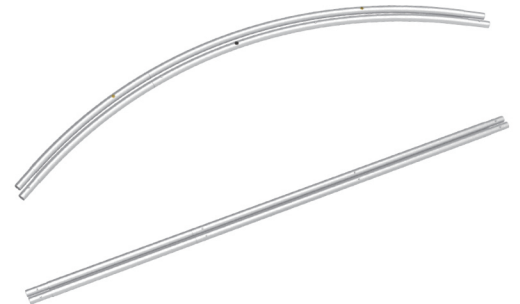
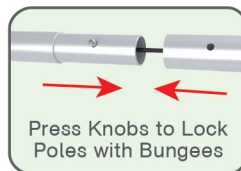
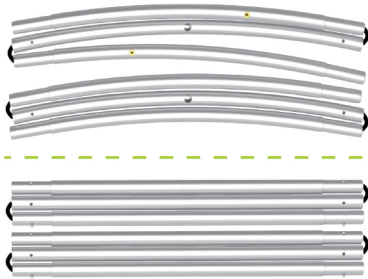


(2) Printed Graphic Fabric Banner (Optional)



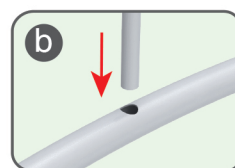
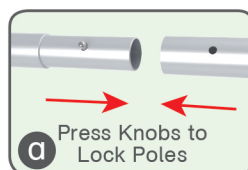
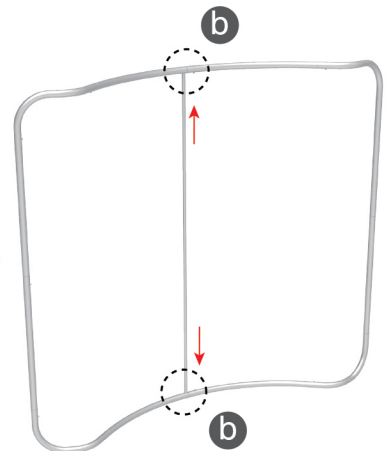
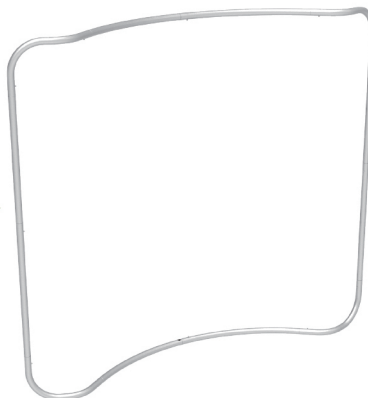
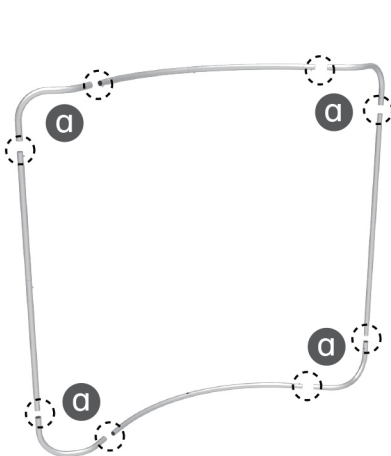
STEP 01

Connect to make long poles according to labelings.



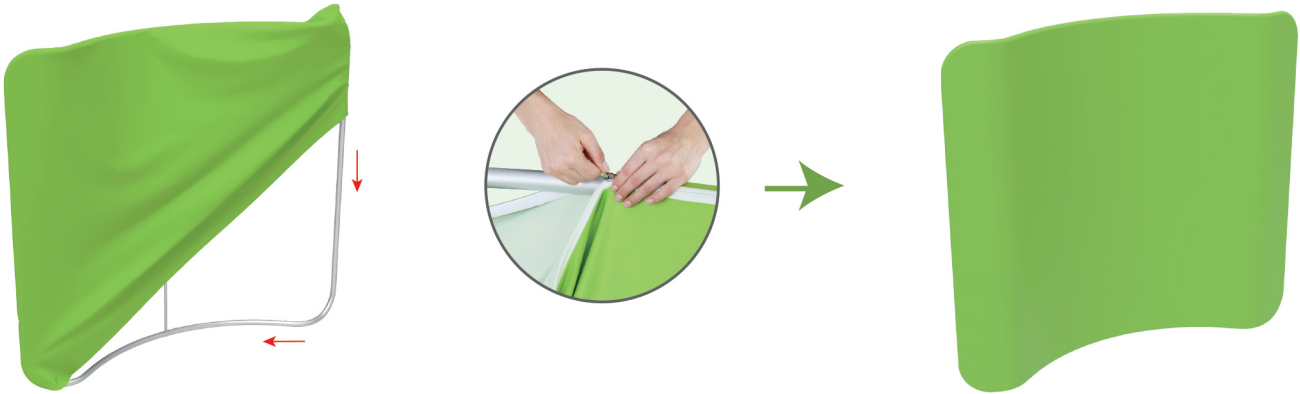
STEP 02

Connect long poles with corner poles according to labelings.

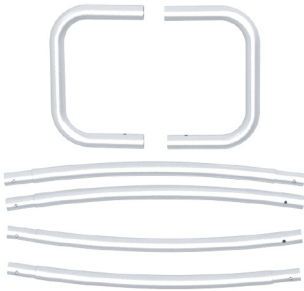


STEPS

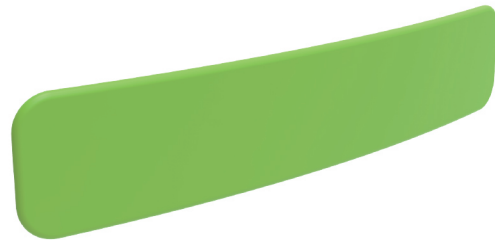
STEP 03 Slide fabric banner on frame from top and zip up at bottom.



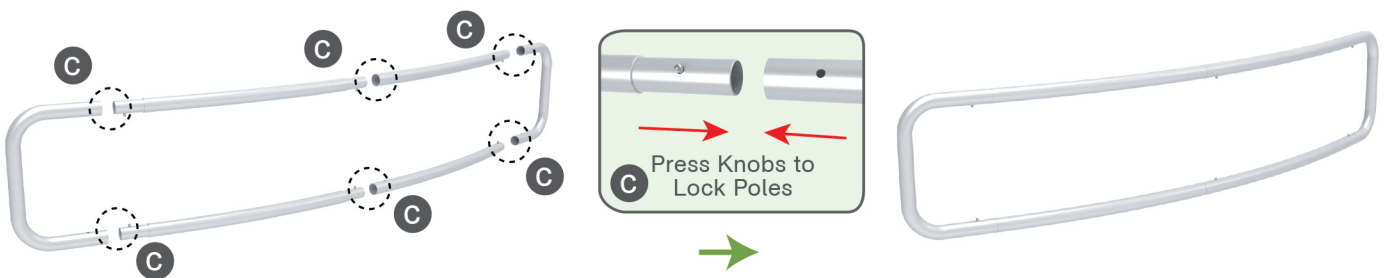
(1) Hardware



(2) Printed Graphic Fabric Banner (Optional)



STEP 01 Connect poles according to labelings.



STEP 02 Slide fabric banner on frame from left and zip up at right.



★ One Tool (Hex Wrench) 

STEPS

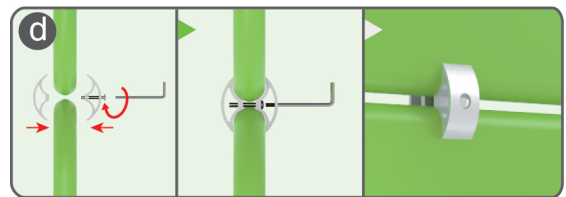
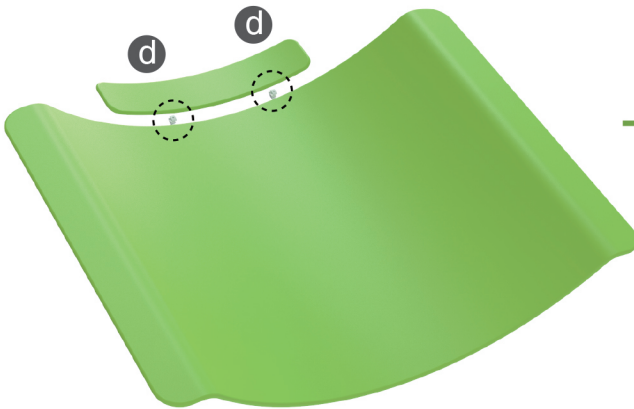
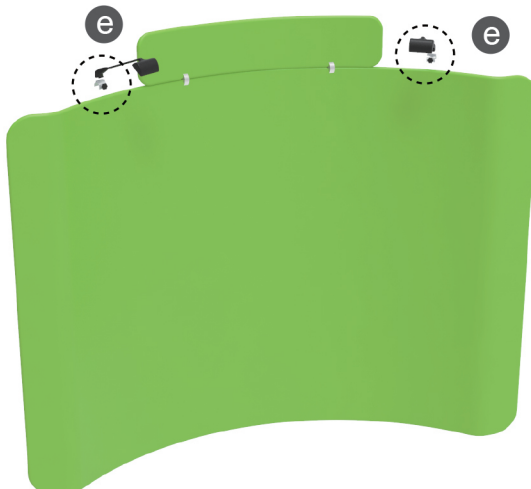
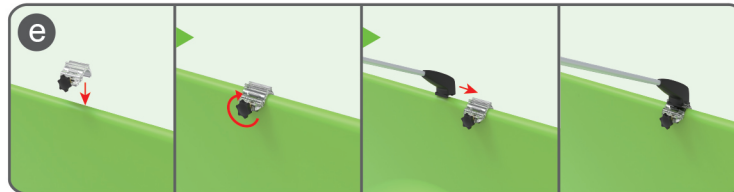
Booth Set Assembly



(1) LED Light & Clip



(2) 180° C-Shaped Clip

**STEP 01** Interconnect display stands with C-shaped clips.**STEP 05** Screw light clips at top of display stands, slide lights onto them and adjust their direction.

STEPS

(1) Durable Plastic Hard Case, Aluminum Support Poles

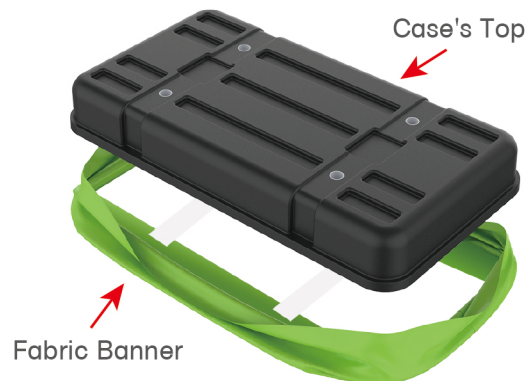


(2) Printed Graphic Fabric Banner



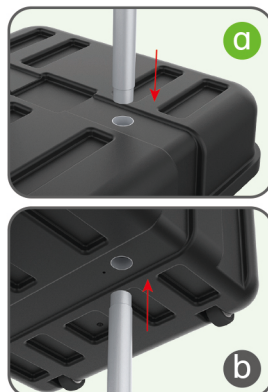
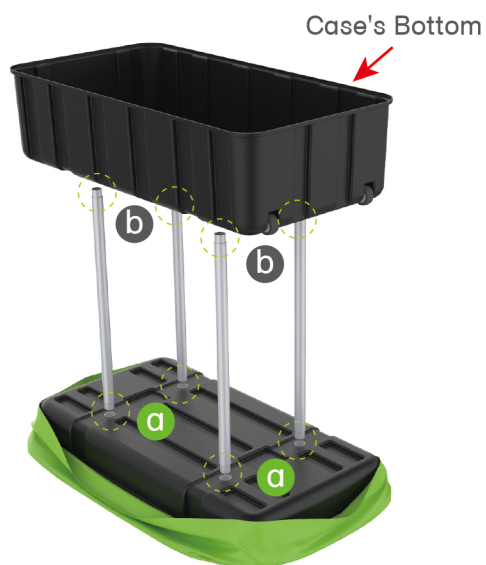
STEP 01

Put hard case's top into fabric banner.



STEP 02

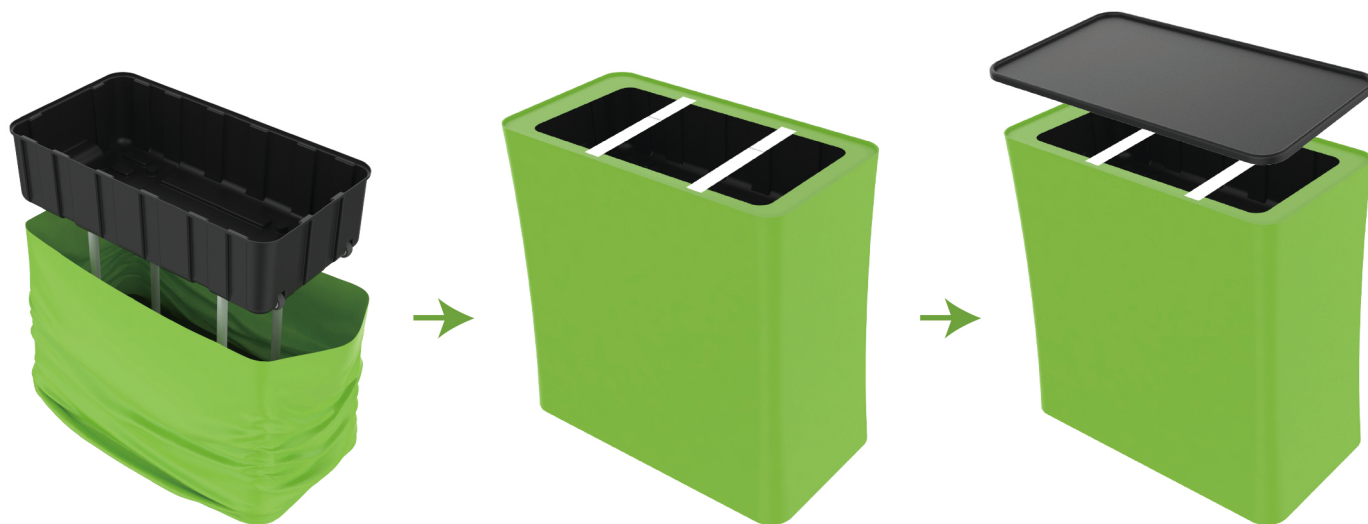
Insert support poles into hard case's top & bottom.



STEPS

STEP 04

Wrap fabric banner from bottom to top & twist it to be smooth, lay hard case's intermediate panel on podium's top.



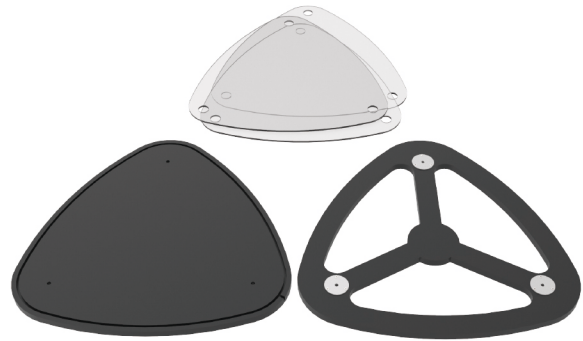
★ One Tool (Hex Wrench)

STEPS

(1) Straight Support Poles



(2) Top MDF Board, Bottom MDF Board, Acrylic Boards

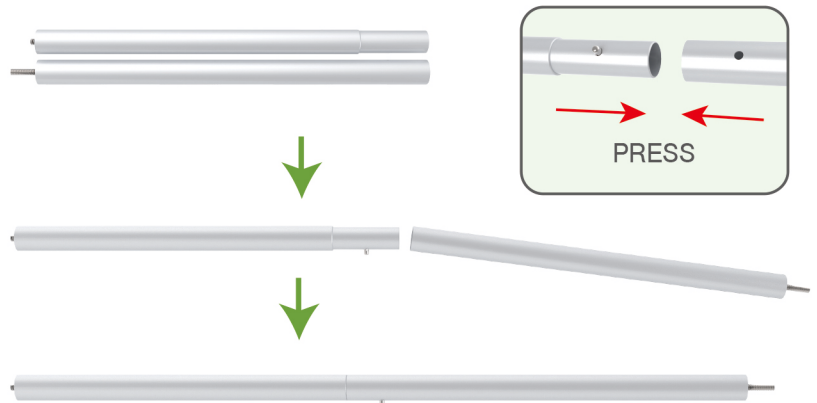


(3) Printed Graphic Fabric Banner



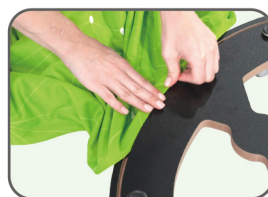
STEP 01

Connect straight support poles by pressing knobs to lock.



STEP 02

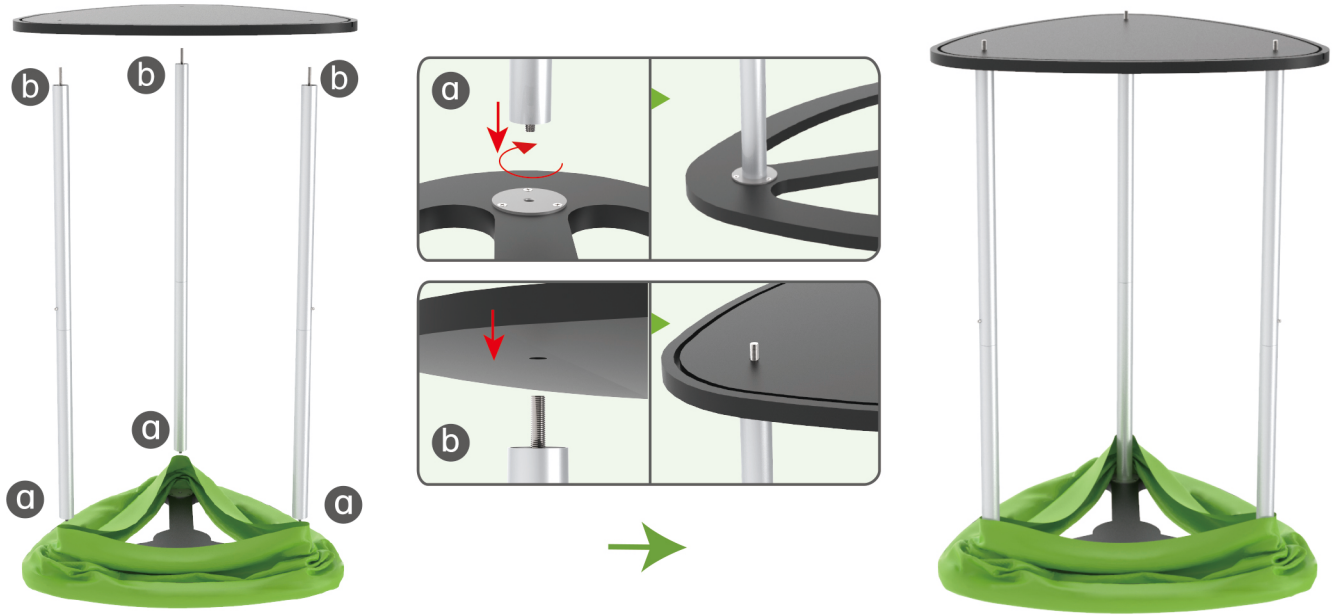
Insert fabric banner into bottom MDF board's slot and turn it over.



STEPS

STEP 03

Screw straight support poles in bottom MDF board's threaded holes and place top MDF board on them.



STEP 04

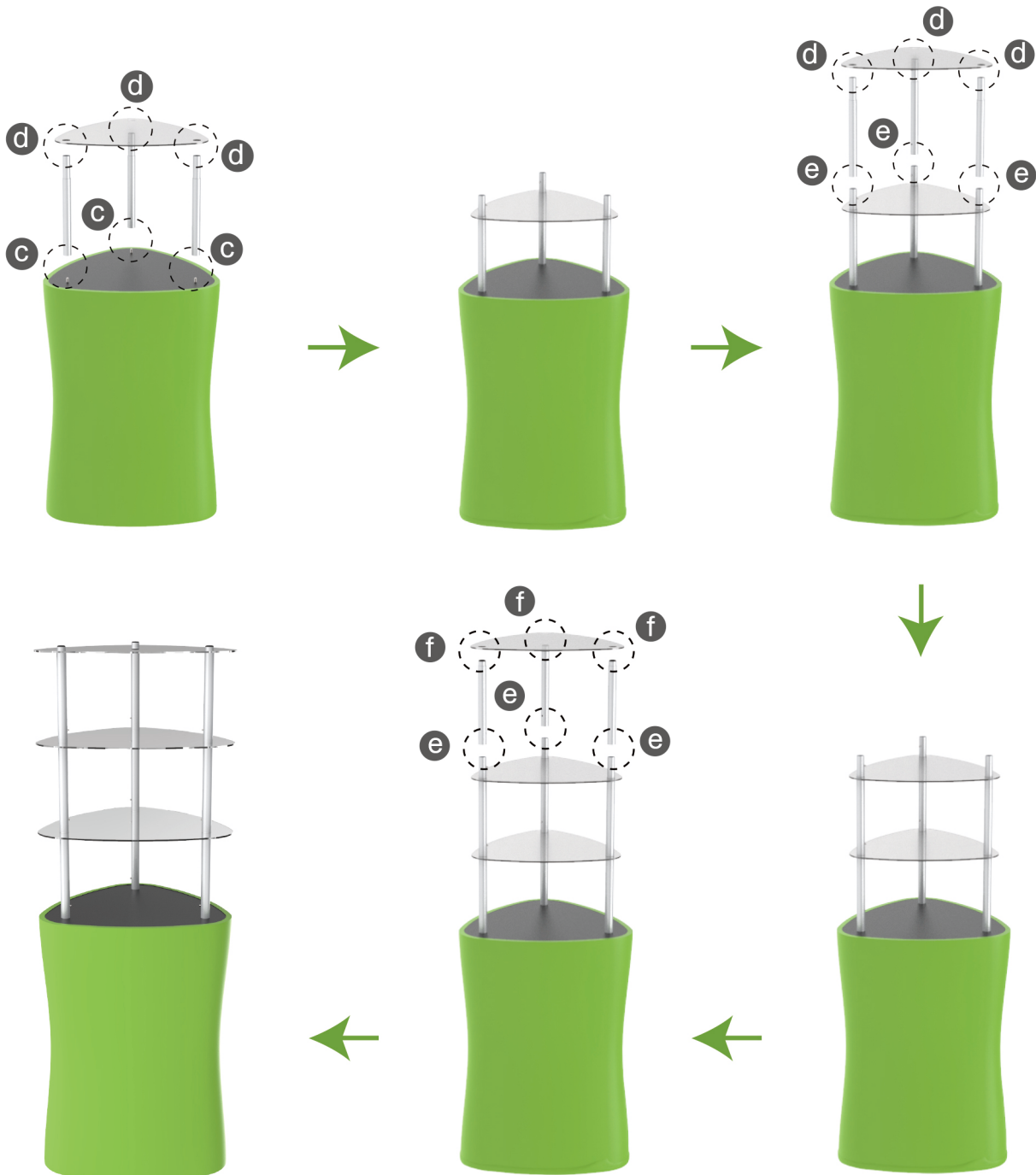
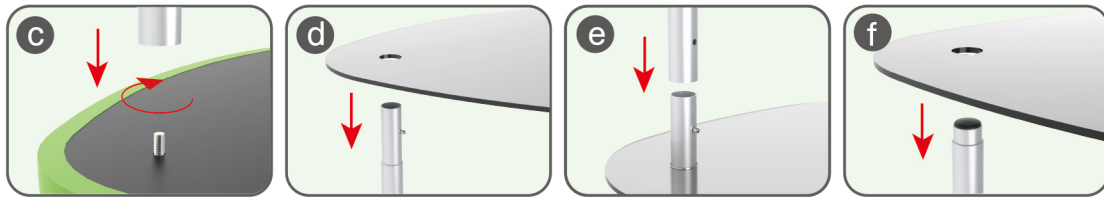
Pull fabric banner from bottom to top and insert into top MDF board's slot.



STEPS

STEP 05

Screw straight support poles with threaded holes filled onto nuts and place acrylic boards on them layer by layer.



STEPS



DT-S-02



DT-S-01



DT-S-03