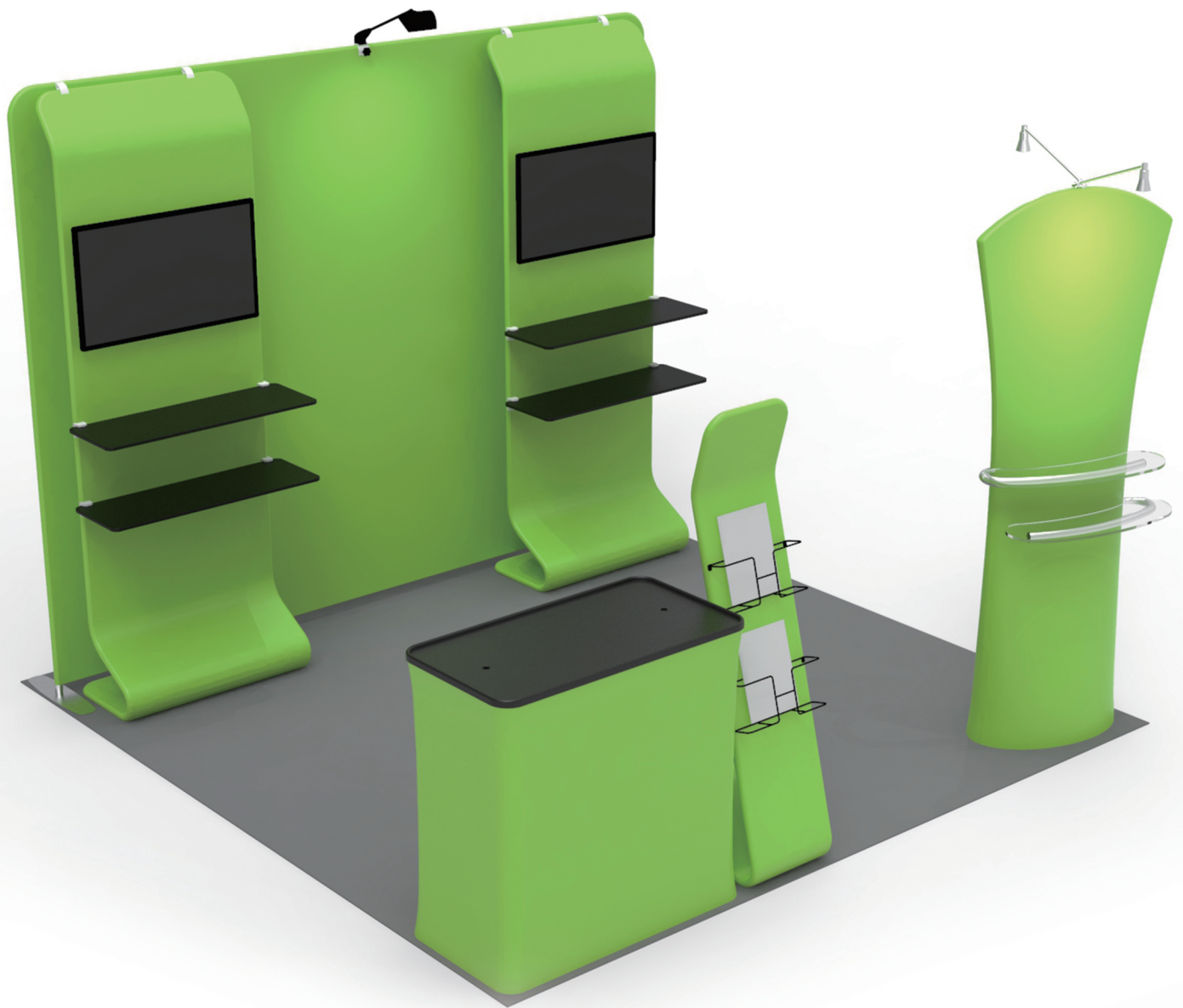


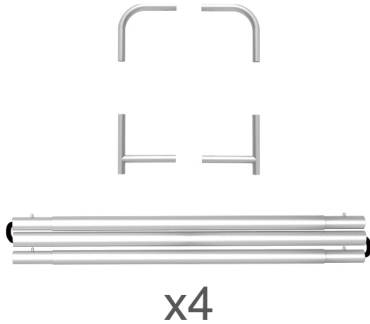
# INSTRUCTION



**10X10FT-BOOTH-W**

## STEPS

(1) Hardware

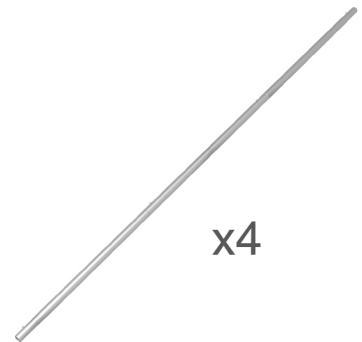
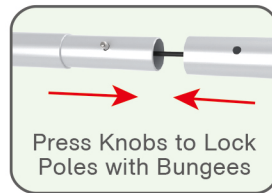
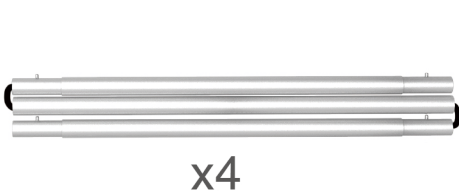


(2) Printed Graphic Fabric Banner (Optional)



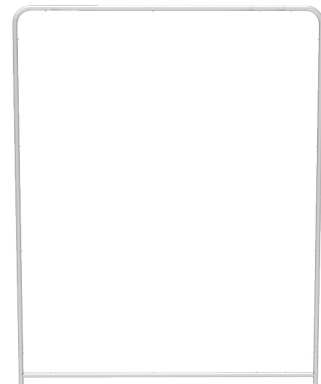
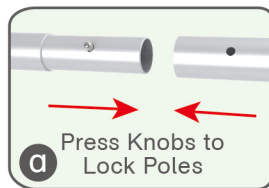
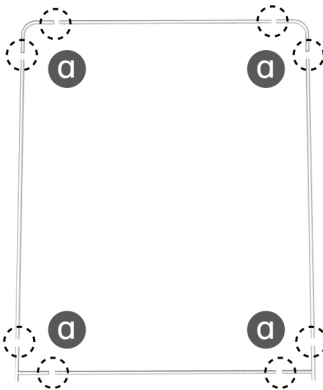
## STEP 01

Connect to make long poles according to labelings.



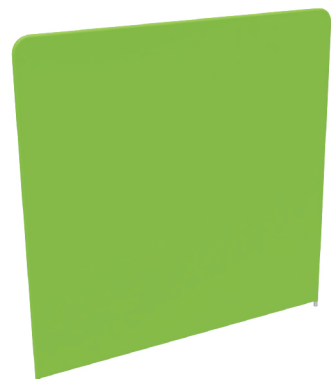
## STEP 02

Connect long poles with corner poles according to labelings.



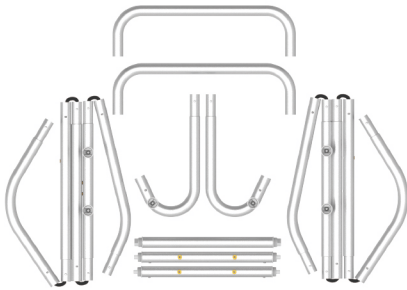
## STEP 03

Slide fabric banner on frame from top and zip up at bottom.



## STEPS

(1) Hardware

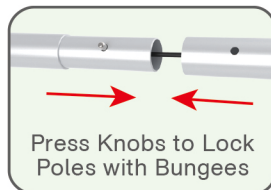


(2) Printed Graphic Fabric Banner (Optional)



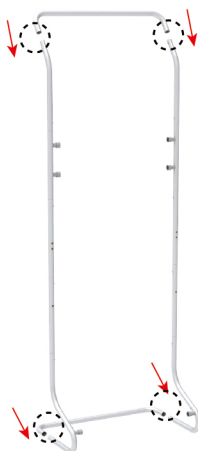
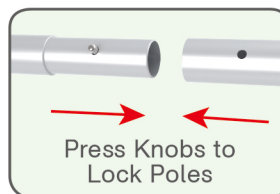
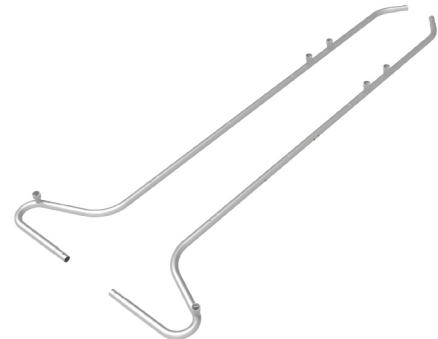
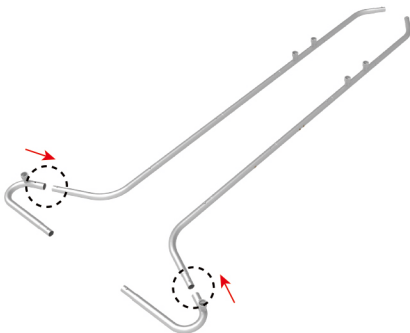
## STEP 01

Connect to make long poles according to labelings.



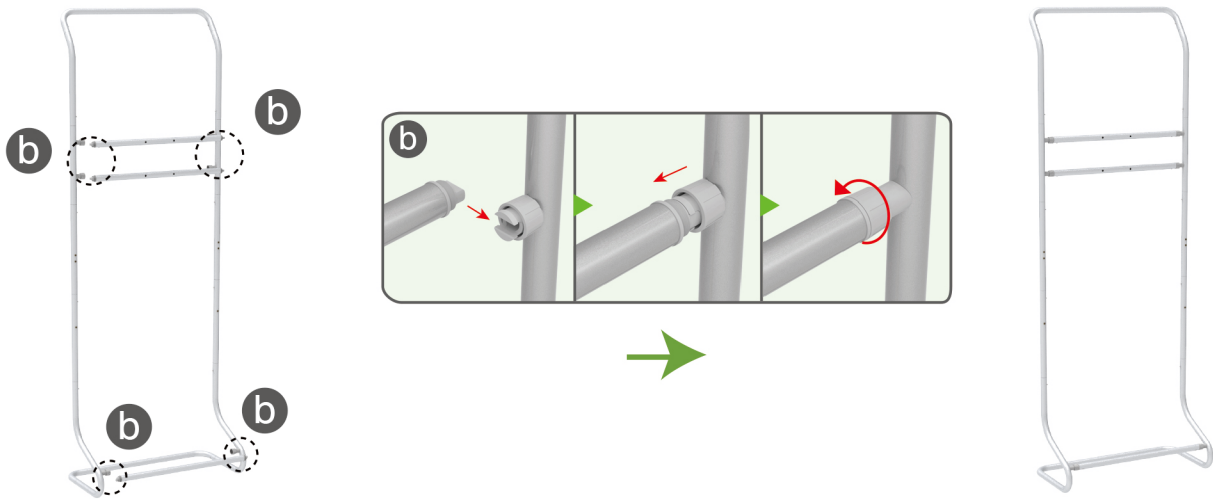
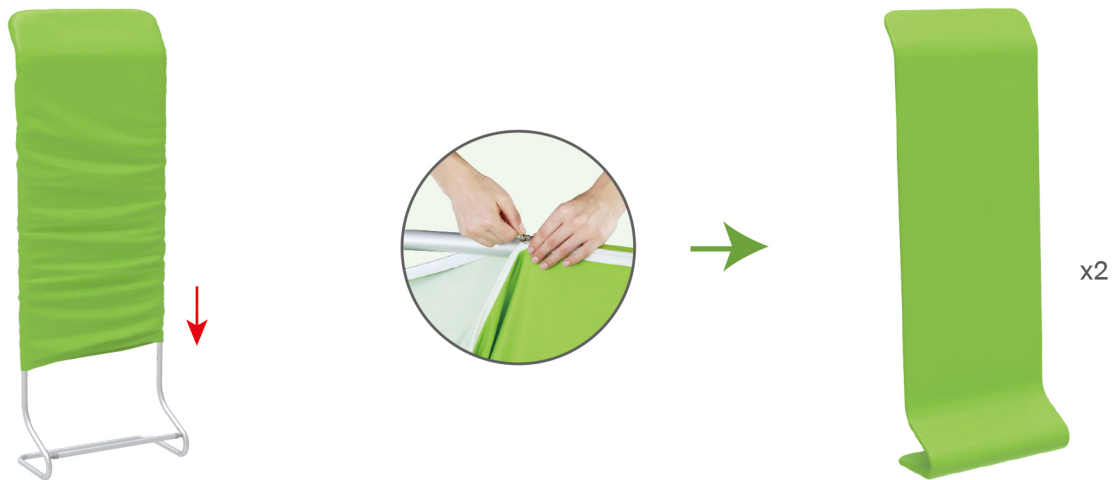
## STEP 02

Connect long poles with corner poles according to labelings.

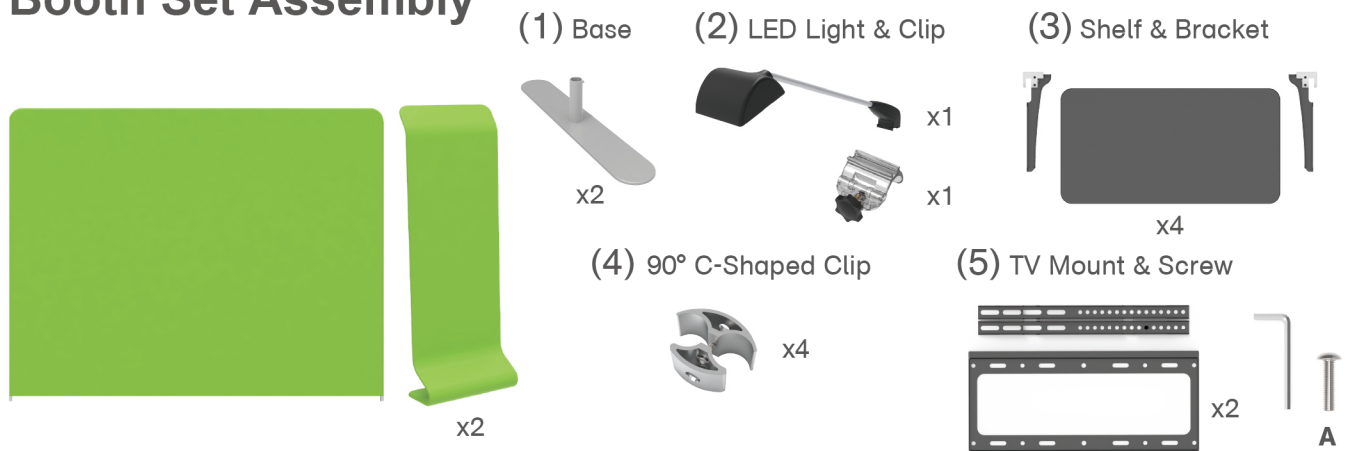


★ One Tool (Hex Wrench)

## STEPS

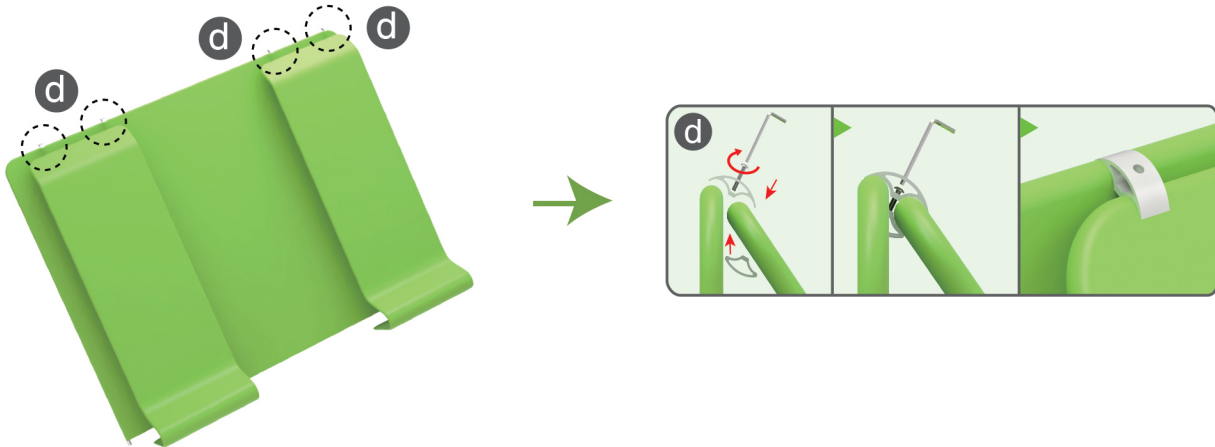
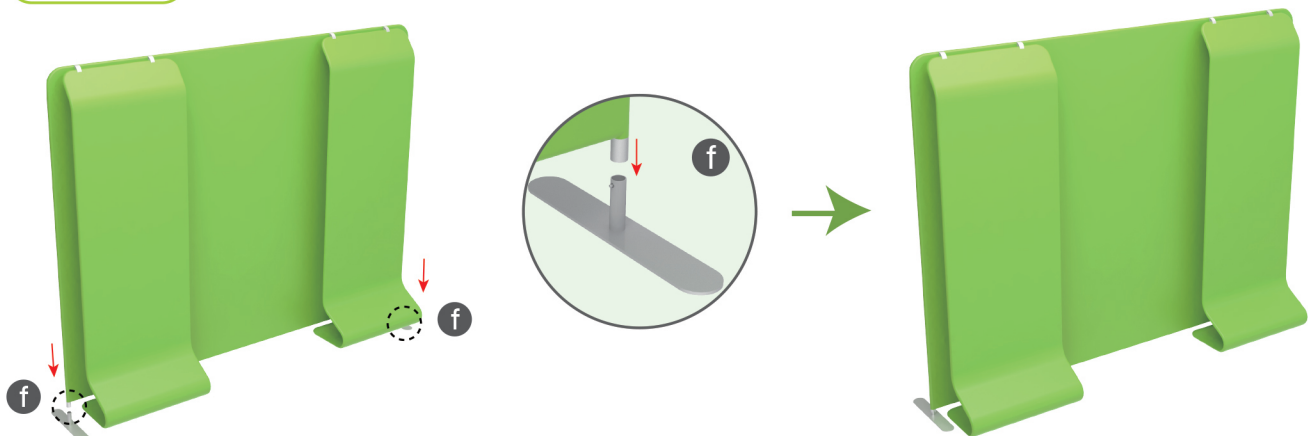
**STEP 03** Install cross bars in position.**STEP 04** Slide fabric banner on frame from top and zip up at bottom.

## Booth Set Assembly

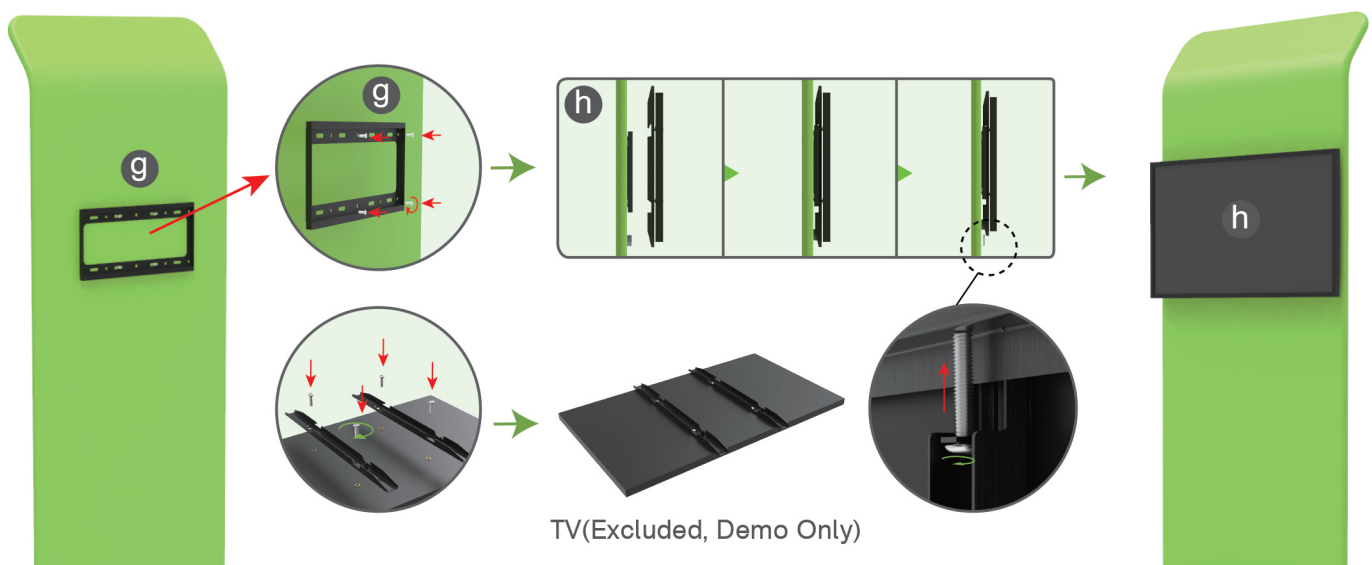




## STEPS

**STEP 01** Interconnect display stands with C-shaped clips.**STEP 02** Insert display stands onto feet by pressing their knobs.**STEP 03**

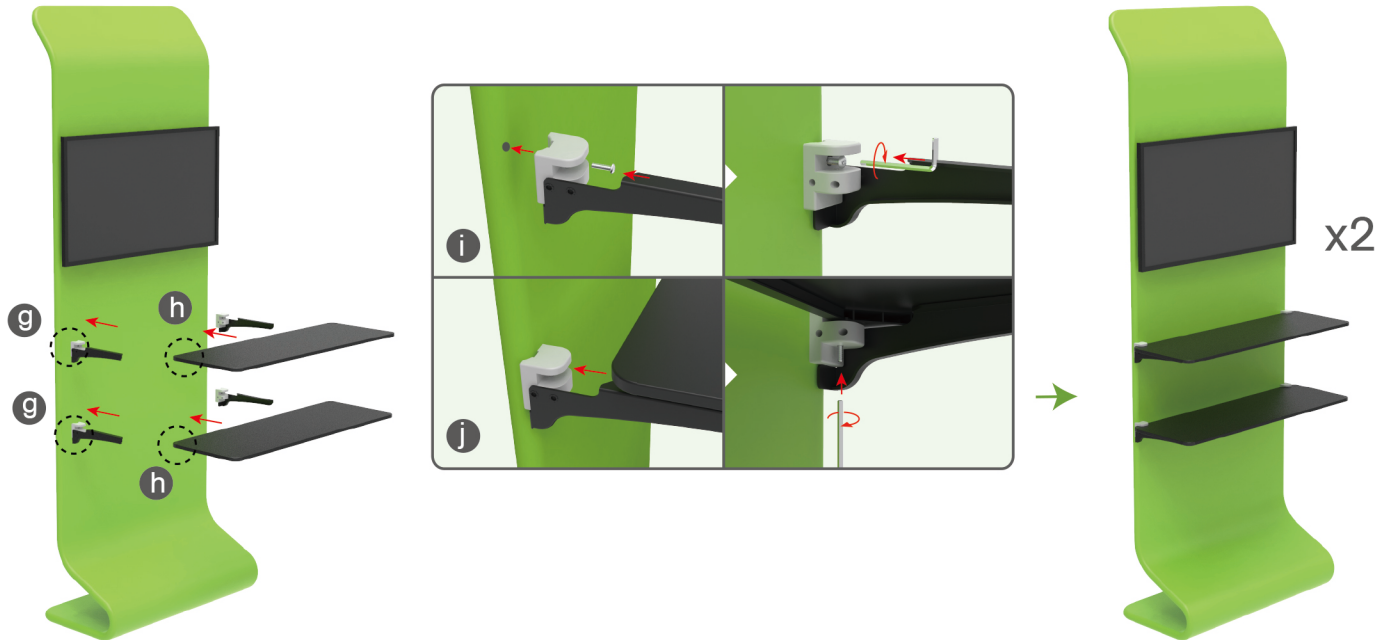
Screw TV mount onto display stand &amp; support brackets onto TV's back with hex wrench, hang TV onto mount &amp; screw.



## STEPS

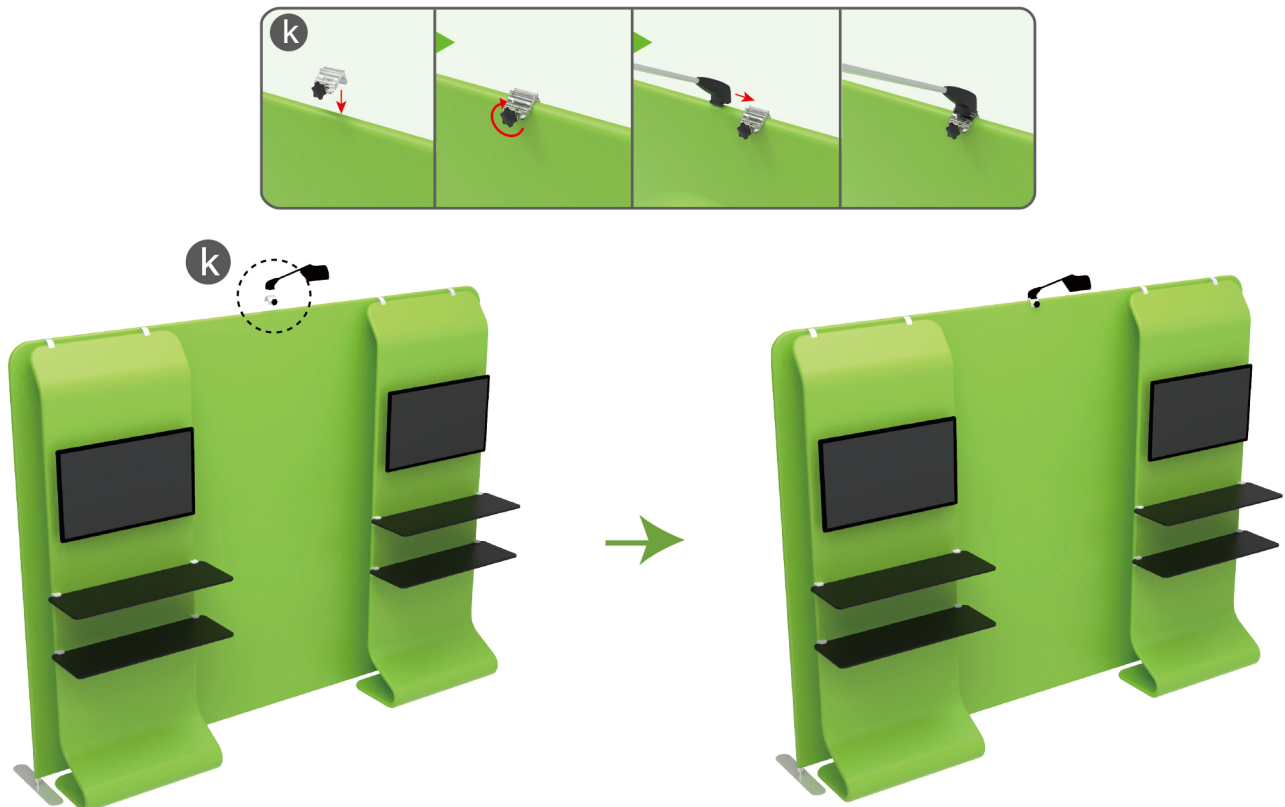
## STEP 04

Screw brackets onto display stand with hex wrench, insert shelves into slots.



## STEP 05

Screw light clips at top of display stands, slide lights onto them and adjust their direction.



**STEPS****10X10FT-BOOTH-W**

## STEPS

(1) Durable Plastic Hard Case, Aluminum Support Poles

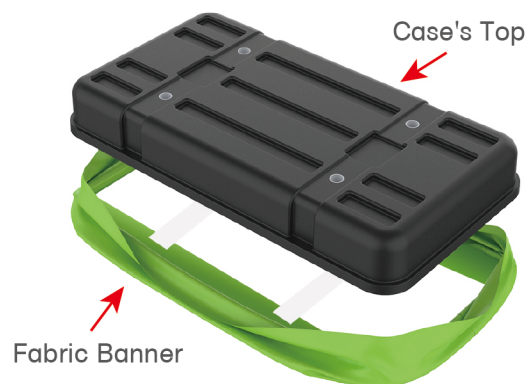


(2) Printed Graphic Fabric Banner



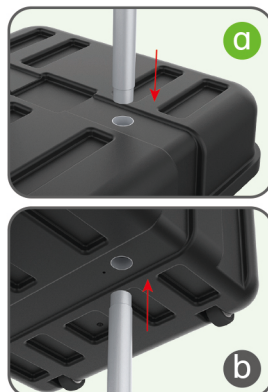
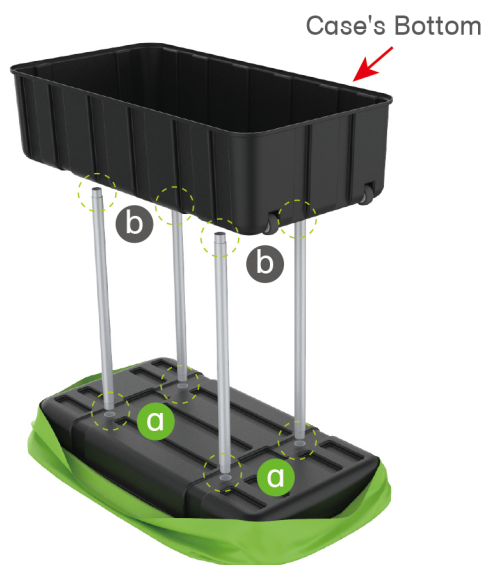
## STEP 01

Put hard case's top into fabric banner.



## STEP 02

Insert support poles into hard case's top &amp; bottom.

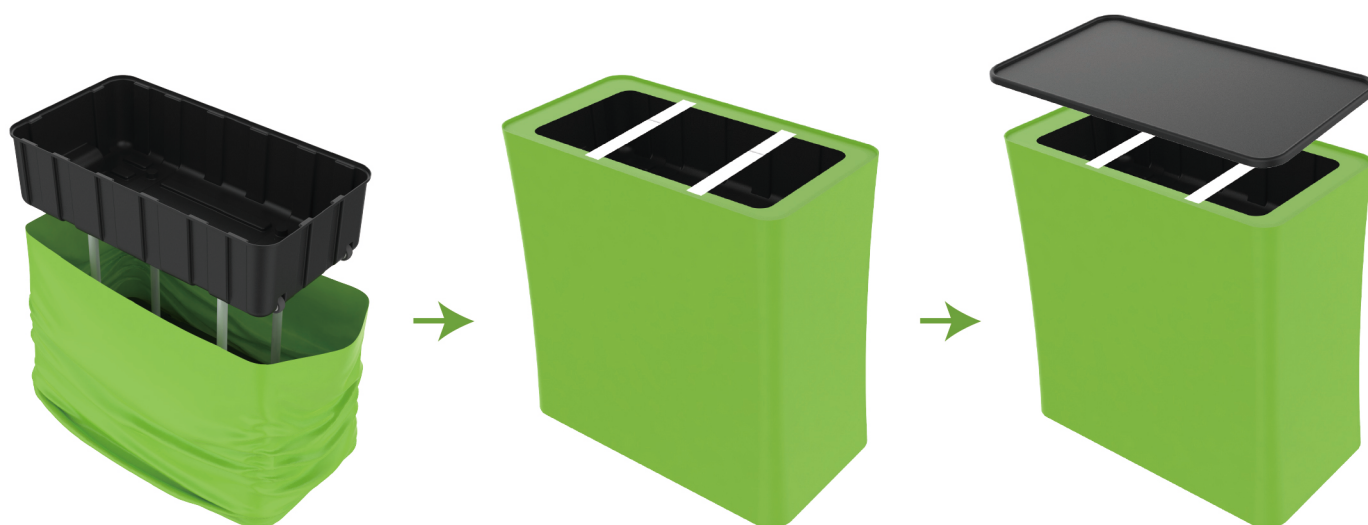




## STEPS

## STEP 04

Wrap fabric banner from bottom to top & twist it to be smooth, lay hard case's intermediate panel on podium's top.



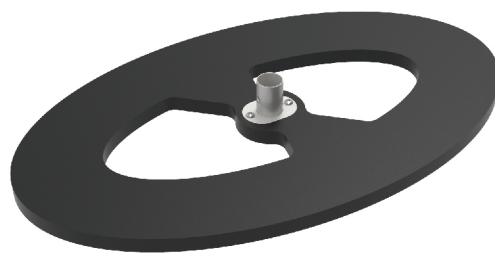


★ One Tool (Hex Wrench) **STEPS**

(1) Aluminum pole



(2) MDF panel



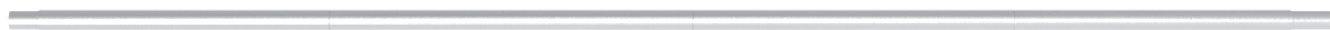
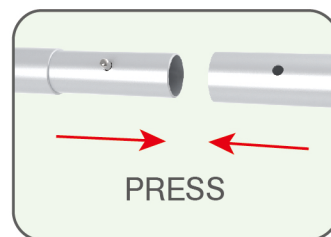
(3) Fabric banner



(4) Optional Accessory

**STEP 01**

To assemble the poles according to labelling



## STEPS

## STEP 02

To put the bottom MDF panel upside down and clip the fabric banner to the slot

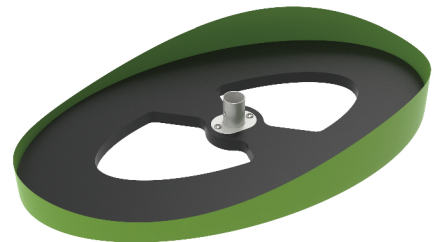
\*\*\*To put the middle of fabric bottom into the middle of bottom panel slot and start the assembly\*\*\*



BOTTOM

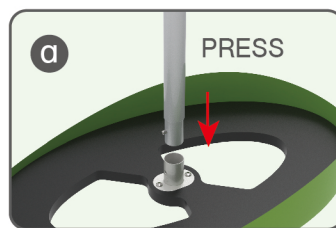


PRESS



## STEP 03

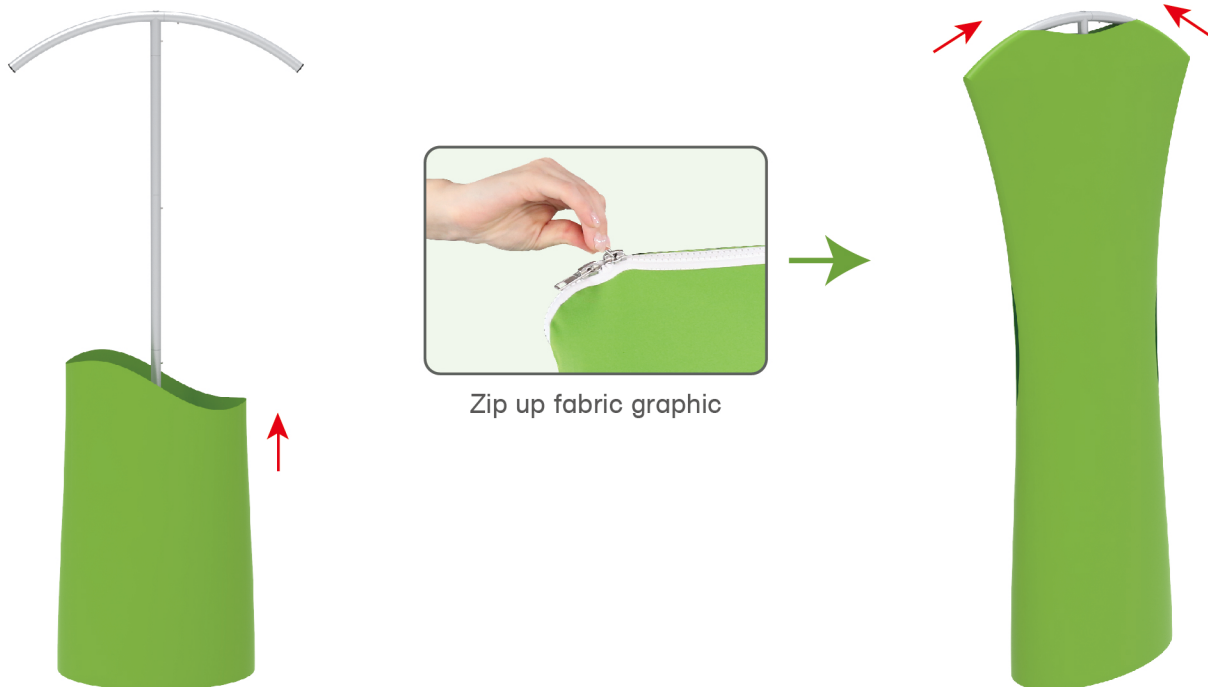
Insert the center pole into the base.



## STEPS

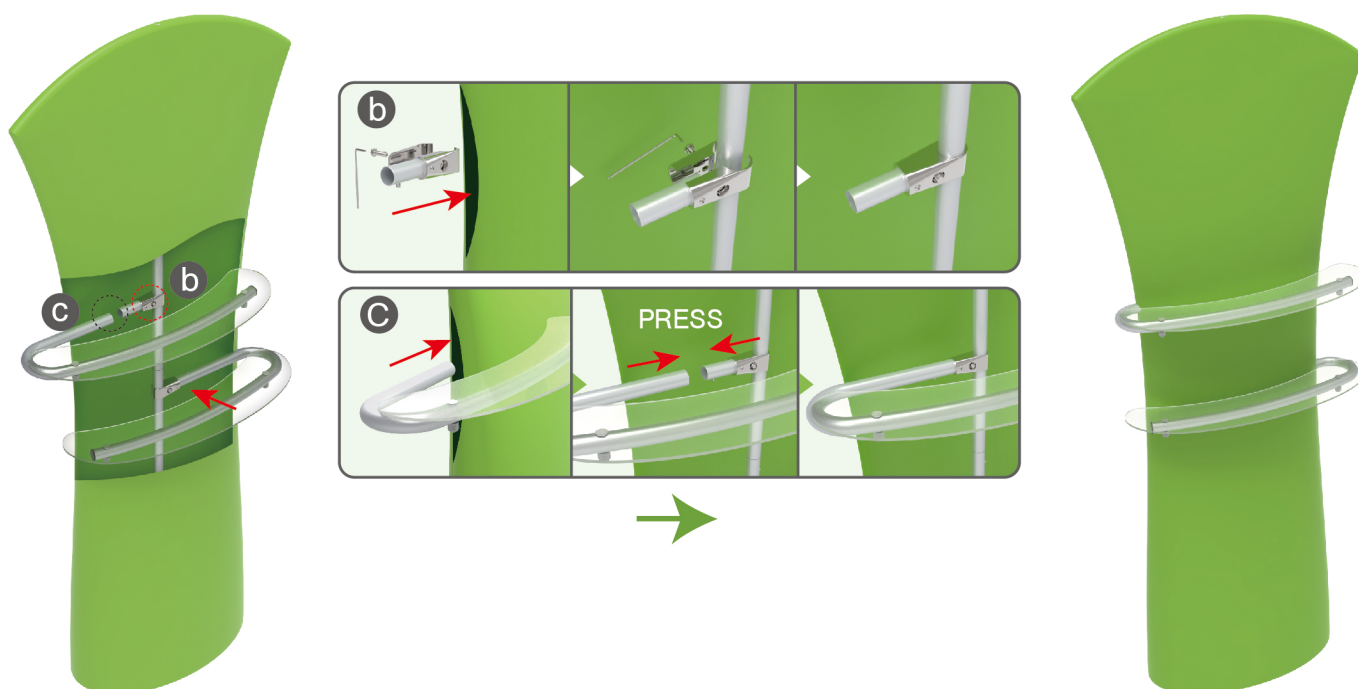
## STEP 04

Stretch the cloth cover upward and put it into the top bracket. Pull the zipper on both sides to the middle to expose the hole of the LED light on the top of the bracket



## STEP 05

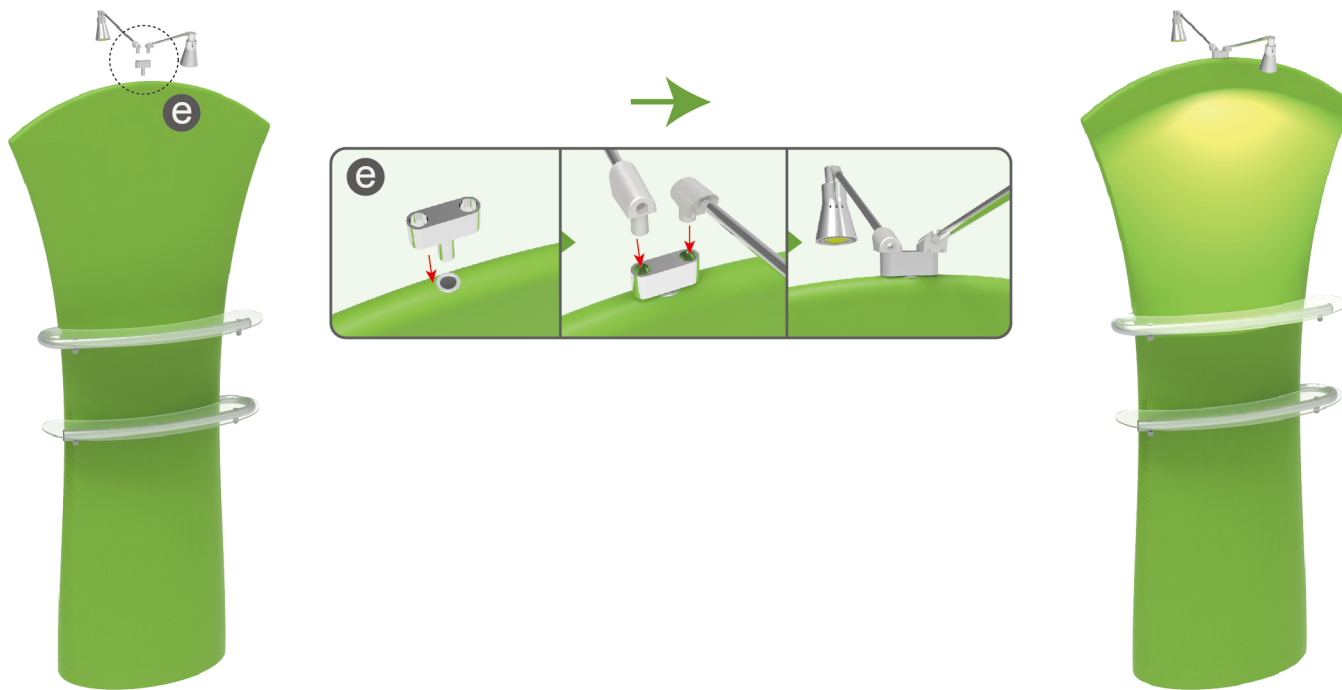
Slide the shelves through the open slits in the graphic and connect them to their support sockets.



## STEPS

## STEP 06

Place the base of the light fitting in the hole in the middle of the profile.



DT-W-01



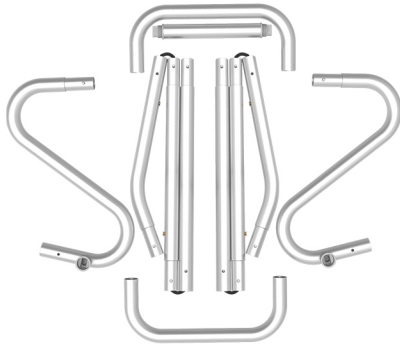
DT-W-02



DT-W-03

## STEPS

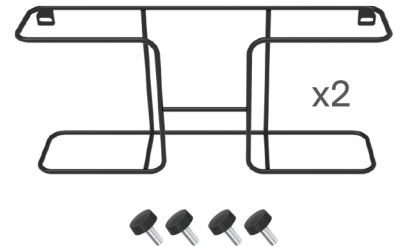
(1) Snap Tubes



(2) Printed fabric banner

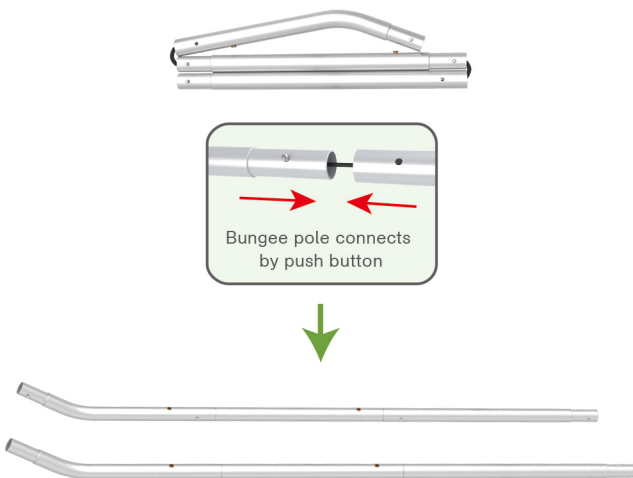


(3) Brochure rack x 2  
Screws x 4



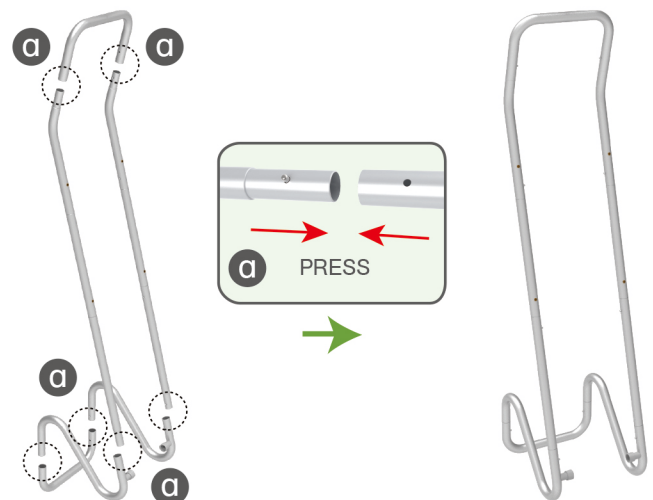
### STEP 01

To Connect the tubes according to the labellings



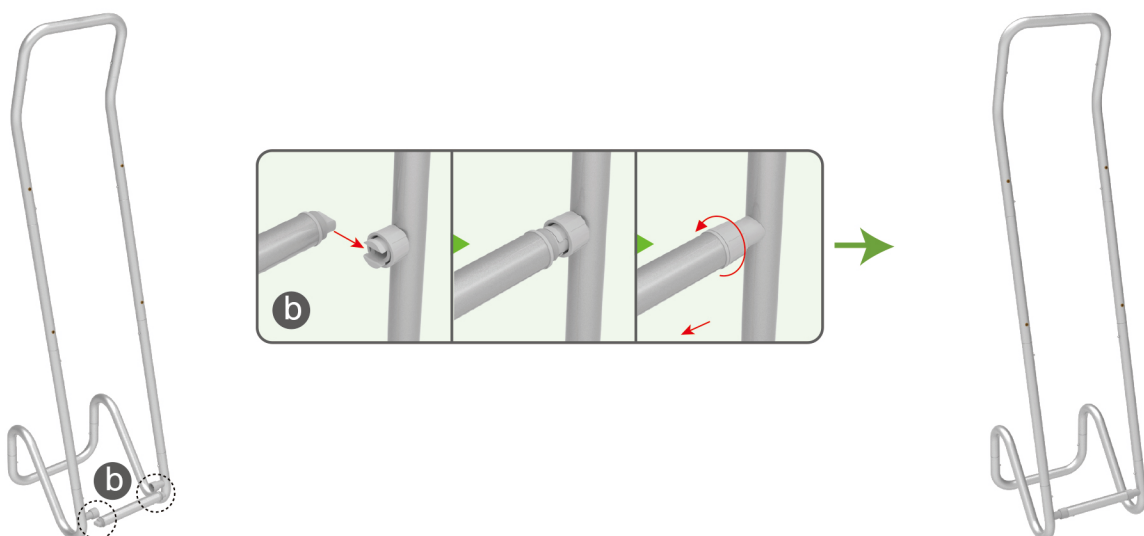
### STEP 02

To connect 2 long side tubes by the corner pieces



### STEP 03

To install the cross bar according to labellings

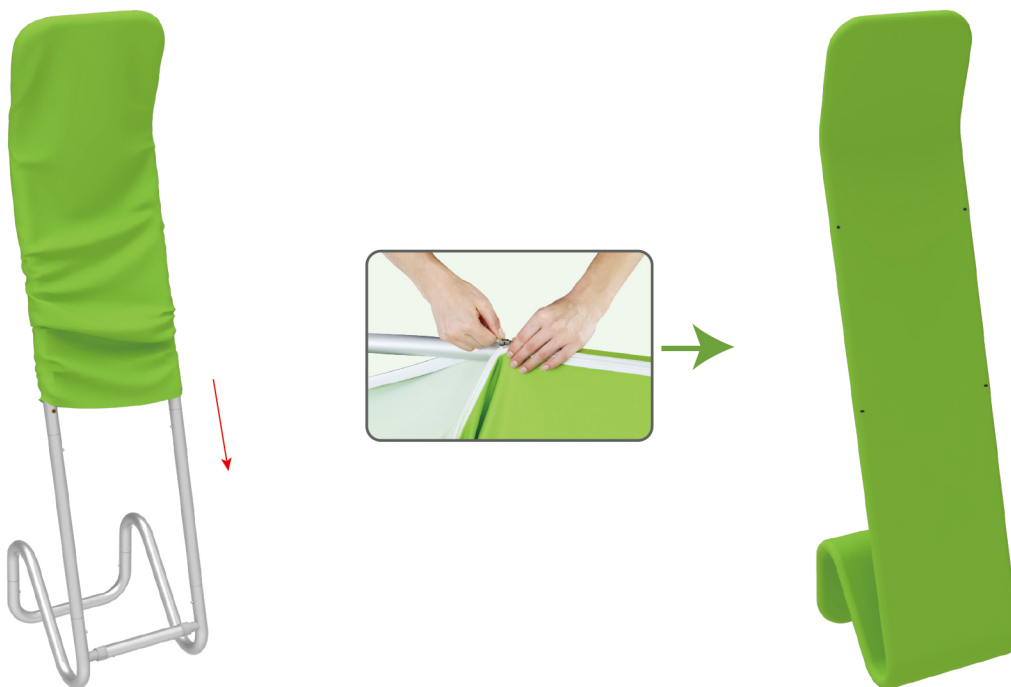




## STEPS

## STEP 04

To Wrap up the fabric banner from top to bottom and zip up.



## STEP 05

To install 2 racks by screws in position

