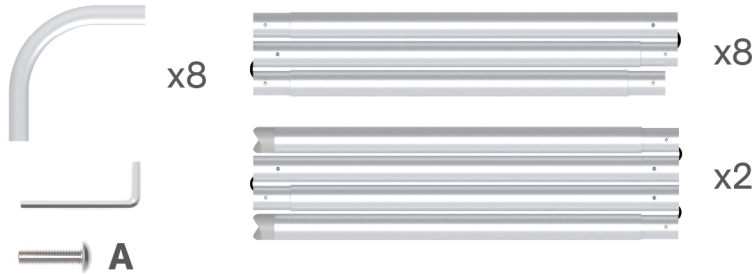


10X10FT-BOOTH-S

★ One Tool (Hex Wrench) **STEPS**

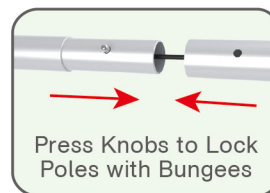
(1) Hardware



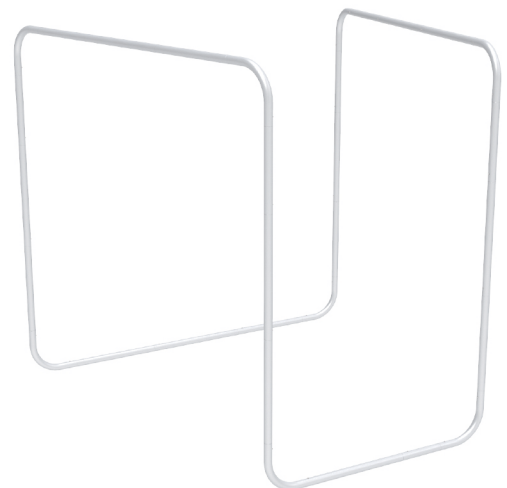
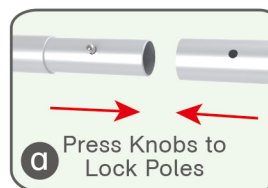
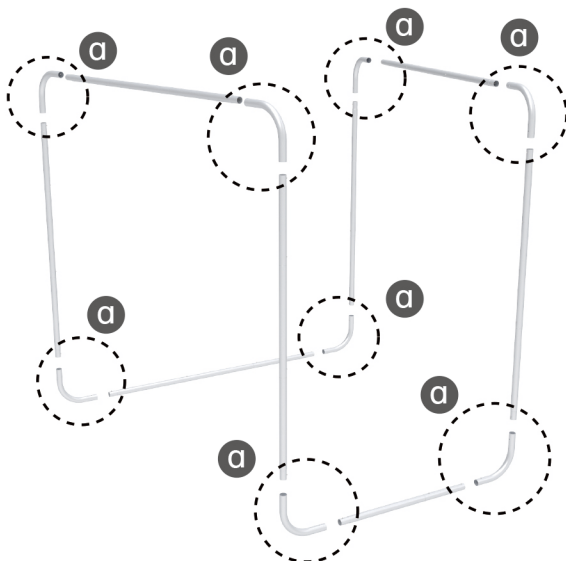
(2) Printed Graphic Fabric Banner (Optional)

**STEP 01**

Connect to make long poles according to labelings.

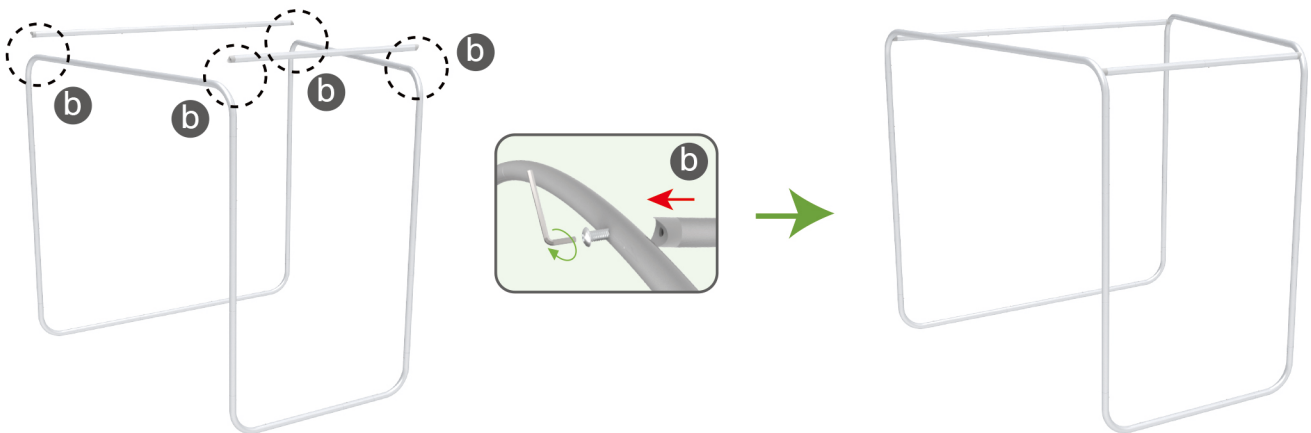
**STEP 02**

Connect long poles with corner poles according to labelings.

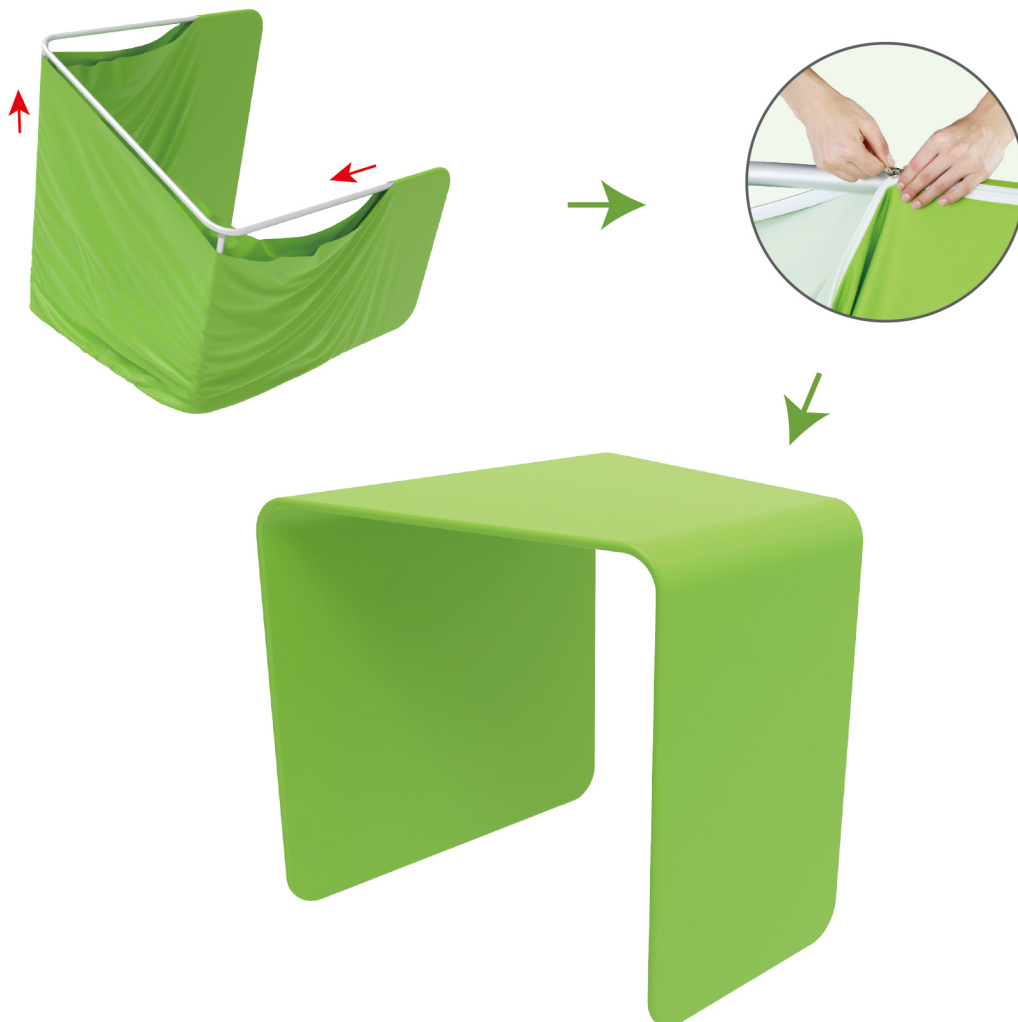


STEPS

STEP 03 Connect support poles onto frame.



STEP 04 Slide fabric banner from bottom and zip up at top.



10X10FT-BOOTH-S

STEPS

(1) Durable Plastic Hard Case, Aluminum Support Poles

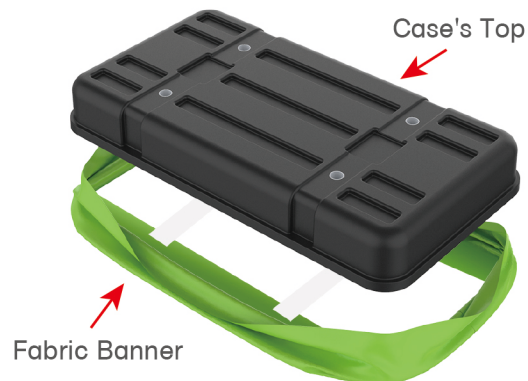


(2) Printed Graphic Fabric Banner



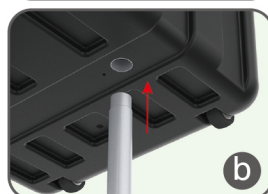
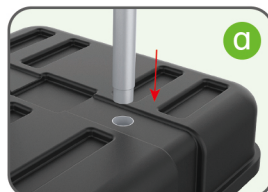
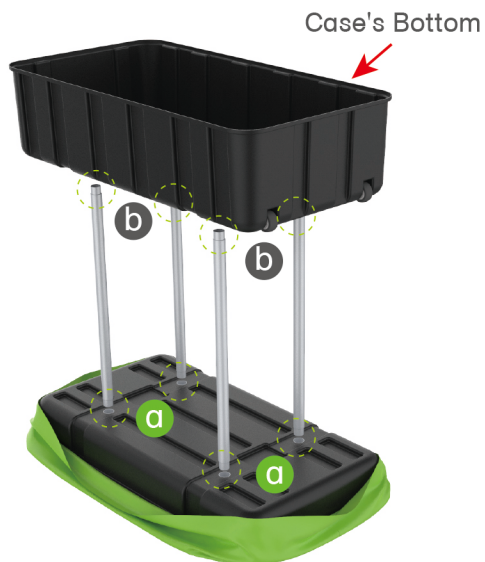
STEP 01

Put hard case's top into fabric banner.



STEP 02

Insert support poles into hard case's top & bottom.



STEPS

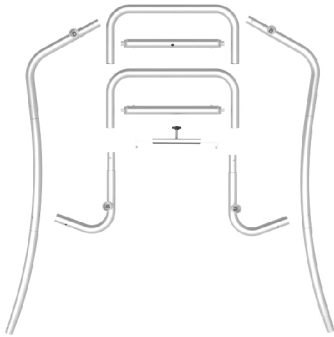
STEP 04

Wrap fabric banner from bottom to top & twist it to be smooth, lay hard case's intermediate panel on podium's top.



★ One Tool (Hex Wrench) **STEPS**

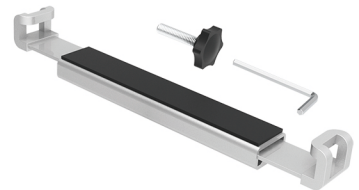
(1) Snap Tubes



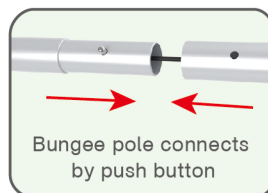
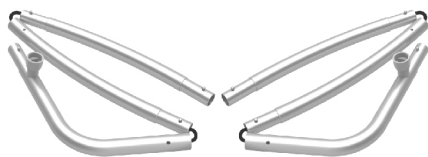
(2) Printed fabric banner



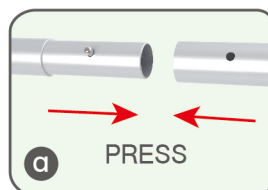
(3) Tablet PC holder

**STEP 01**

To Connect the tubes according to the labellings

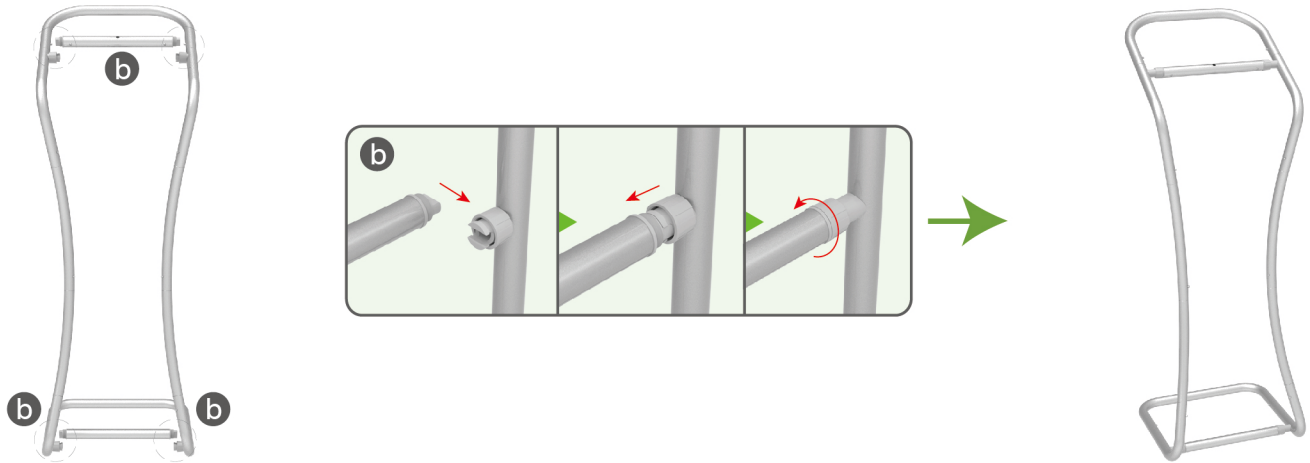
**STEP 02**

To connect 2 long side tubes by the corner pieces

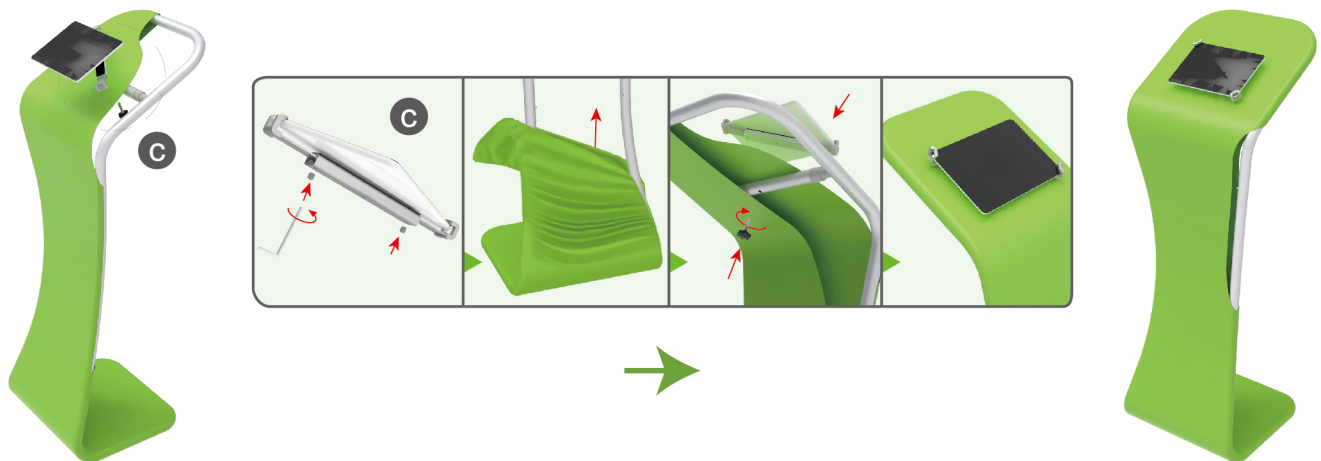


STEPS**STEP 03**

To install the cross bar according to labellings

**STEP 04**

To wrap the fabric cover from top to bottom and zip to the middle of frame, then put the iPad in the holder and adjust the holder to right size and lock it by Allen Key Afterwards, install the set to the display stand.

**STEP 05**

Zip up completely

