

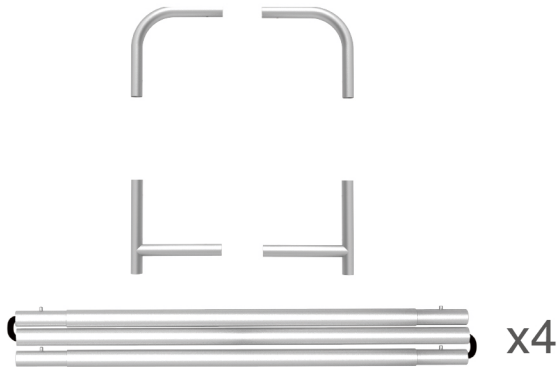
INSTRUCTION



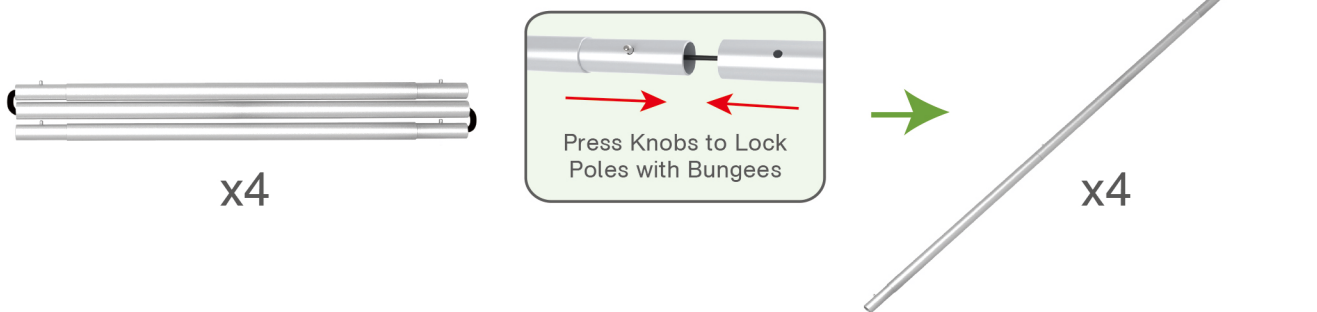
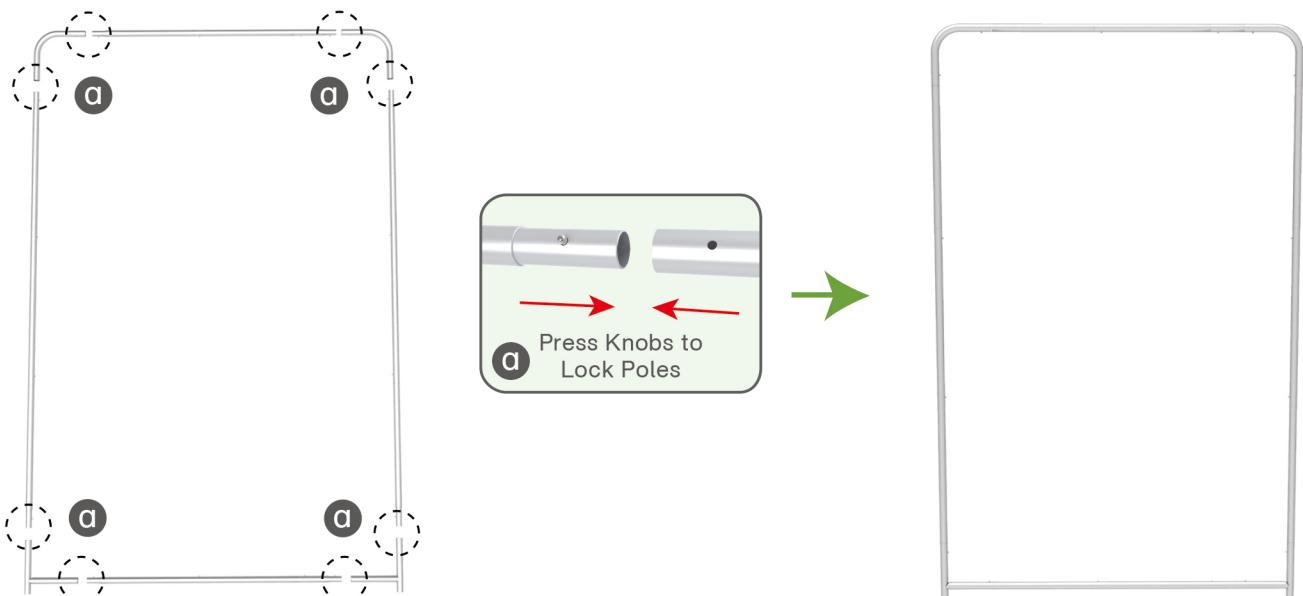
10X10FT-BOOTH-R

STEPS

(1) Hardware



(2) Printed Graphic Fabric Banner (Optional)

**STEP 01** Connect to make long poles according to labelings.**STEP 02** Connect long poles with corner poles according to labelings.

STEPS

STEP 03 Slide fabric banner on frame from top and zip up at bottom.



(1) Hardware



(2) Printed Graphic Fabric Banner (Optional)

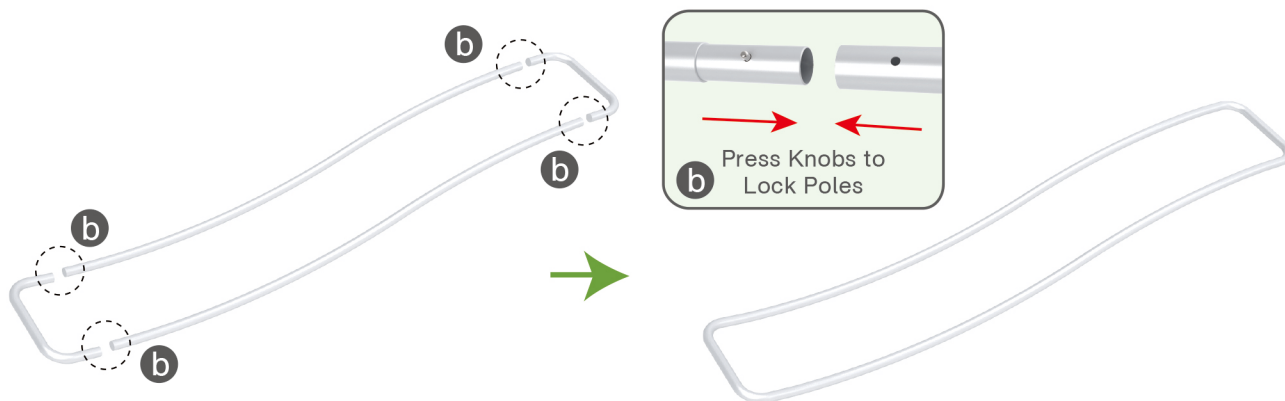


STEP 01 Connect to make long poles according to labelings.

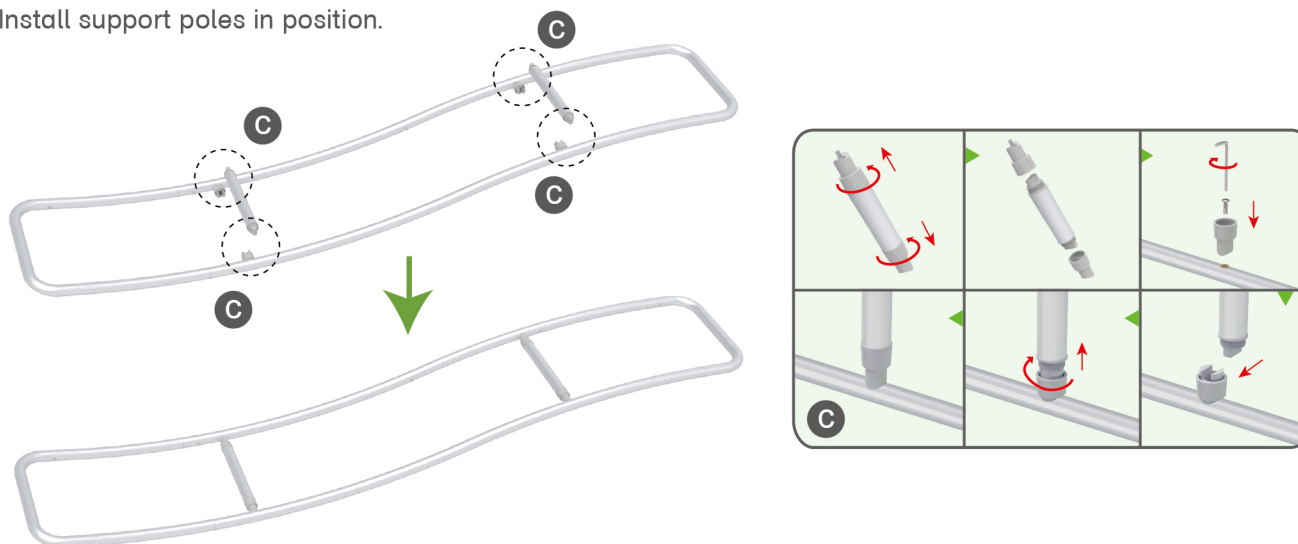


STEPS

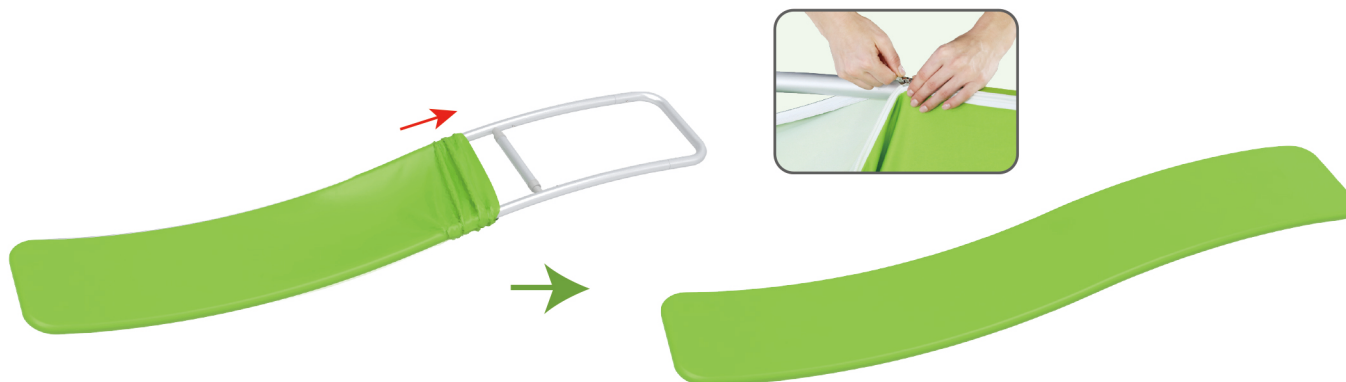
STEP 02 Connect long poles with corner poles according to labelings.

**STEP 03**

Install support poles in position.

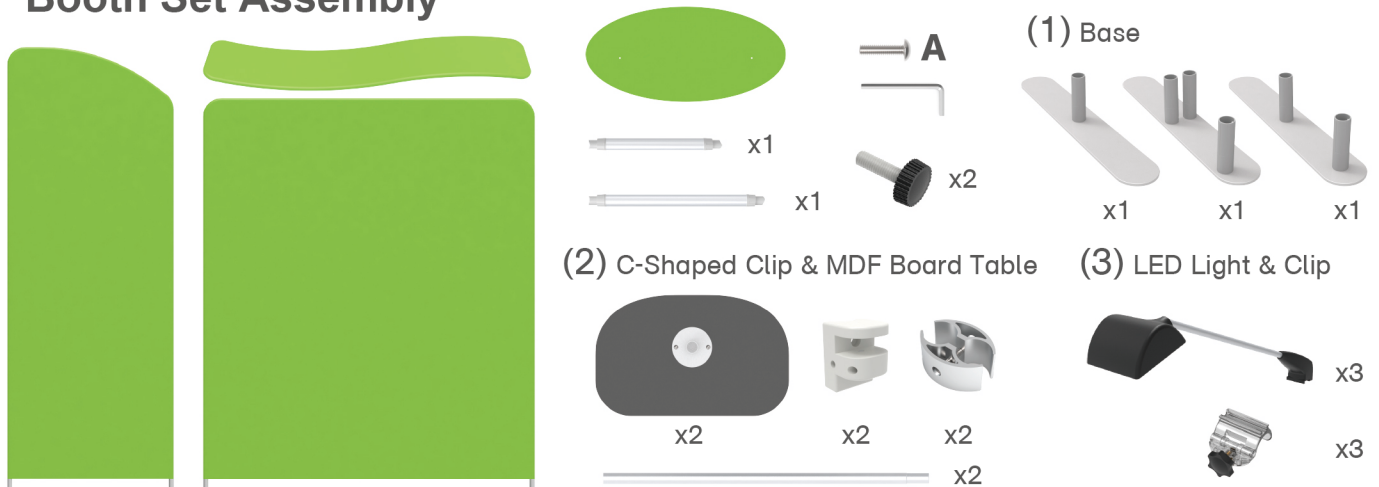
**STEP 04**

Slide fabric banner on frame from left and zip up at right.

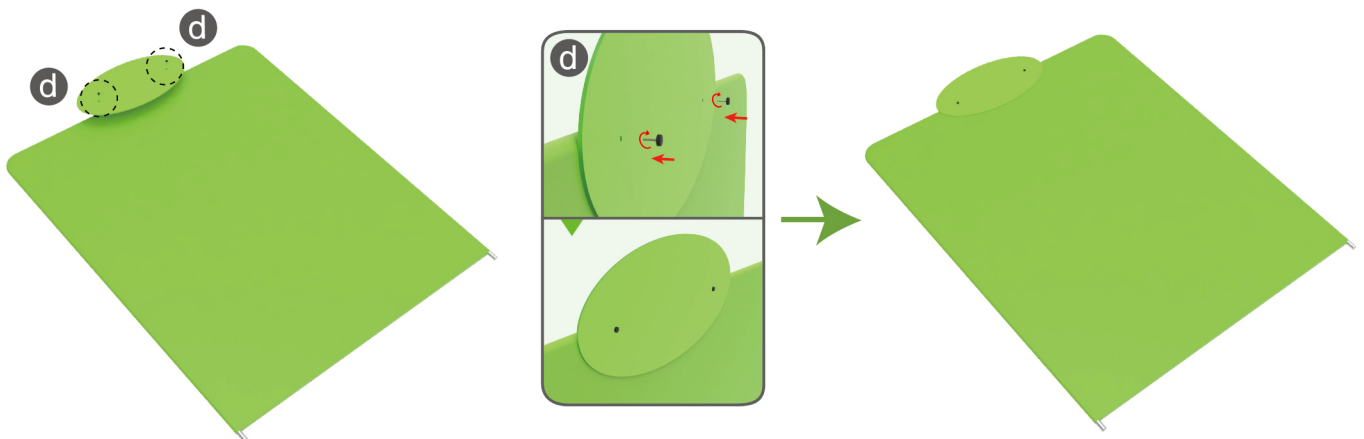


STEPS

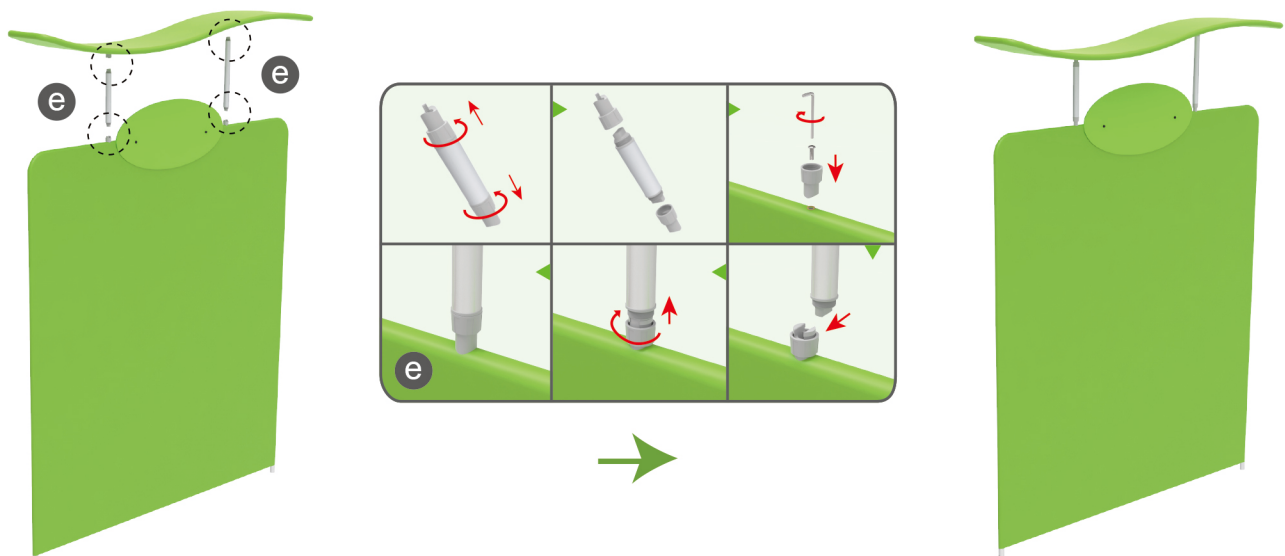
Booth Set Assembly



STEP 01 Screw header onto display stand with thumb screws.

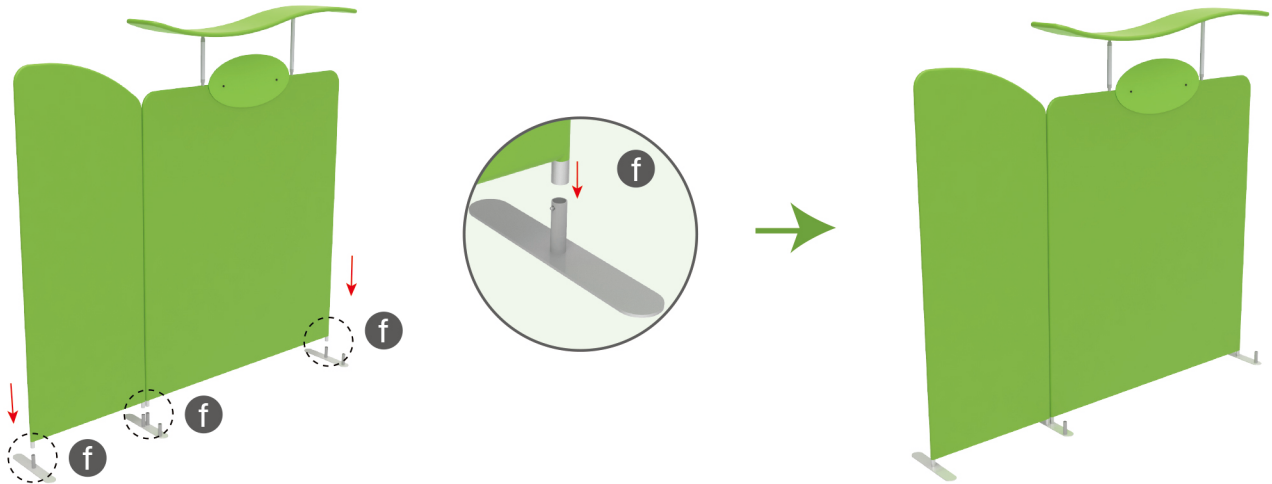
**STEP 02**

Connect canopy and display stand with support poles.

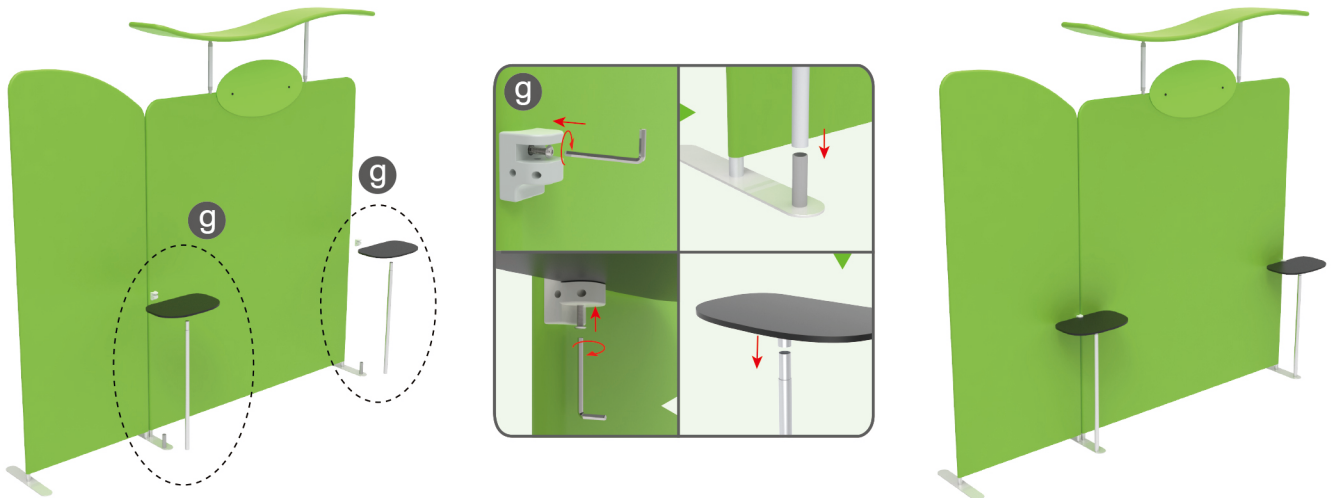


STEPS

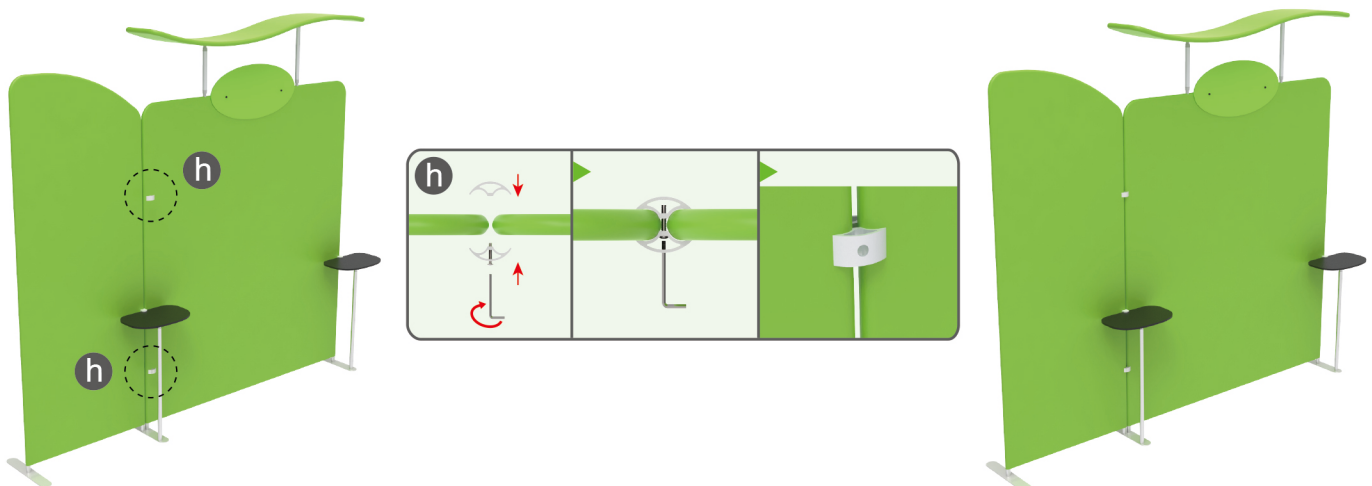
STEP 03 Insert display stands onto feet by pressing their knobs.

**STEP 04**

Insert pole into base, screw clamp with hex wrench, place MDF board onto pole & insert into clamp with screw.

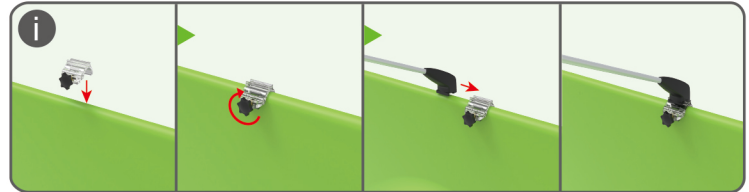


STEP 05 Interconnect display stands with C-shaped clips.



STEPS

STEP 06 Screw light clips at top of display stands, slide lights onto them and adjust their direction.



10X10FT-BOOTH-R

STEPS

(1) Durable Plastic Hard Case, Aluminum Support Poles

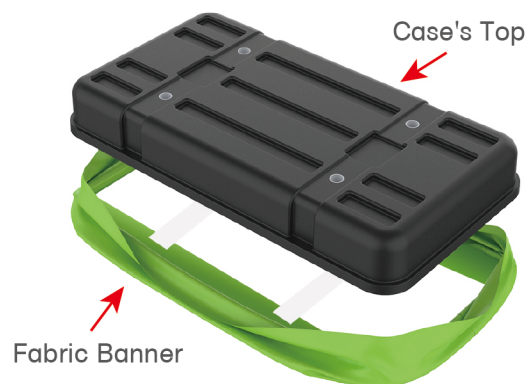


(2) Printed Graphic Fabric Banner



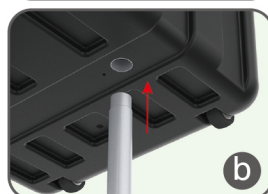
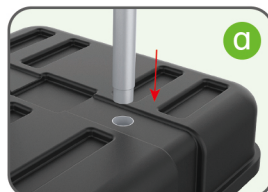
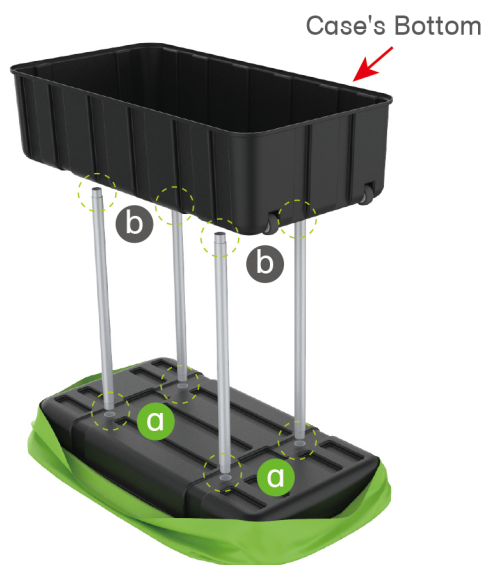
STEP 01

Put hard case's top into fabric banner.



STEP 02

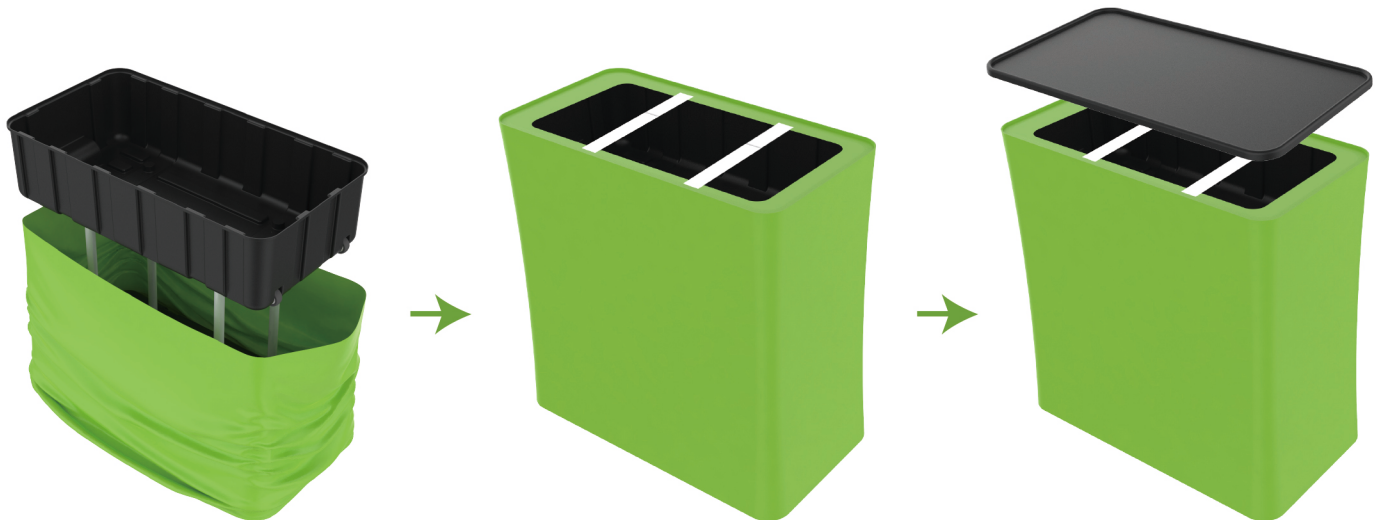
Insert support poles into hard case's top & bottom.



STEPS

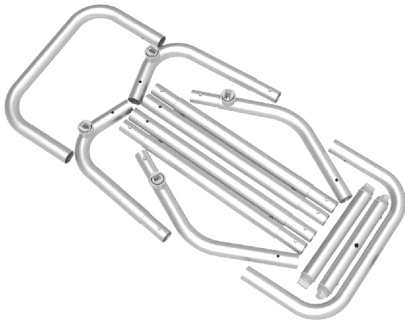
STEP 04

Wrap fabric banner from bottom to top & twist it to be smooth, lay hard case's intermediate panel on podium's top.

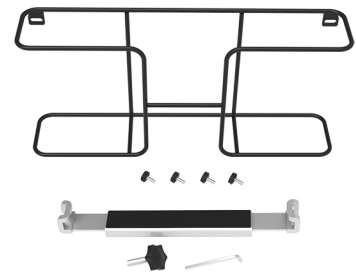


★ One Tool (Hex Wrench) **STEPS**

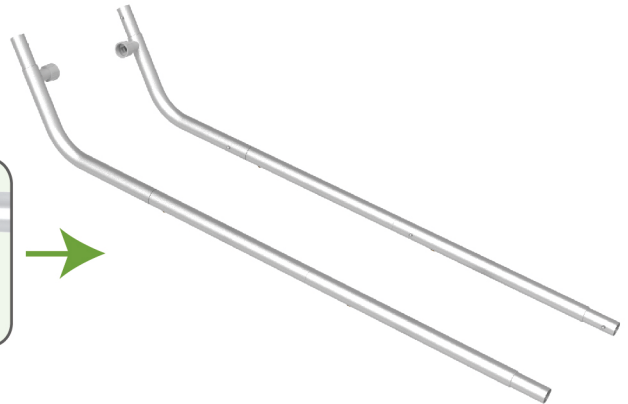
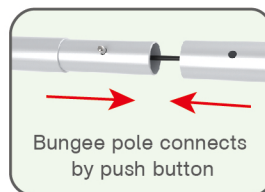
(1) Snap Tubes



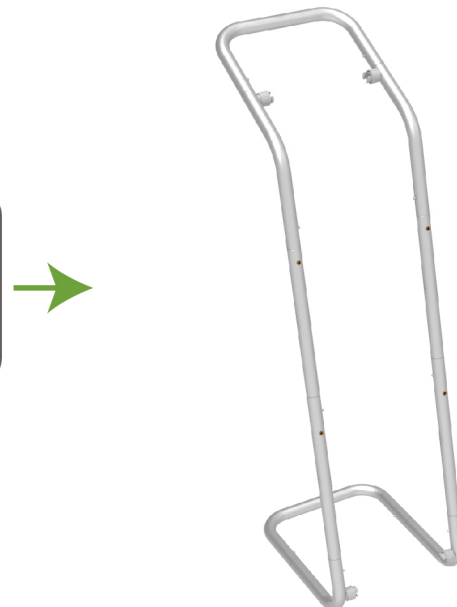
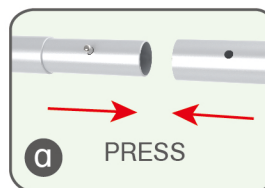
(2) Printed fabric banner

(3) Brochure rack x 2 / Screws x 4
Tablet PC holder x1**STEP 01**

To Connect the tubes according to the labellings

**STEP 02**

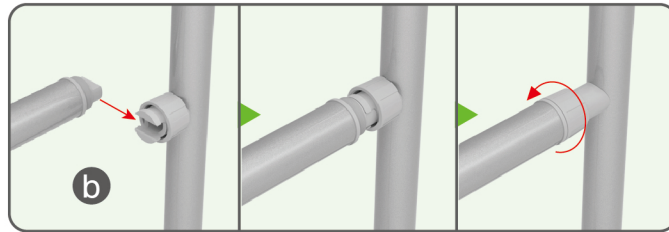
To connect 2 long side tubes by the corner pieces



STEPS

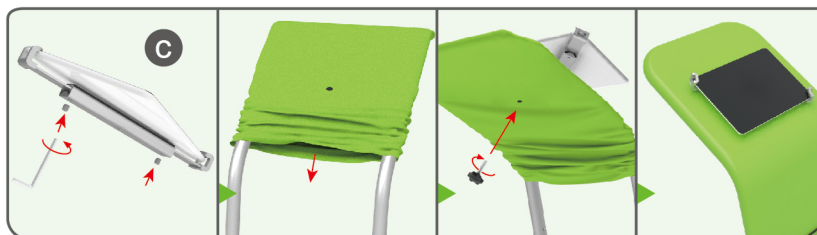
STEP 03

To install the cross bar according to labellings



STEP 04

To wrap the fabric from top to the middle of frame, then put the iPad in the holder and adjust the holder to right size and lock it by Allen Key Afterwards, install the set to the display stand.



STEPS

STEP 05

To pull the fabric banner to bottom and zip up.



STEP 06

To Install 2 racks by screws in position

