

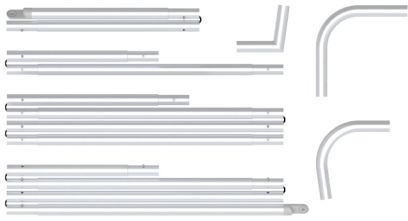
# INSTRUCTION



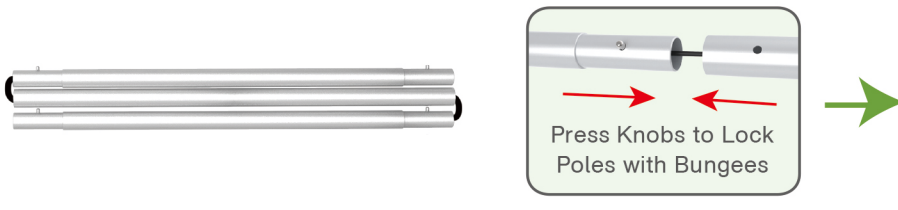
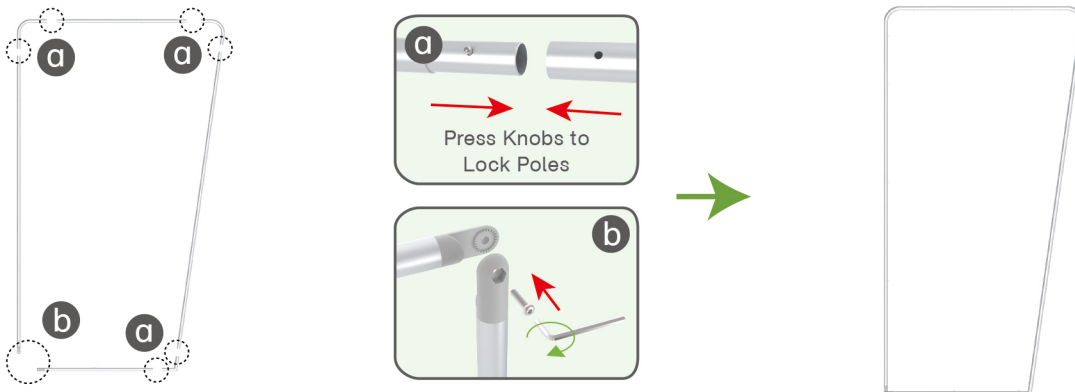
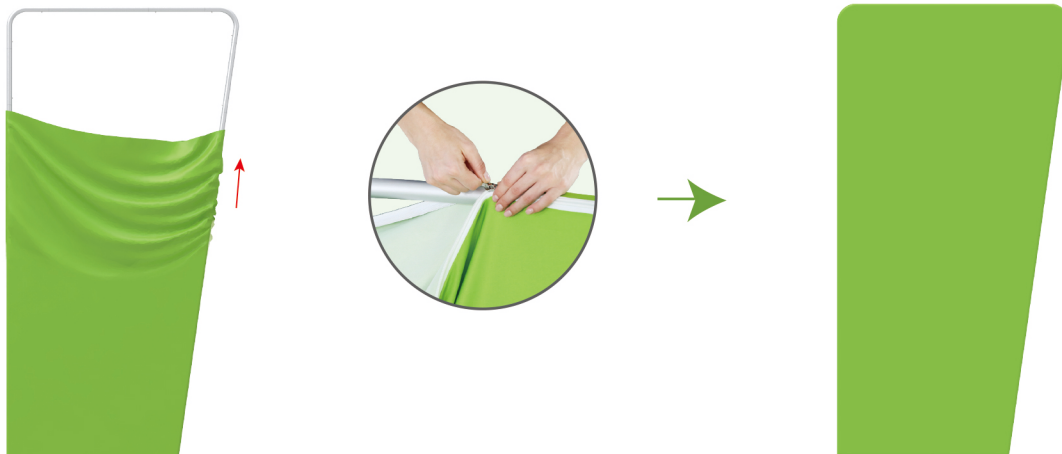
10X10FT-BOOTH-N

## STEPS

(1) Hardware

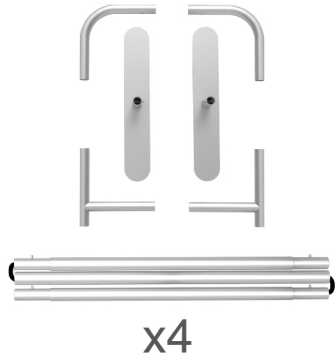


(2) Printed Graphic Fabric Banner (Optional)

**STEP 01** Connect to make long poles according to labelings.**STEP 02** Connect long poles with corner poles according to labelings.**STEP 03** Slide fabric banner on frame from bottom and zip up at top.

## STEPS

## (1) Hardware

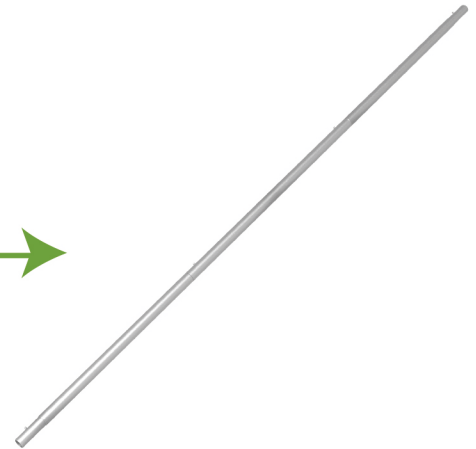
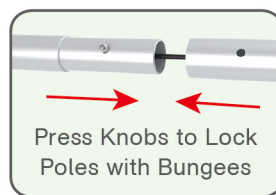


## (2) Printed Graphic Fabric Banner (Optional)



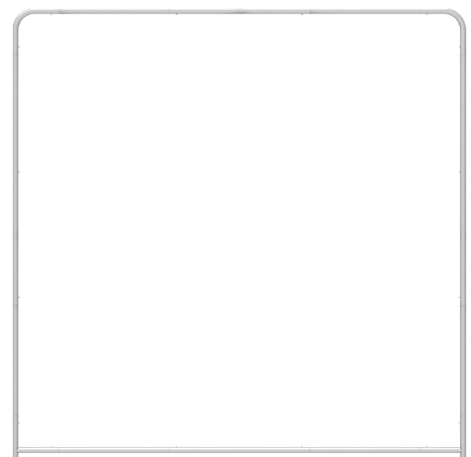
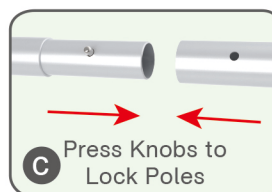
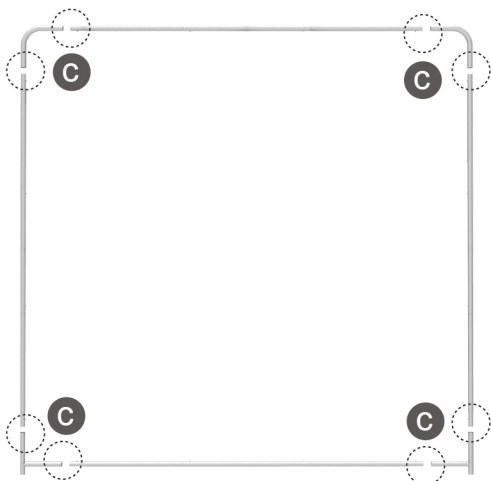
## STEP 01

Connect to make long poles according to labelings.



## STEP 02

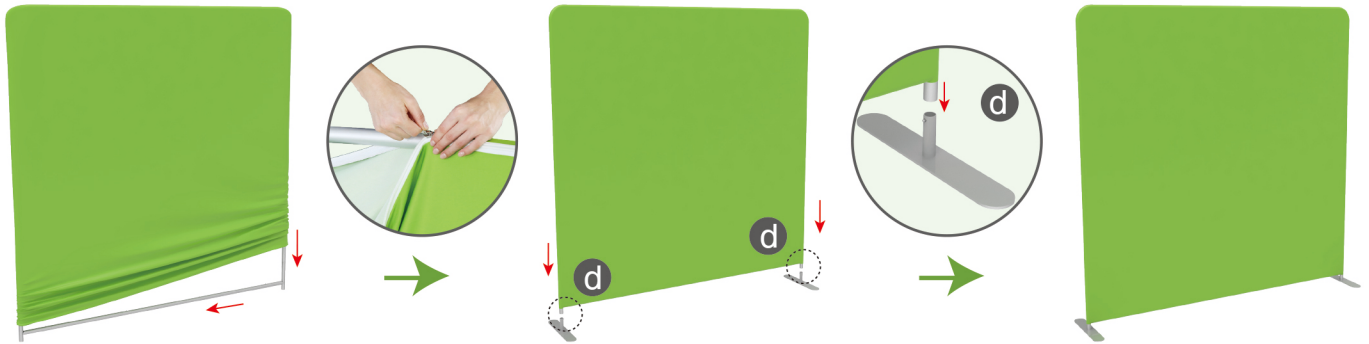
Connect long poles with corner poles according to labelings.



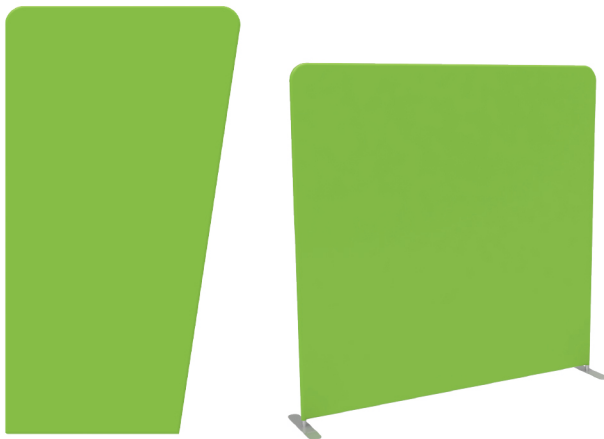
## STEPS

## STEP 03

Slide fabric banner on frame from top and zip up at bottom, insert them onto feet by pressing their knobs.



## Booth Set Assembly



(1) Arm Clip

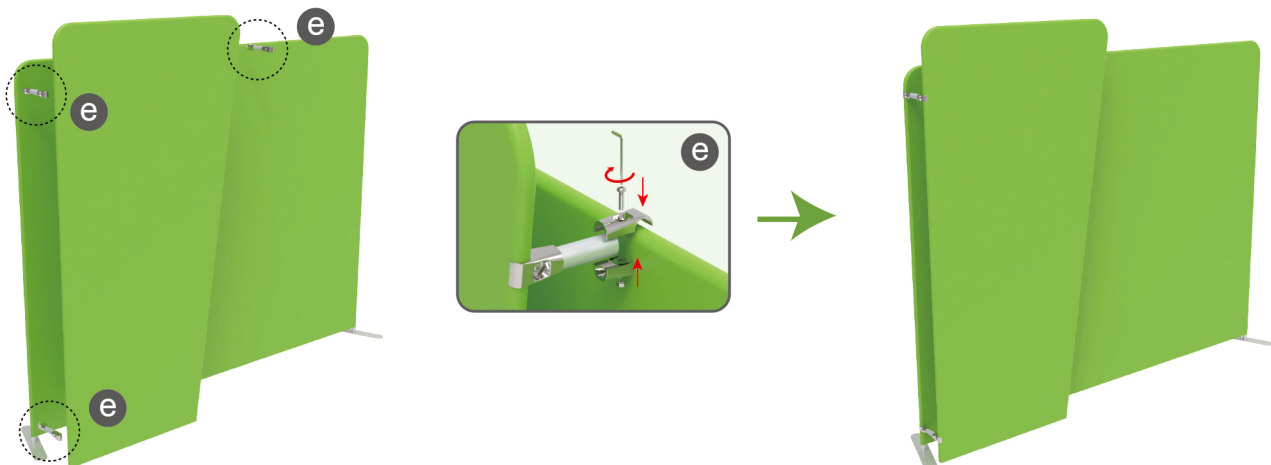


(2) LED Light & Clip



## STEP 01

Connect display stands with joint clamps.

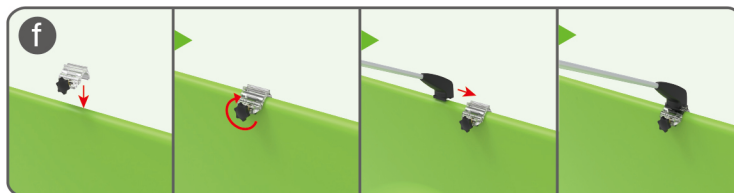




## STEPS

## STEP 02

Screw light clips at top of display stands, slide lights onto them and adjust their direction.



10X10FT-BOOTH-N

## STEPS

(1) Durable Plastic Hard Case, Aluminum Support Poles

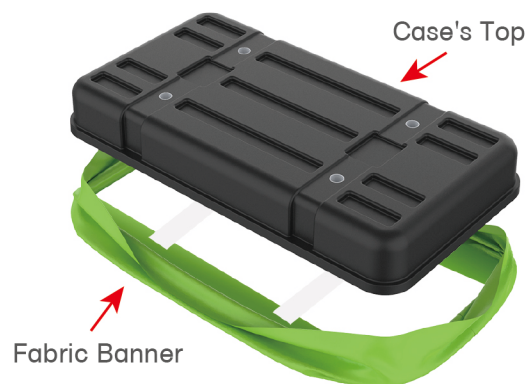


(2) Printed Graphic Fabric Banner



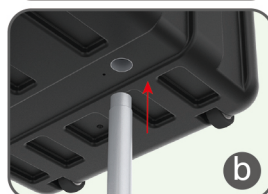
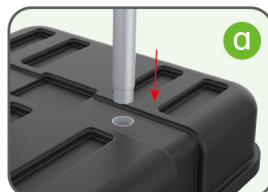
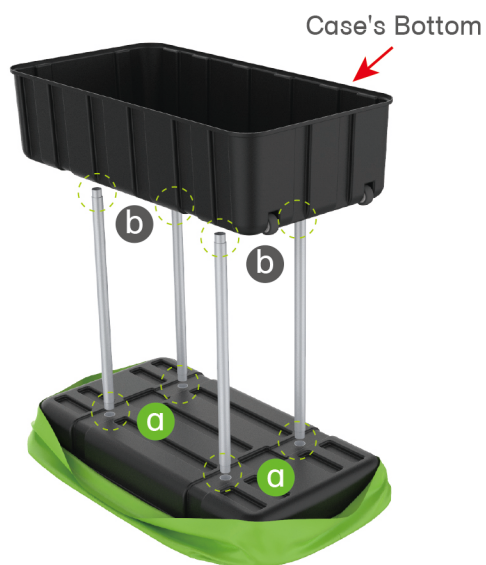
## STEP 01

Put hard case's top into fabric banner.



## STEP 02

Insert support poles into hard case's top &amp; bottom.



## STEPS

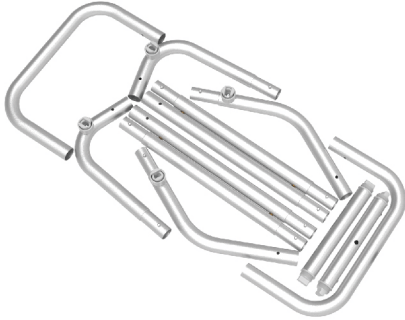
## STEP 04

Wrap fabric banner from bottom to top & twist it to be smooth, lay hard case's intermediate panel on podium's top.

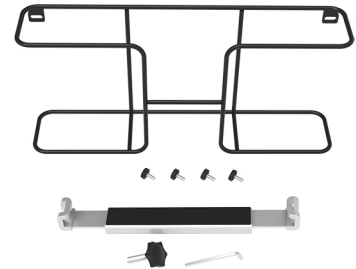


★ One Tool (Hex Wrench) **STEPS**

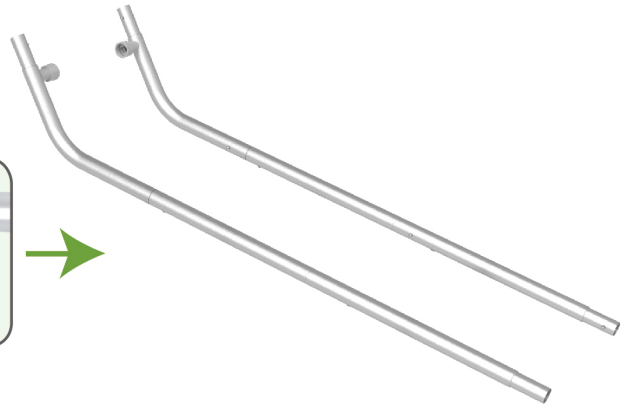
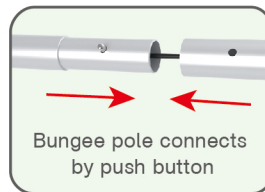
(1) Snap Tubes



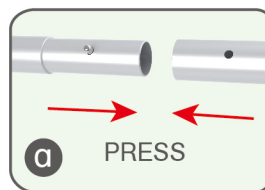
(2) Printed fabric banner

(3) Brochure rack x 2 / Screws x 4  
Tablet PC holder x1**STEP 01**

To Connect the tubes according to the labellings

**STEP 02**

To connect 2 long side tubes by the corner pieces

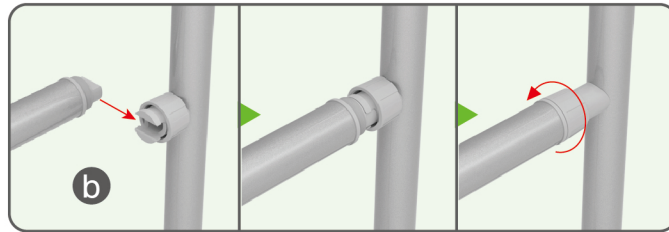




## STEPS

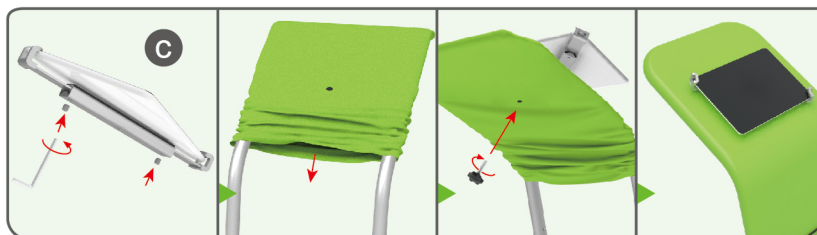
## STEP 03

To install the cross bar according to labellings



## STEP 04

To wrap the fabric from top to the middle of frame, then put the iPad in the holder and adjust the holder to right size and lock it by Allen Key Afterwards, install the set to the display stand.



## STEPS

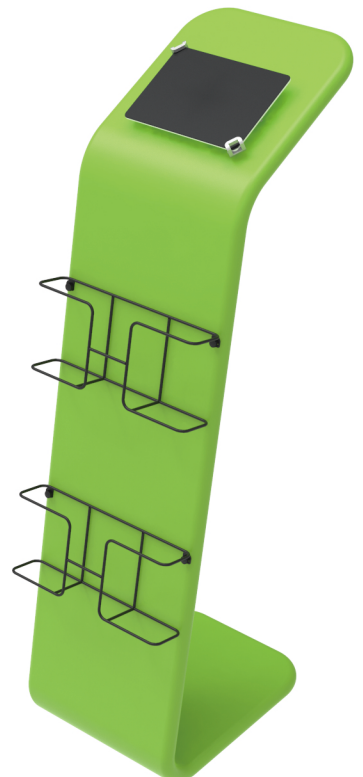
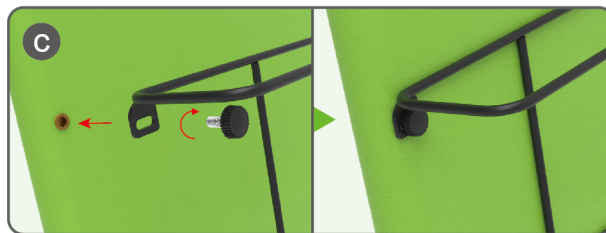
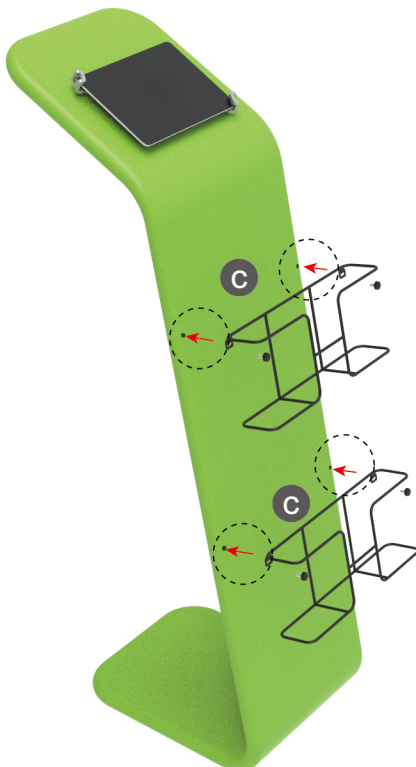
## STEP 05

To pull the fabric banner to bottom and zip up.



## STEP 06

To Install 2 racks by screws in position



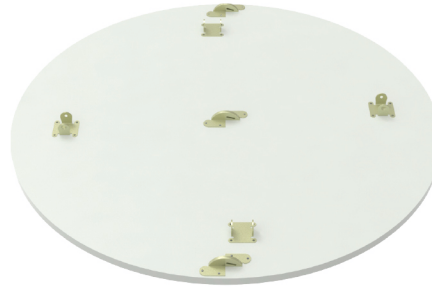


## STEPS

## (1) Hardware



## (2) Countertop Panel



## (3) Fixing Accessory

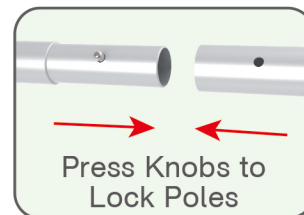


## (4) Printed Graphic Fabric Banner



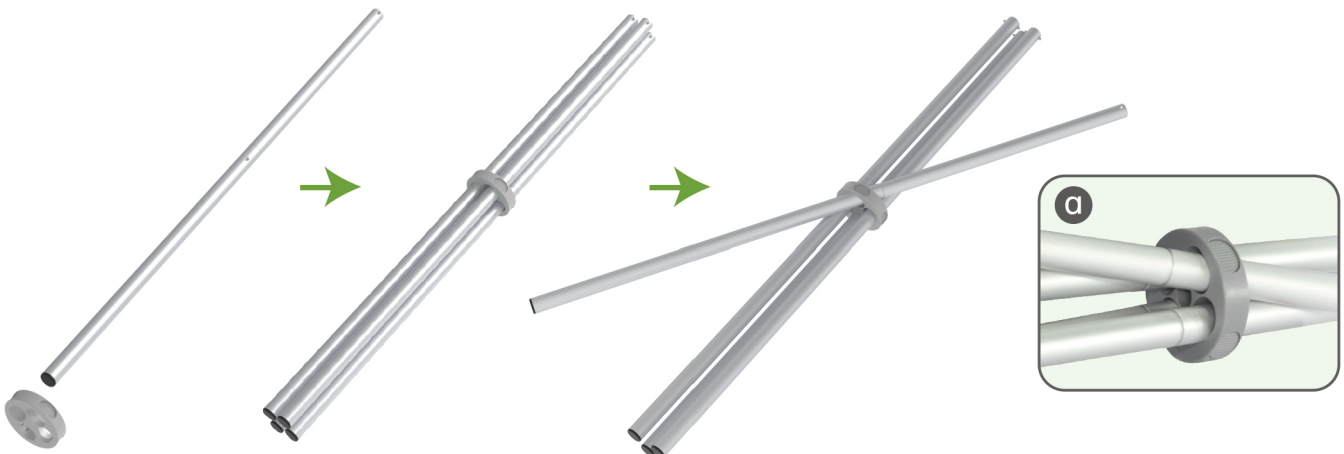
## STEP 01

Connect to make long poles according to labelings.



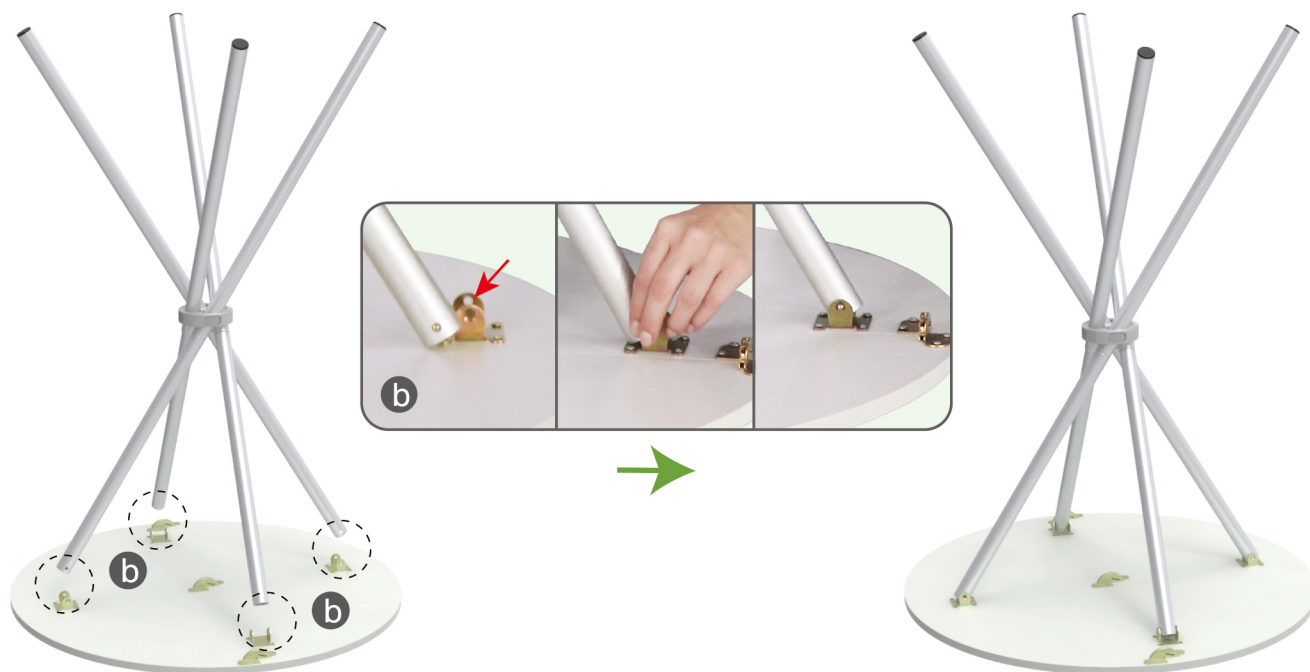
## STEP 02

Insert poles into fixing accessory until you hear a 'Ding' sound to make poles' knobs clip into it & its concave parts pop out.



## STEPS

**STEP 03** Press poles' knobs to clip into countertop's slot.

**STEP 04**

Wrap fabric banner from top to bottom, put poles into pockets & zip up.

