

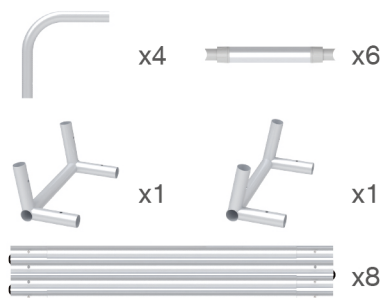
INSTRUCTION



10X10FT-BOOTH-J

STEPS

(1) Hardware



(2) Printed Graphic Fabric Banner (Optional)

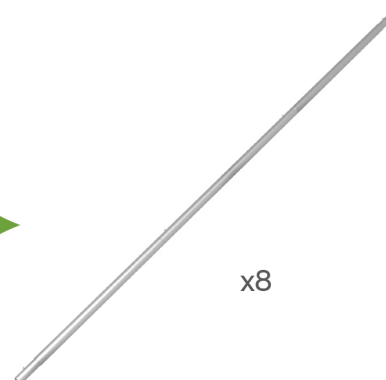
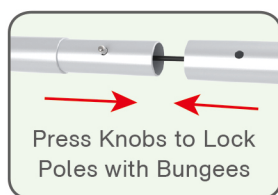


(3) LED Light & Clip



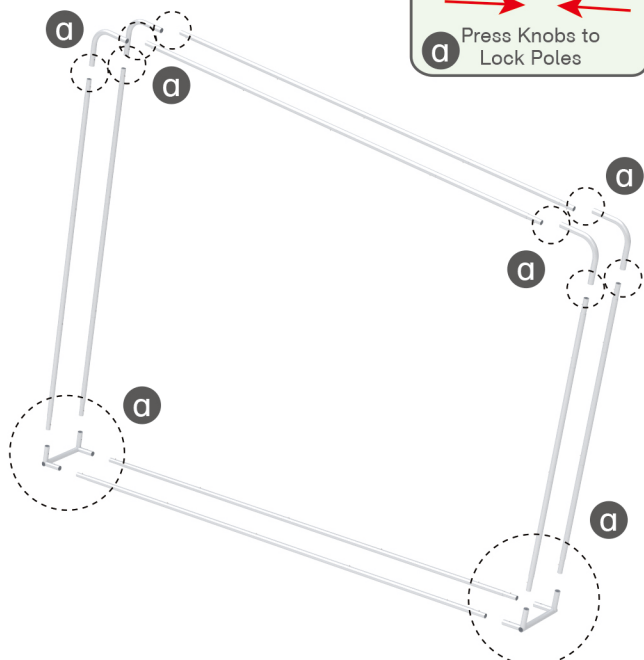
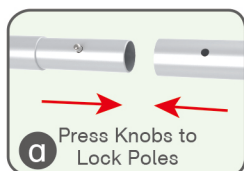
STEP 01

Connect to make long poles according to labelings.



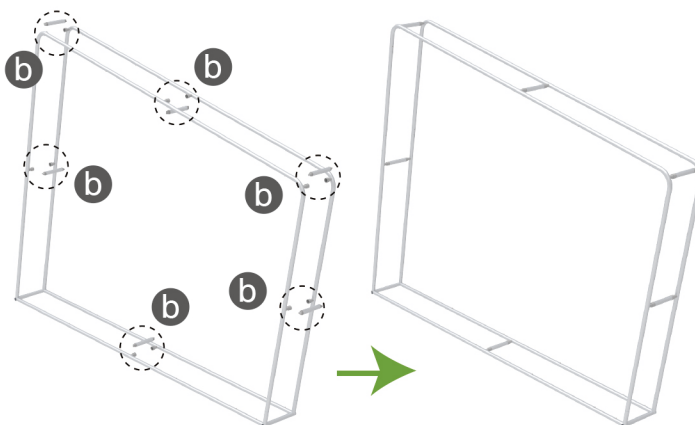
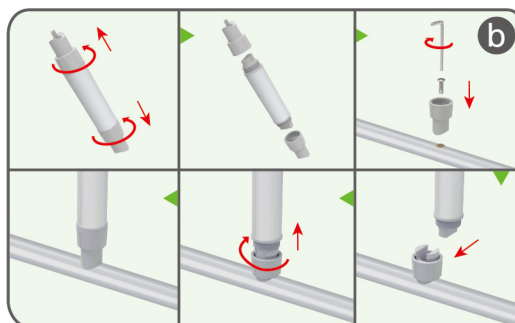
STEP 02

Connect long poles with corner poles according to labelings.



STEP 03

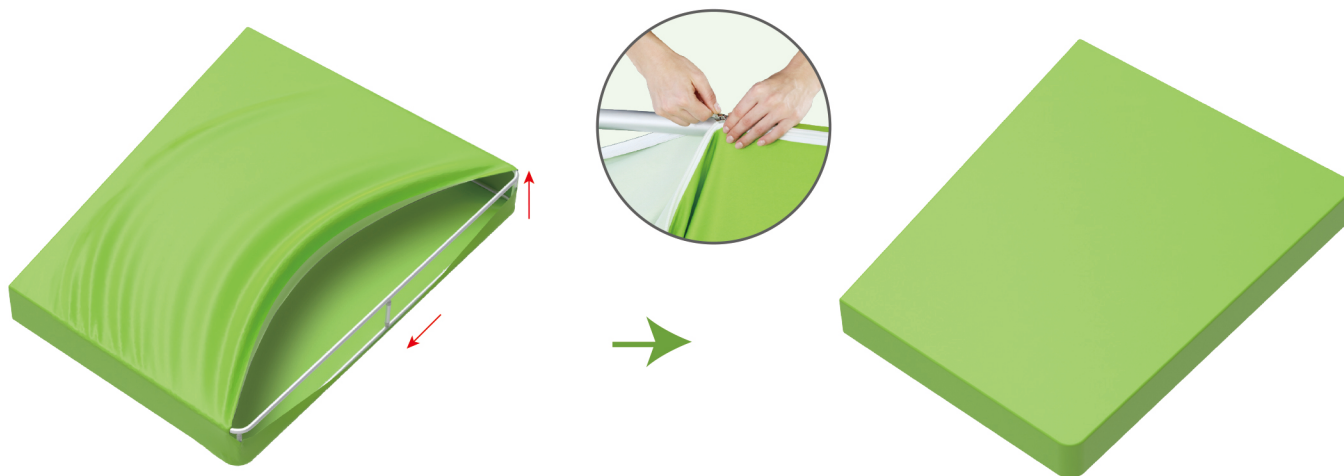
Connect support poles onto column frame.



STEPS

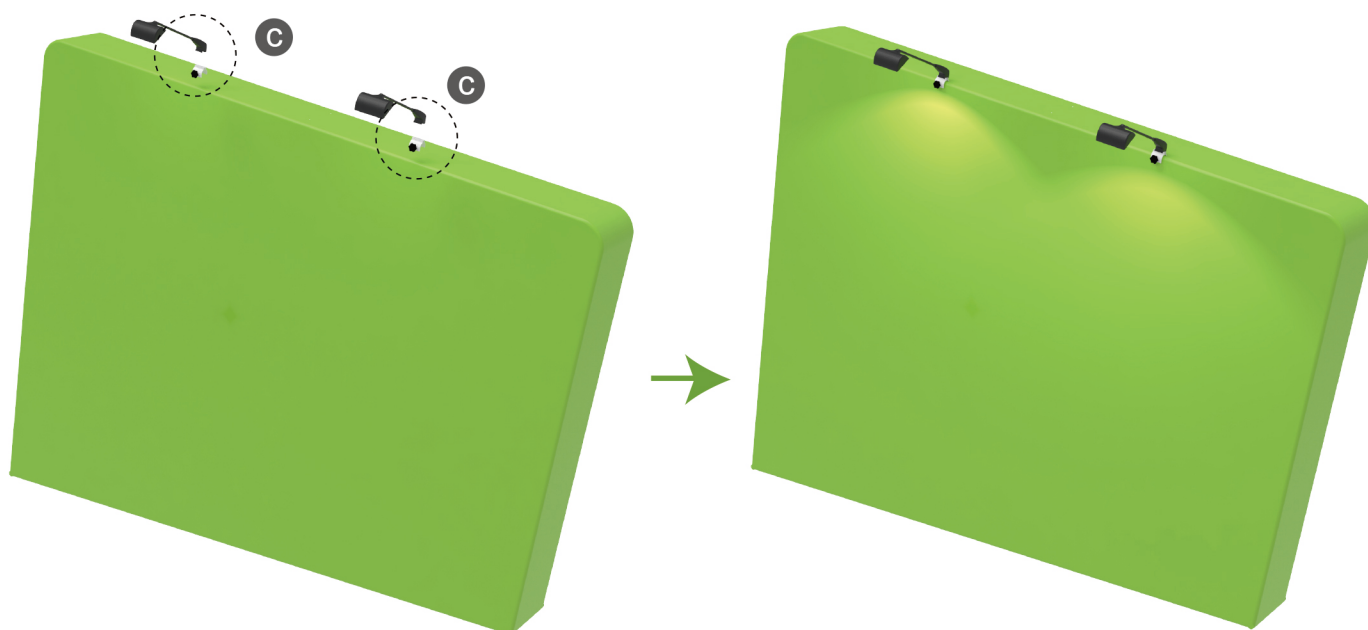
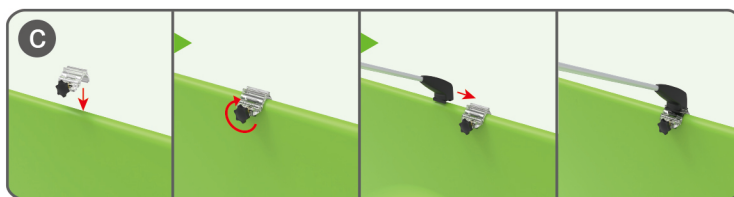
STEP 04

Slide fabric banner on frame from top and zip up at bottom.



STEP 05

Screw light clips at top of display stands, slide lights onto them and adjust their direction.



10X10FT-BOOTH-J

STEPS

(1) Durable Plastic Hard Case, Aluminum Support Poles

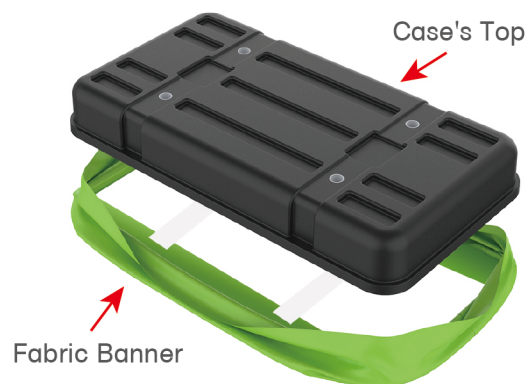


(2) Printed Graphic Fabric Banner



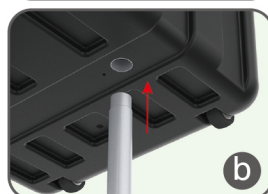
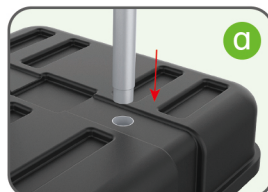
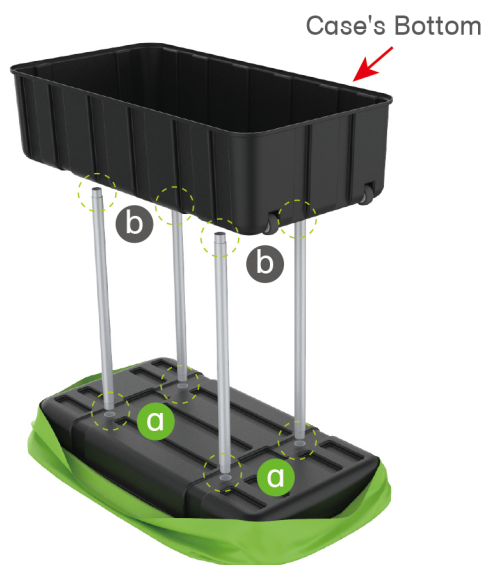
STEP 01

Put hard case's top into fabric banner.



STEP 02

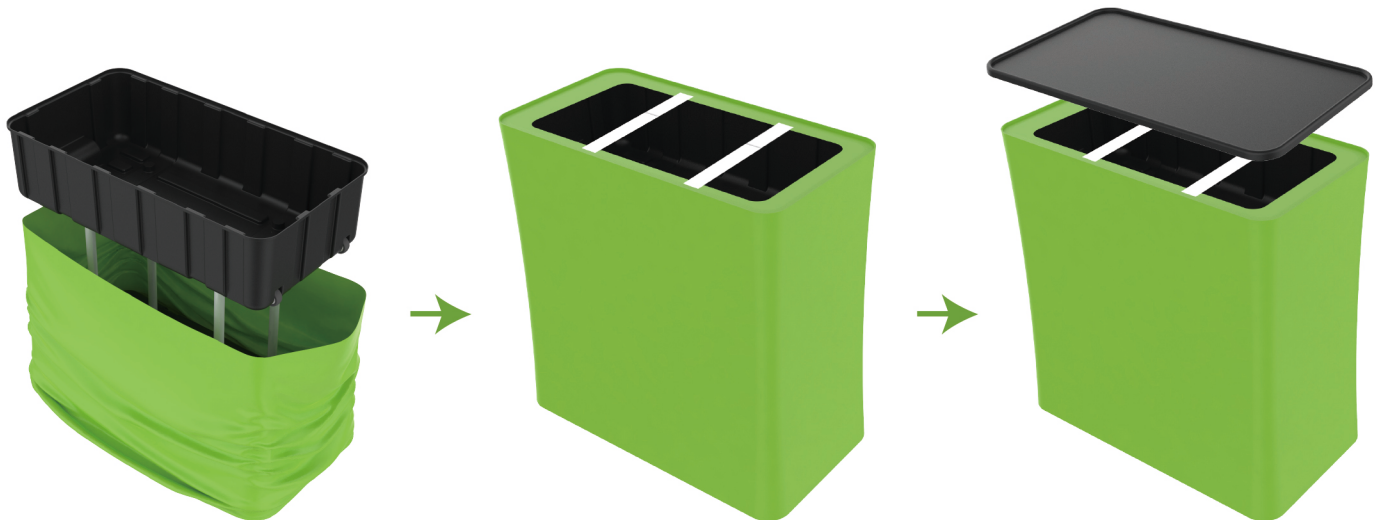
Insert support poles into hard case's top & bottom.



STEPS

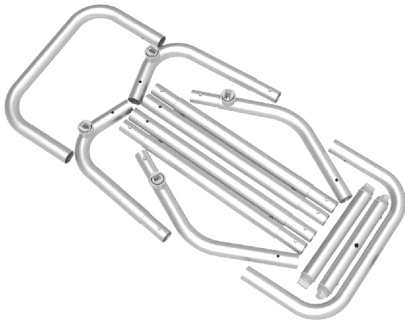
STEP 04

Wrap fabric banner from bottom to top & twist it to be smooth, lay hard case's intermediate panel on podium's top.

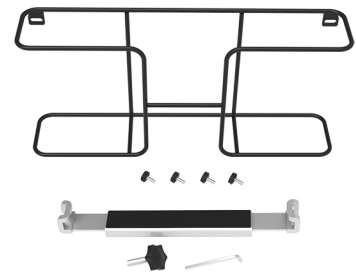


★ One Tool (Hex Wrench) **STEPS**

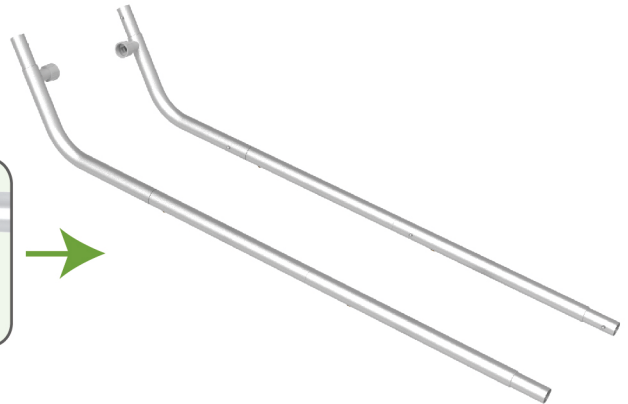
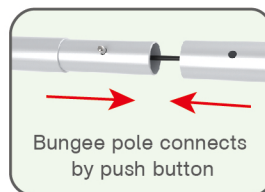
(1) Snap Tubes



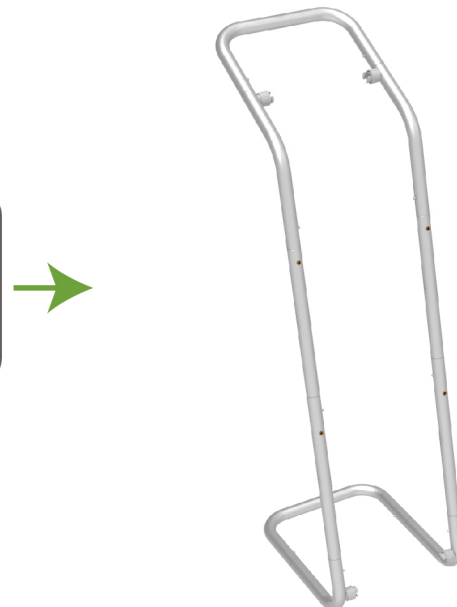
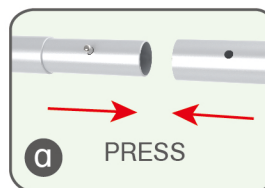
(2) Printed fabric banner

(3) Brochure rack x 2 / Screws x 4
Tablet PC holder x1**STEP 01**

To Connect the tubes according to the labellings

**STEP 02**

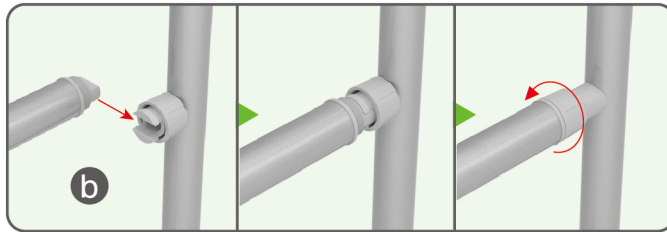
To connect 2 long side tubes by the corner pieces



STEPS

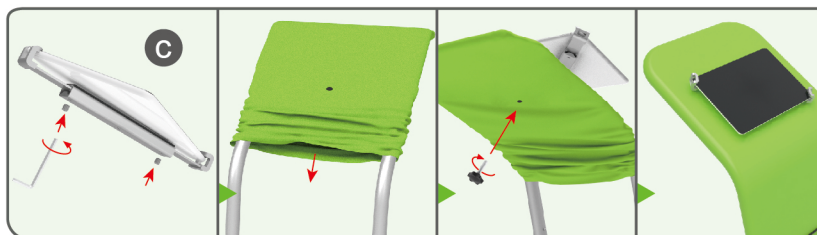
STEP 03

To install the cross bar according to labellings



STEP 04

To wrap the fabric from top to the middle of frame, then put the iPad in the holder and adjust the holder to right size and lock it by Allen Key Afterwards, install the set to the display stand.



STEPS

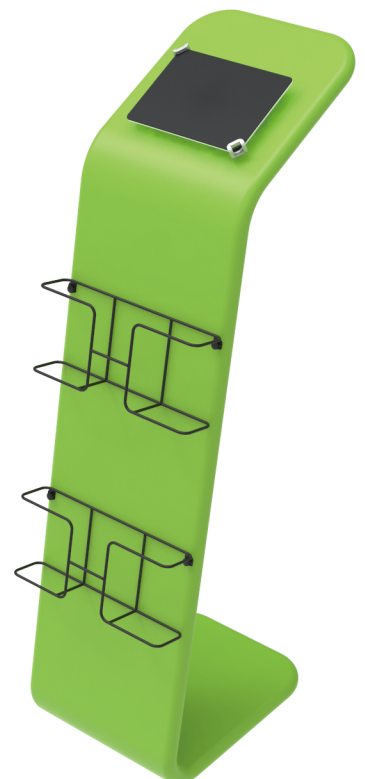
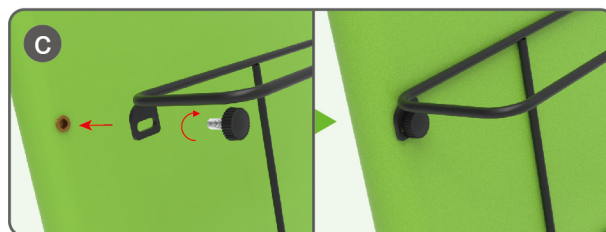
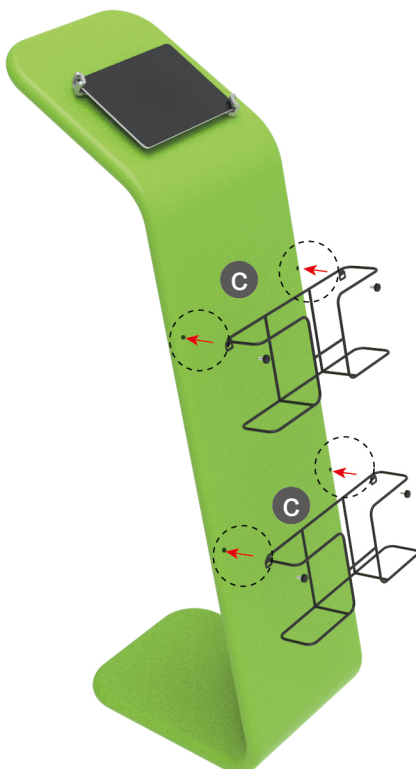
STEP 05

To pull the fabric banner to bottom and zip up.



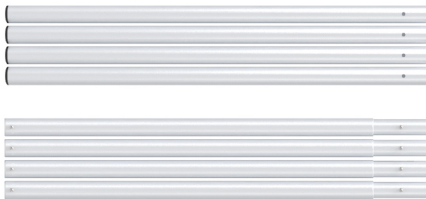
STEP 06

To Install 2 racks by screws in position

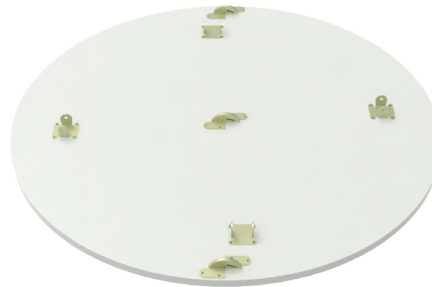


STEPS

(1) Hardware



(2) Countertop Panel



(3) Fixing Accessory

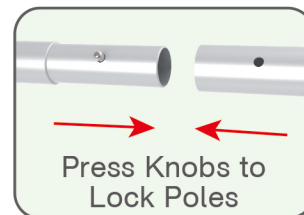


(4) Printed Graphic Fabric Banner



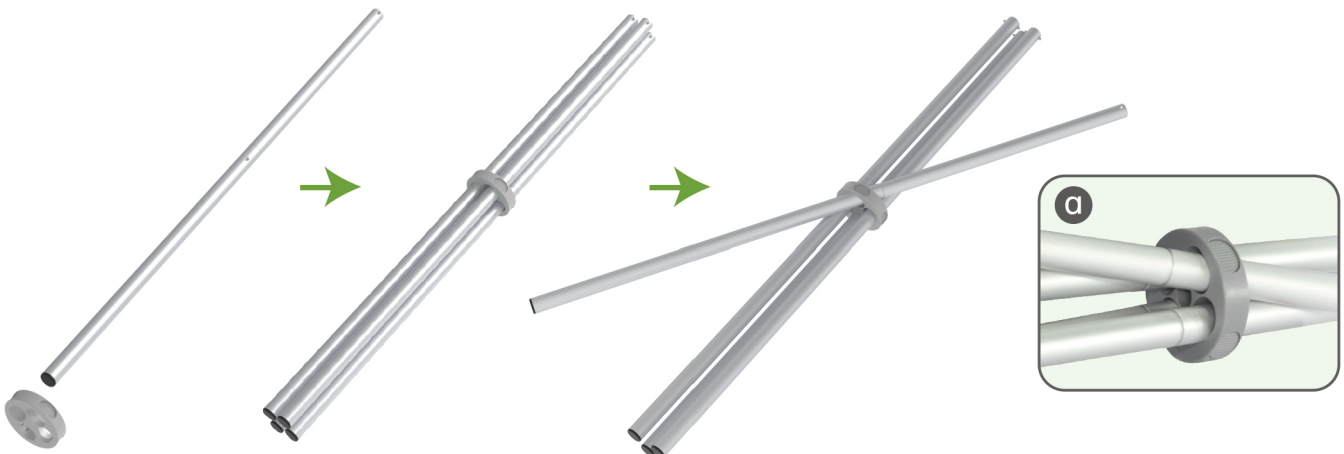
STEP 01

Connect to make long poles according to labelings.



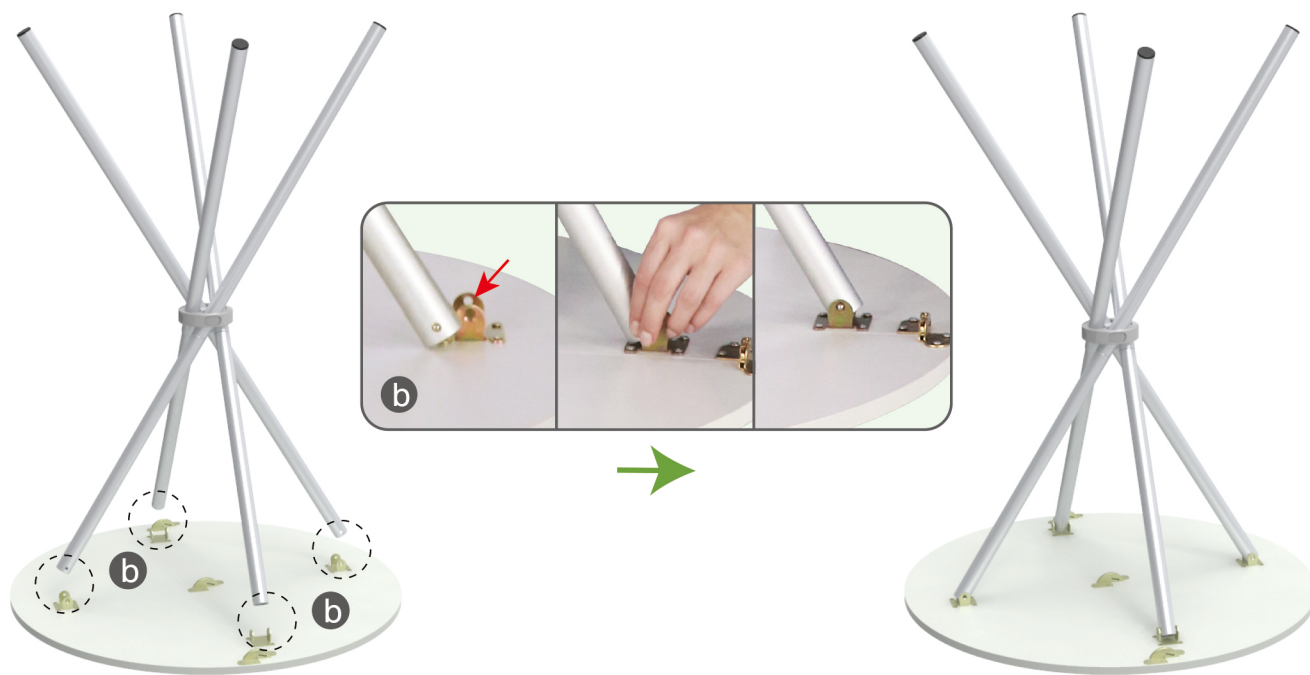
STEP 02

Insert poles into fixing accessory until you hear a 'Ding' sound to make poles' knobs clip into it & its concave parts pop out.



STEPS

STEP 03 Press poles' knobs to clip into countertop's slot.

**STEP 04**

Wrap fabric banner from top to bottom, put poles into pockets & zip up.

