

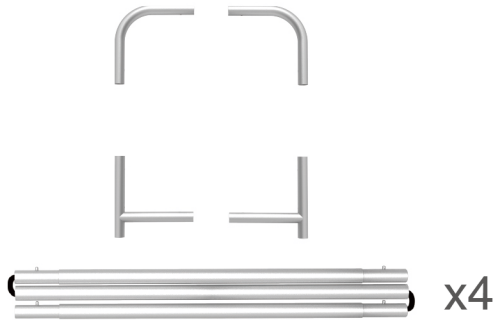
INSTRUCTION



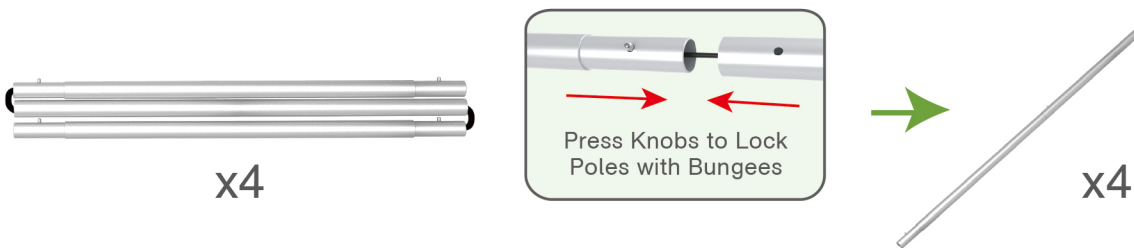
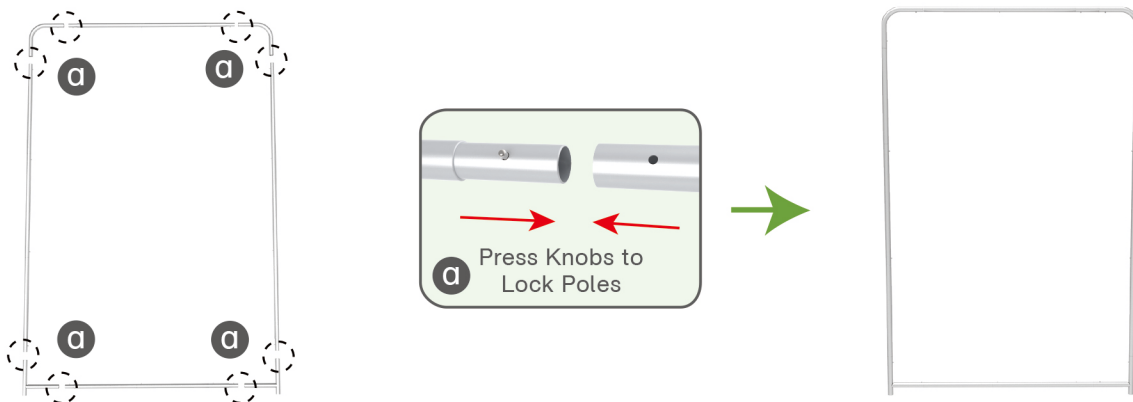
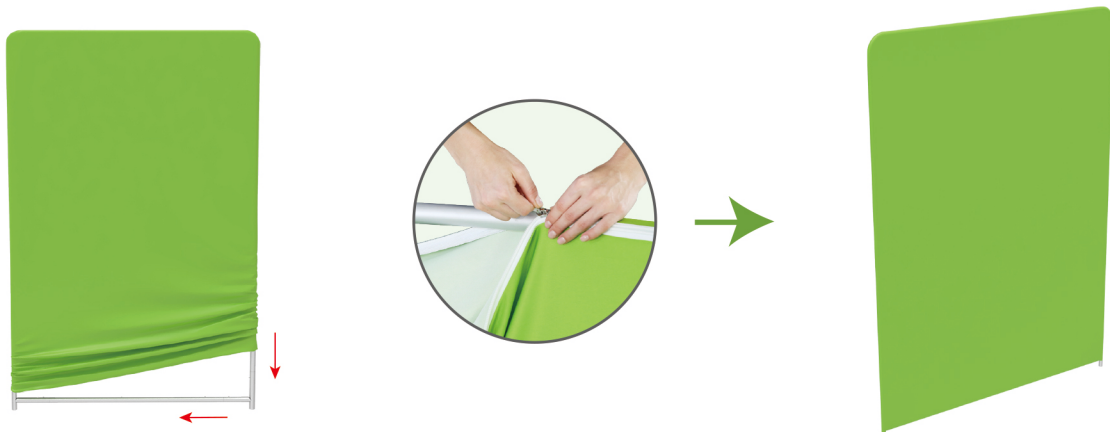
10X10FT-BOOTH-16

STEPS

(1) Hardware

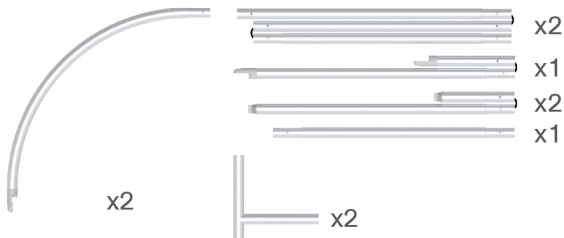


(2) Printed Graphic Fabric Banner (Optional)

**STEP 01** Connect to make long poles according to labelings.**STEP 02** Connect long poles with corner poles according to labelings.**STEP 03** Slide fabric banner on frame from top and zip up at bottom.

STEPS

(1) Hardware

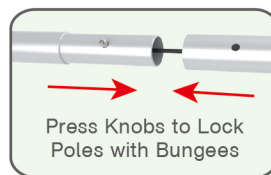


(2) Printed Graphic Fabric Banner (Optional)



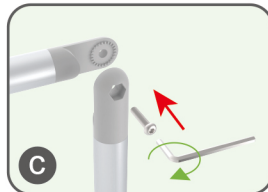
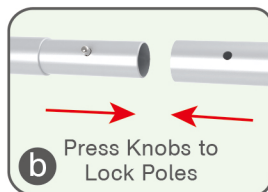
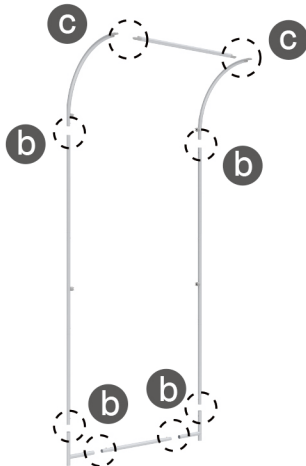
STEP 01

Connect to make long poles according to labelings.



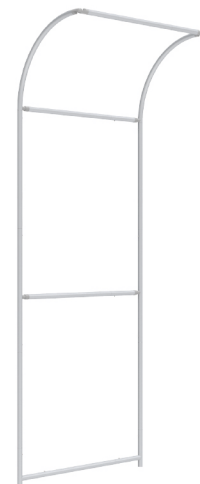
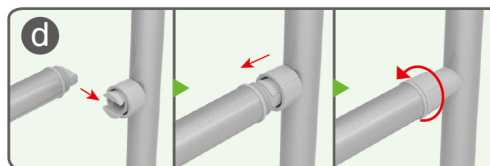
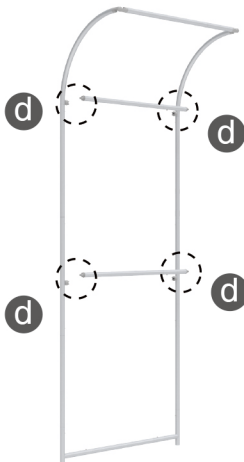
STEP 02

Connect long poles with corner poles according to labelings.



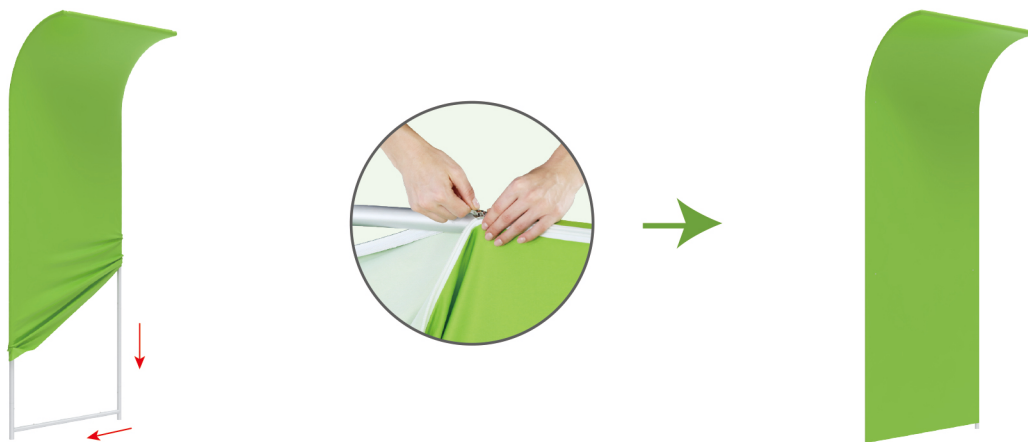
STEP 03

Install cross bars in position.



STEPS

STEP 04 Slide fabric banner on frame from top and zip up at bottom.



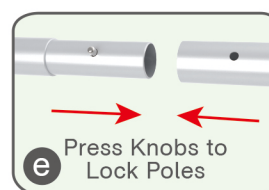
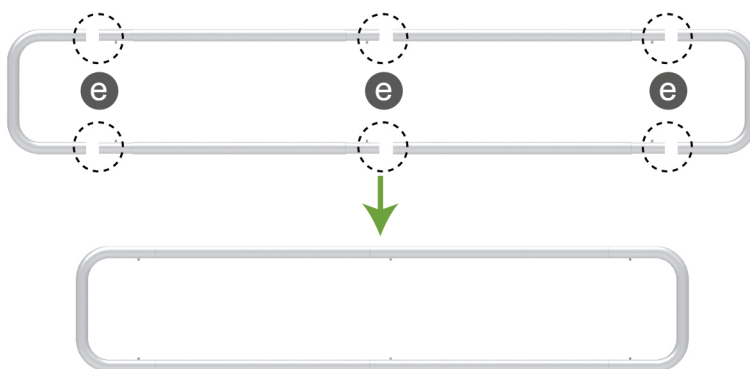
(1) Hardware



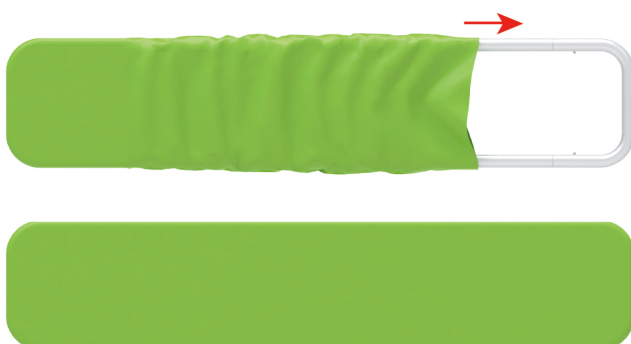
(2) Printed Graphic Fabric Banner (Optional)



STEP 01 Connect poles according to labelings.



STEP 02 Slide fabric banner on frame from left and zip up at right.

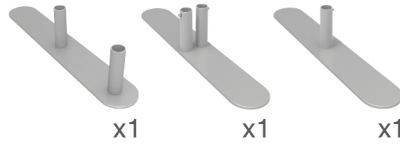


STEPS

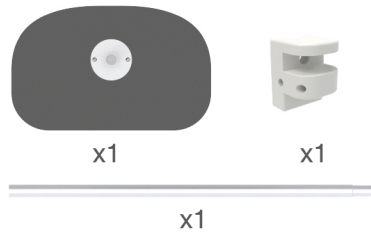
Booth Set Assembly



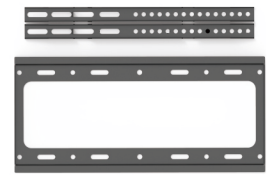
(1) Base



(3) MDF Board Table



(4) C-Shaped Clip & TV Mount

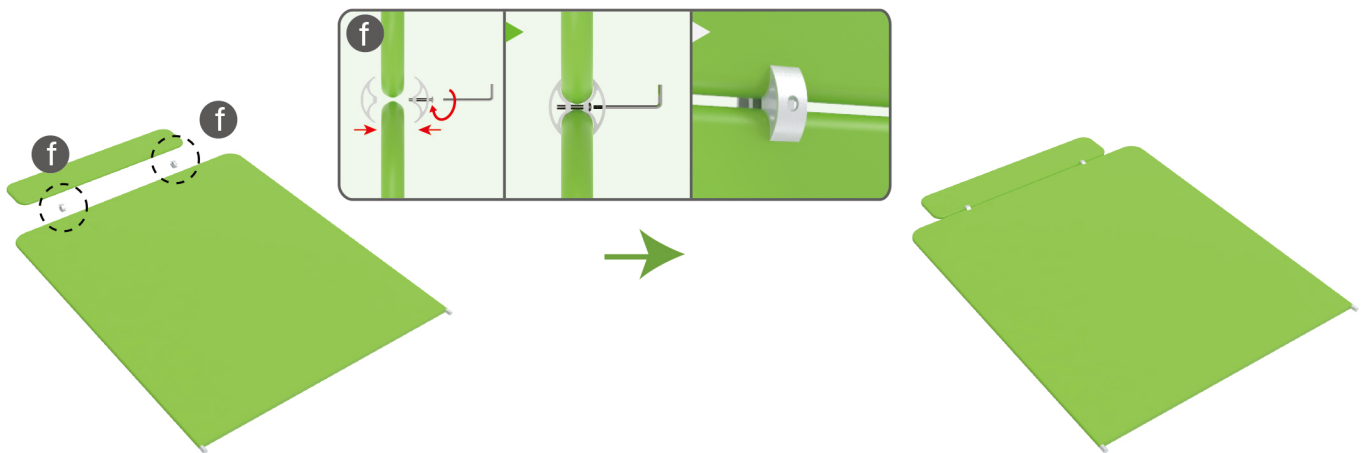


(2) LED Light & Clip



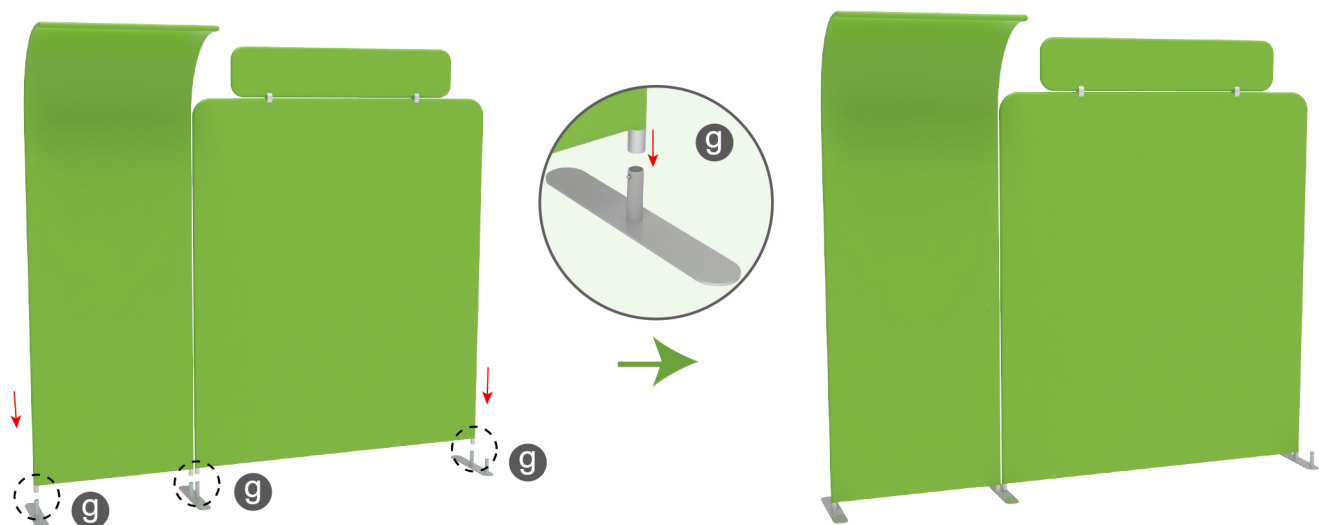
STEP 01

Interconnect display stands with C-shaped clips.

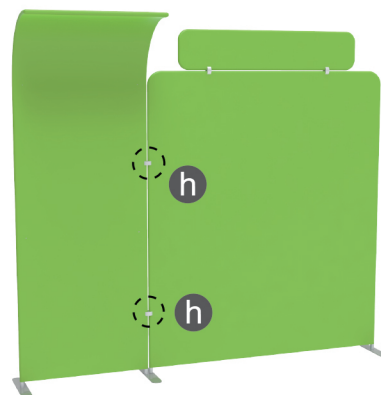
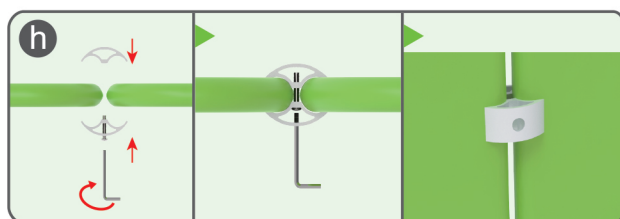


STEP 02

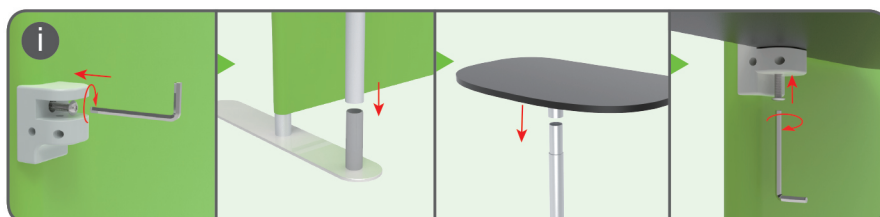
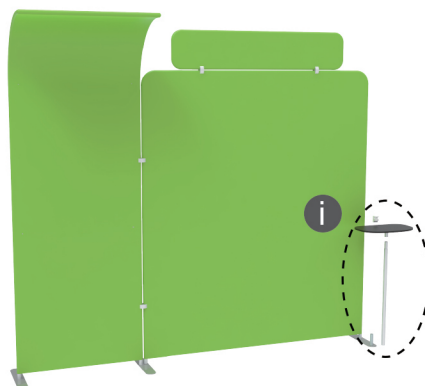
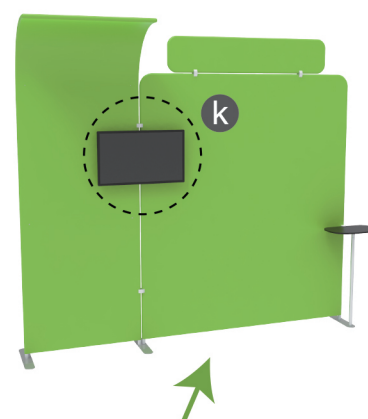
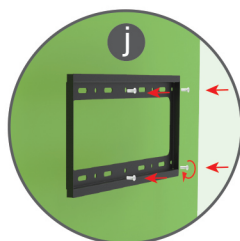
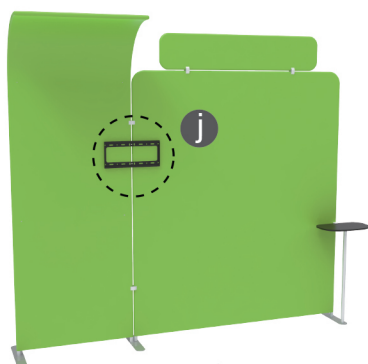
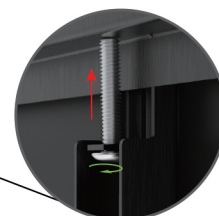
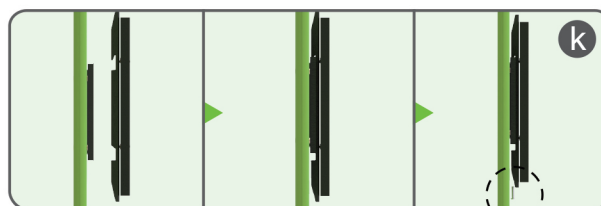
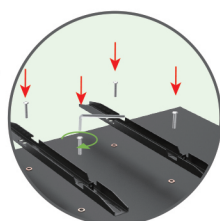
Insert display stands onto feet by pressing their knobs.



STEPS

STEP 02 Interconnect display stands with C-shaped clips.**STEP 03**

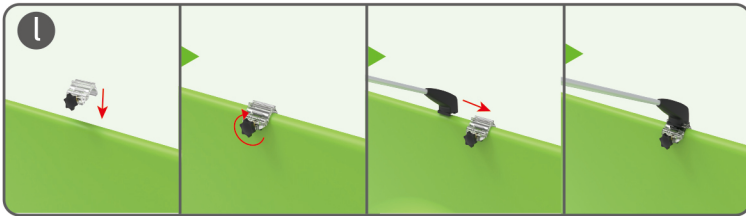
Insert pole into base, screw clamp with hex wrench, place MDF board onto pole & insert into clamp with screw.

**STEP 04** Screw TV mount with hex wrench.TV (Excluded,
Demo Only)

STEPS

STEP 05

Screw light clips at top of display stands, slide lights onto them and adjust their direction.



10X10FT-BOOTH-16

STEPS

(1) Durable Plastic Hard Case, Aluminum Support Poles

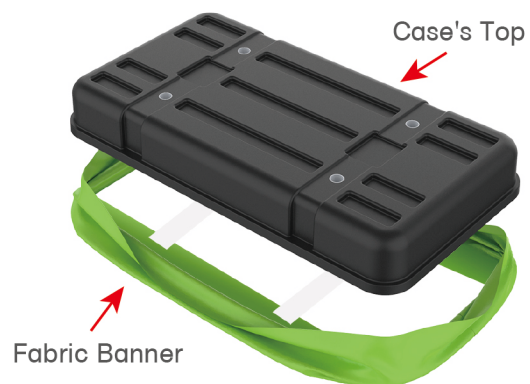


(2) Printed Graphic Fabric Banner



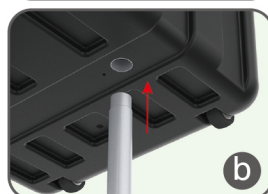
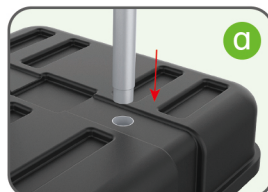
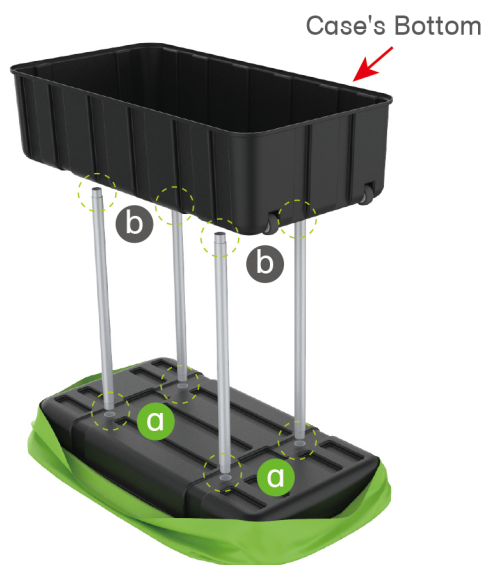
STEP 01

Put hard case's top into fabric banner.



STEP 02

Insert support poles into hard case's top & bottom.



STEPS

STEP 04

Wrap fabric banner from bottom to top & twist it to be smooth, lay hard case's intermediate panel on podium's top.

