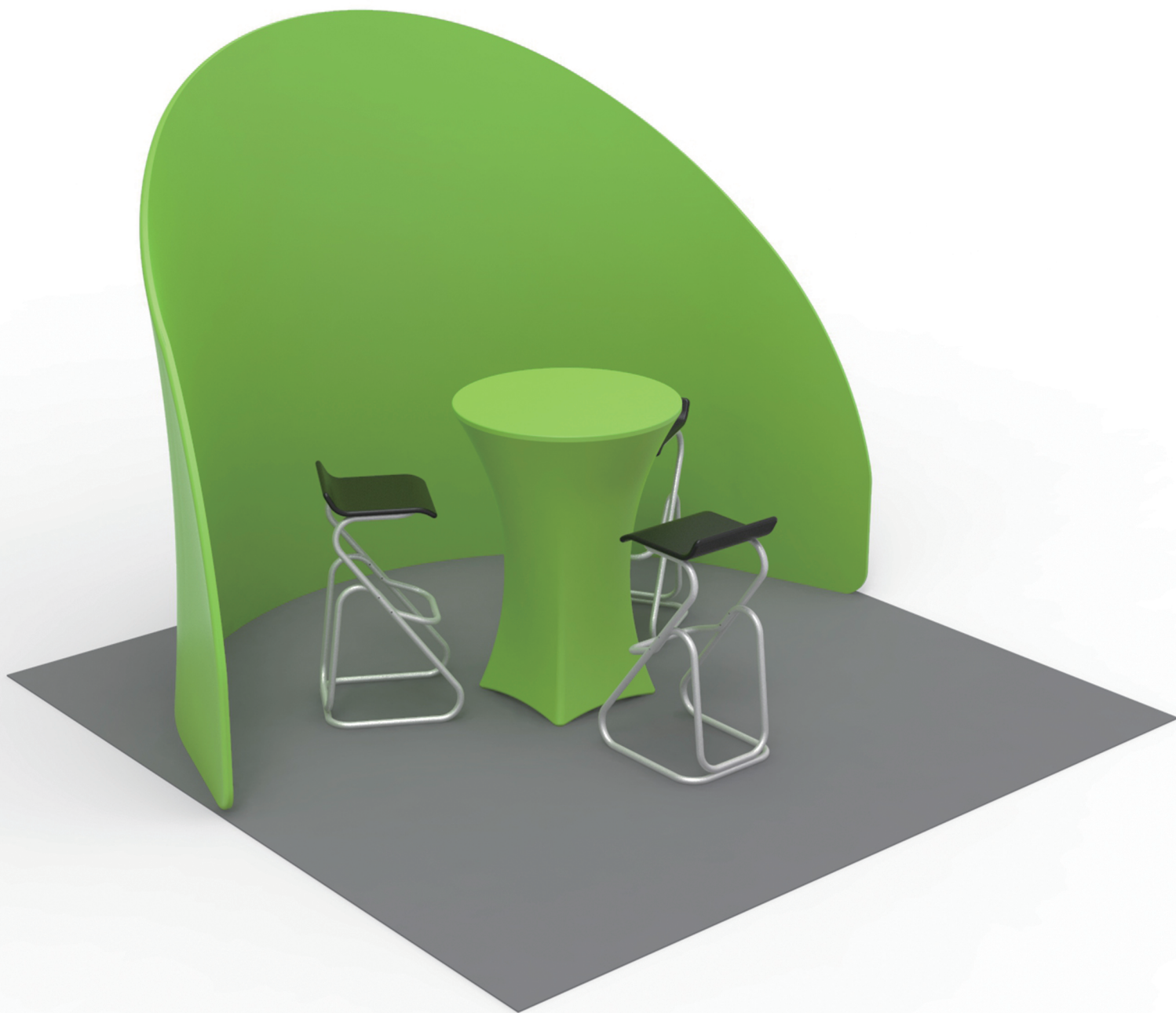


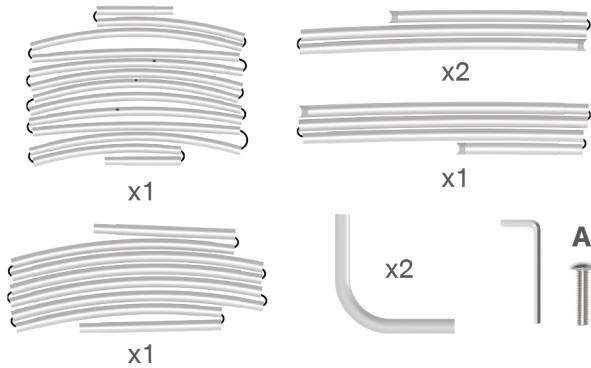
# INSTRUCTION



**10X10FT-BOOTH-10**

## STEPS

## (1) Hardware

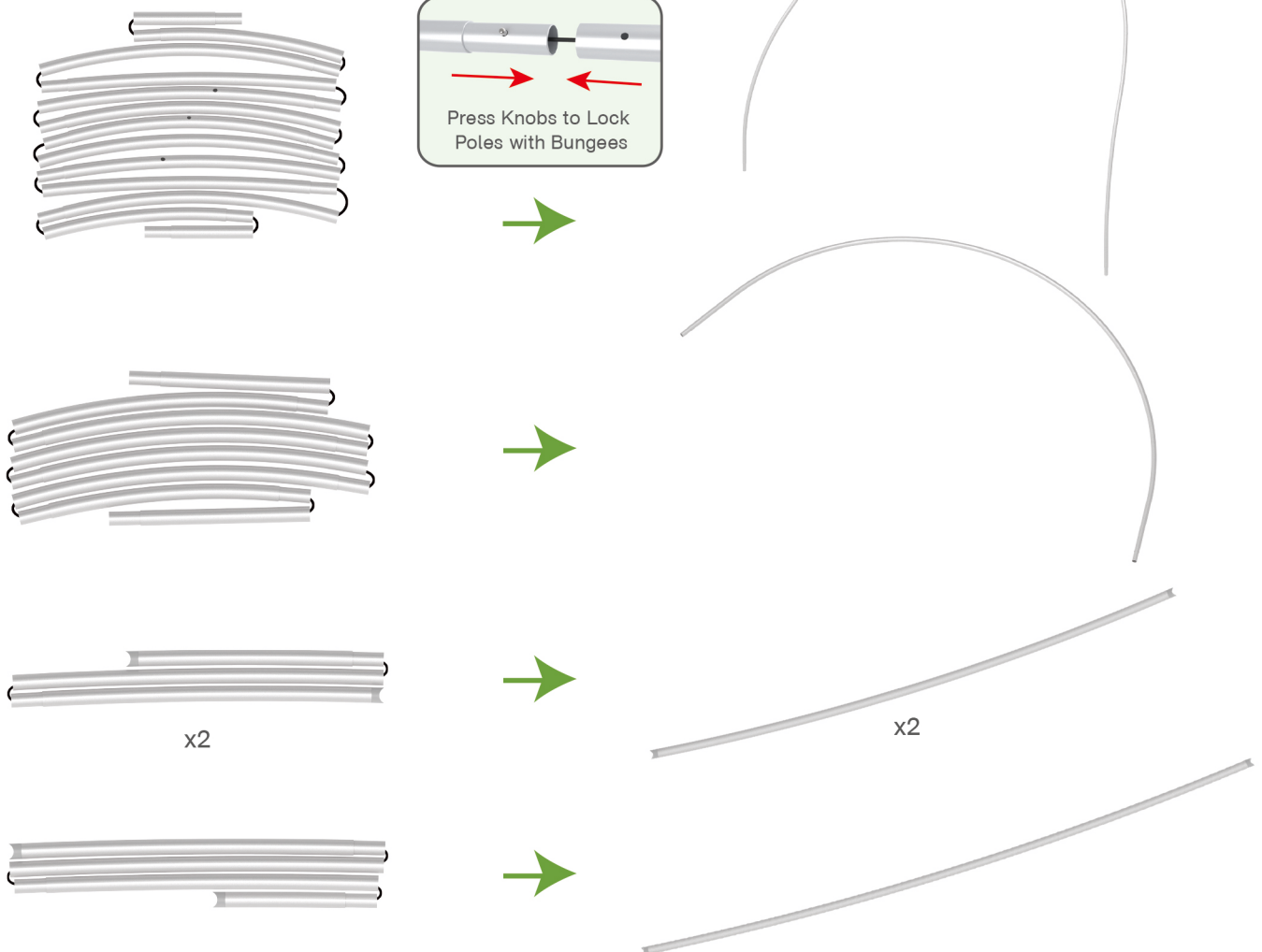


## (2) Printed Graphic Fabric Banner (Optional)



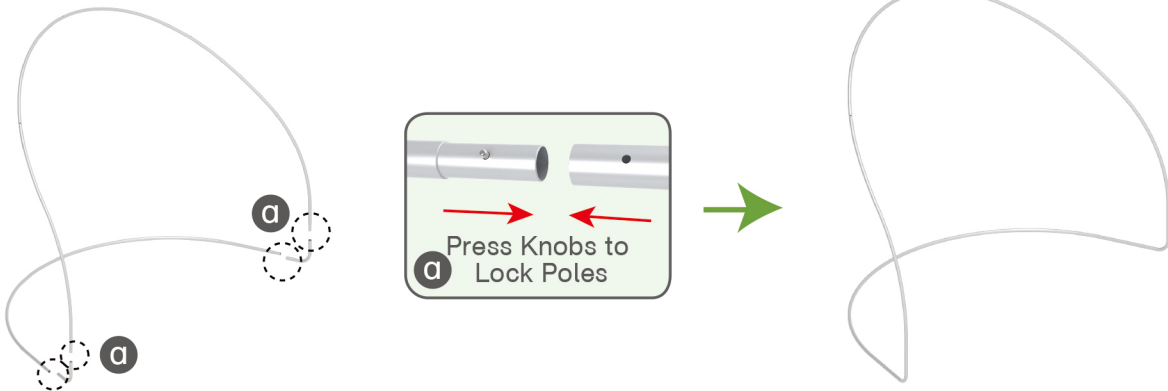
## STEP 01

Connect to make long poles according to labelings.

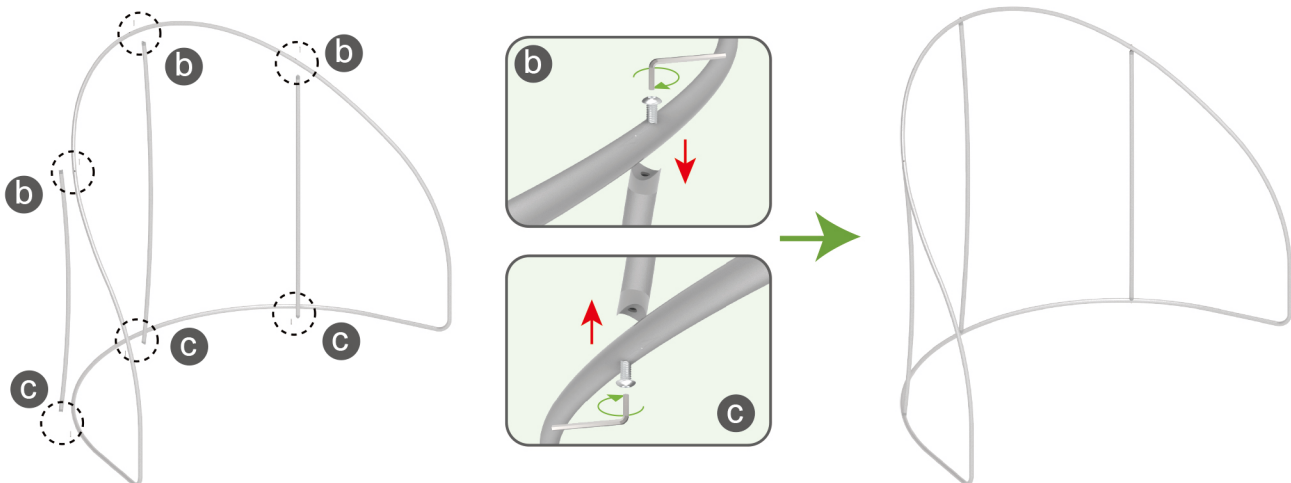


**STEPS****STEP 02**

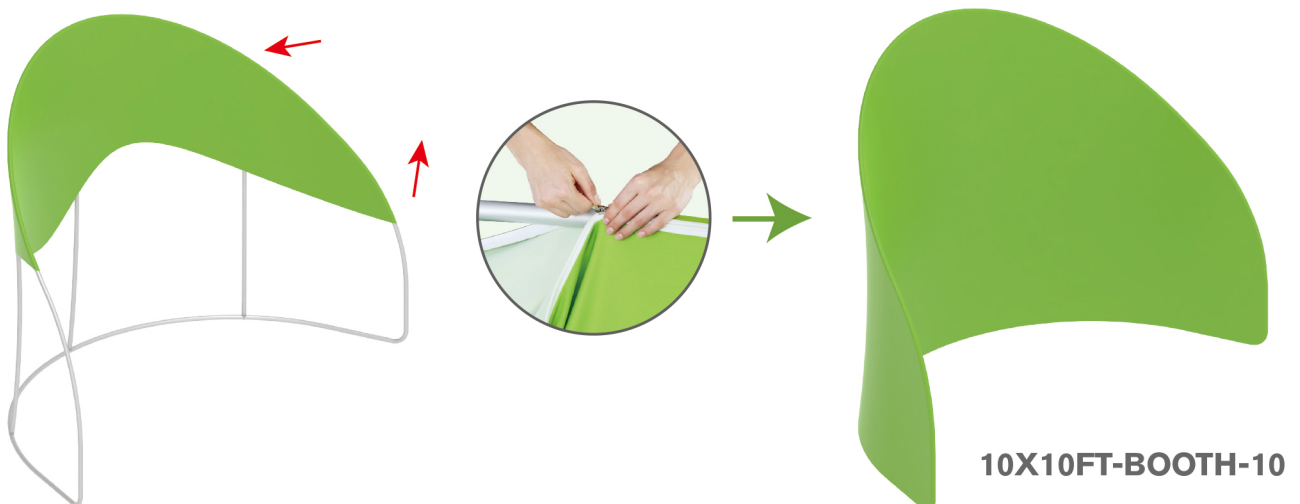
Connect long poles with corner poles according to labelings.

**STEP 03**

Connect support poles onto frame.

**STEP 04**

Wrap enclosure frame with fabric banner & zip up at bottom.



## STEPS

## (1) Hardware



## (2) Countertop Panel



## (3) Fixing Accessory

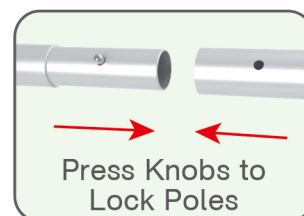


## (4) Printed Graphic Fabric Banner



## STEP 01

Connect to make long poles according to labelings.



## STEP 02

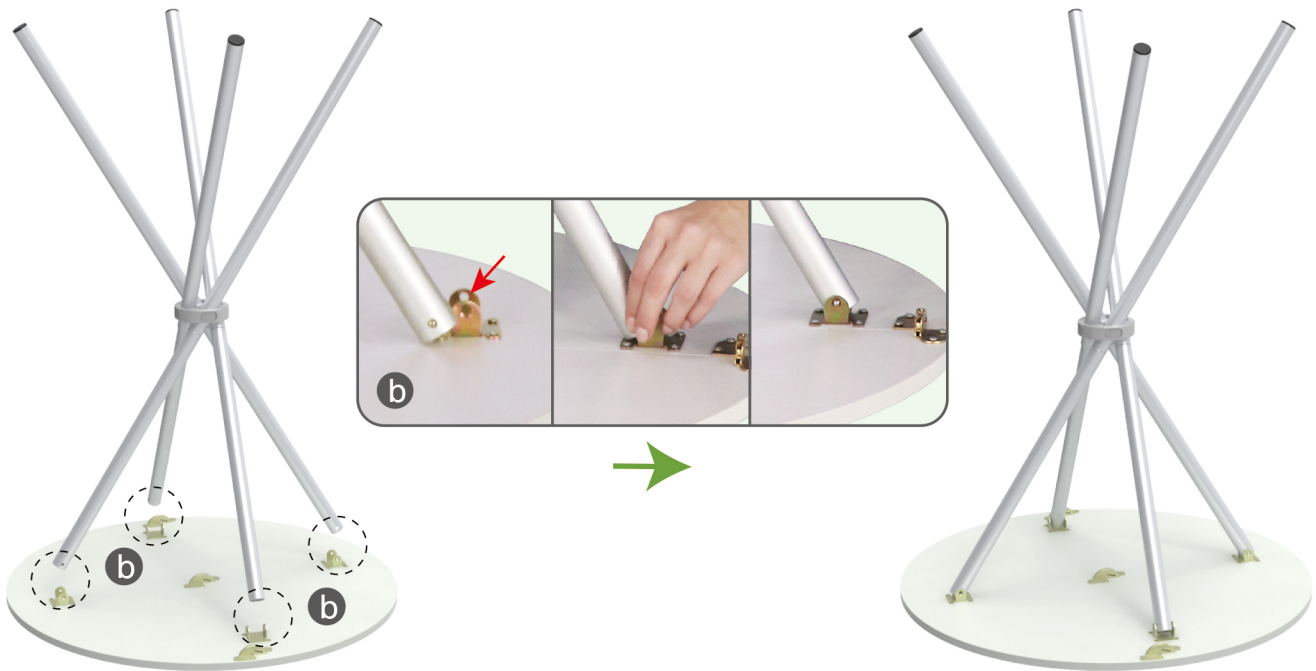
Insert poles into fixing accessory until you hear a 'Ding' sound to make poles' knobs clip into it & its concave parts pop out.





## STEPS

**STEP 03** Press poles' knobs to clip into countertop's slot.

**STEP 04**

Wrap fabric banner from top to bottom, put poles into pockets & zip up.

