

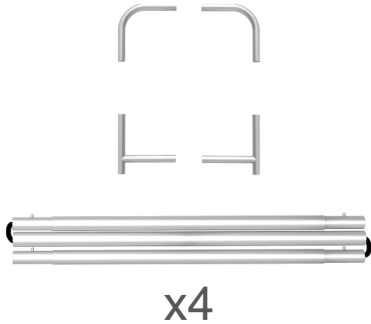
# INSTRUCTION



**10X10FT-BOOTH-04**

## STEPS

(1) Hardware

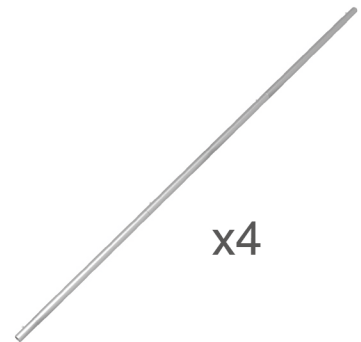
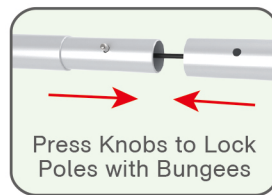
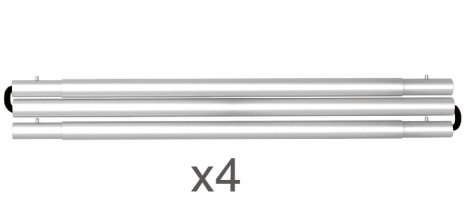


(2) Printed Graphic Fabric Banner



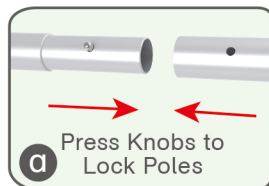
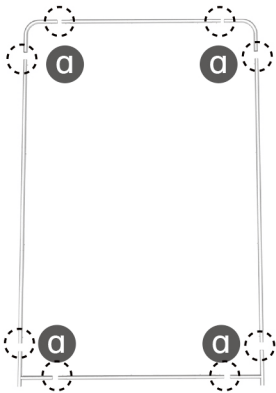
## STEP 01

Connect to make long poles according to labelings.



## STEP 02

Connect long poles with corner poles according to labelings.



## STEP 03

Slide fabric banner on frame from top and zip up at bottom.



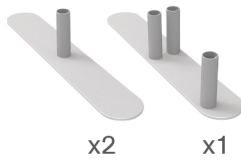
Same Steps for Other Display Stands

## STEPS

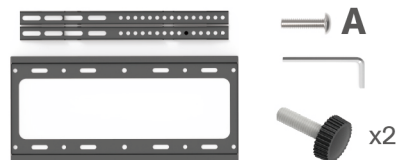
## Booth Set Assembly



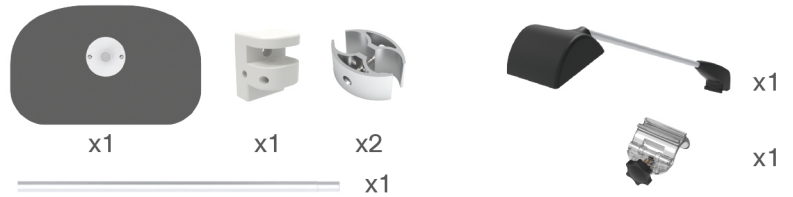
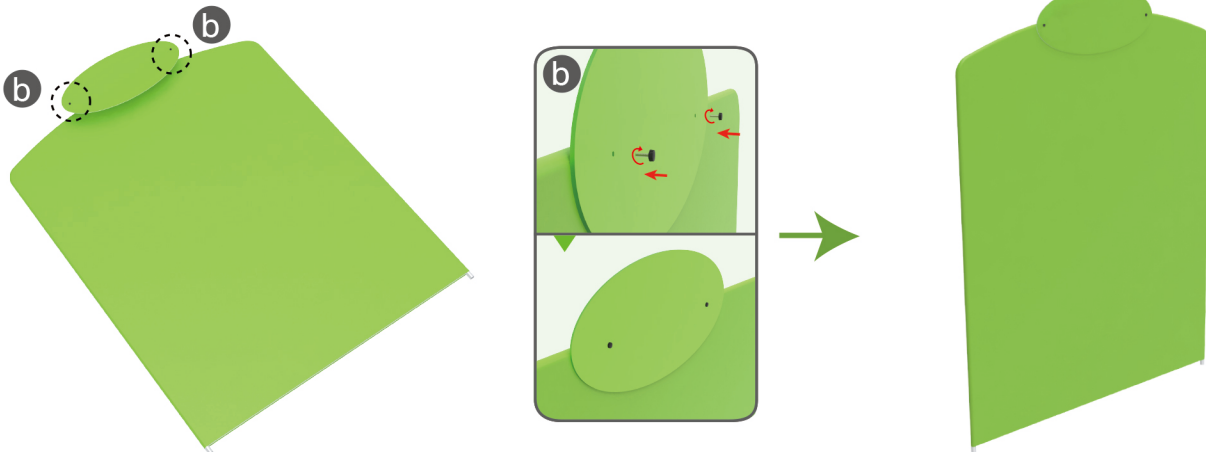
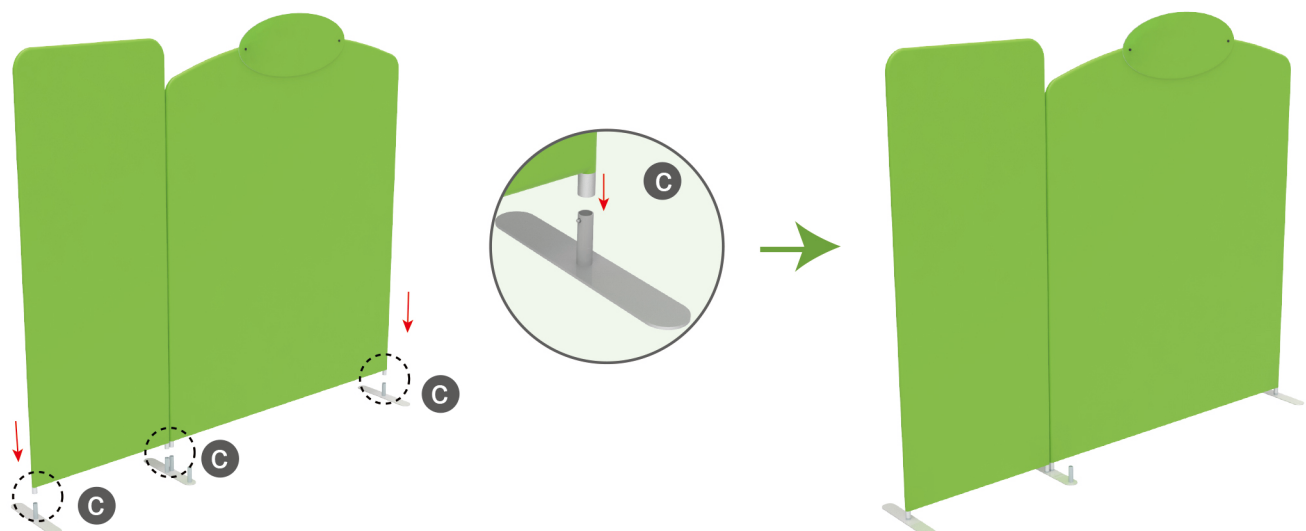
(1) Base



(2) TV Mount &amp; Screw

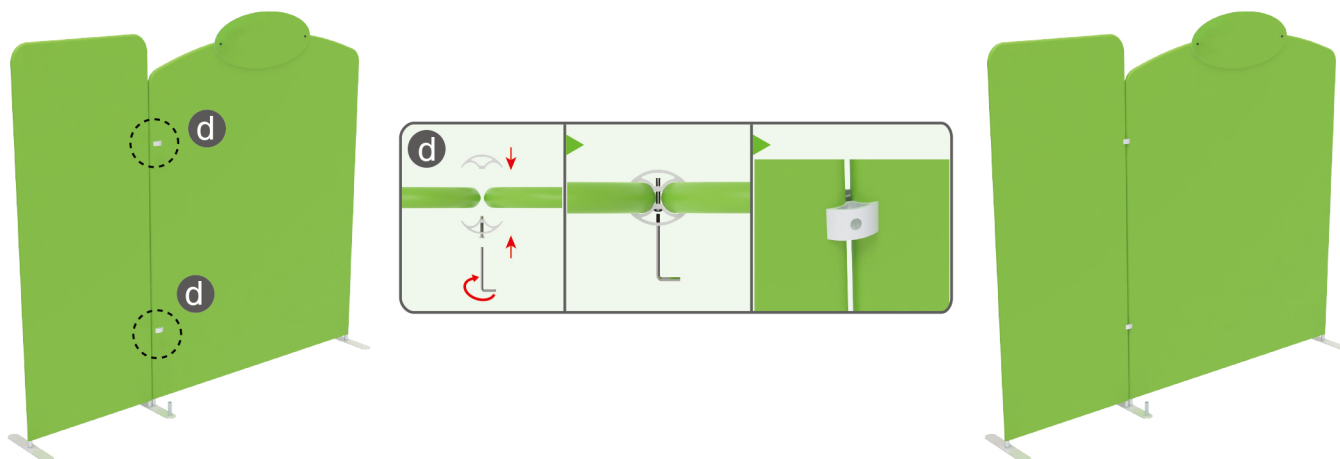


(3) 180° C-Shaped Clip &amp; MDF Board Table (4) LED Light &amp; Clip

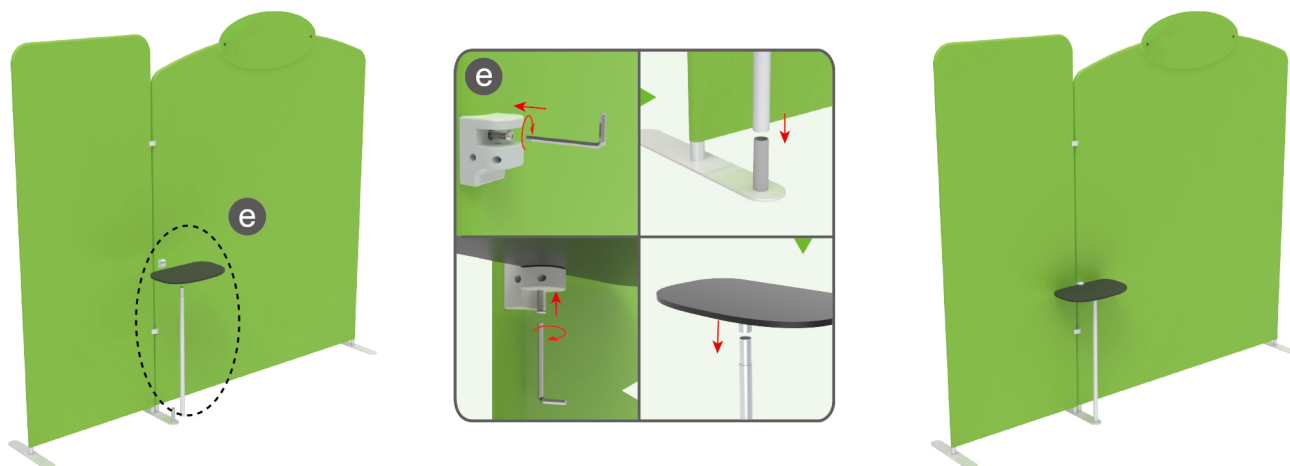
**STEP 01** Screw header onto display stand with thumb screws.**STEP 02** Insert display stands onto feet by pressing their knobs.

## STEPS

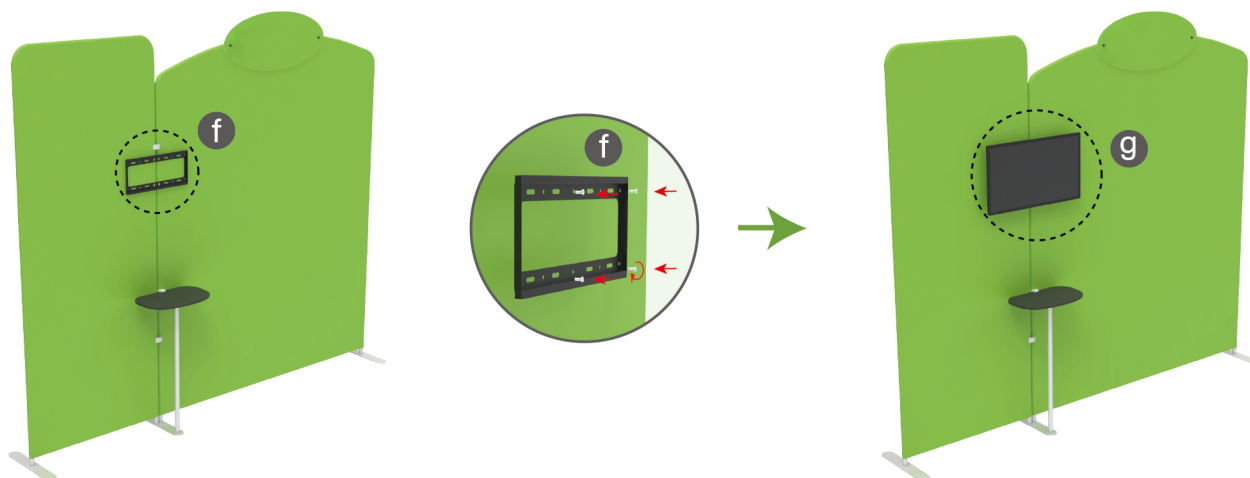
**STEP 03** Interconnect display stands with C-shaped clips.

**STEP 04**

Insert pole into base, screw clamp with hex wrench, place MDF board onto pole & insert into clamp with screw.

**STEP 05**

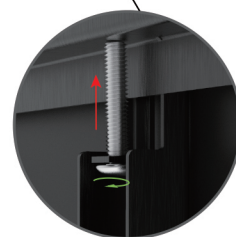
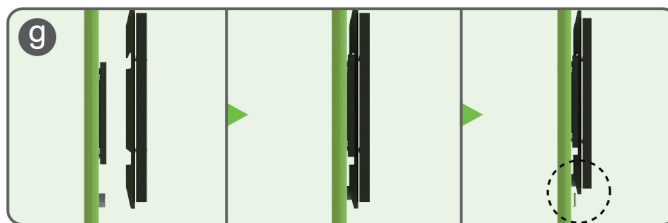
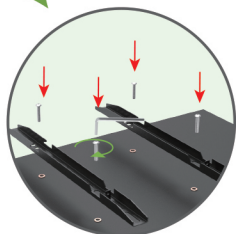
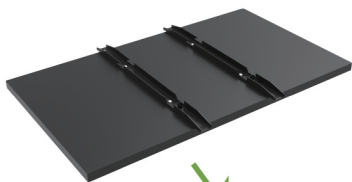
Screw TV mount with hex wrench.





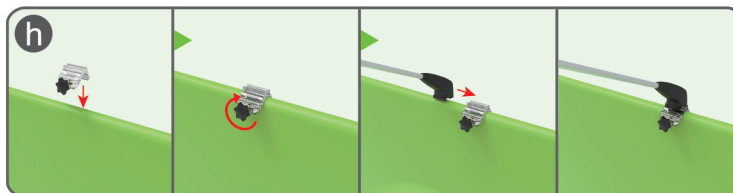
## STEPS

TV (Excluded, Demo Only)



## STEP 06

Screw light clips at top of display stands, slide lights onto them and adjust their direction.



10X10FT-BOOTH-04

## STEPS

(1) Durable Plastic Hard Case, Aluminum Support Poles

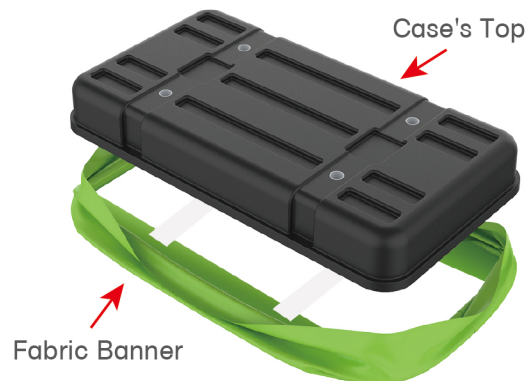


(2) Printed Graphic Fabric Banner



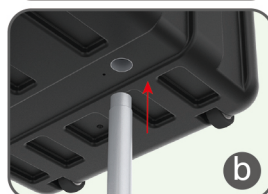
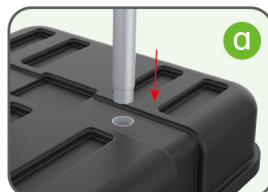
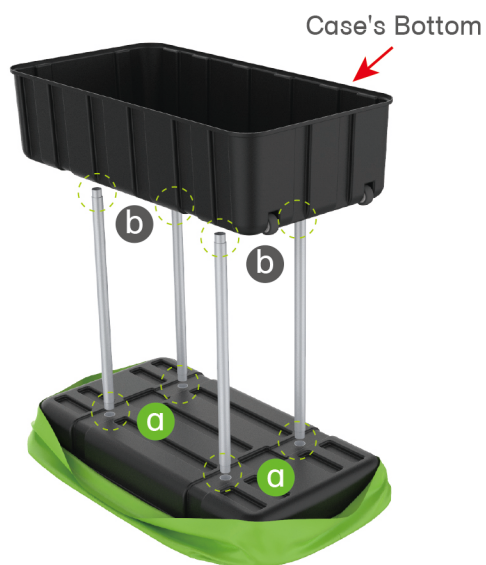
## STEP 01

Put hard case's top into fabric banner.



## STEP 02

Insert support poles into hard case's top &amp; bottom.



## STEPS

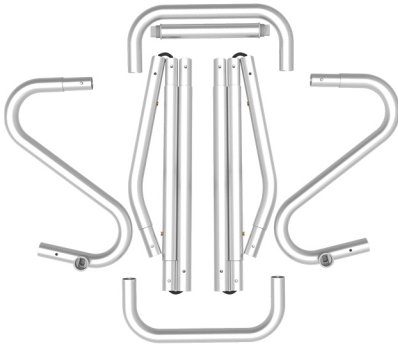
## STEP 04

Wrap fabric banner from bottom to top & twist it to be smooth, lay hard case's intermediate panel on podium's top.

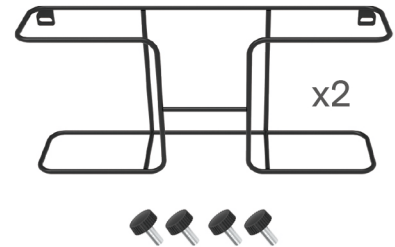


## STEPS

(1) Snap Tubes

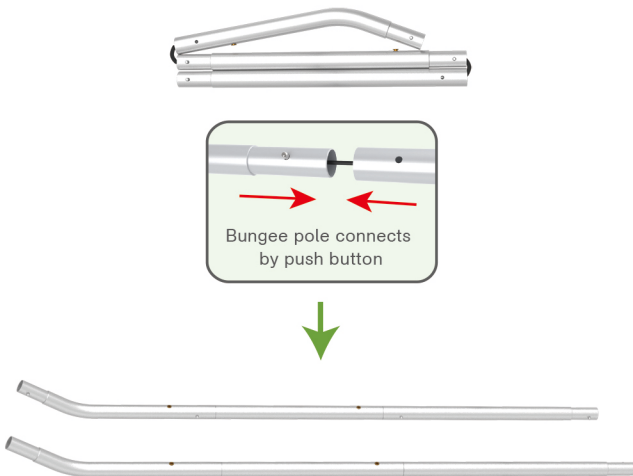


(2) Printed fabric banner

(3) Brochure rack x 2  
Screws x 4

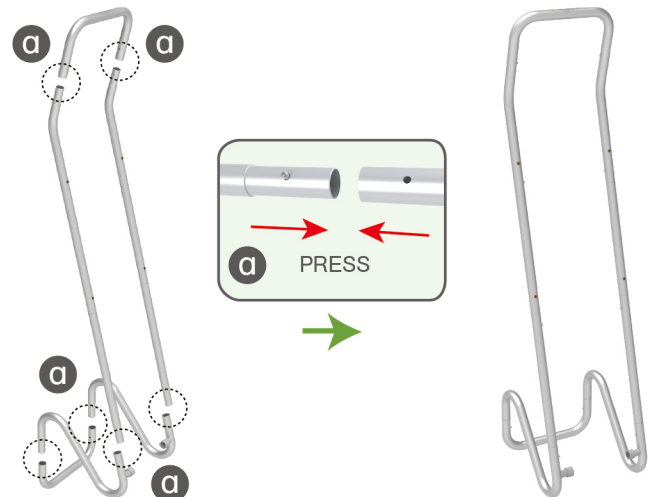
## STEP 01

To Connect the tubes according to the labellings

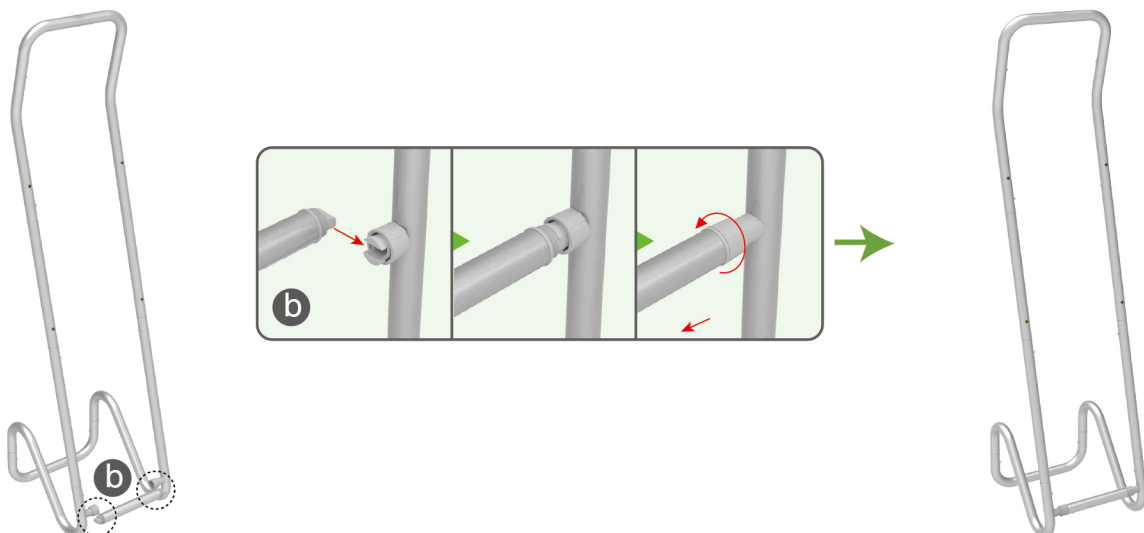


## STEP 02

To connect 2 long side tubes by the corner pieces



## STEP 03 To install the cross bar according to labellings

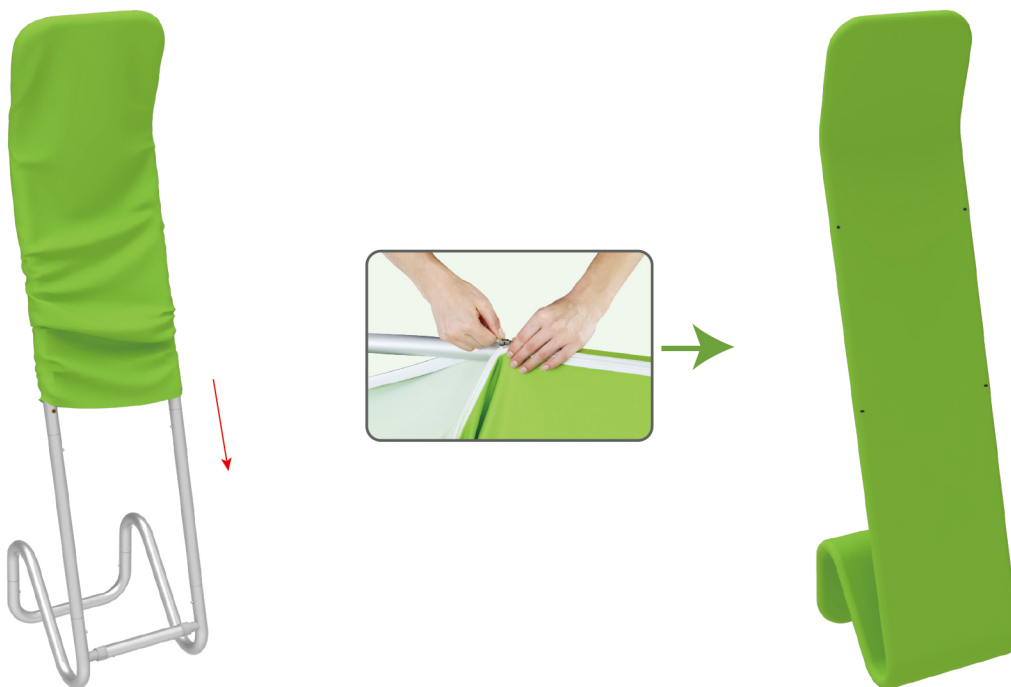




## STEPS

## STEP 04

To Wrap up the fabric banner from top to bottom and zip up.



## STEP 05

To install 2 racks by screws in position

