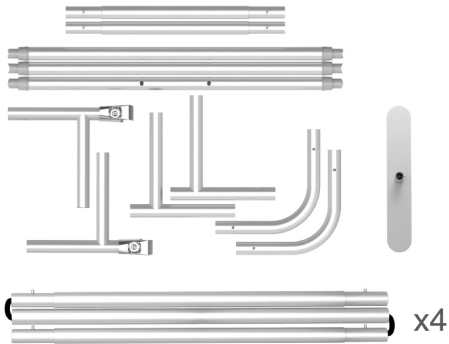
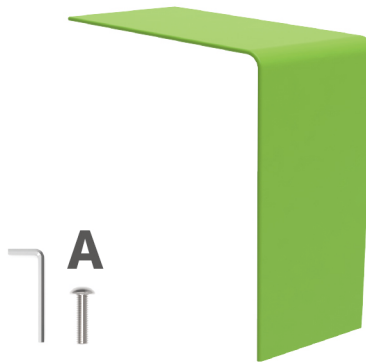


## STEPS

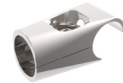
(1) Hardware



(2) Printed Graphic Fabric Banner (Optional)

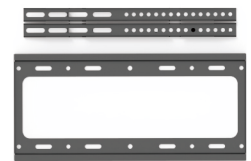


(3) Arm Clip



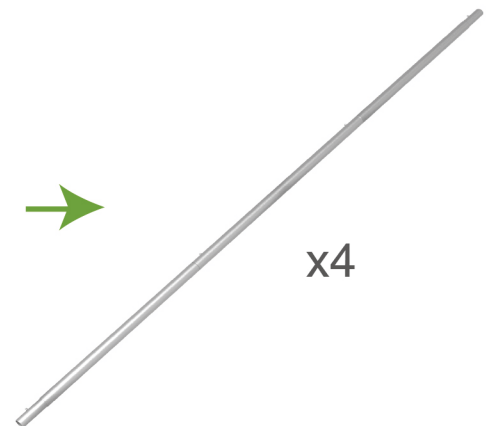
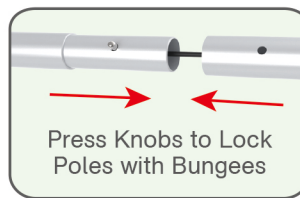
x2

(4) TV Mount



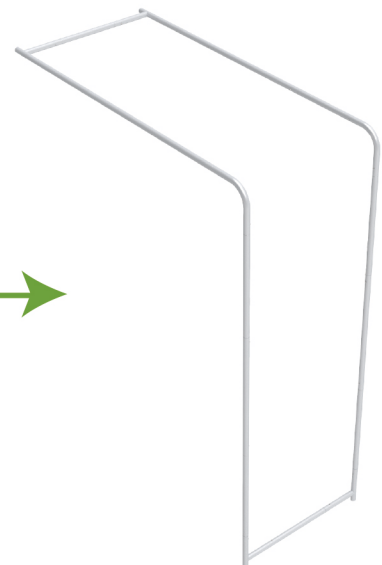
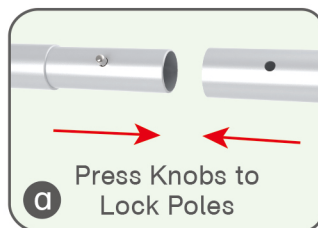
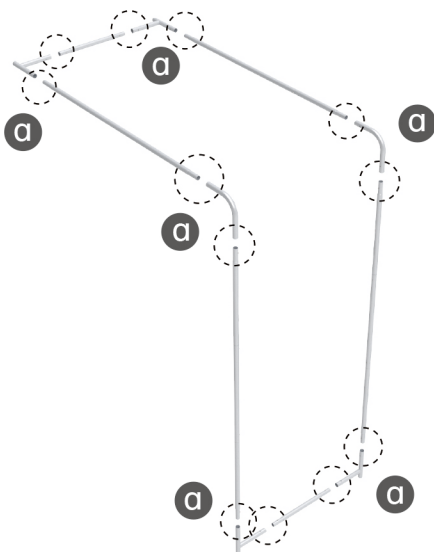
## STEP 01

Connect to make long poles according to labelings.

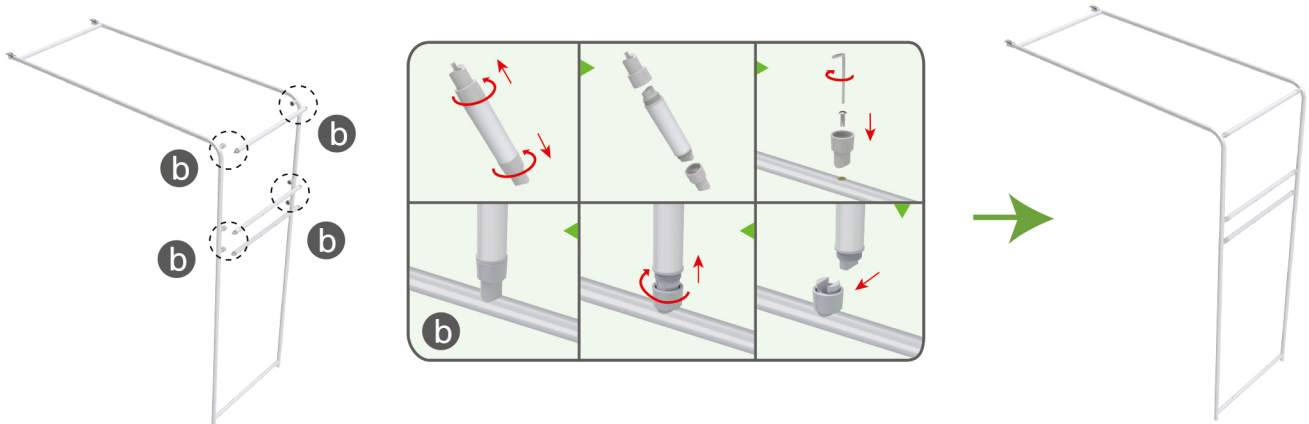
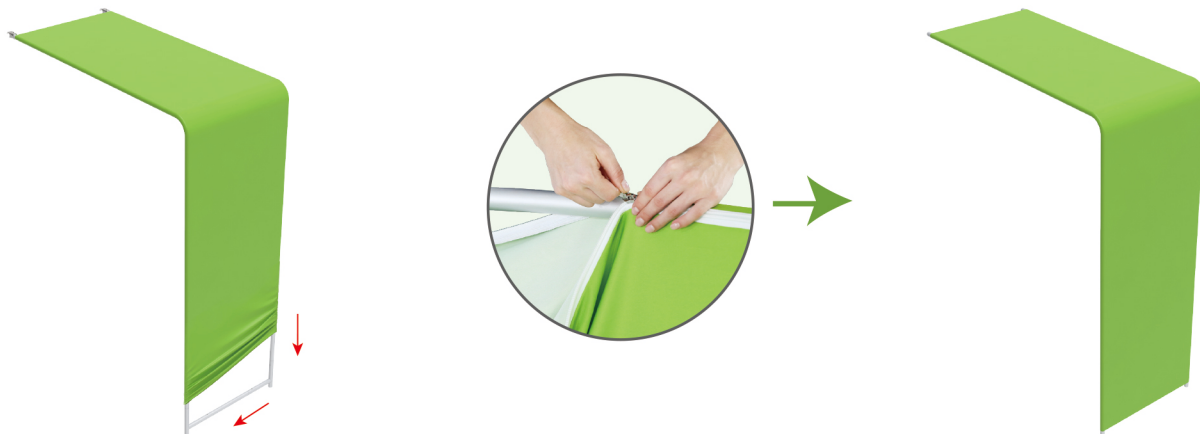
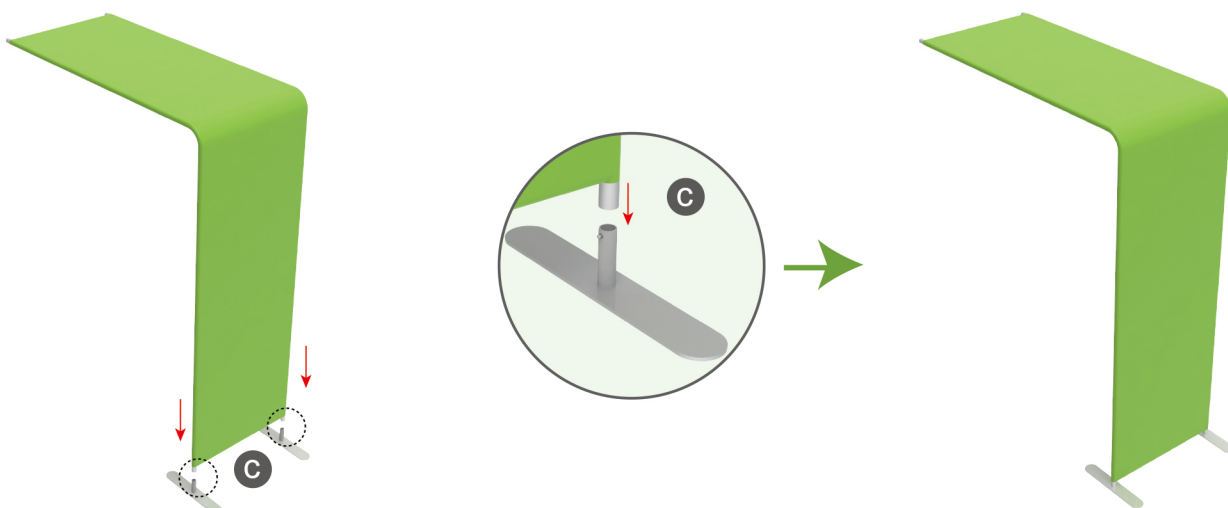


## STEP 02

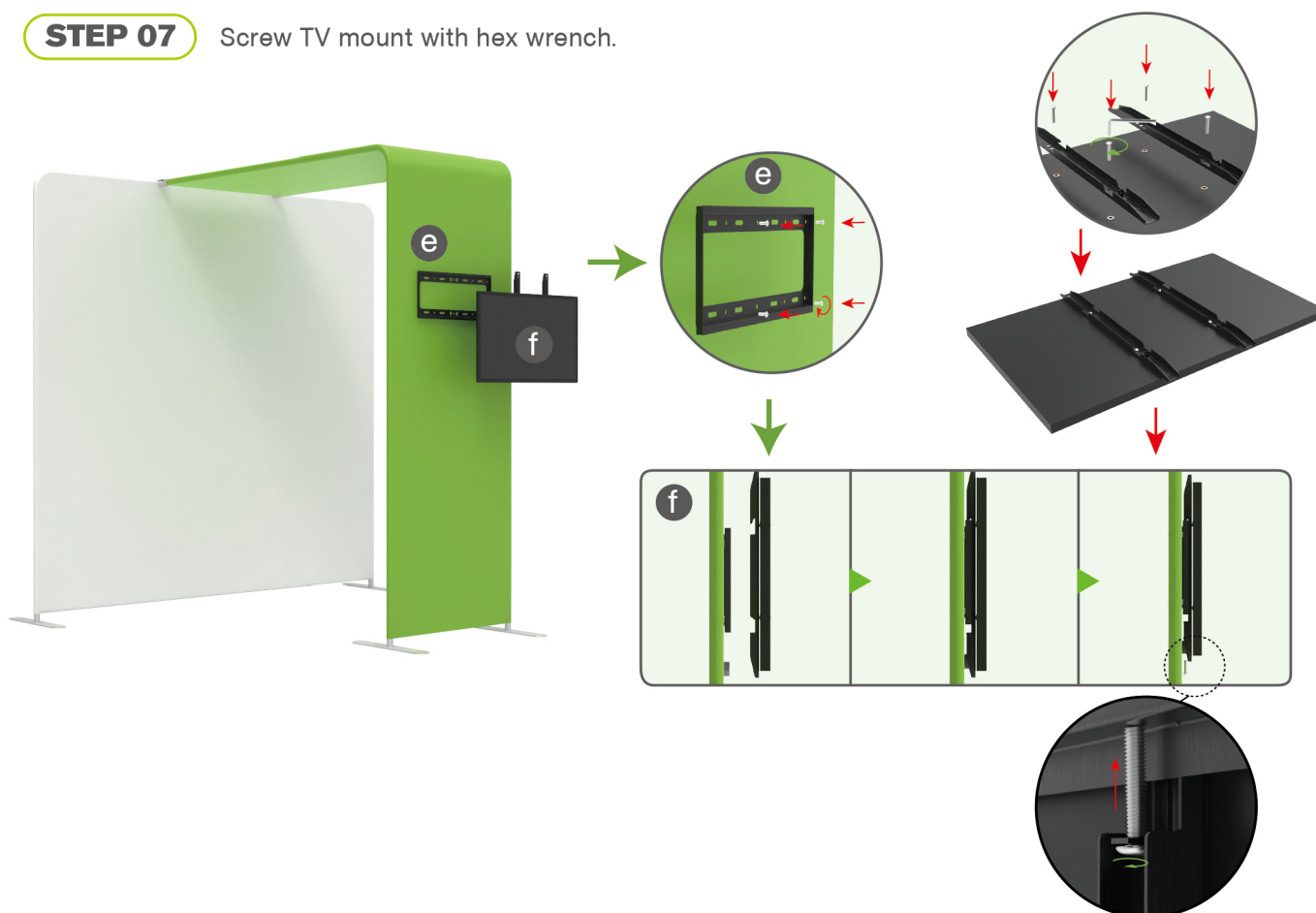
Connect long poles with corner poles according to labelings.



## STEPS

**STEP 03** Connect support poles onto frame.**STEP 04** Slide fabric banner on frame from top and zip up at bottom.**STEP 05** Insert display stands onto feet by pressing their knobs.

## STEPS

**STEP 06** Connect display stands with arm clips.**STEP 07** Screw TV mount with hex wrench.

**STEPS**