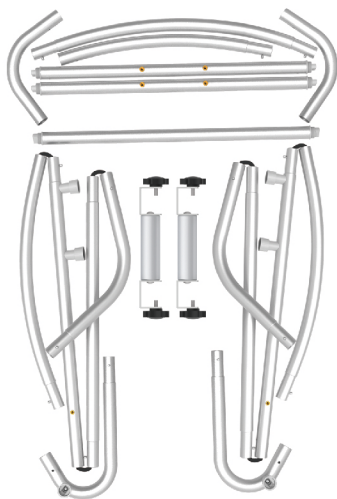


★ One Tool (Hex Wrench) **STEPS**

(1) Hardware



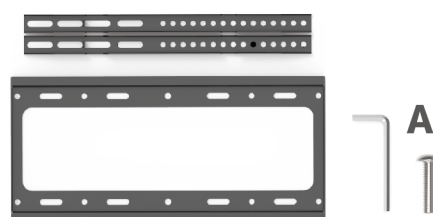
(2) Fabric banner



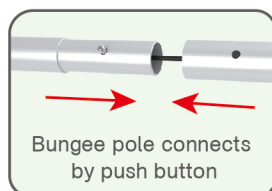
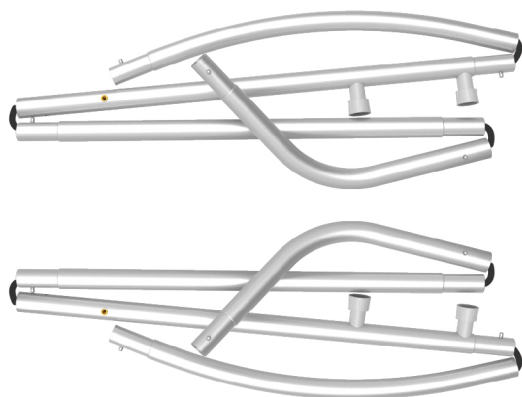
(3) shelves and bracket set



(4) TV mount and screw bag

**STEP 01**

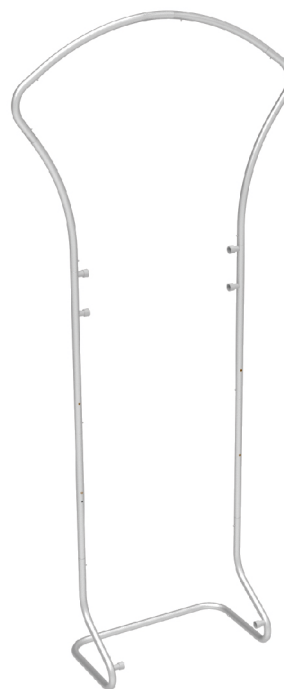
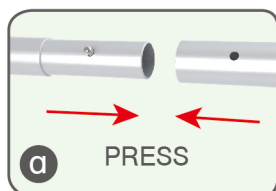
To connect the poles according to the labellings



## STEPS

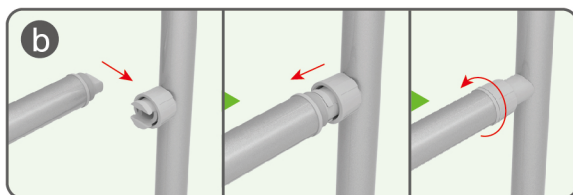
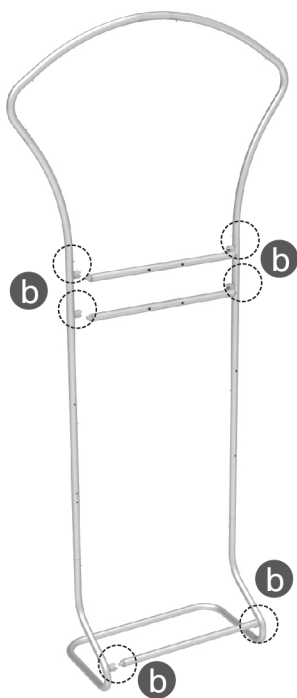
## STEP 02

To connect the poles according to the labellings



## STEP 03

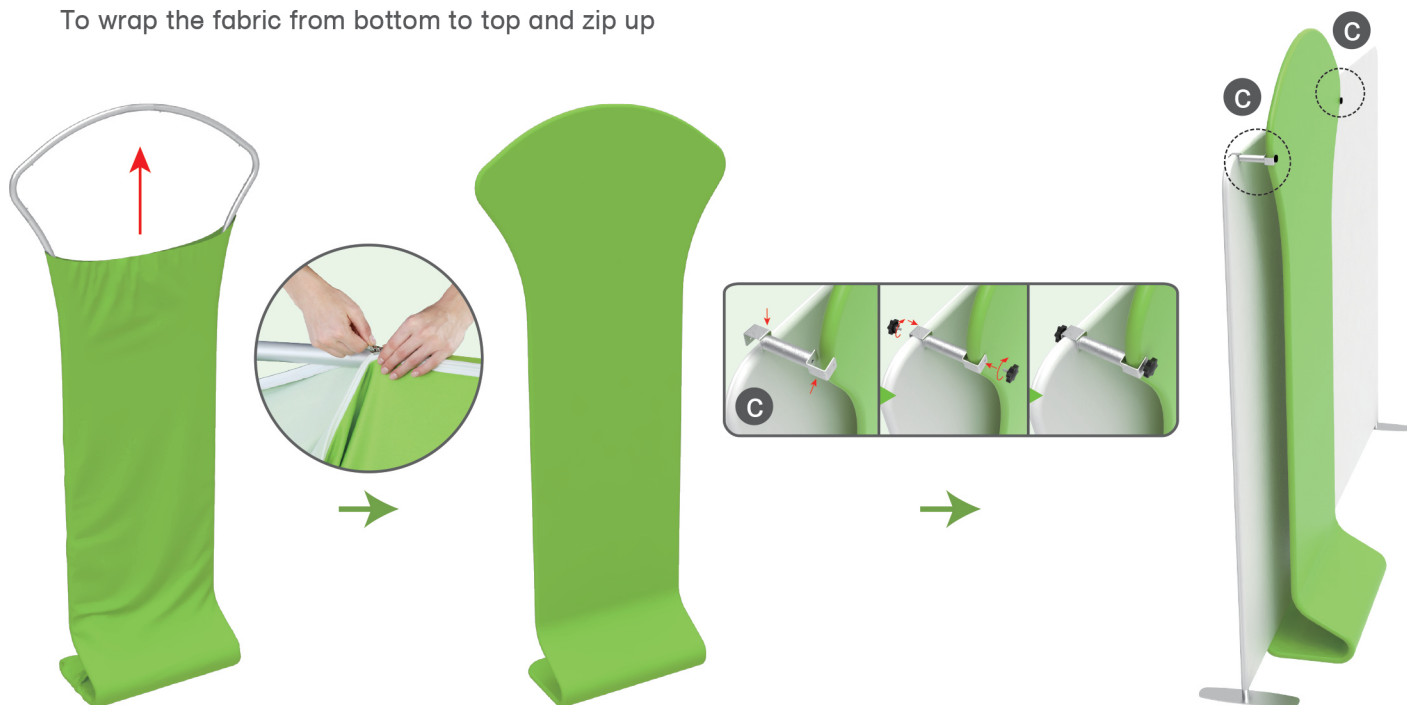
To install cross bars in position



## STEPS

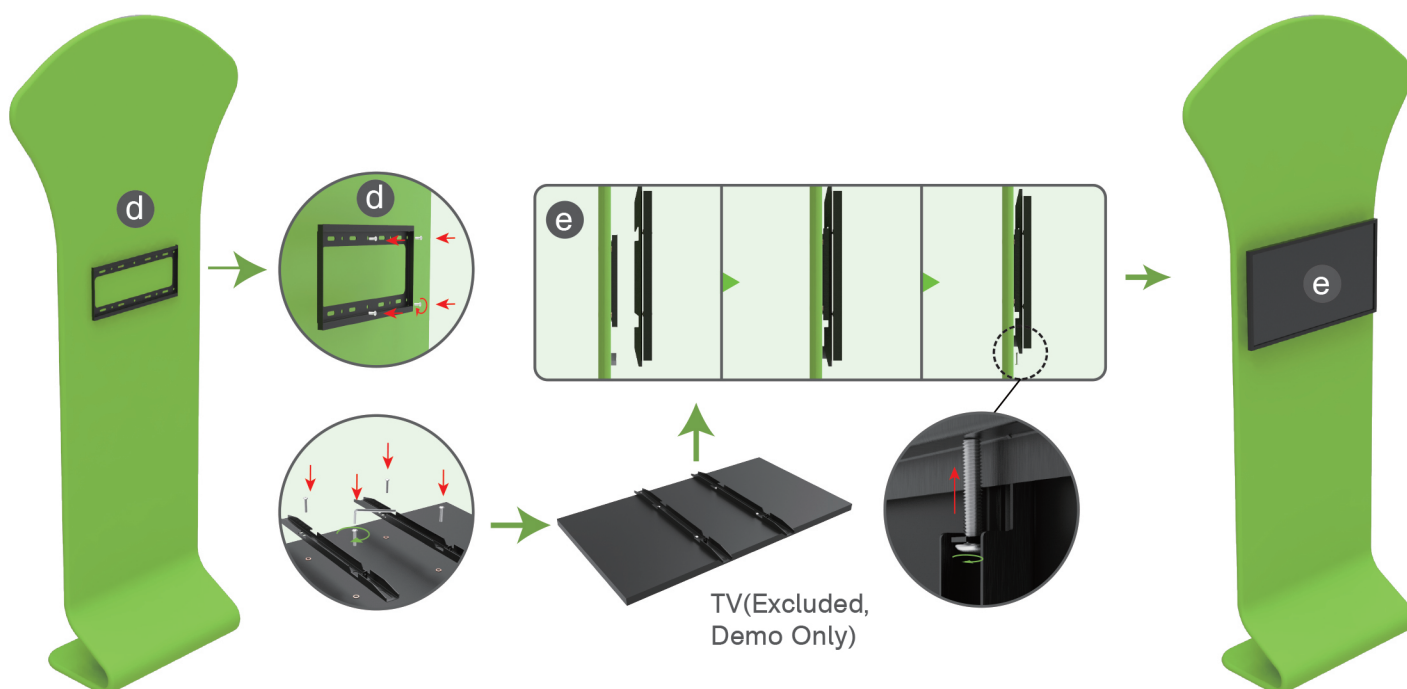
## STEP 04

To wrap the fabric from bottom to top and zip up



## STEP 05

To install the TV mount onto the stand and put the support brackets at the back of TV screen, then hang whole set of TV screen onto the TV mount.



## STEPS

## STEP 06

To install the shelves brackets in position then put shelves in place

