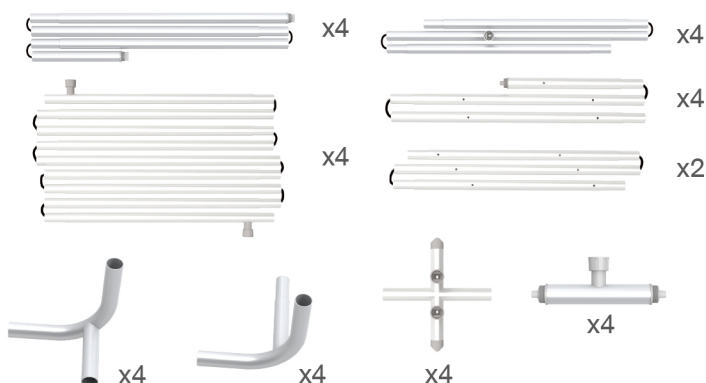


STEPS

(1) Hardware



(2) Printed Graphic Fabric Banner (Optional)

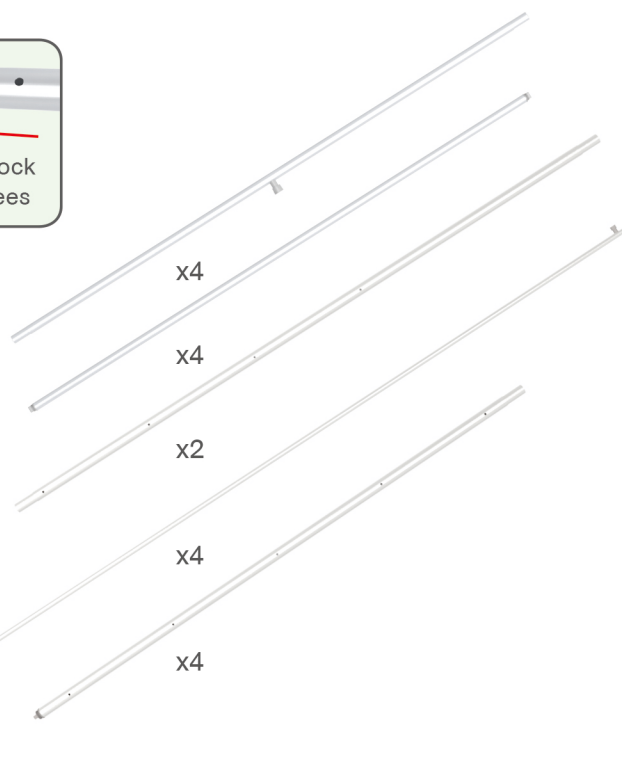
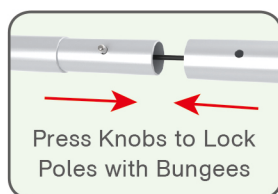
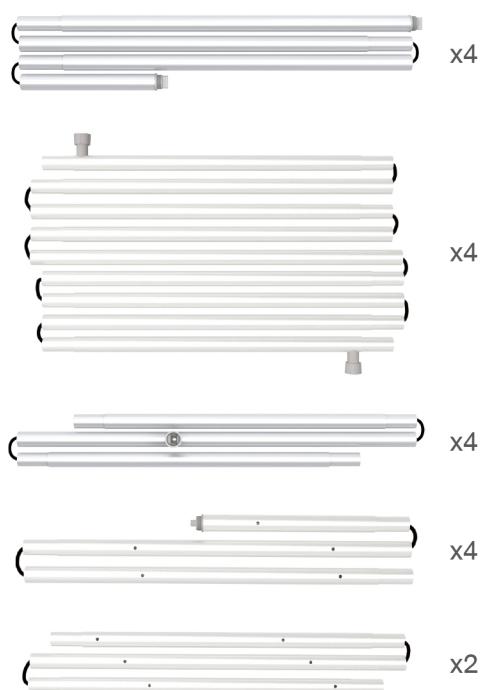


(3) LED Light Bar, Switching Power Supply & Connection Wire



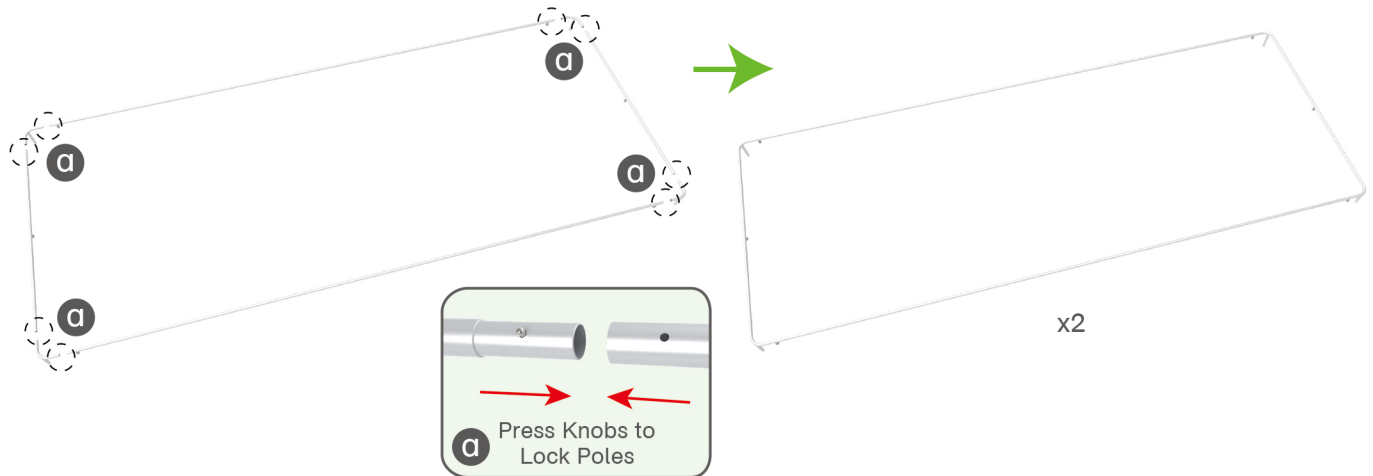
STEP 01

Connect to make long poles according to labelings.

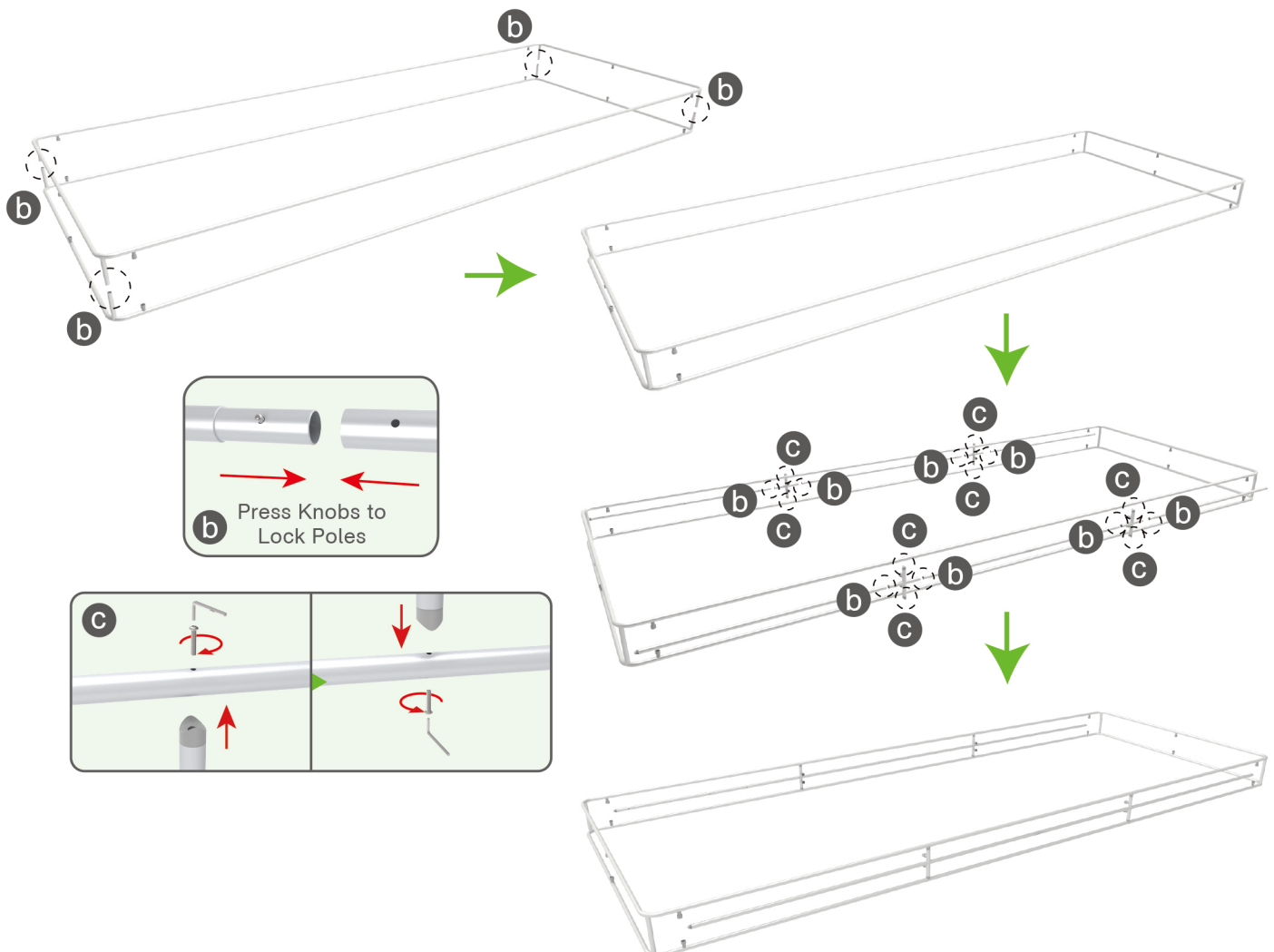


STEPS

STEP 02 Connect long poles with corner poles according to labelings.



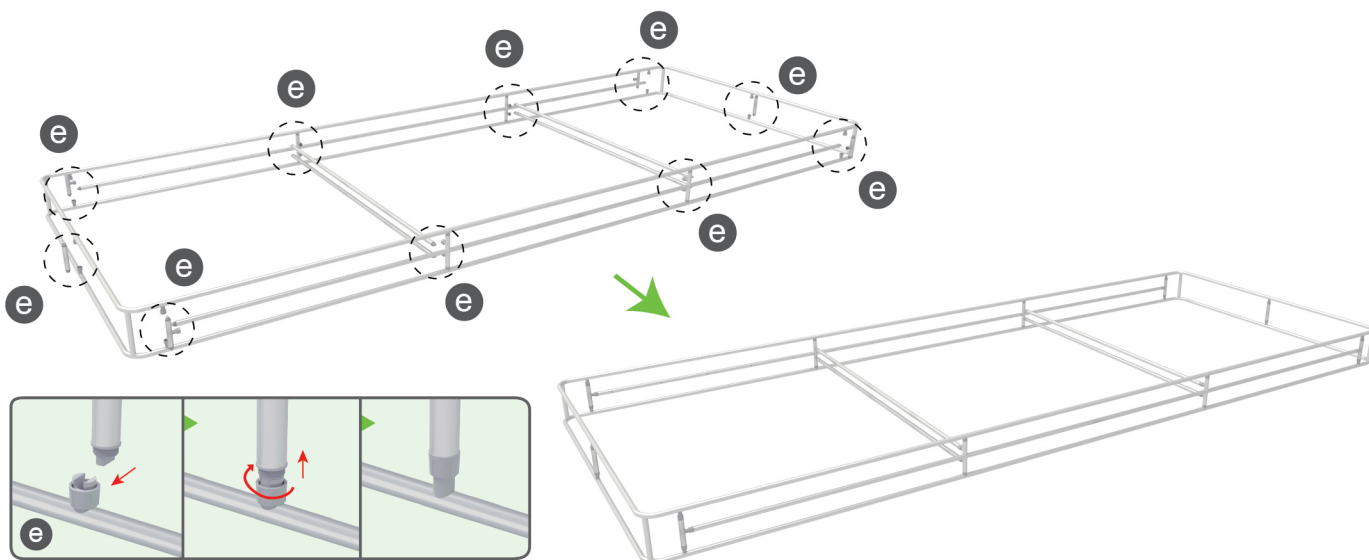
STEP 03 Interconnect corner poles to make column frame according to labelings.



STEPS

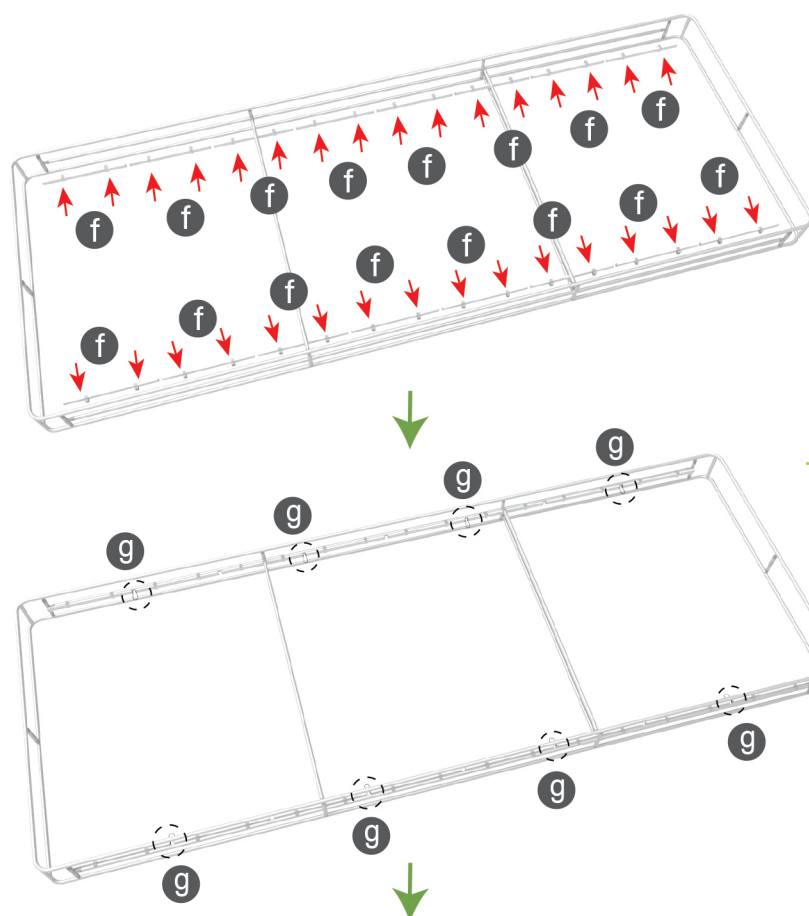
STEP 04

Connect support poles onto column frame.

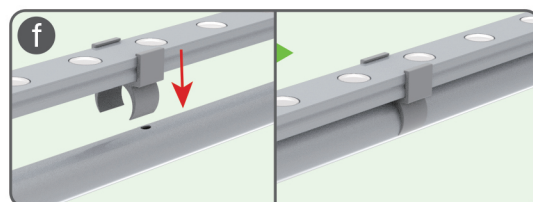


STEP 05

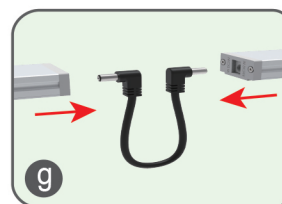
Install LED light bars & connect power wires.



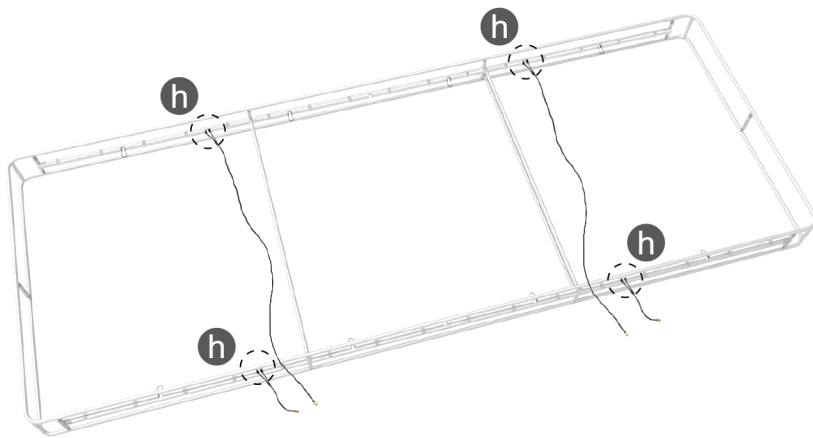
① Slide clips from LED light bars to align at holes of poles & press into.



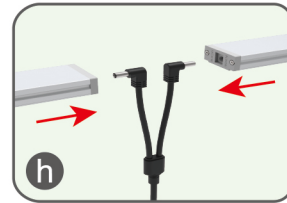
② Connect 2 adjacent LED light bars in series with DC connection wire.



STEPS



③ Connect those 2 adjacent LED light bars connected with Y-shaped connection wire, slightly adjust space between each LED light bar from 1" to 4".



STEP 06

Connect Y-shaped connection wire's XT60 connector to switching power supply, wrap column frame with fabric banner & zip up at corner.

