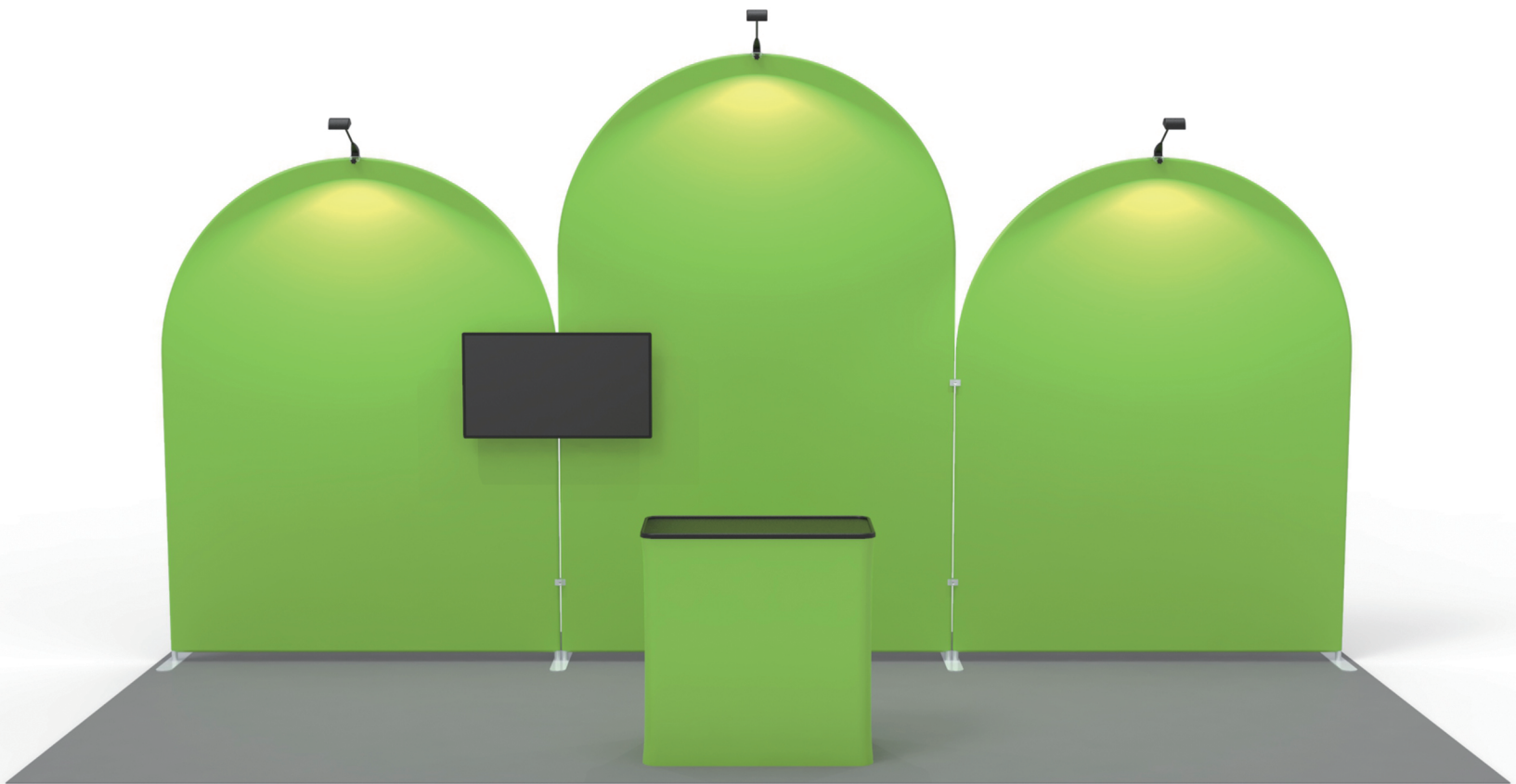


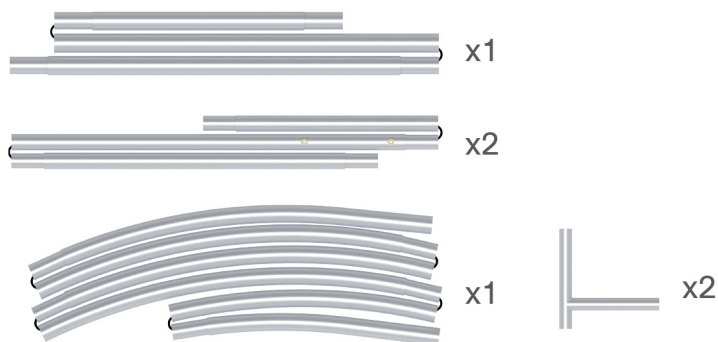
# INSTRUCTION



**10X20FT-BOOTH-31**

## STEPS

## (1) Hardware

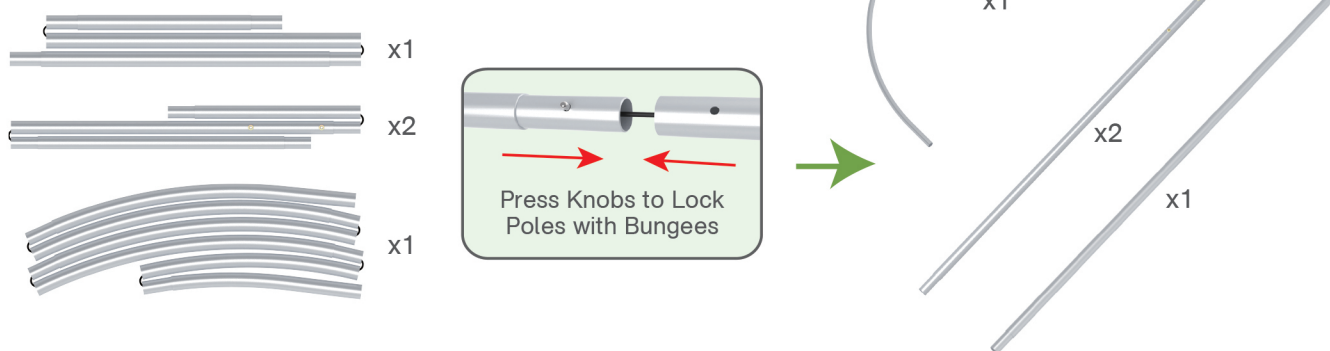


## (2) Printed Graphic Fabric Banner (Optional)



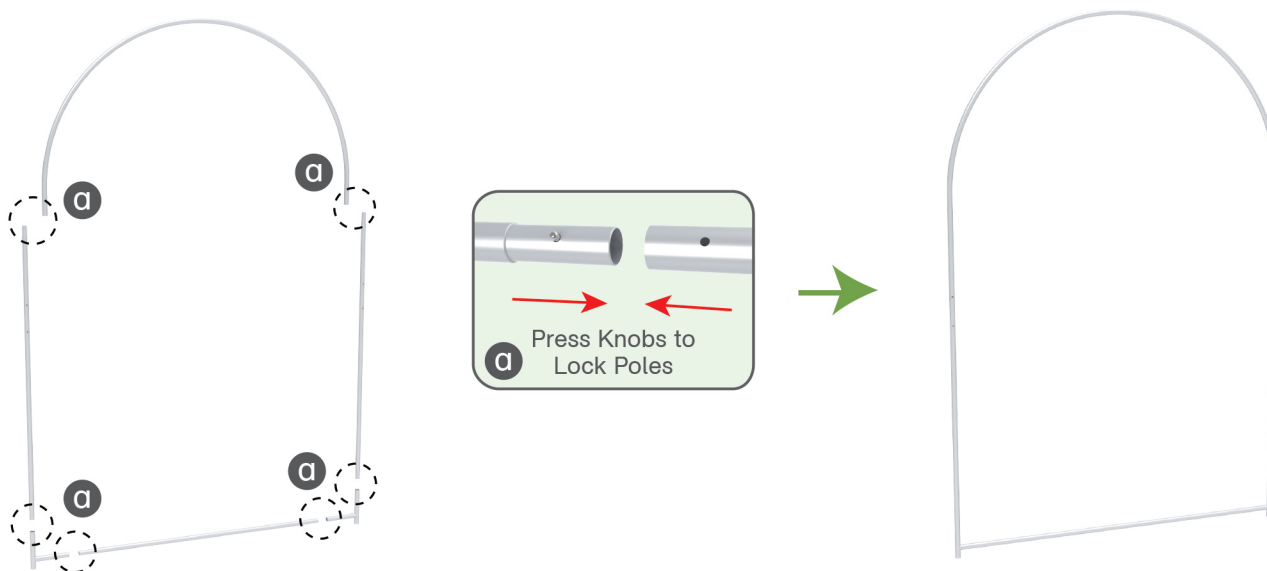
## STEP 01

Connect to make long poles according to labelings.



## STEP 02

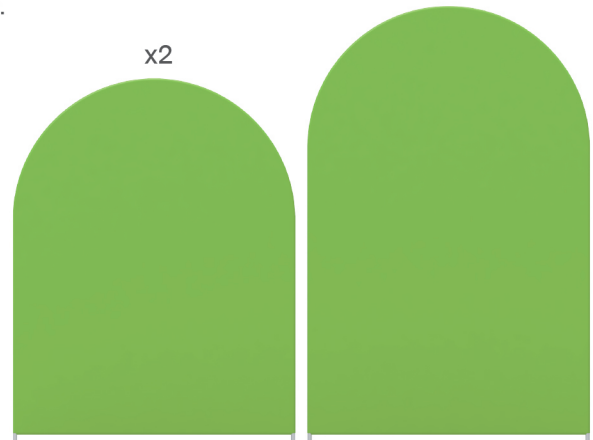
Connect long poles with corner poles according to labelings.



## STEPS

## STEP 03

Slide fabric banner on frame from top and zip up at bottom.

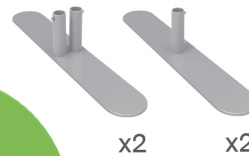


Same Steps for Other Display Stands

## Booth Set Assembly



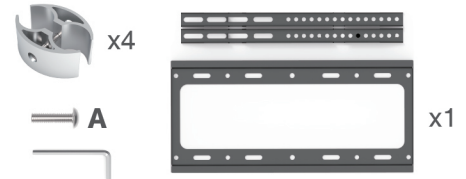
## (1) Base



## (2) LED Light &amp; Clip

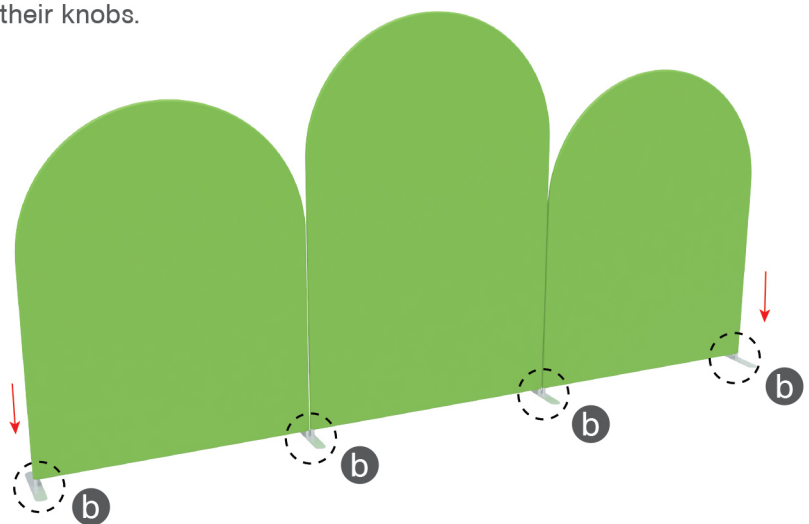
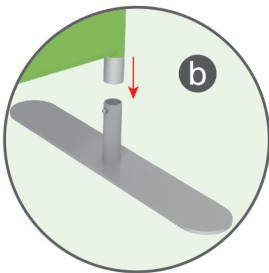


## (3) 180° C-Shaped Clip &amp; TV Mount



## STEP 01

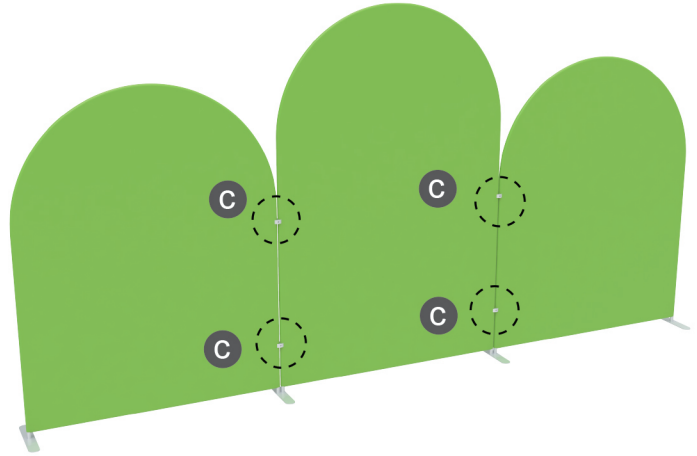
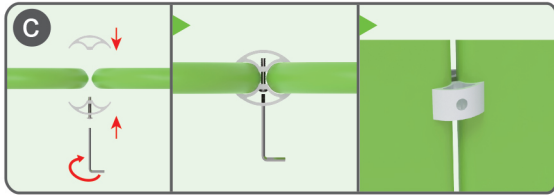
Insert display stands onto feet by pressing their knobs.



## STEPS

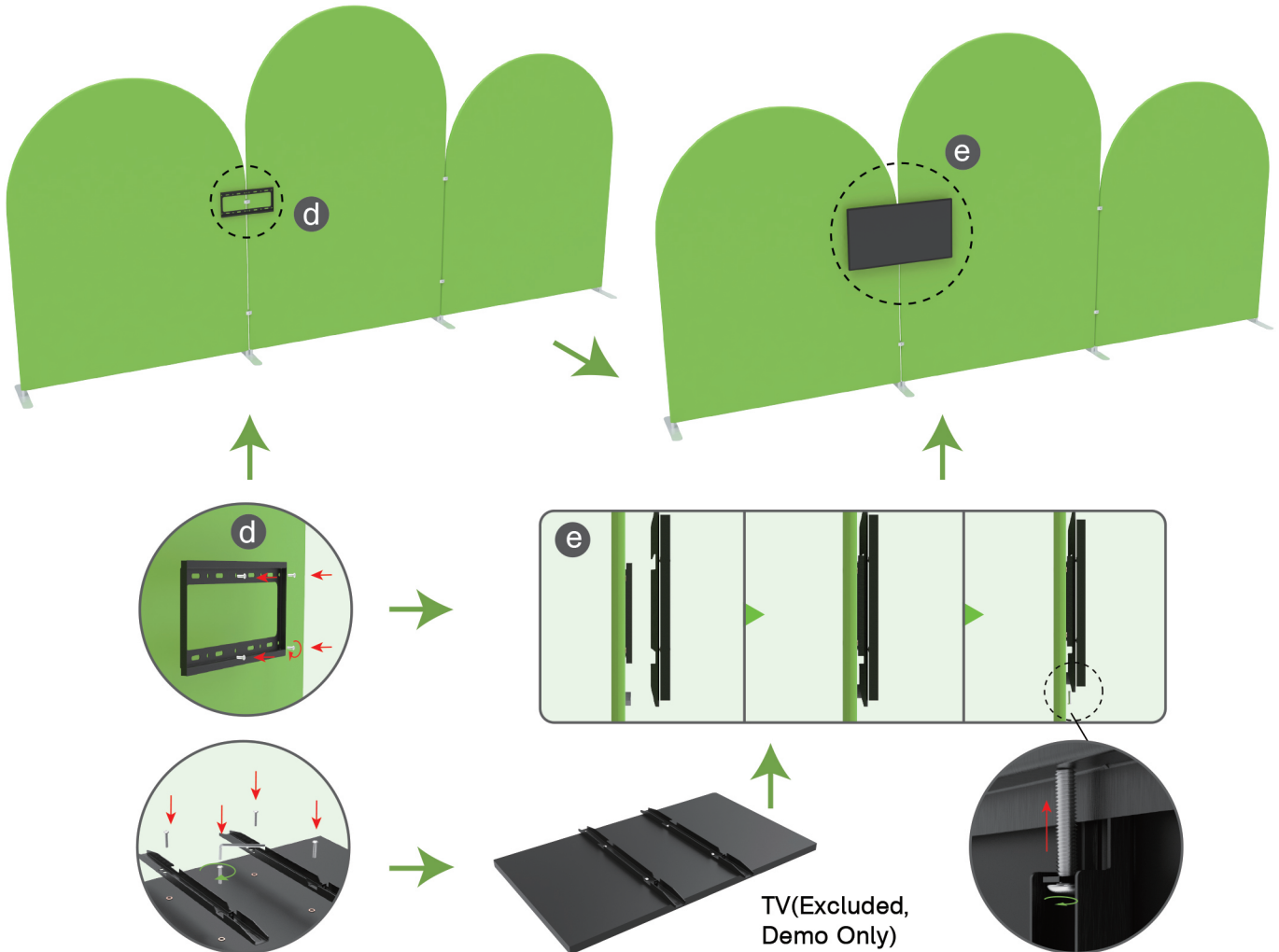
## STEP 02

Interconnect display stands with C-shaped clips.



## STEP 03

Screw TV mount with hex wrench.

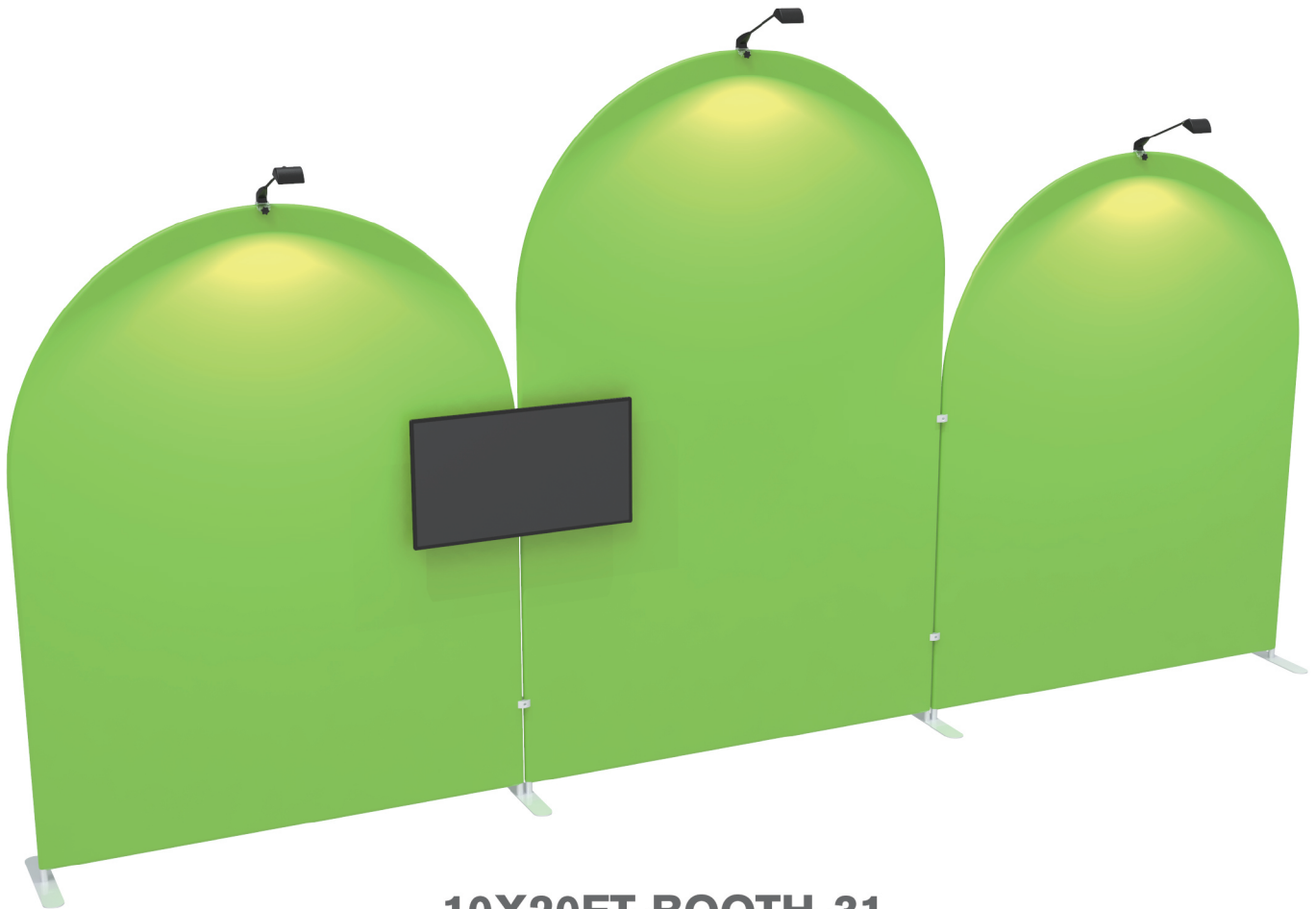
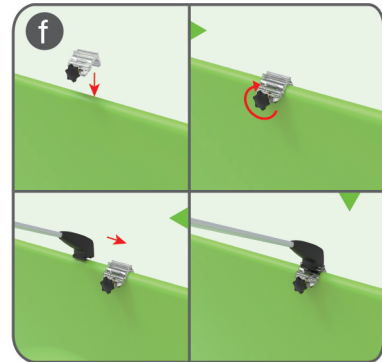
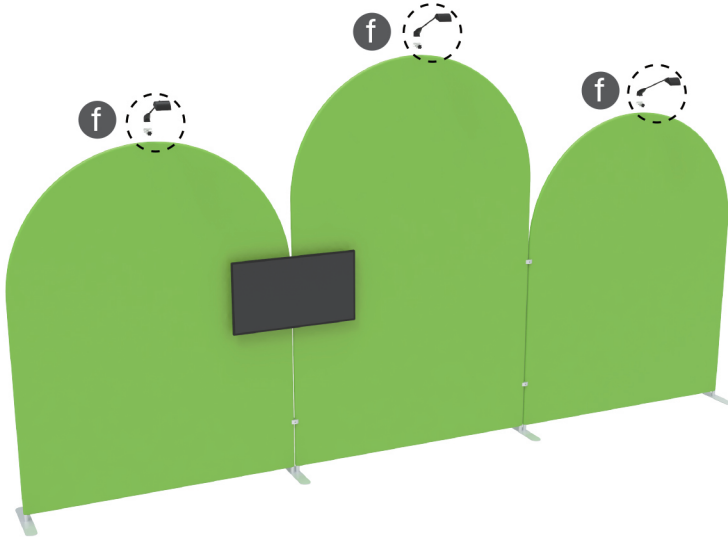




## STEPS

## STEP 04

Screw light clips at top of display stands, slide lights onto them and adjust their direction.



10X20FT-BOOTH-31

## STEPS

(1) Durable Plastic Hard Case, Aluminum Support Poles

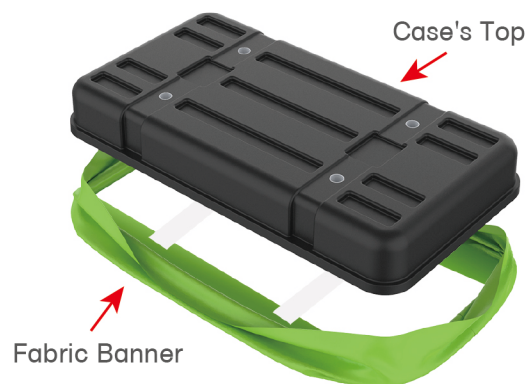


(2) Printed Graphic Fabric Banner



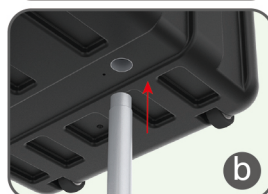
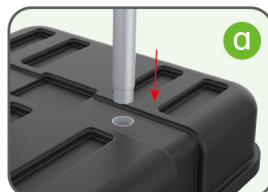
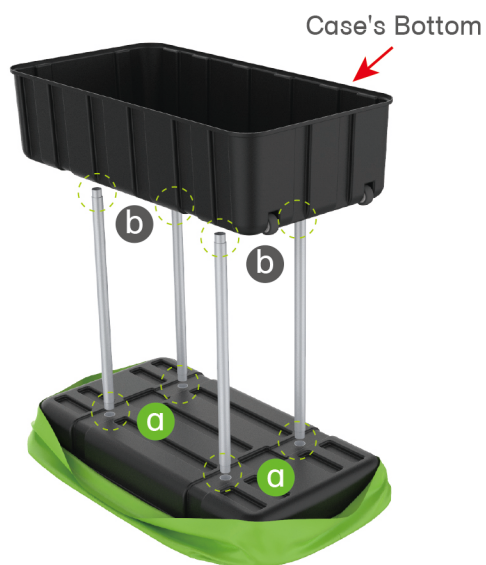
## STEP 01

Put hard case's top into fabric banner.



## STEP 02

Insert support poles into hard case's top &amp; bottom.



## STEPS

## STEP 04

Wrap fabric banner from bottom to top & twist it to be smooth, lay hard case's intermediate panel on podium's top.

