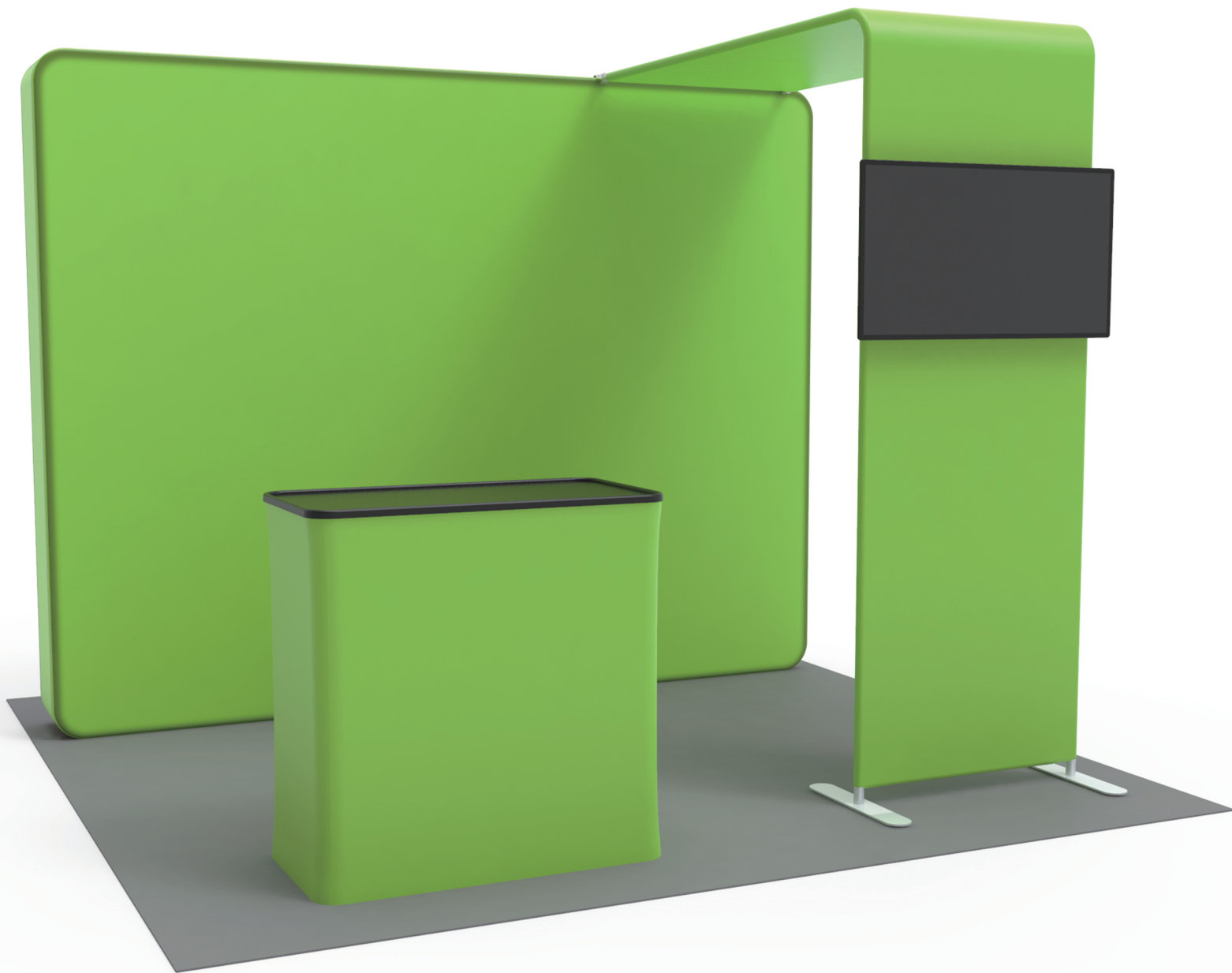


INSTRUCTION

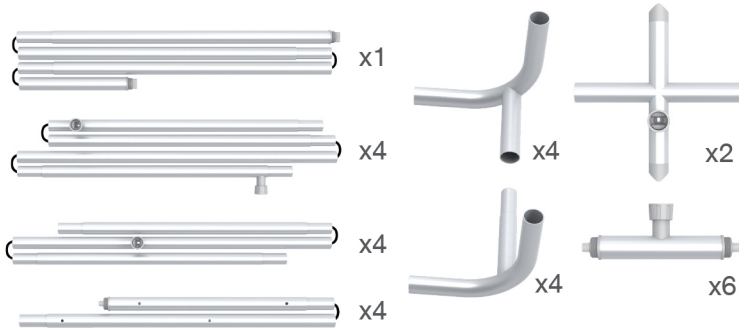


10X10FT-BOOTH-32

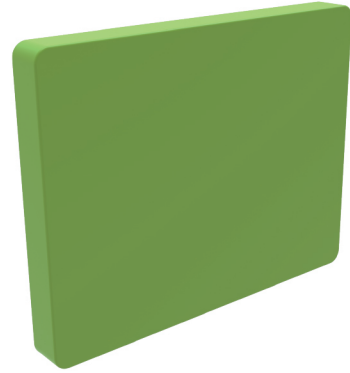
★ One Tool (Hex Wrench)

STEPS

(1) Hardware



(2) Printed Graphic Fabric Banner (Optional)

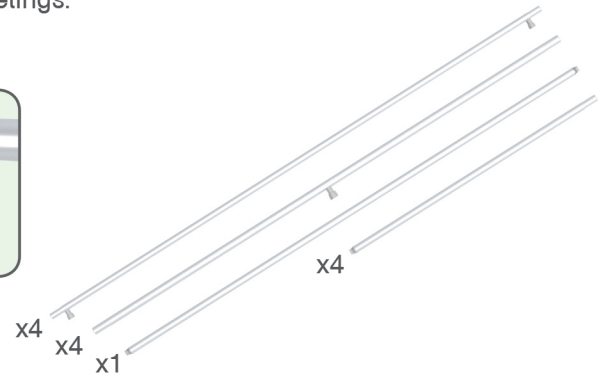
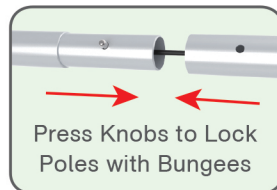


(3) LED Light Bar, Switching Power Supply & Connection Wire



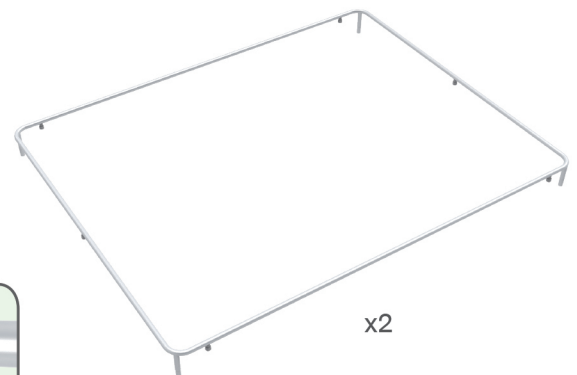
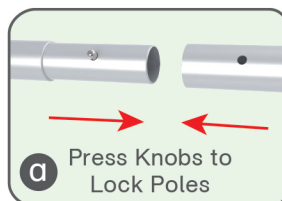
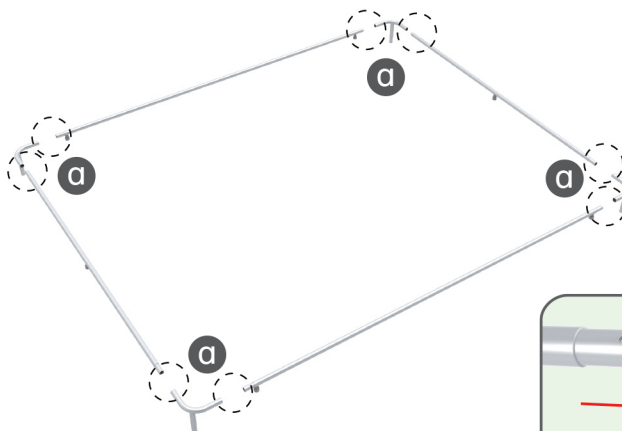
STEP 01

Connect to make long poles according to labelings.



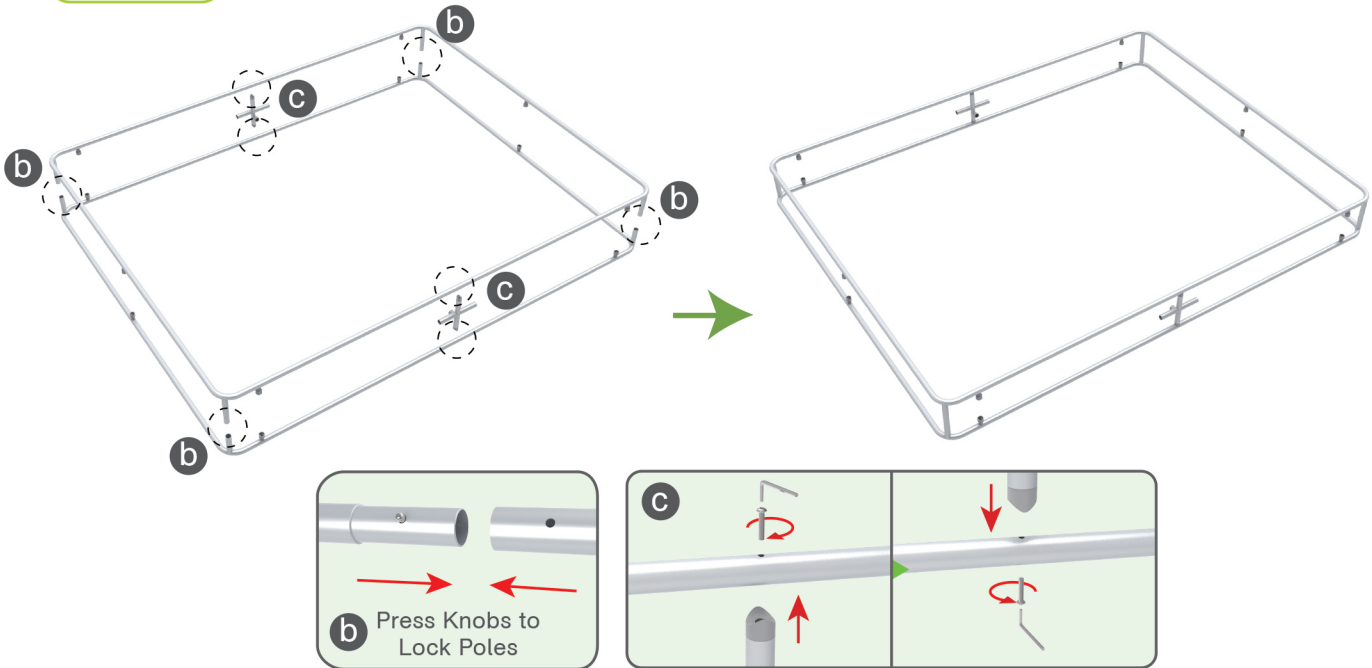
STEP 02

Connect long poles with corner poles according to labelings.

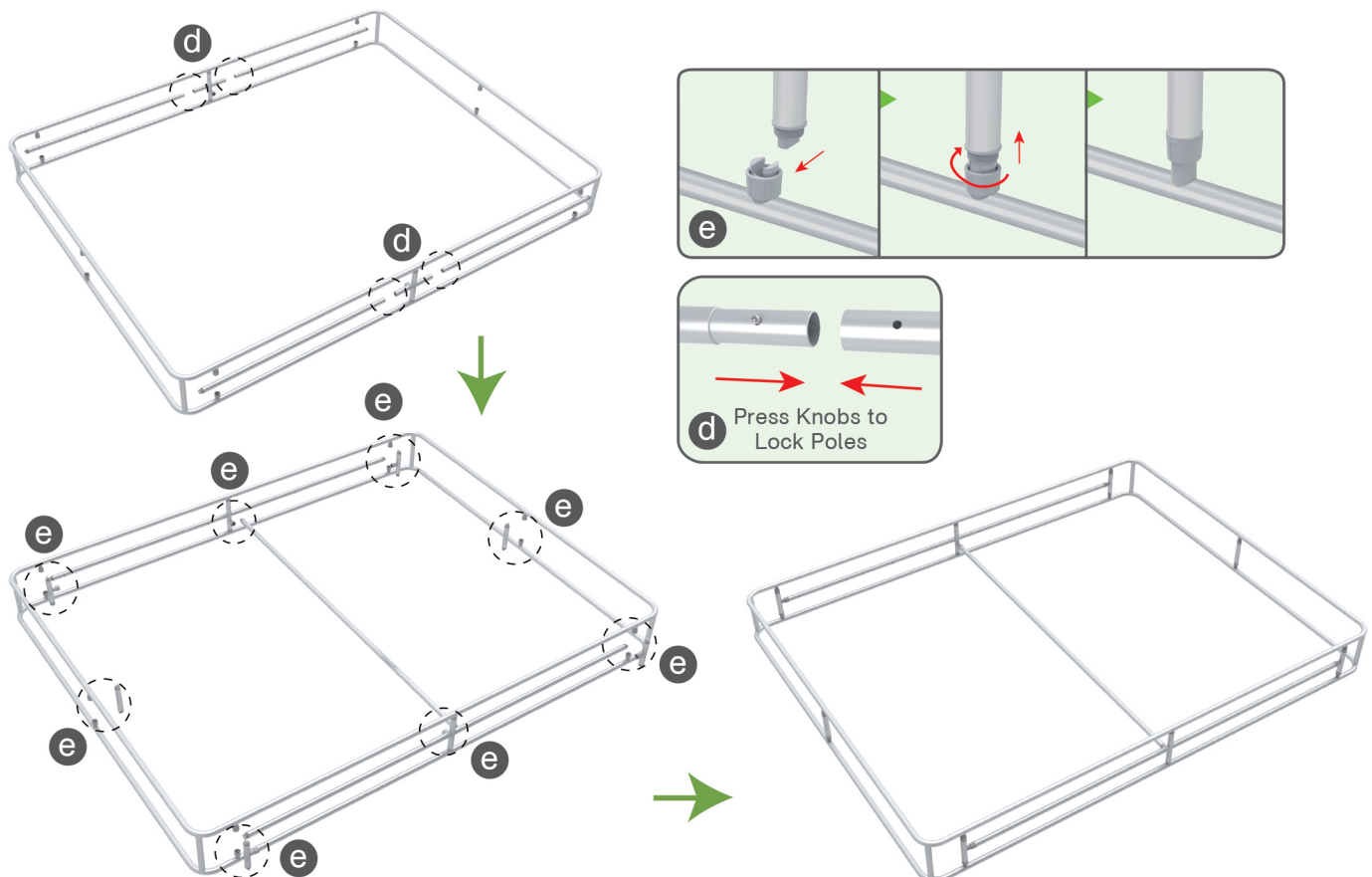


STEPS

STEP 03 Interconnect corner poles to make column frame according to labelings.

**STEP 04**

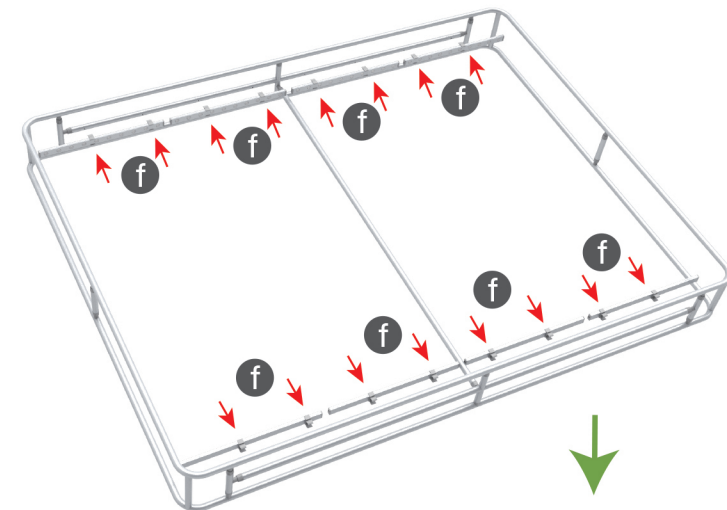
Connect long poles with corner poles according to labelings, connect support poles onto column frame.



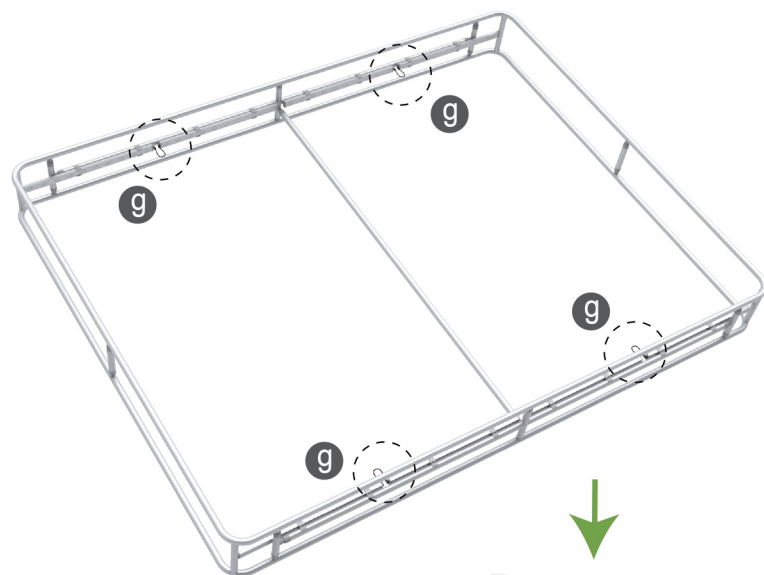
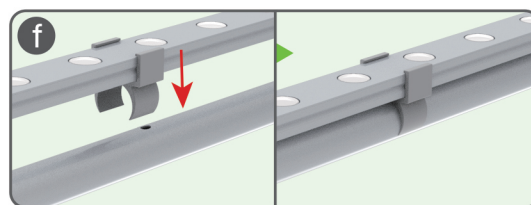
STEPS

STEP 05

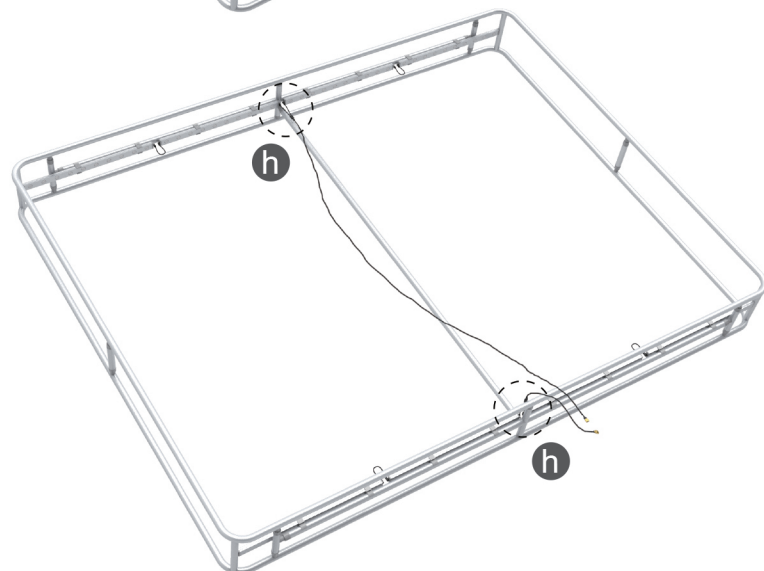
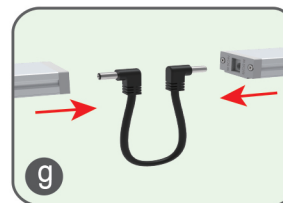
Install LED light bars & connect power wires.



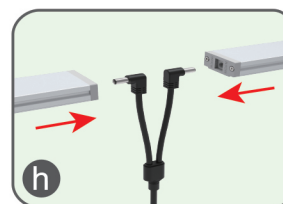
① Slide clips from LED light bars to align at holes of poles & press into.



② Connect 2 adjacent LED light bars in series with DC connection wire.

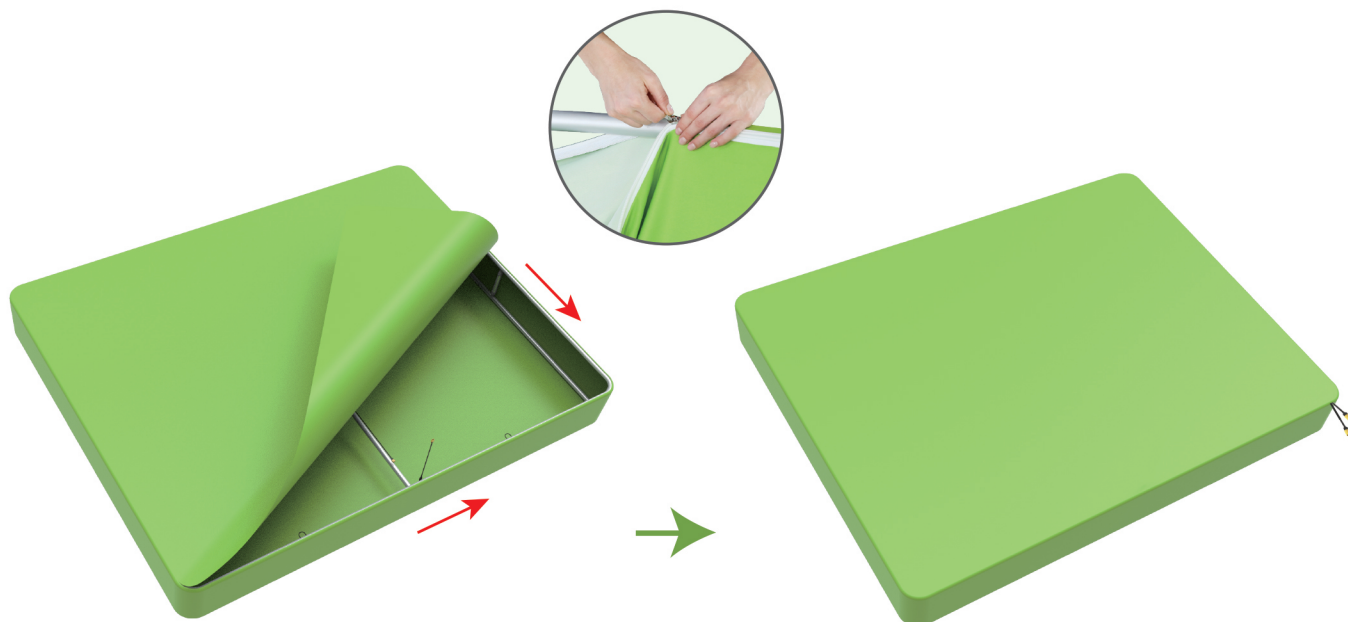


③ Connect those 2 adjacent LED light bars connected with Y-shaped connection wire, slightly adjust space between each LED light bar from 1" to 4".

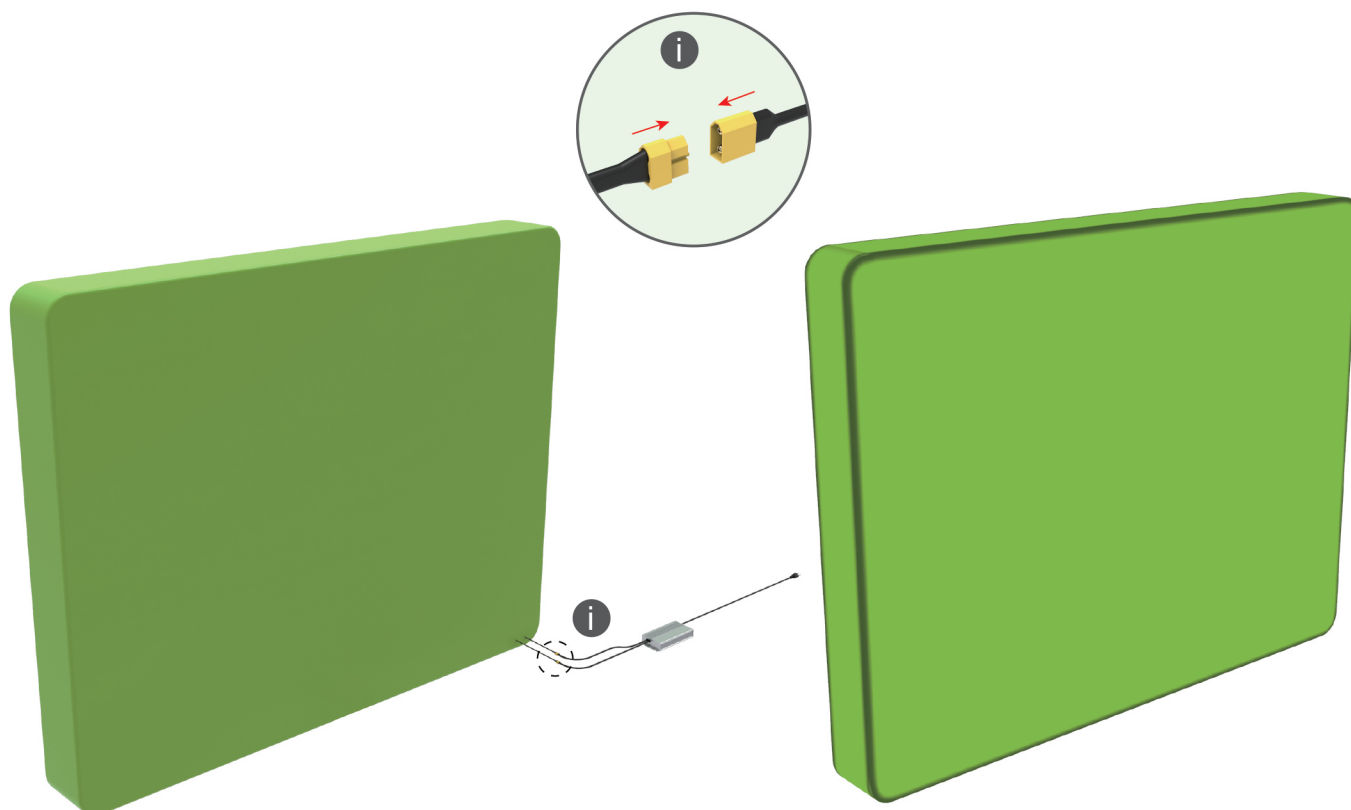


STEPS

STEP 06 Wrap column frame with fabric banner & zip up at corner.

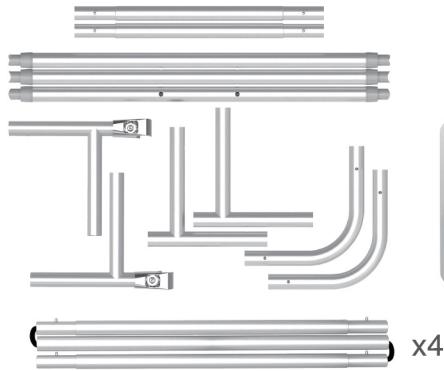
**STEP 07**

Connect Y-shaped connection wire's XT60 connector to switching power supply.



STEPS

(1) Hardware

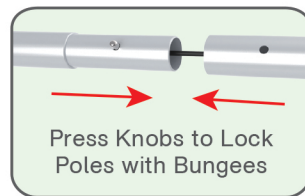


(2) Printed Graphic Fabric Banner (Optional)



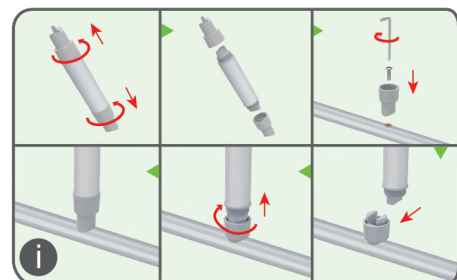
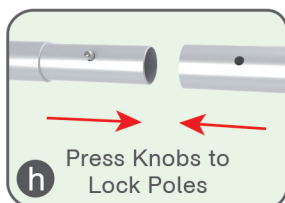
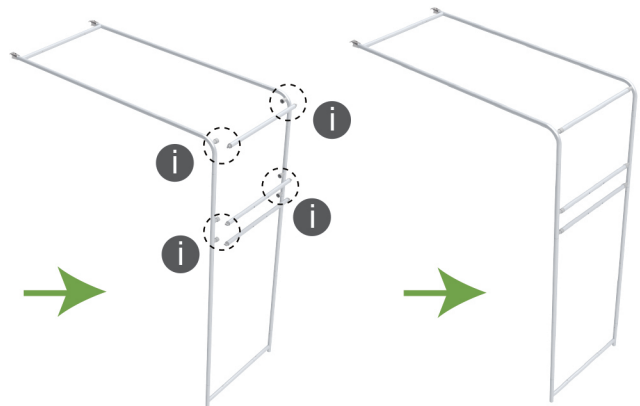
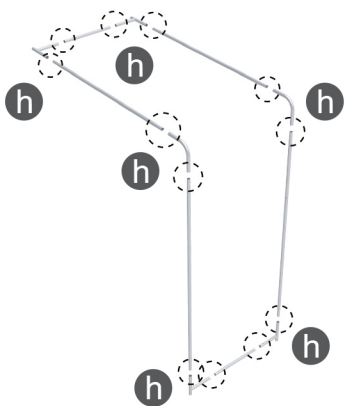
STEP 01

Connect to make long poles according to labelings.



STEP 02

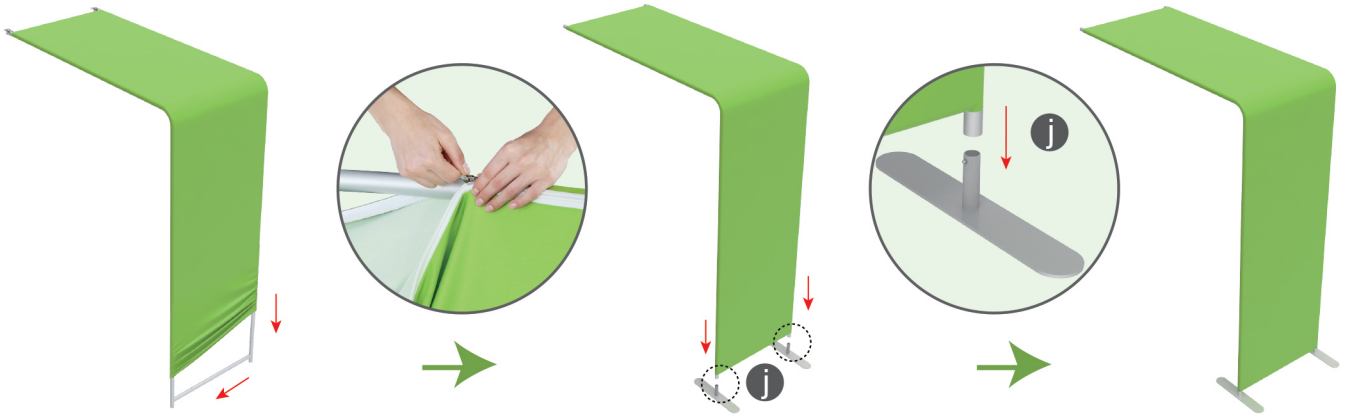
Connect long poles with corner poles according to labelings, connect support poles onto frame.



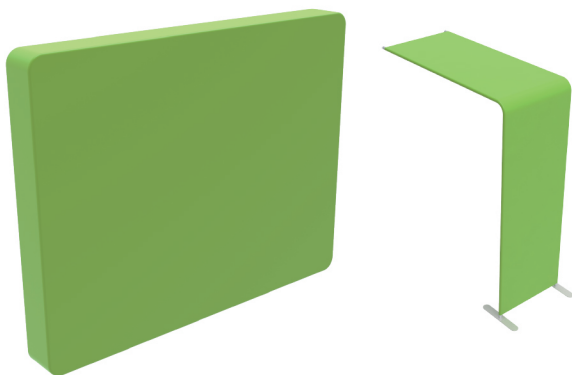
STEPS

STEP 03

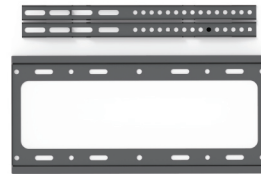
Slide fabric banner on frame from top and zip up at bottom, insert display stands onto feet by pressing their knobs.



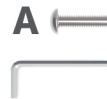
Booth Set Assembly



(1) TV Mount

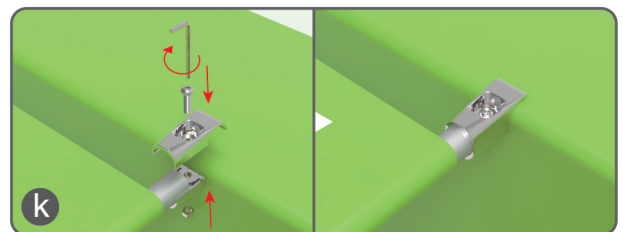
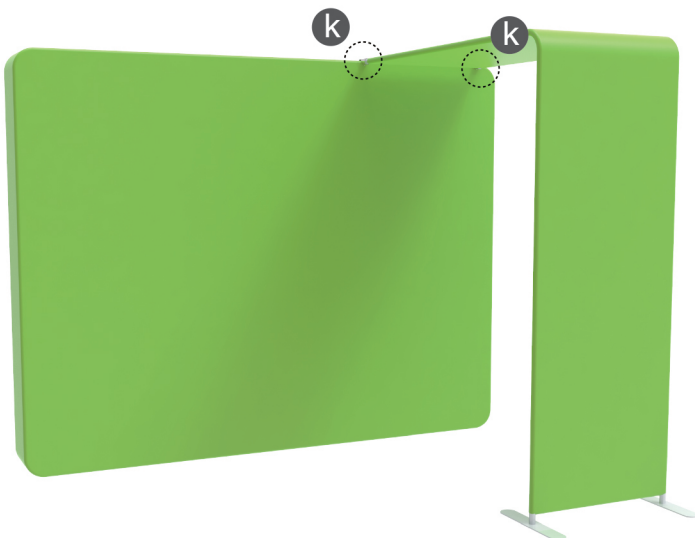


(2) Arm Clip

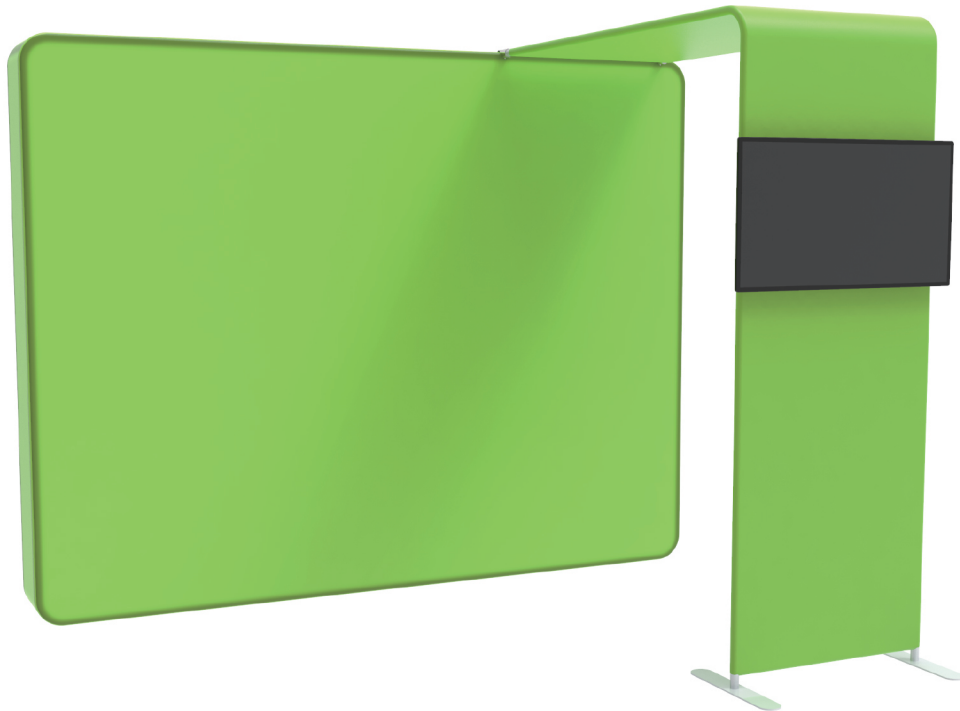
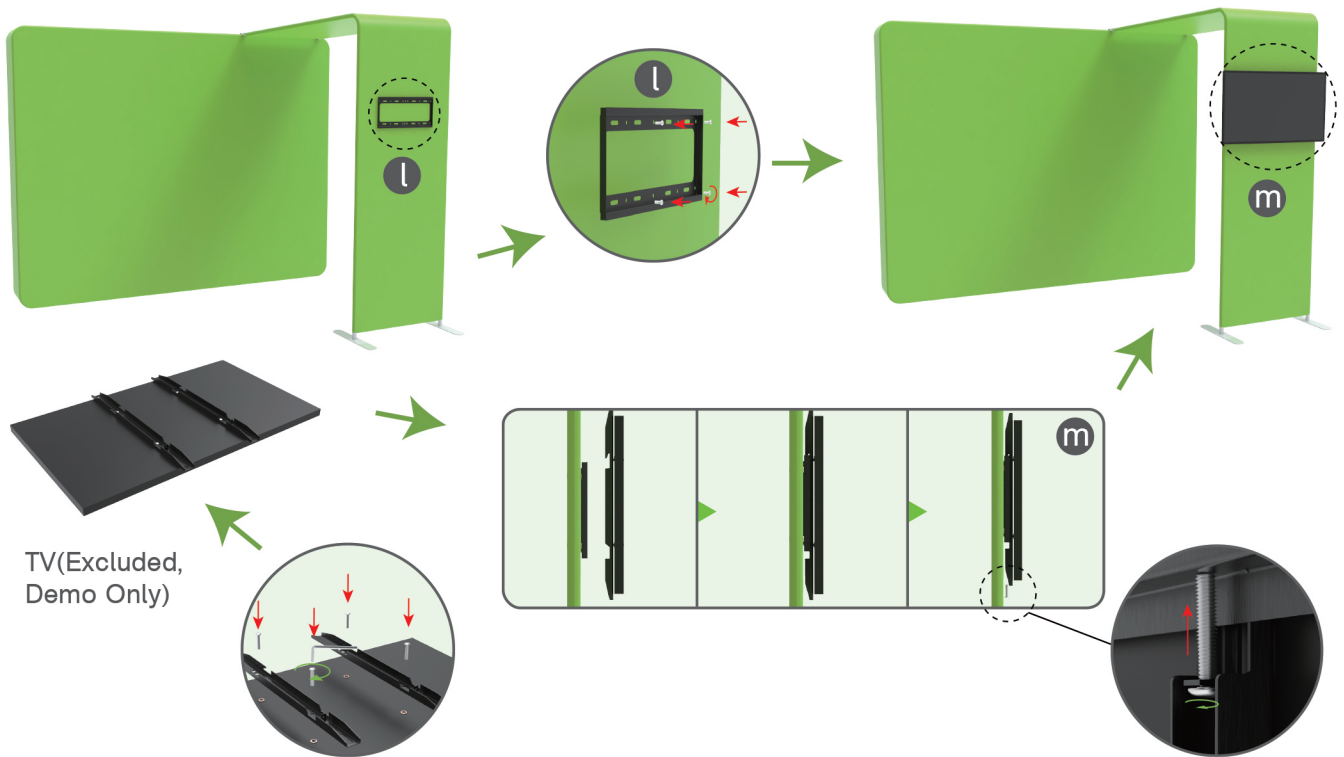


STEP 01

Connect display stands with arm clips.



STEPS

STEP 02 Screw TV mount with hex wrench.

10X10FT-BOOTH-32

STEPS

(1) Durable Plastic Hard Case, Aluminum Support Poles

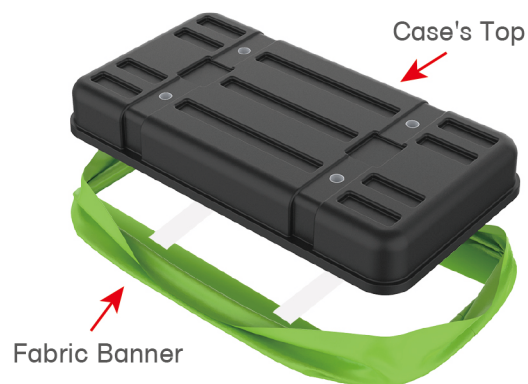


(2) Printed Graphic Fabric Banner



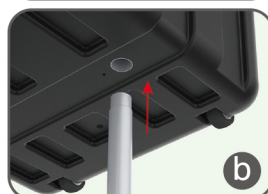
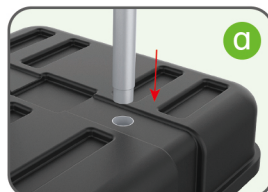
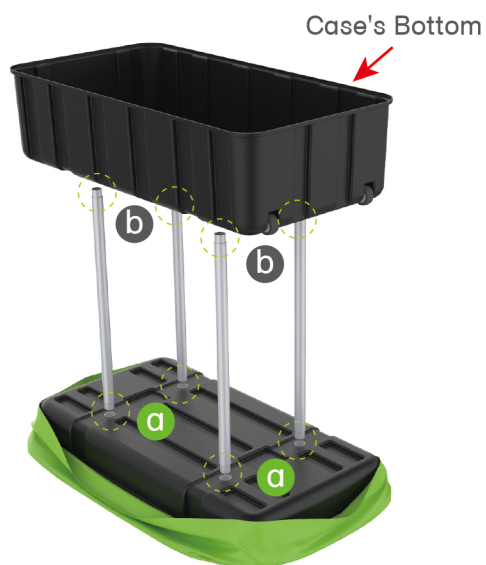
STEP 01

Put hard case's top into fabric banner.



STEP 02

Insert support poles into hard case's top & bottom.



STEPS

STEP 04

Wrap fabric banner from bottom to top & twist it to be smooth, lay hard case's intermediate panel on podium's top.

