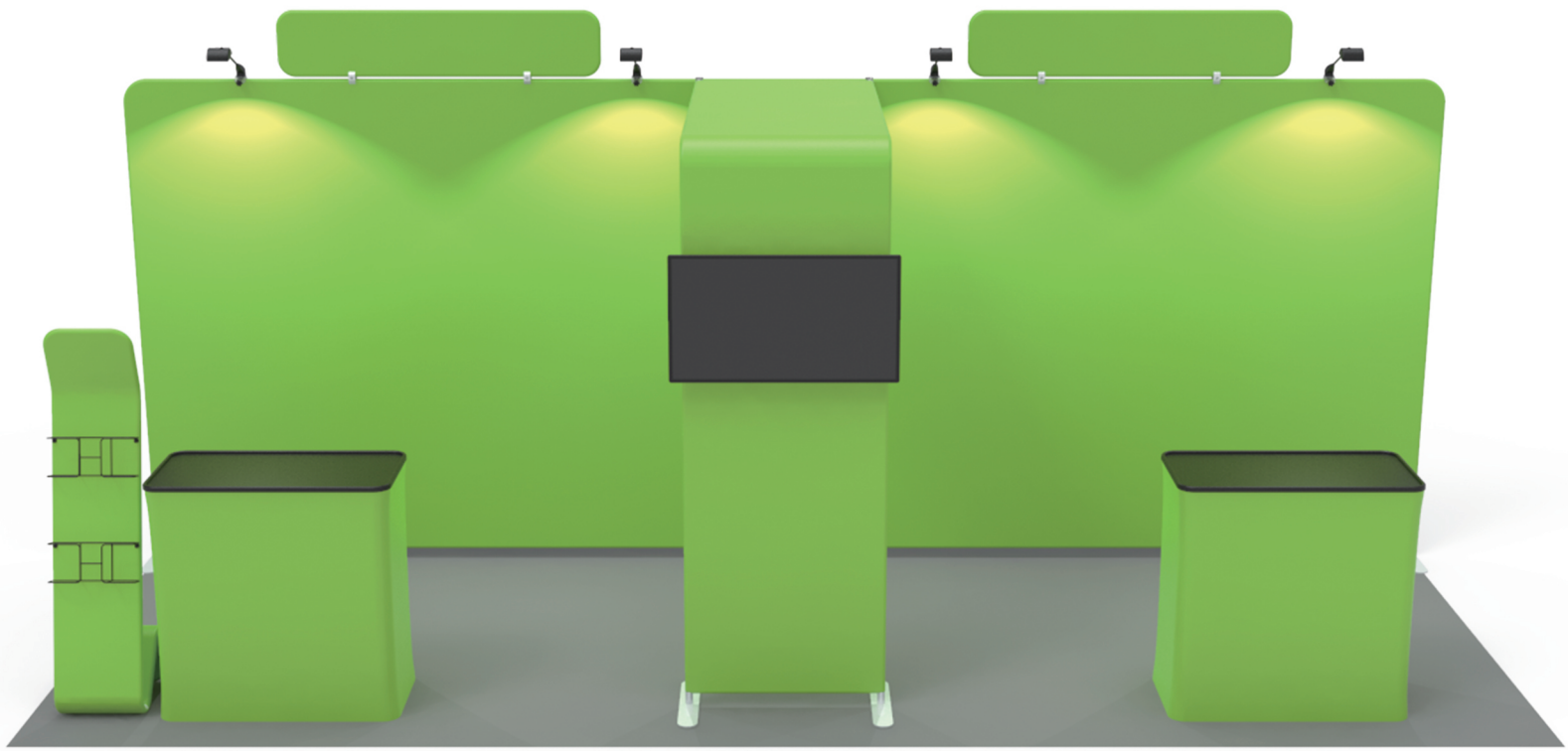


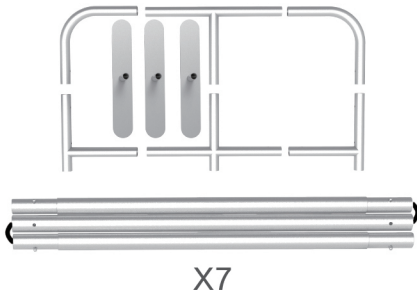
INSTRUCTION



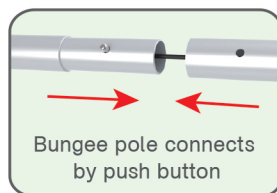
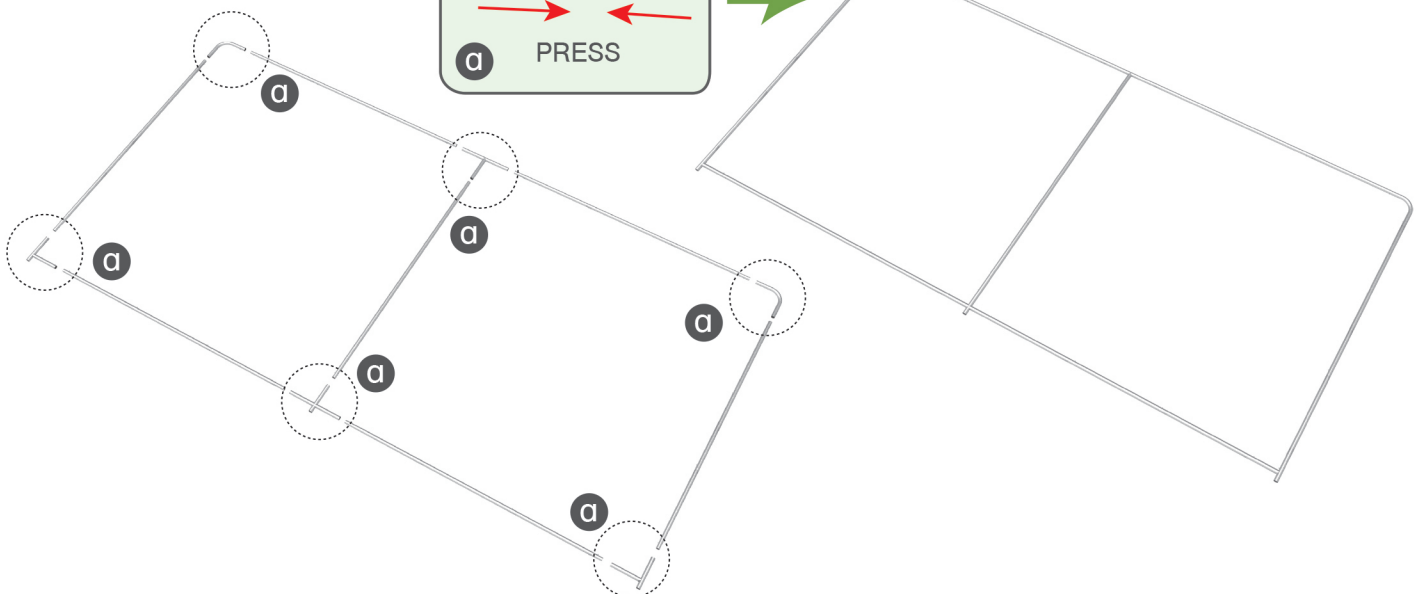
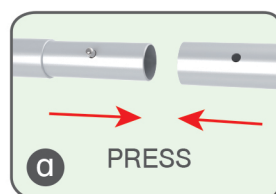
10X20FT-BOOTH-30

STEPS

(1) Hardware

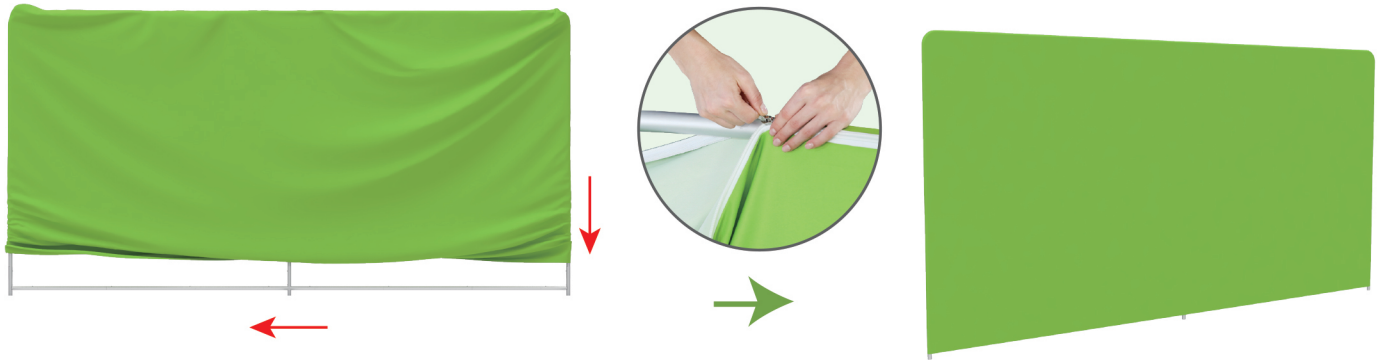


(2) Printed Graphic Fabric Banner (Optional)

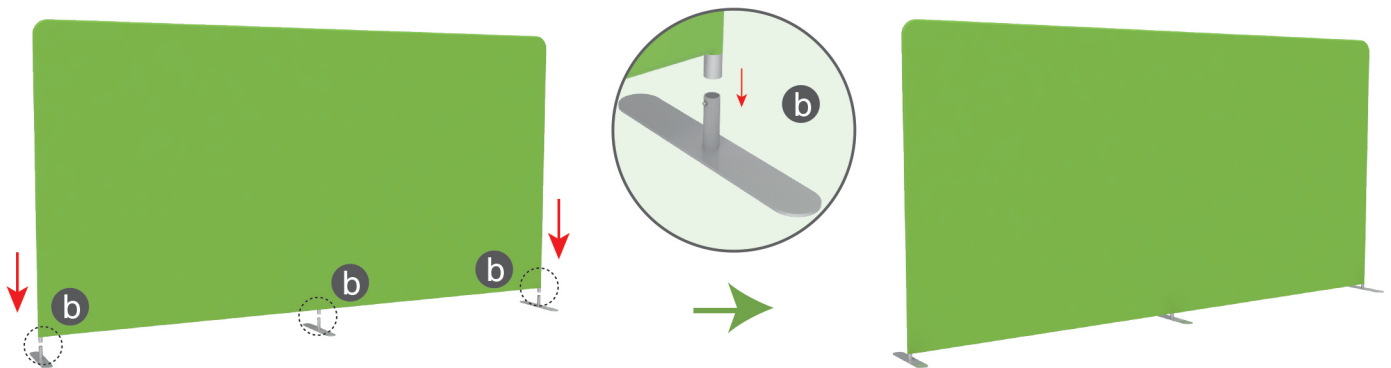
**STEP 01** To connect the poles according to the labellings**STEP 02** To connect the long poles by corner pieces according to labellings and assemble middle upright pole in position.

STEPS

STEP 03 To slide the fabric banner on the frame from top and zip up at bottom



STEP 04 To assemble the stand feet in position



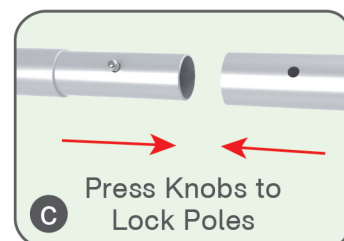
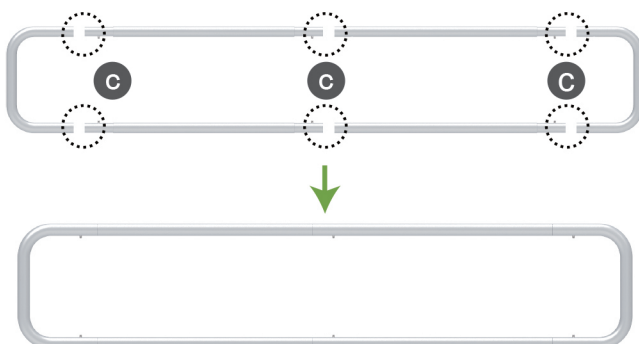
(1) Hardware



(2) Printed Graphic Fabric Banner (Optional)

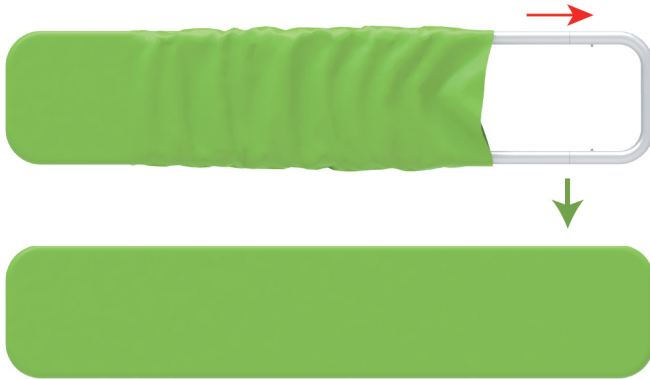


STEP 01 Connect poles according to labelings.

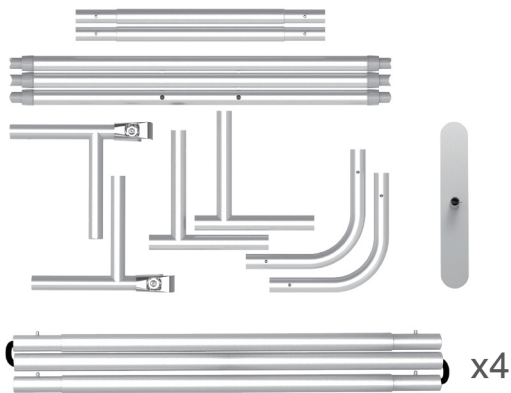


STEPS

STEP 02 Slide fabric banner on frame from left and zip up at right.



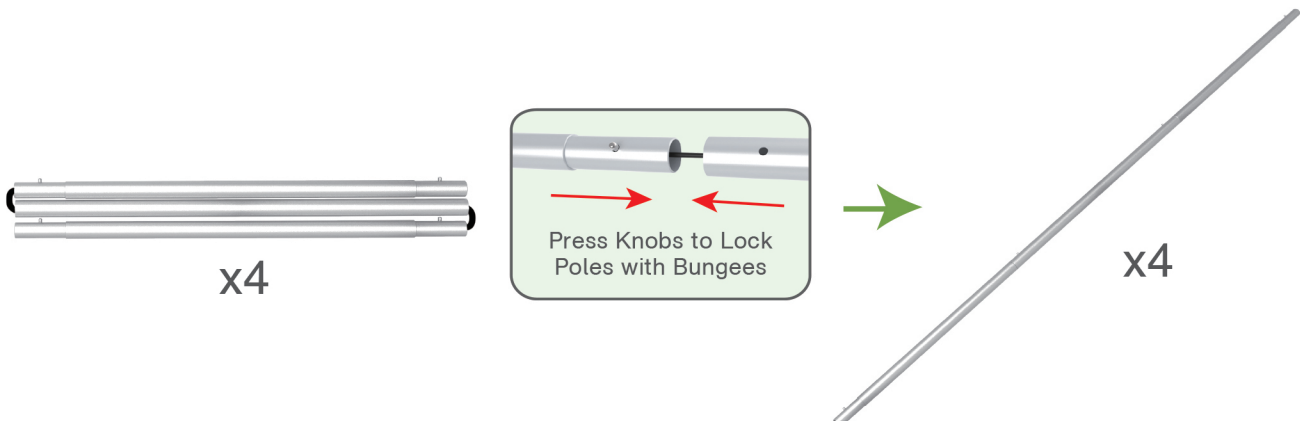
(1) Hardware



(2) Printed Graphic Fabric Banner (Optional)

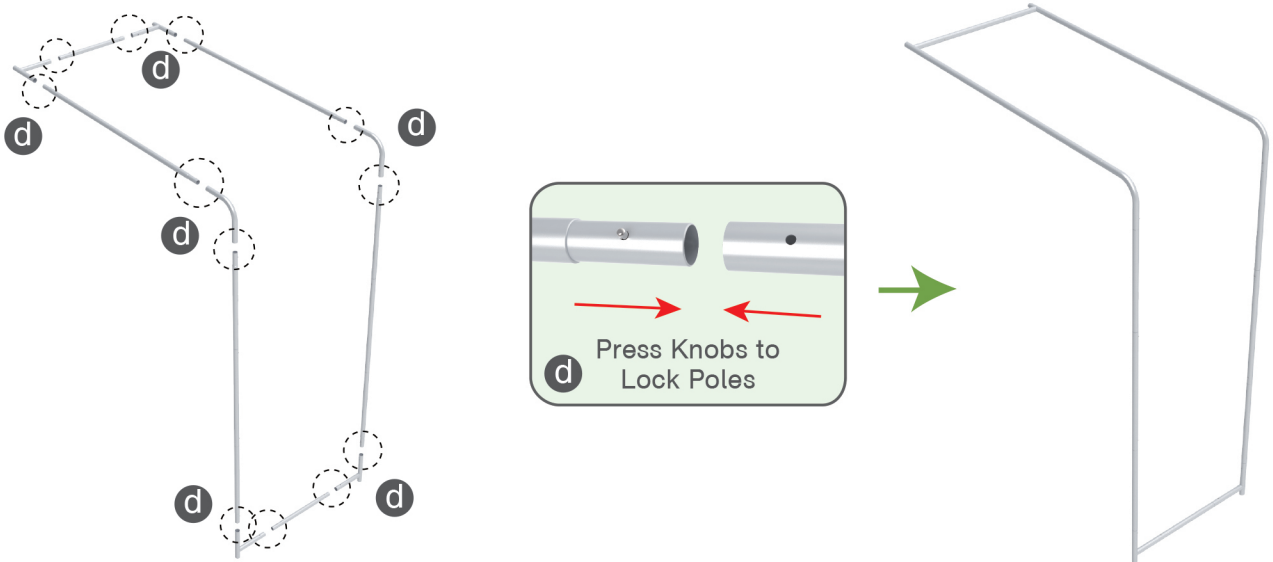


STEP 01 Connect to make long poles according to labelings.

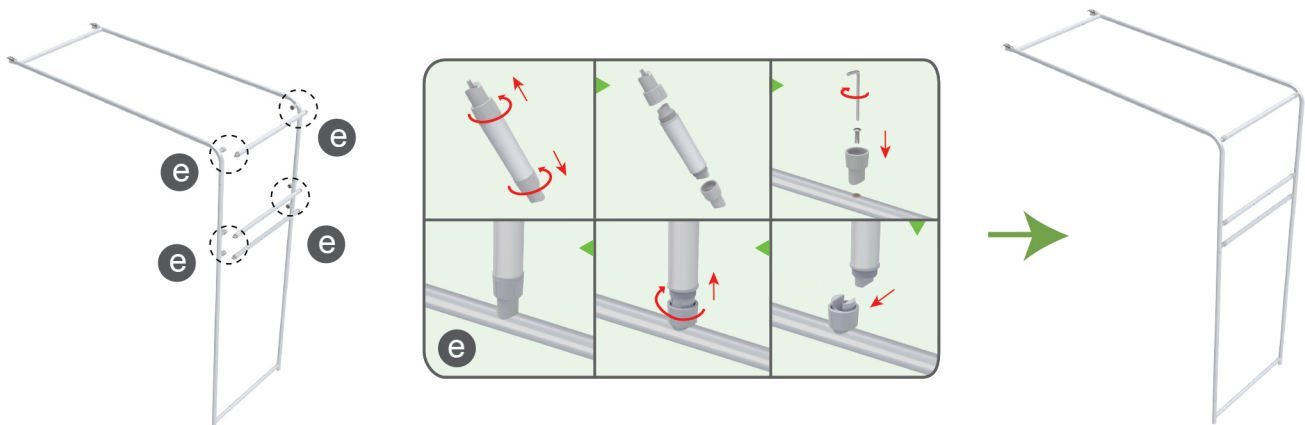


STEPS

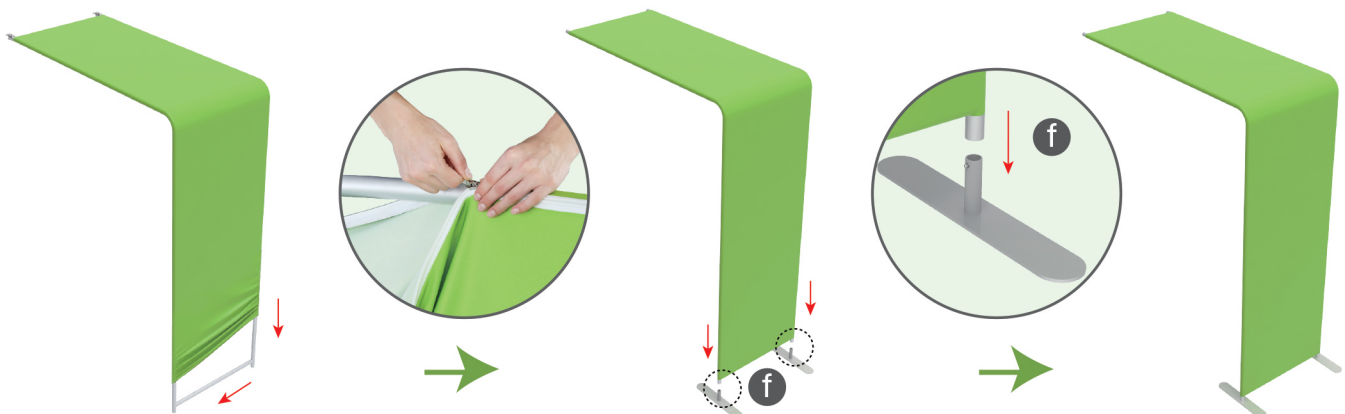
STEP 02 Connect long poles with corner poles according to labelings.



STEP 03 Connect support poles onto frame.

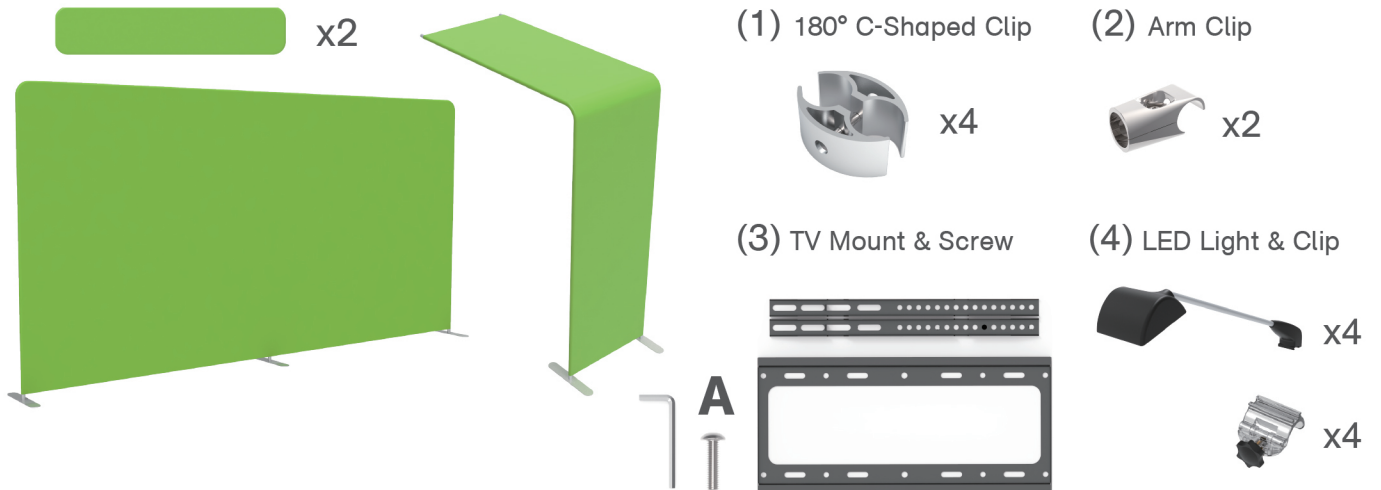
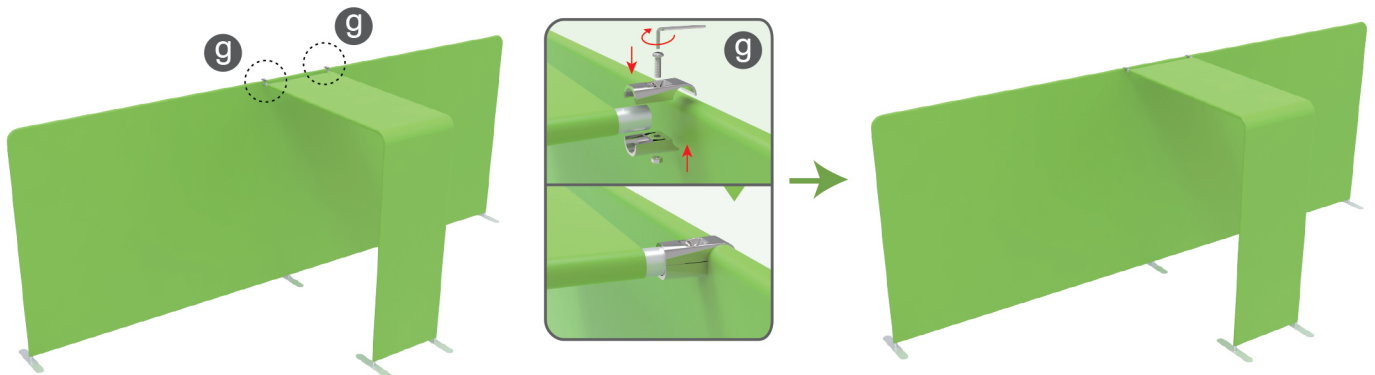
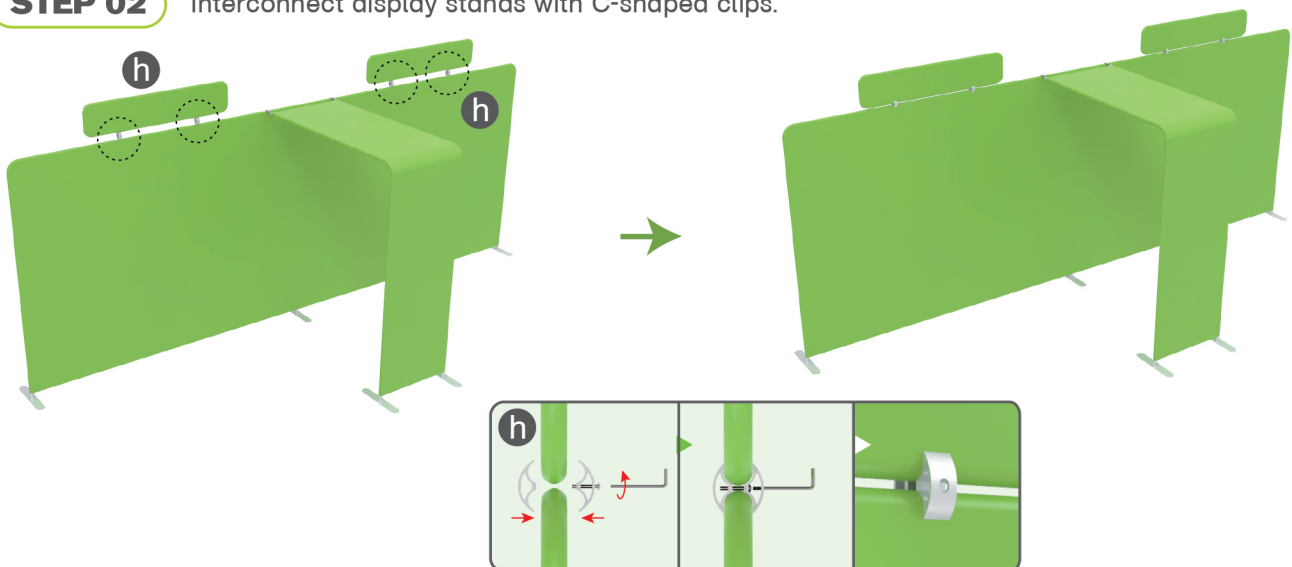


STEP 04 Slide fabric banner on frame from top and zip up at bottom, insert display stands onto feet by pressing their knobs.

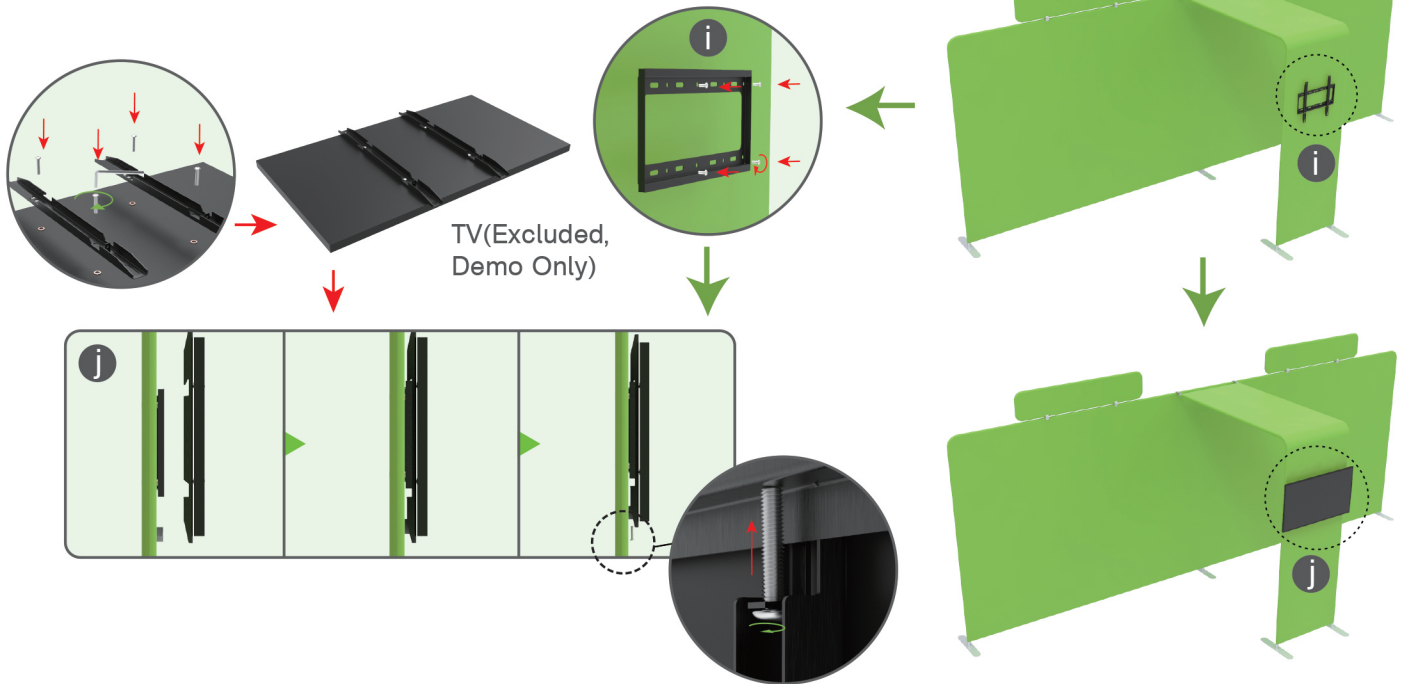


STEPS

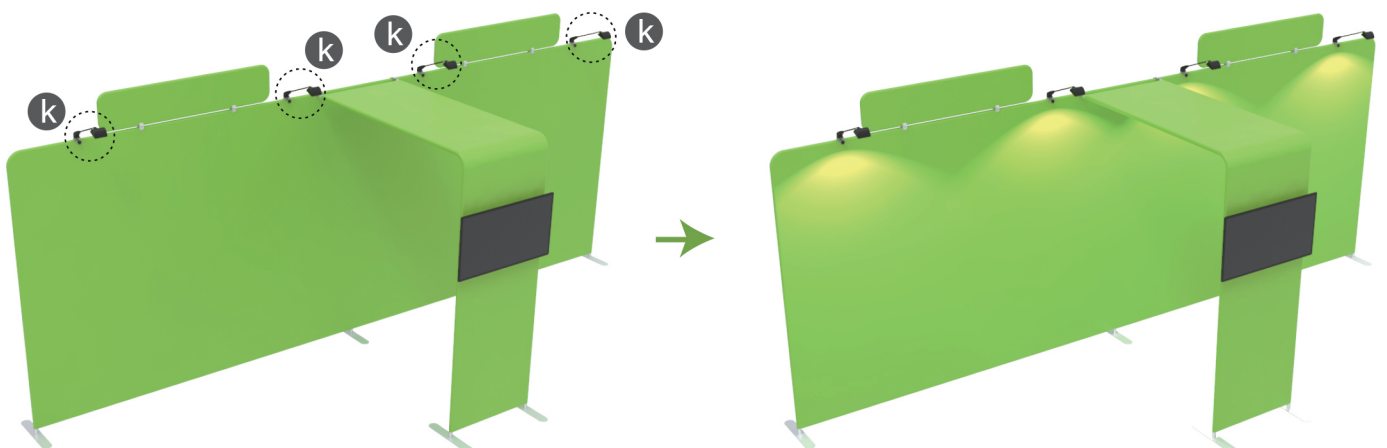
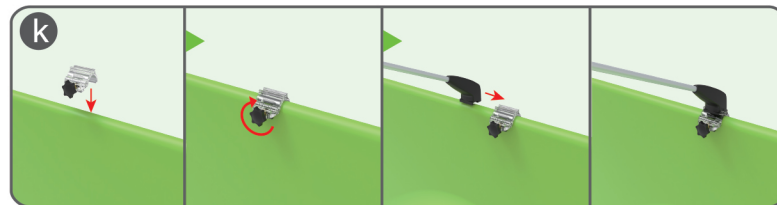
Booth Set Assembly

**STEP 01** Connect display stands with arm clips.**STEP 02** Interconnect display stands with C-shaped clips.

STEPS

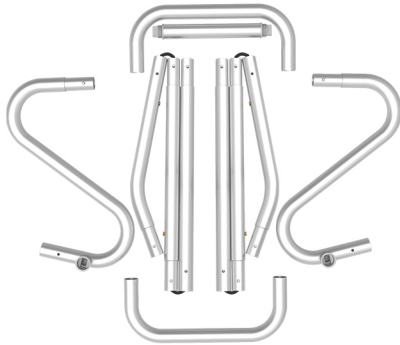
STEP 03 Screw TV mount with hex wrench.**STEP 05**

Screw light clips at top of display stands, slide lights onto them and adjust their direction.



STEPS

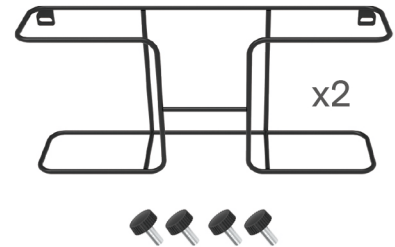
(1) Snap Tubes



(2) Printed fabric banner

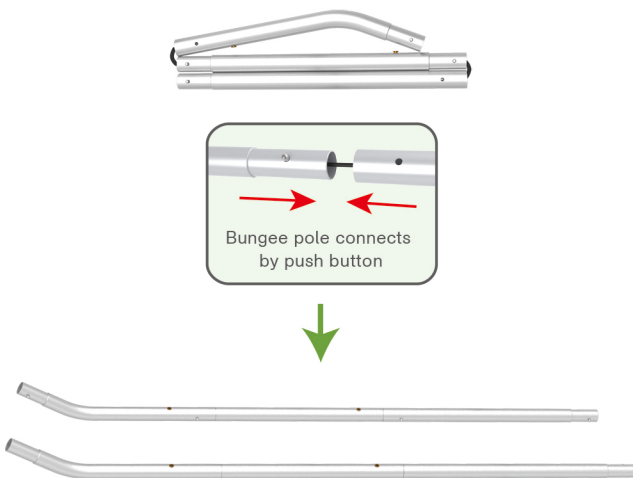


(3) Brochure rack x 2
Screws x 4



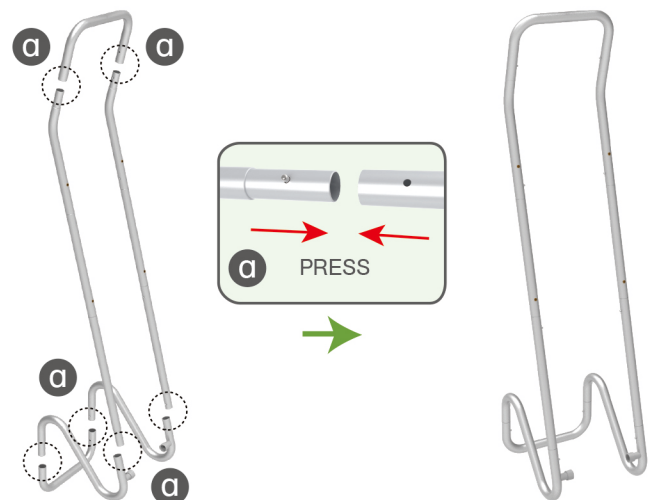
STEP 01

To Connect the tubes according to the labellings



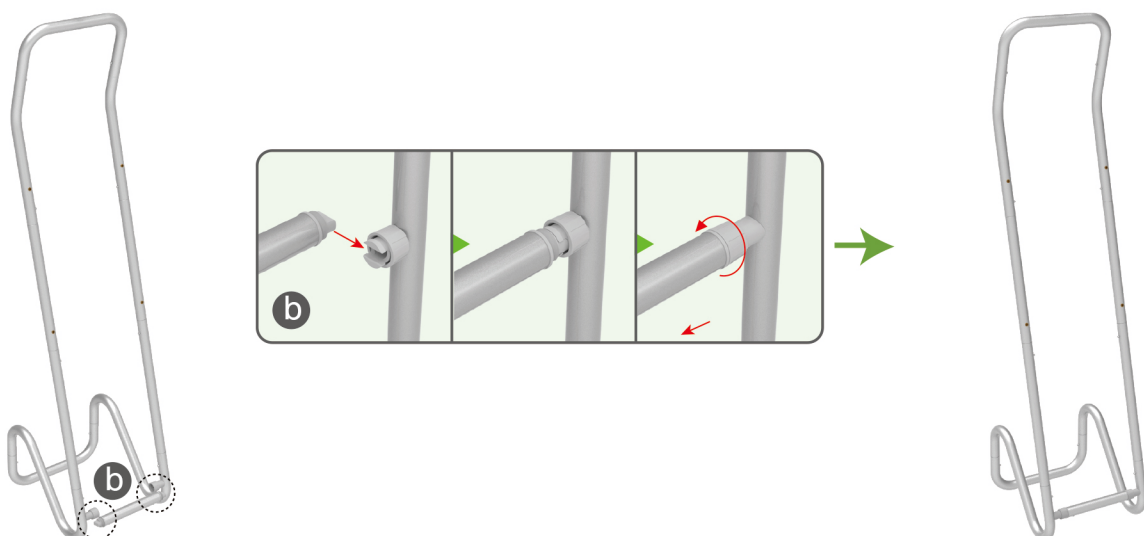
STEP 02

To connect 2 long side tubes by the corner pieces



STEP 03

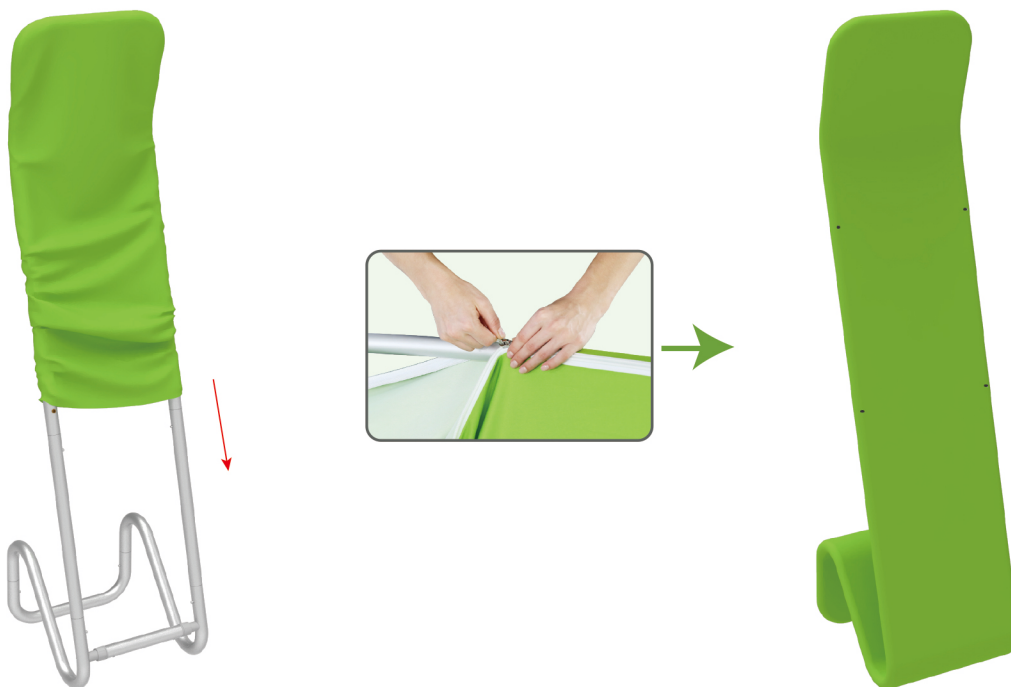
To install the cross bar according to labellings



STEPS

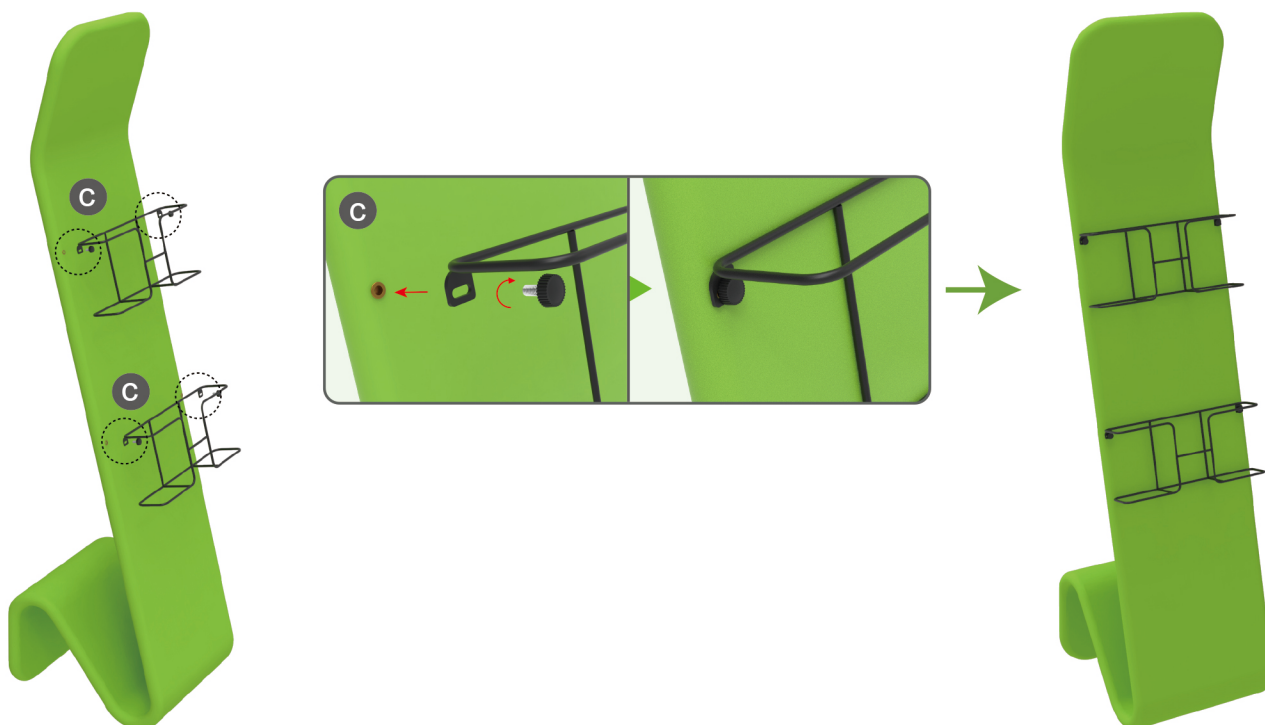
STEP 04

To Wrap up the fabric banner from top to bottom and zip up.



STEP 05

To install 2 racks by screws in position



STEPS

(1) Durable Plastic Hard Case, Aluminum Support Poles

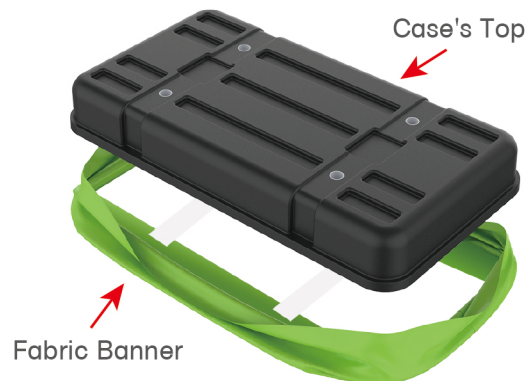


(2) Printed Graphic Fabric Banner



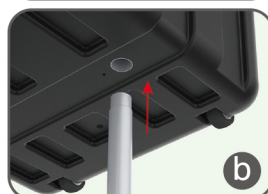
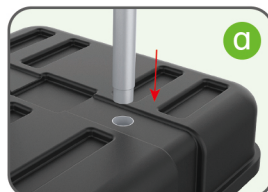
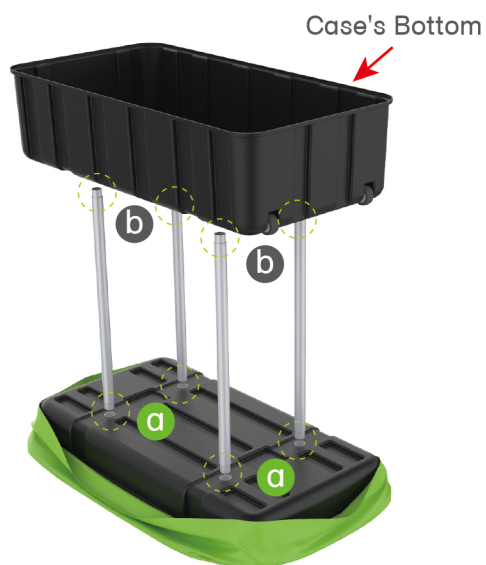
STEP 01

Put hard case's top into fabric banner.



STEP 02

Insert support poles into hard case's top & bottom.



STEPS

STEP 04

Wrap fabric banner from bottom to top & twist it to be smooth, lay hard case's intermediate panel on podium's top.

