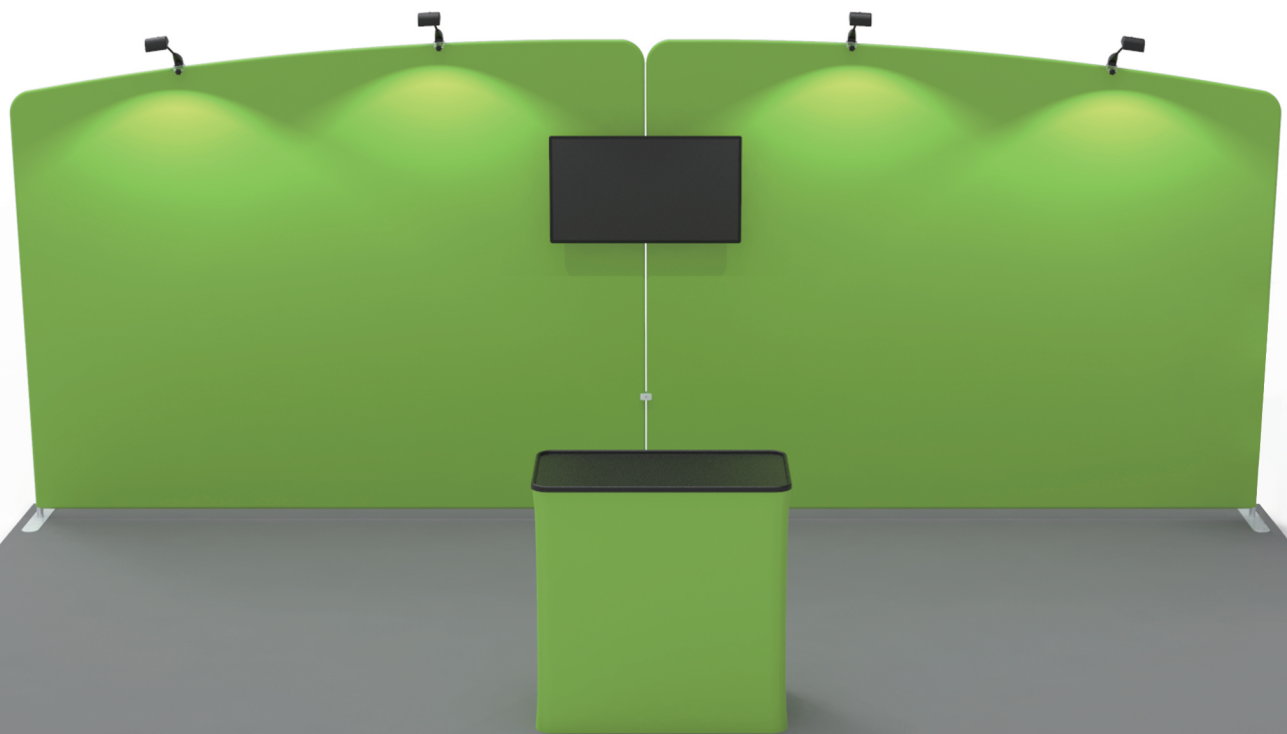


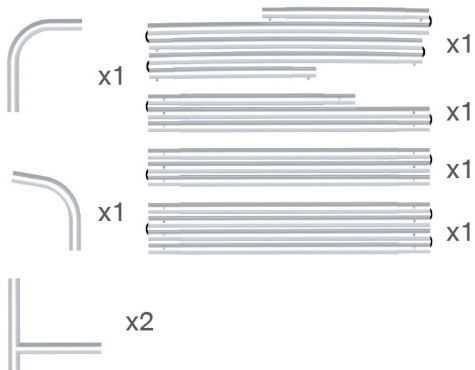
INSTRUCTION



10X20FT-BOOTH-23

STEPS

(1) Hardware

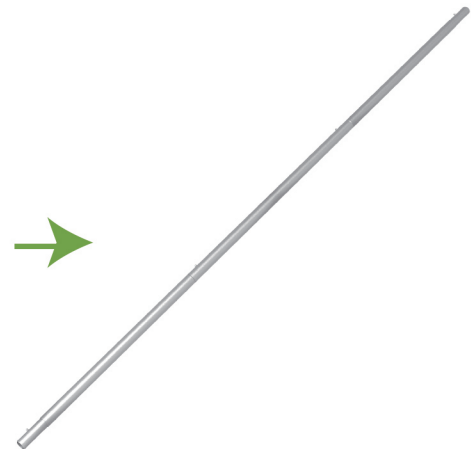
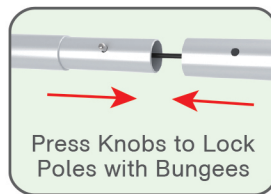


(2) Printed Graphic Fabric Banner (Optional)



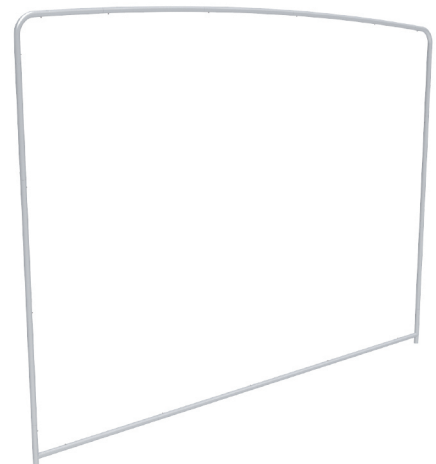
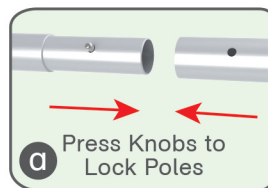
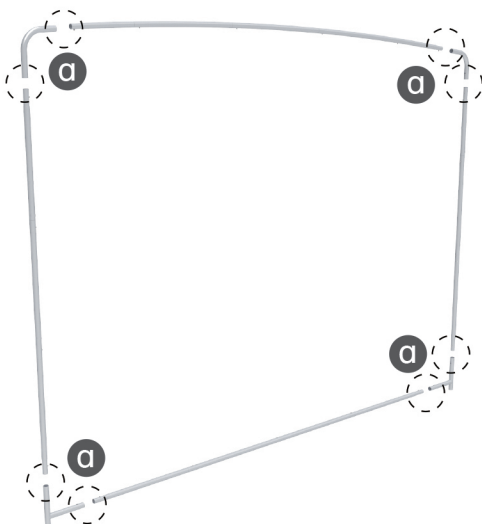
STEP 01

Connect to make long poles according to labelings.



STEP 02

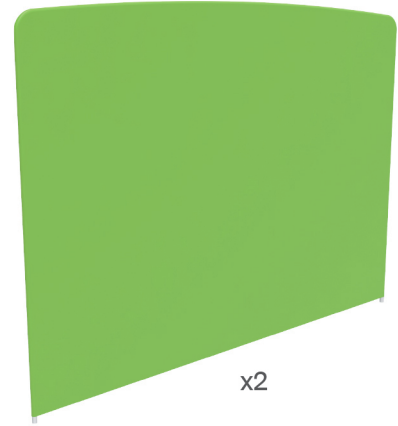
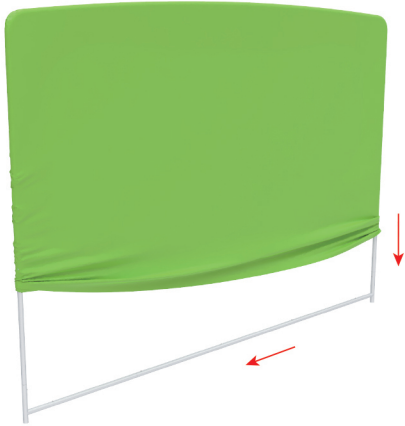
Connect long poles with corner poles according to labelings.



STEPS

STEP 03

Slide fabric banner on frame from top and zip up at bottom.

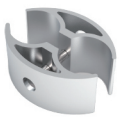


x2

Booth Set Assembly



(1) 180° C-Shaped Clip



x2

(2) LED Light & Clip



x4



x4

(3) Base

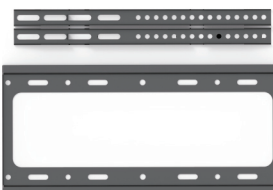


x1



x2

(4) TV Mount



x1

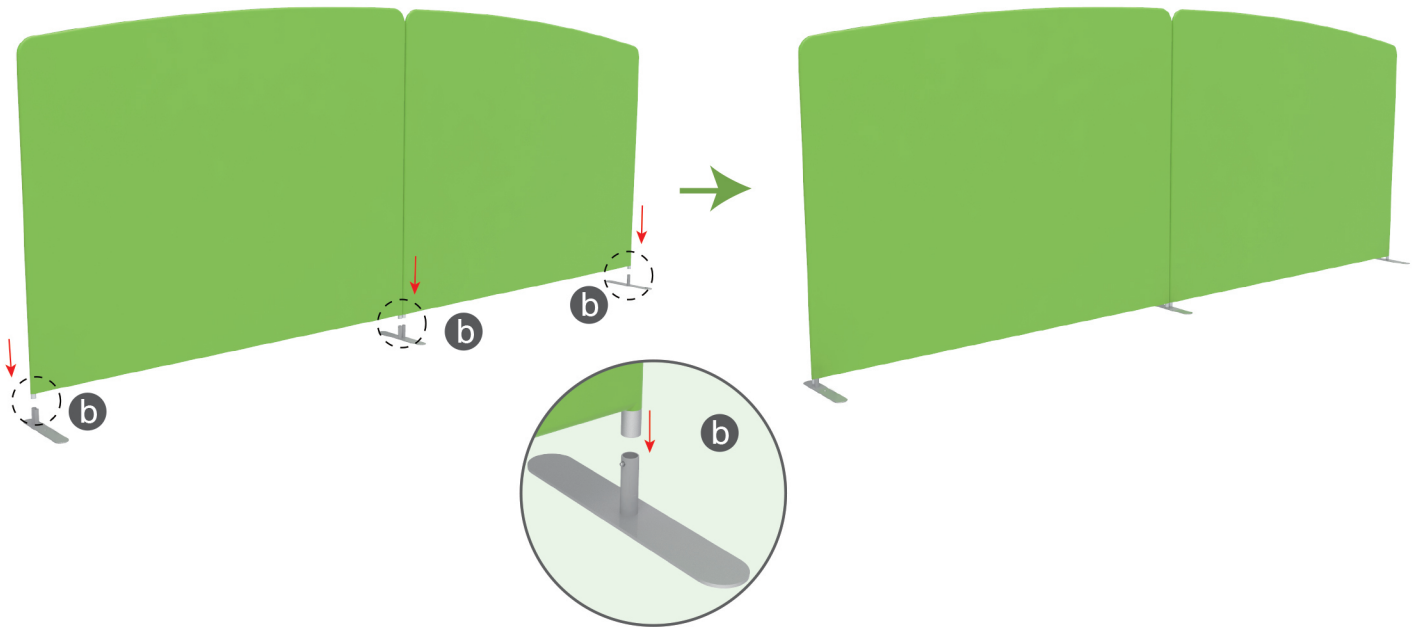
A



STEPS

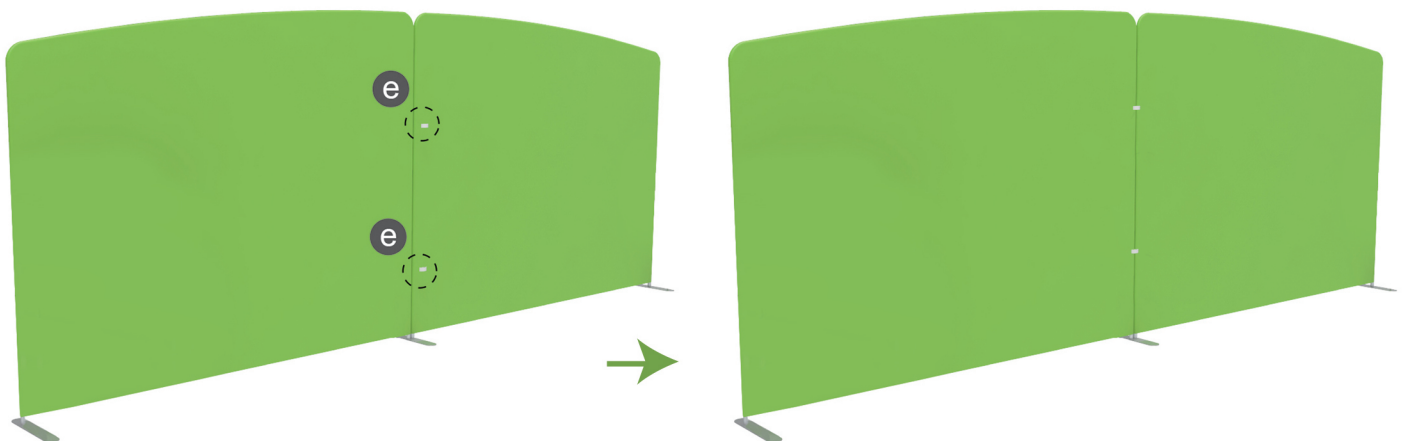
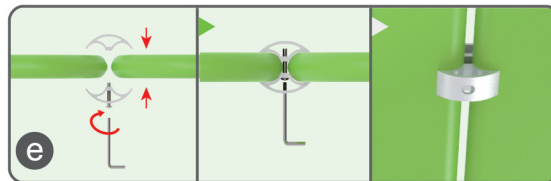
STEP 01

Insert display stands onto feet by pressing their knobs.



STEP 02

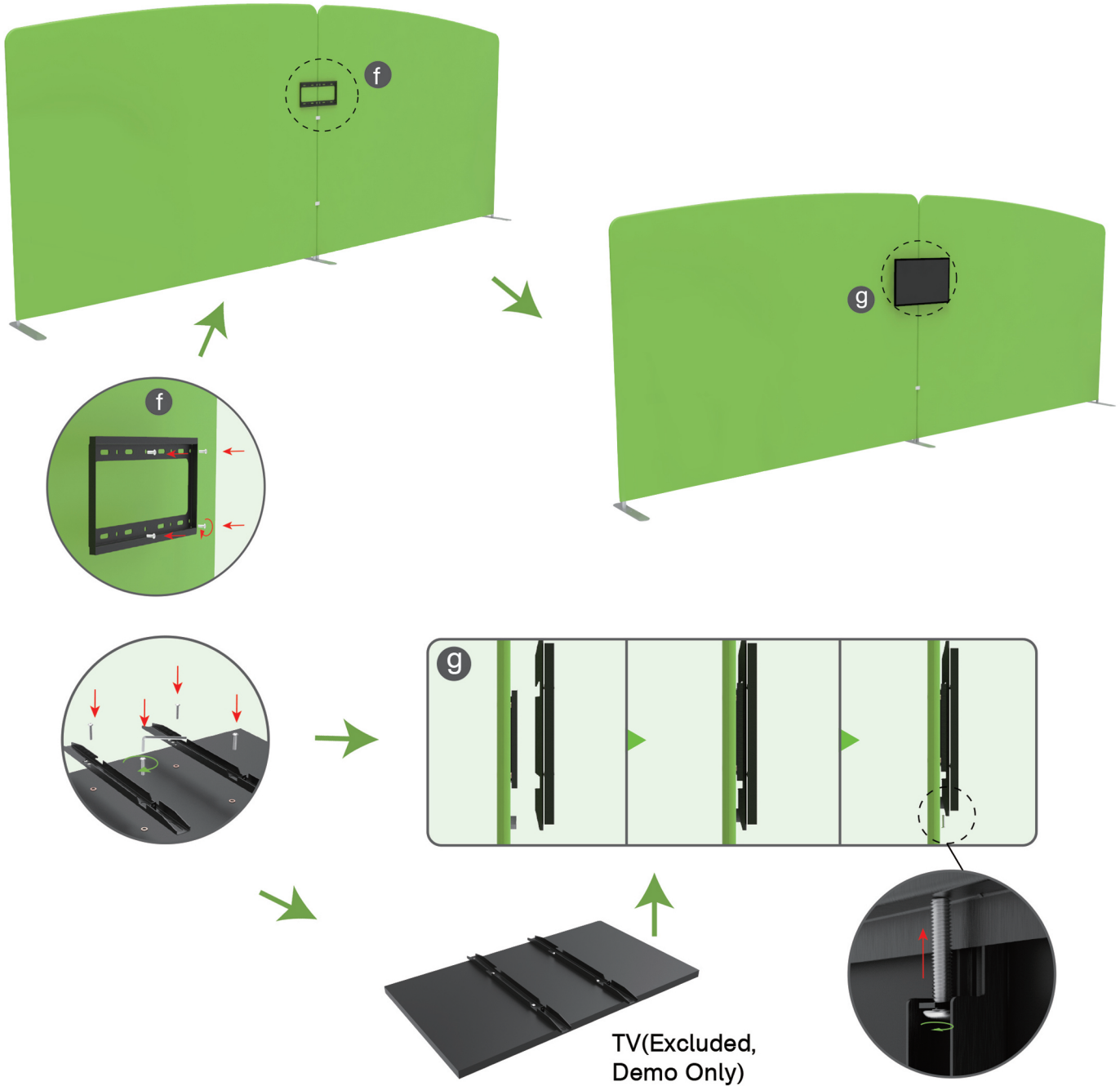
Interconnect display stands with C-shaped clips.



STEPS

STEP 03

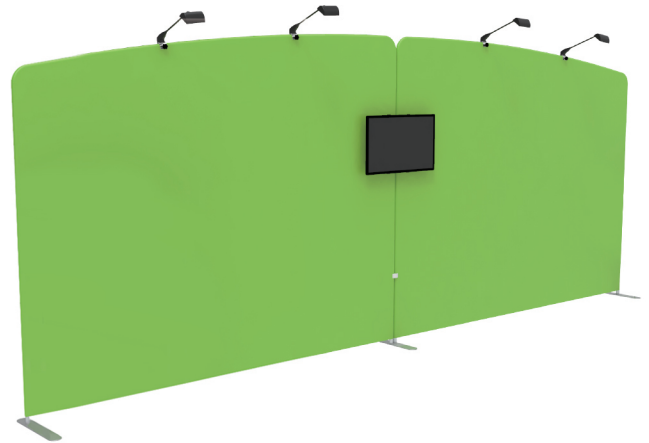
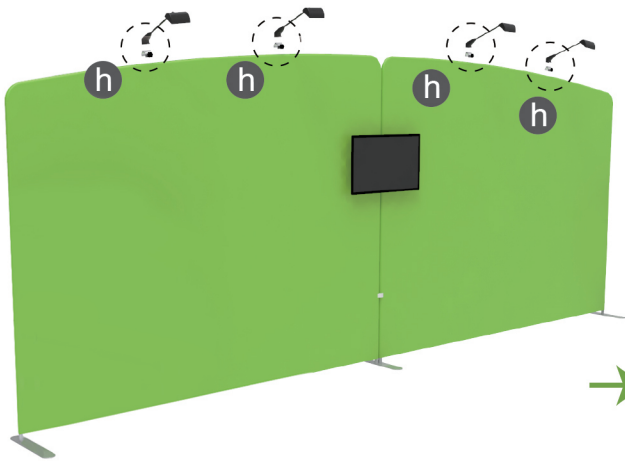
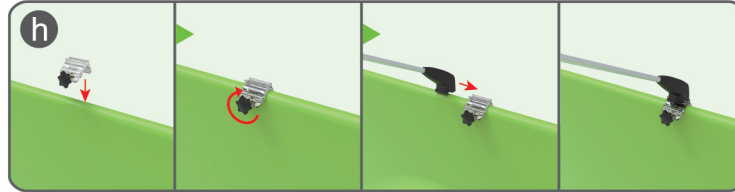
Screw TV mount with hex wrench.



STEPS

STEP 04

Screw light clips at top of display stands, slide lights onto them and adjust their direction.



STEPS

(1) Durable Plastic Hard Case, Aluminum Support Poles

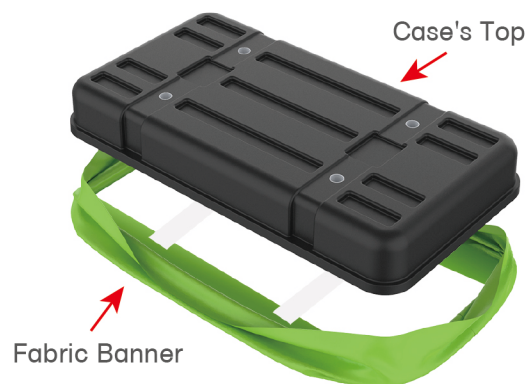


(2) Printed Graphic Fabric Banner



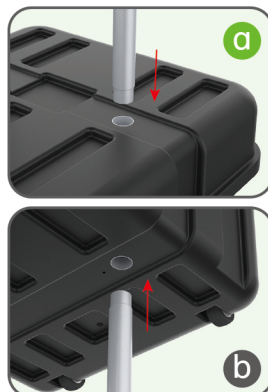
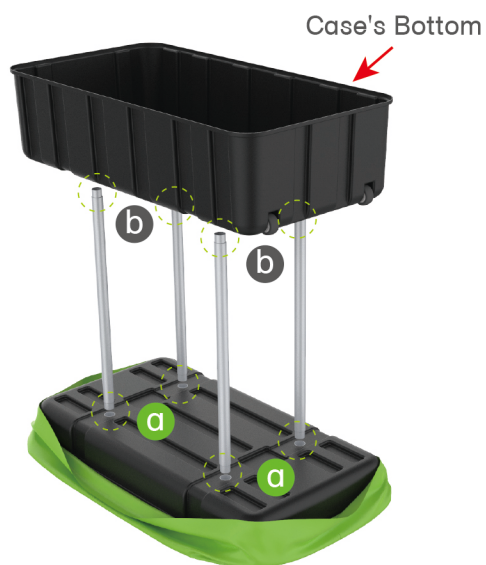
STEP 01

Put hard case's top into fabric banner.



STEP 02

Insert support poles into hard case's top & bottom.



STEPS

STEP 04

Wrap fabric banner from bottom to top & twist it to be smooth, lay hard case's intermediate panel on podium's top.

