

# INSTRUCTION



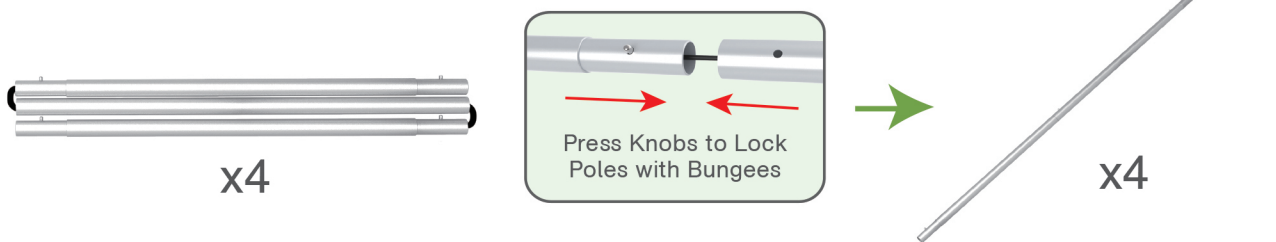
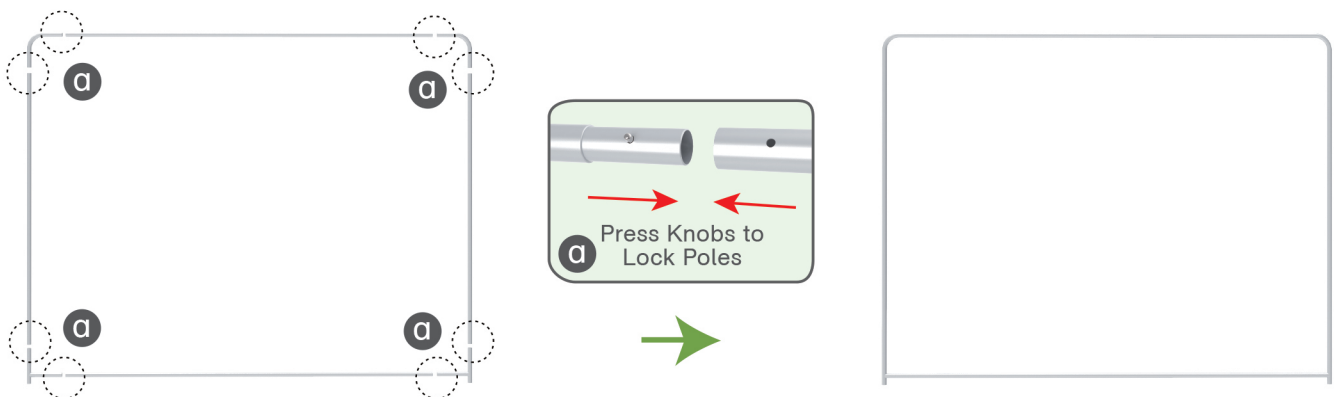
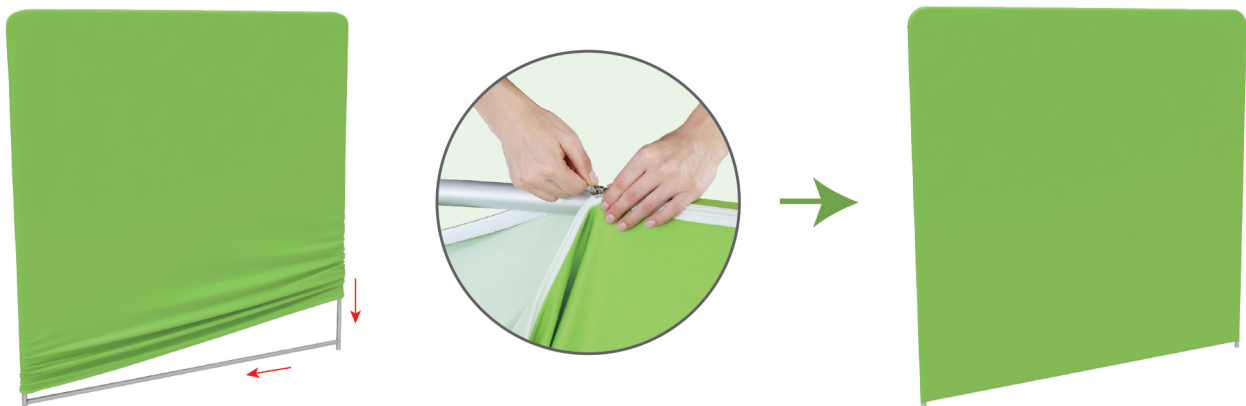
**10X10FT-BOOTH-31**

## STEPS

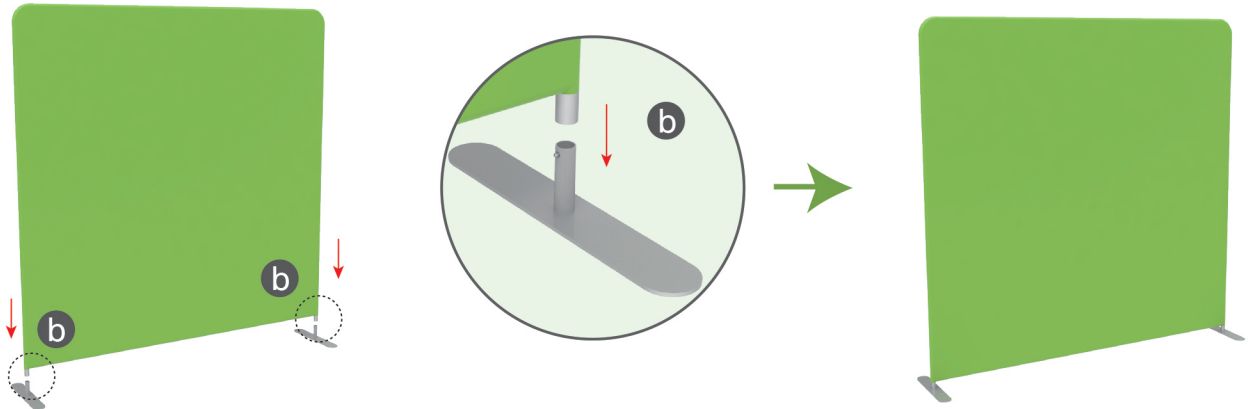
(1) Hardware



(2) Printed Graphic Fabric Banner (Optional)

**STEP 01** Connect to make long poles according to labelings.**STEP 02** Connect long poles with corner poles according to labelings.**STEP 03** Slide fabric banner on frame from top and zip up at bottom.

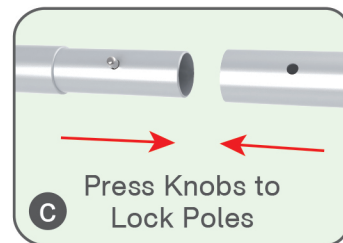
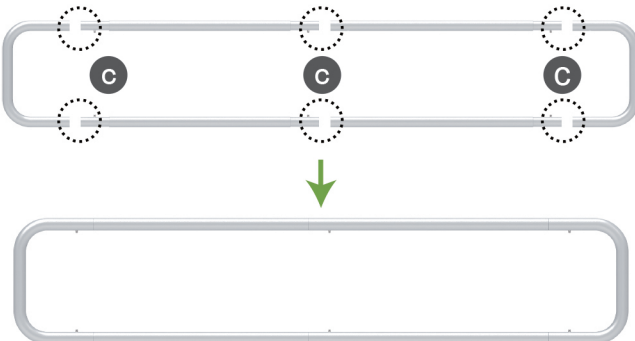
## STEPS

**STEP 04** To assemble the stand feet in position

(1) Hardware

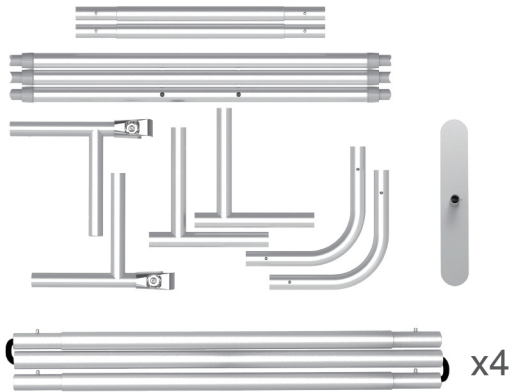


(2) Printed Graphic Fabric Banner (Optional)

**STEP 01** Connect poles according to labelings.**STEP 02** Slide fabric banner on frame from left and zip up at right.

## STEPS

(1) Hardware

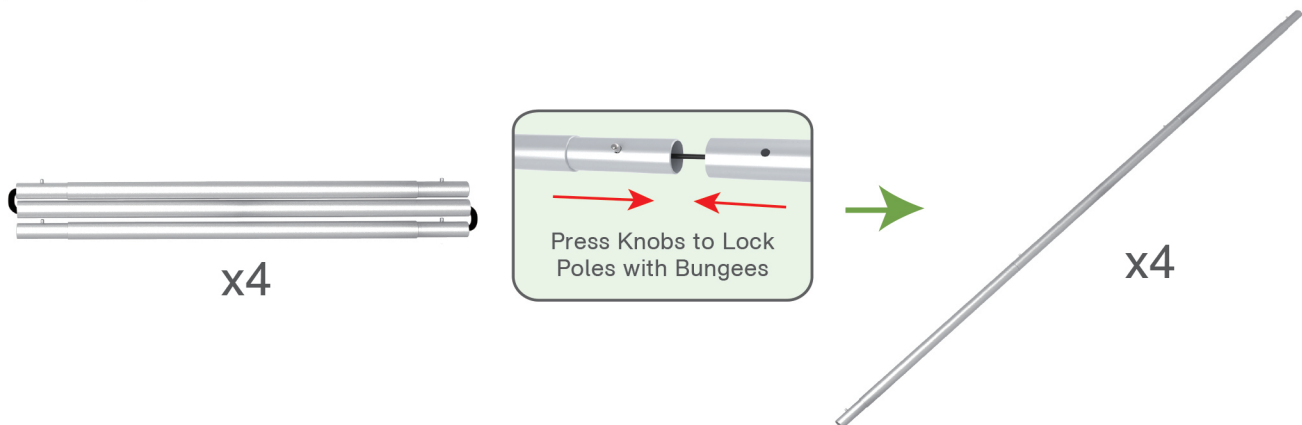


(2) Printed Graphic Fabric Banner (Optional)



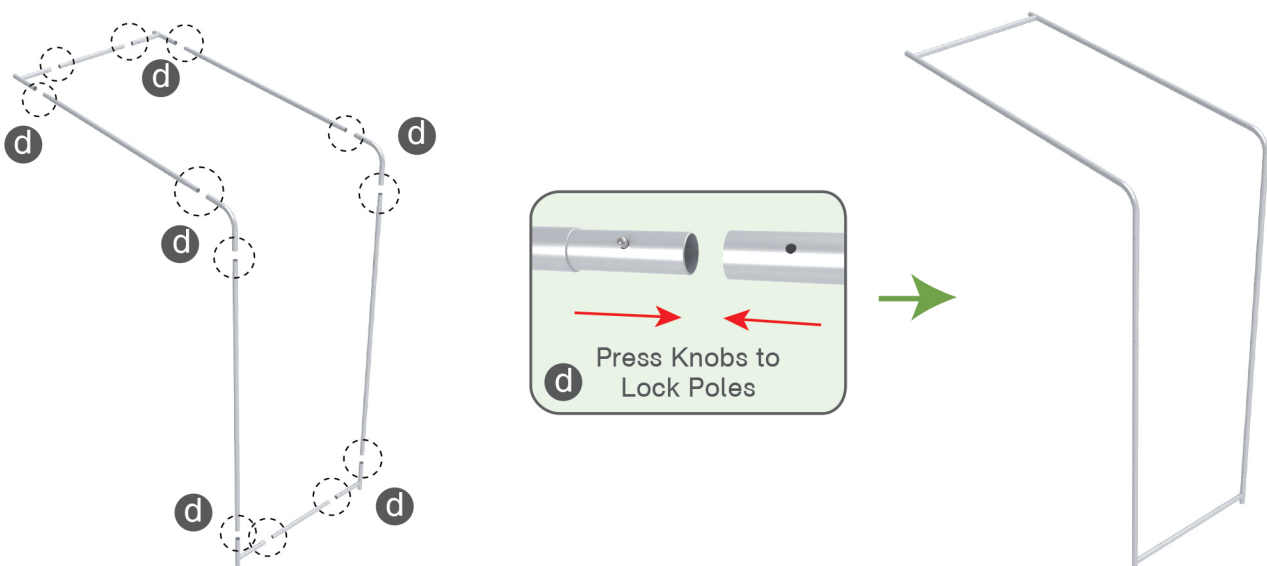
## STEP 01

Connect to make long poles according to labelings.



## STEP 02

Connect long poles with corner poles according to labelings.

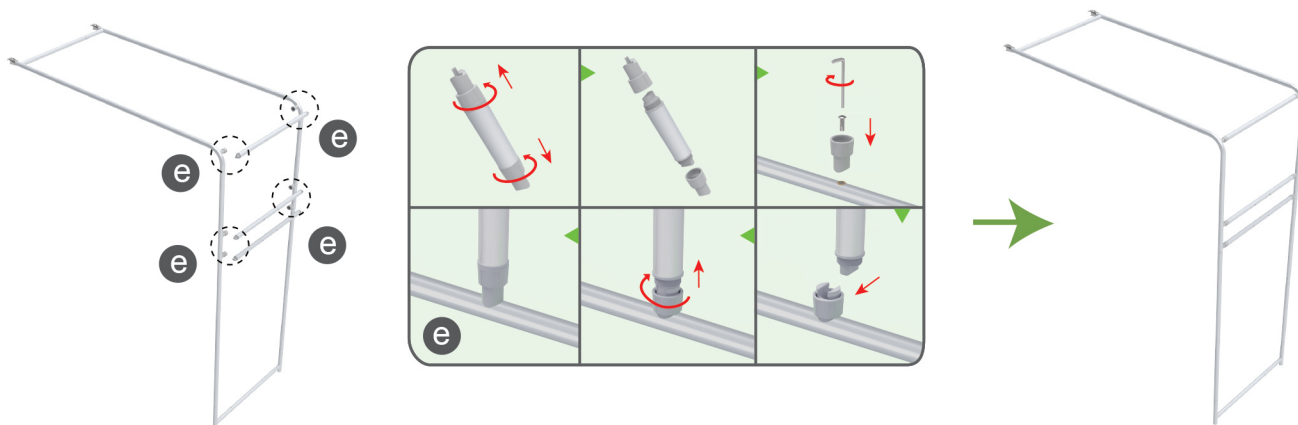




## STEPS

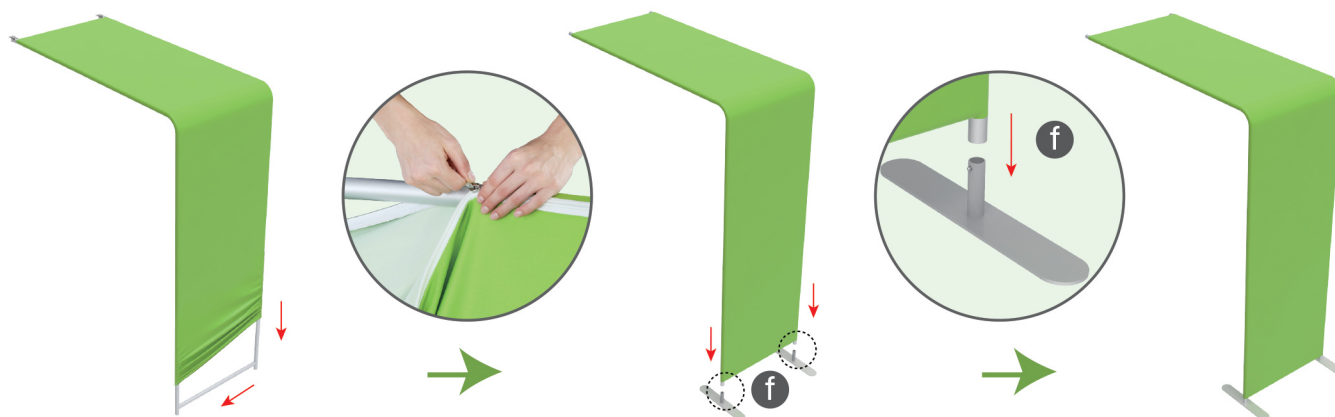
## STEP 03

Connect support poles onto frame.

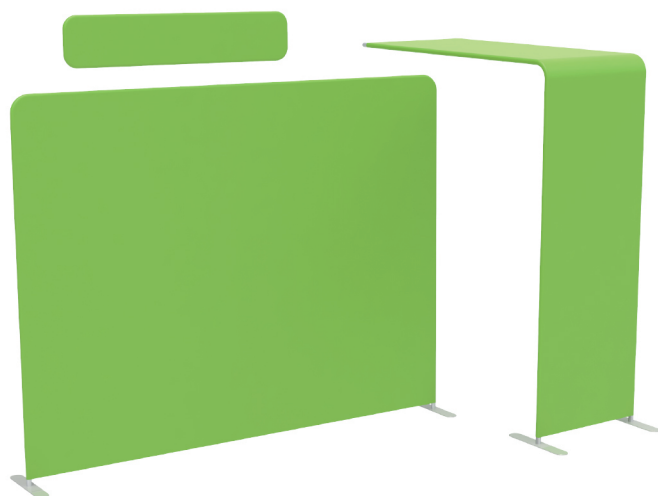


## STEP 04

Slide fabric banner on frame from top and zip up at bottom, insert display stands onto feet by pressing their knobs.



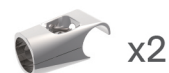
## Booth Set Assembly



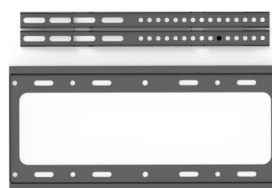
(1) 180° C-Shaped Clip



(2) Arm Clip



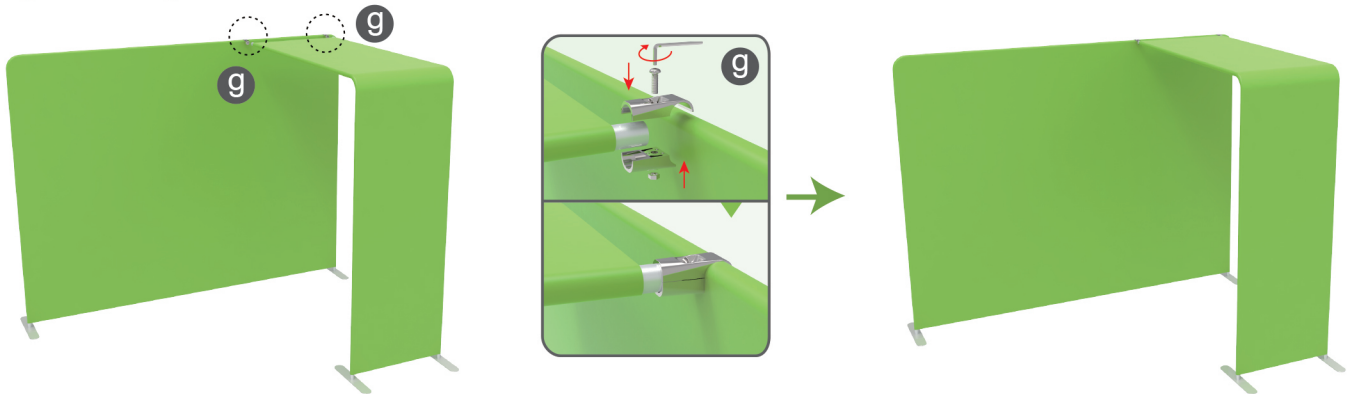
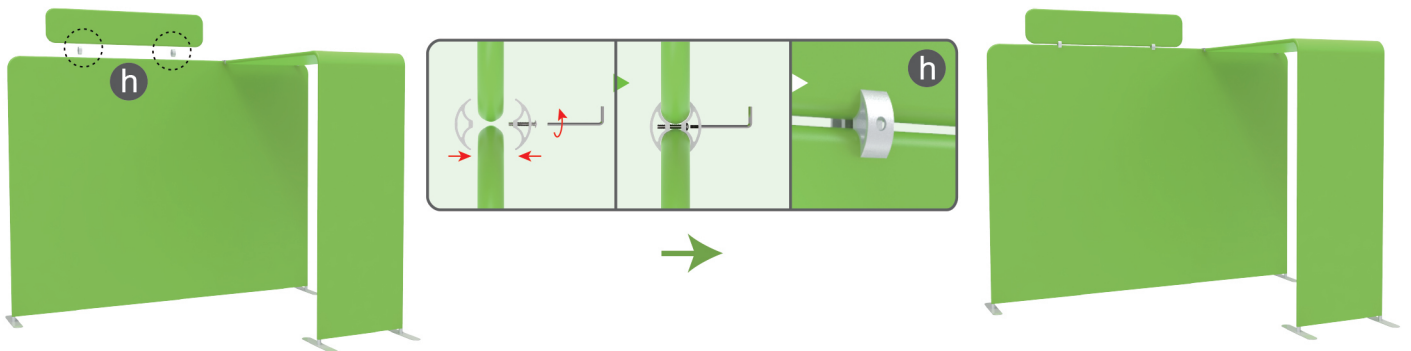
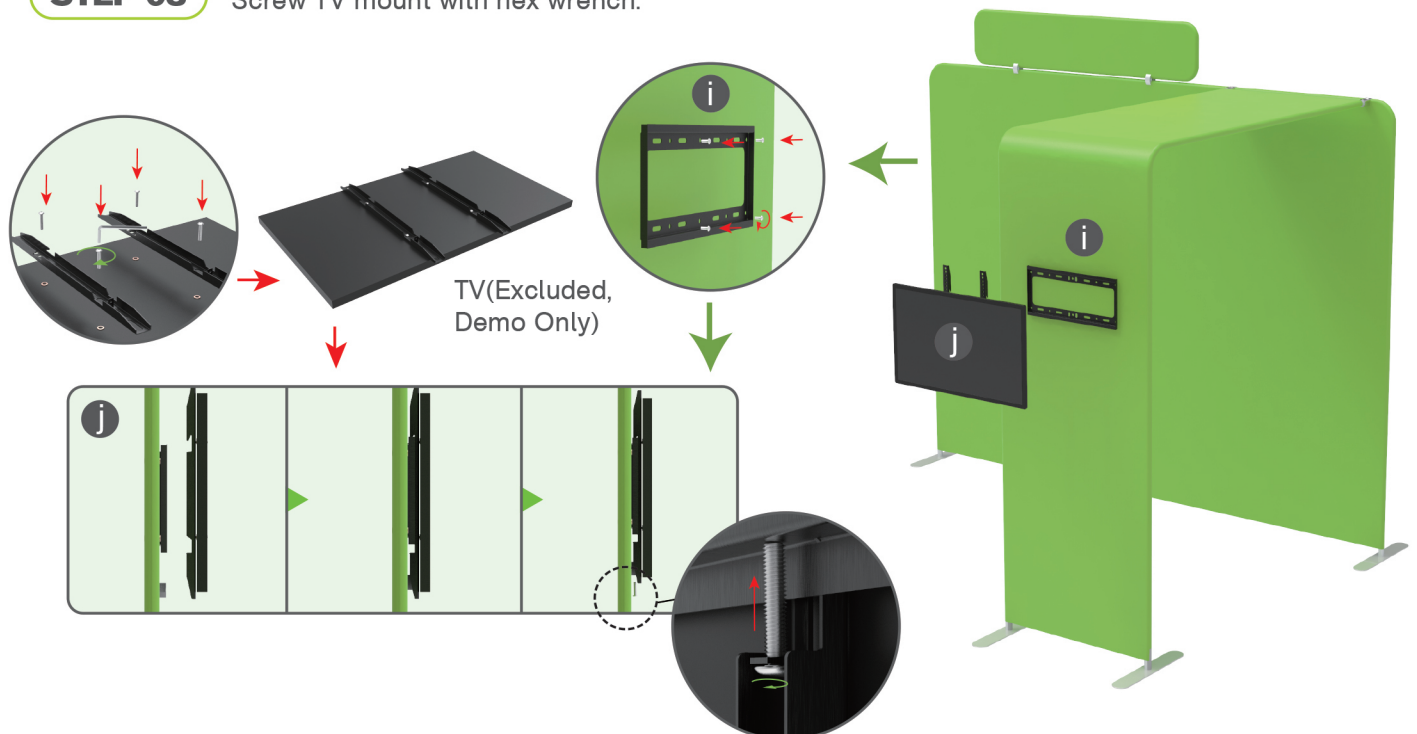
(3) TV Mount & Screw



(4) LED Light & Clip



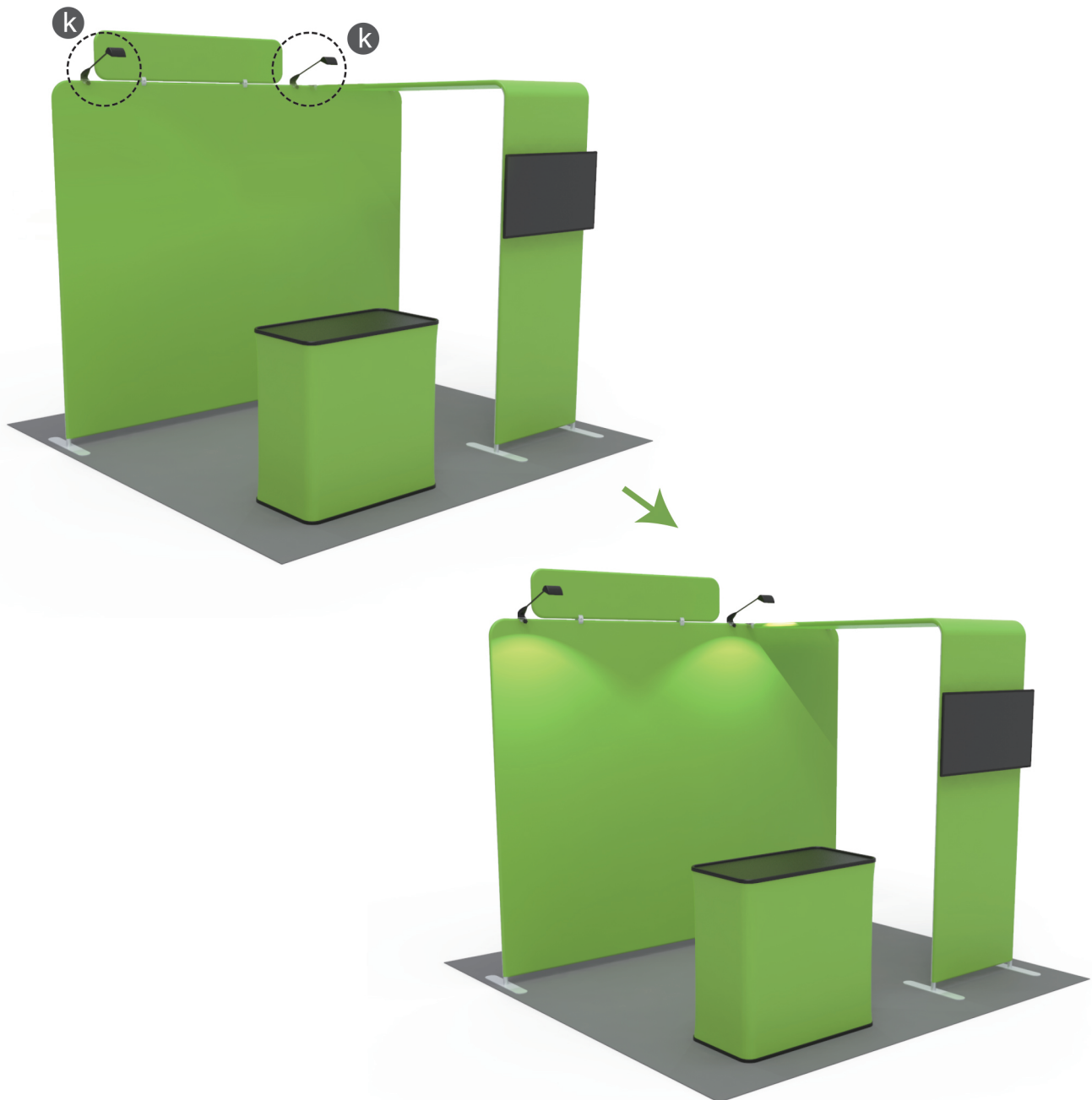
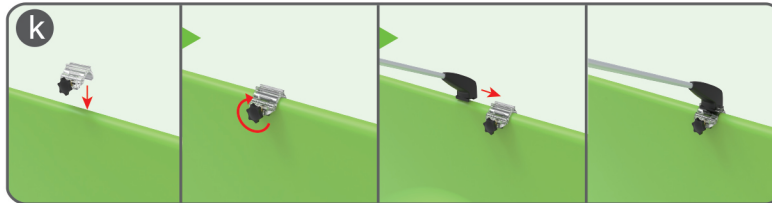
## STEPS

**STEP 01** Connect display stands with arm clips.**STEP 02** Interconnect display stands with C-shaped clips.**STEP 03** Screw TV mount with hex wrench.

## STEPS

## STEP 04

Screw light clips at top of display stands, slide lights onto them and adjust their direction.



10X10FT-BOOTH-31

## STEPS

(1) Durable Plastic Hard Case, Aluminum Support Poles

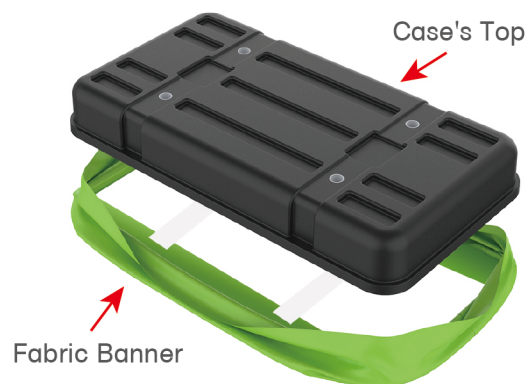


(2) Printed Graphic Fabric Banner



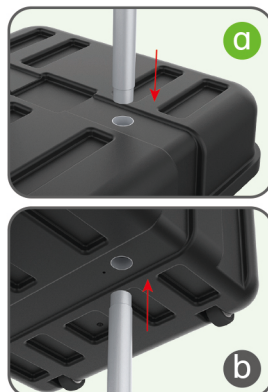
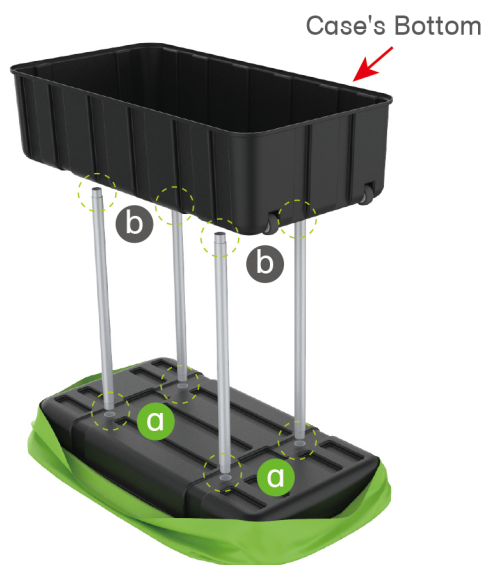
## STEP 01

Put hard case's top into fabric banner.



## STEP 02

Insert support poles into hard case's top &amp; bottom.





## STEPS

## STEP 04

Wrap fabric banner from bottom to top & twist it to be smooth, lay hard case's intermediate panel on podium's top.

