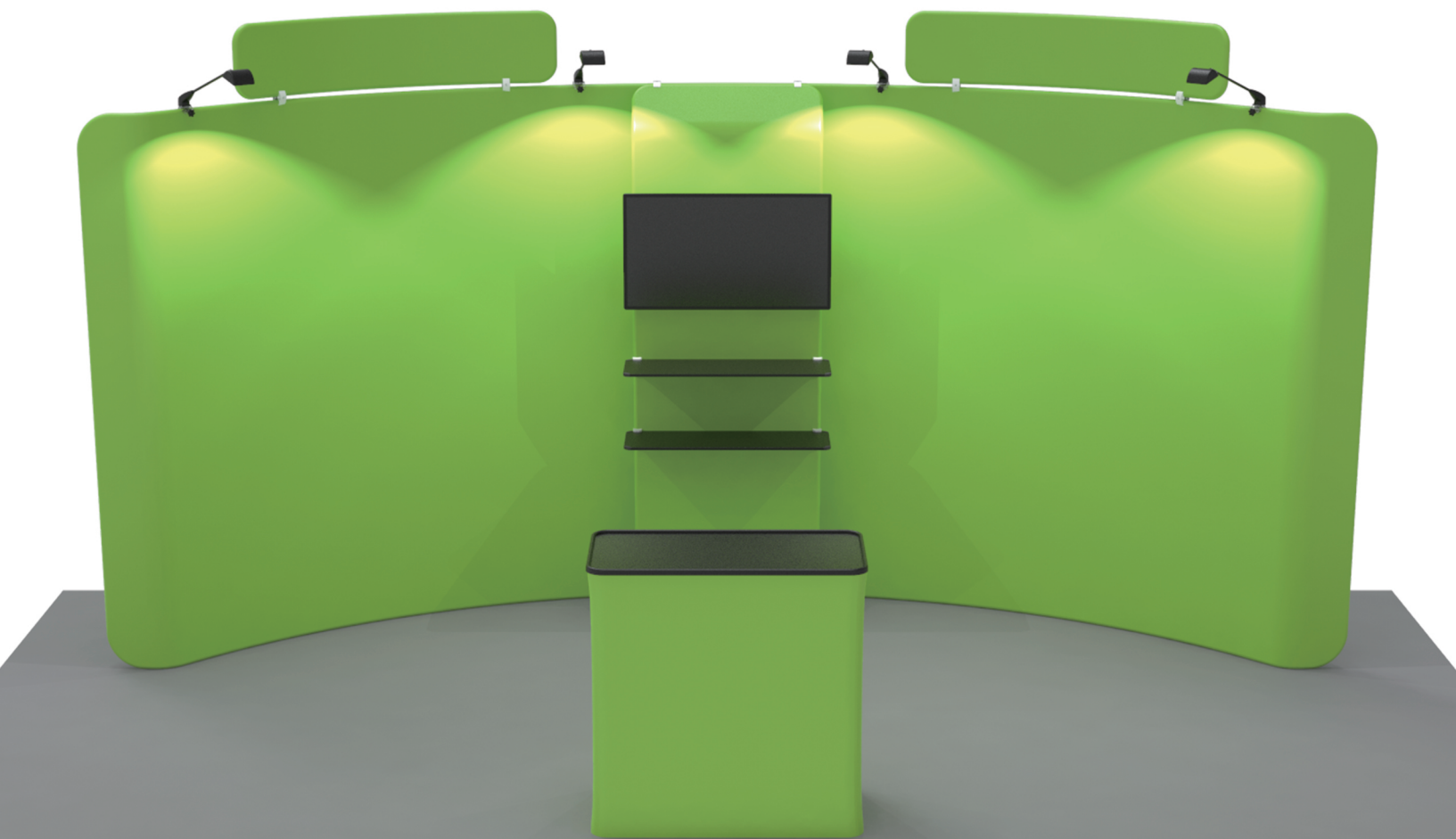


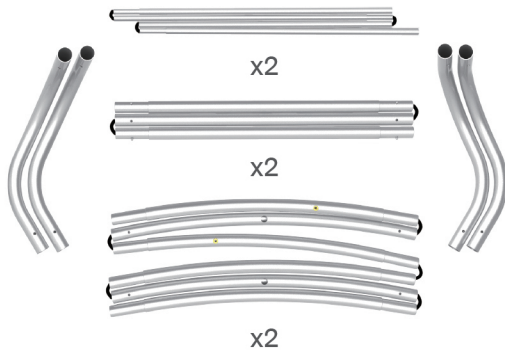
INSTRUCTION



TF-SB-10X20-59

STEPS

(1) Hardware



(2) Printed Graphic Fabric Banner (Optional)

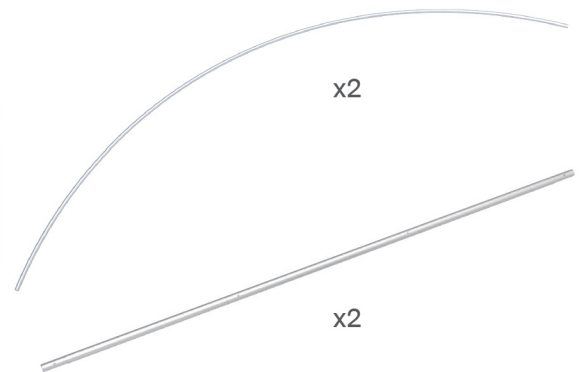
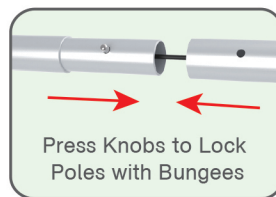
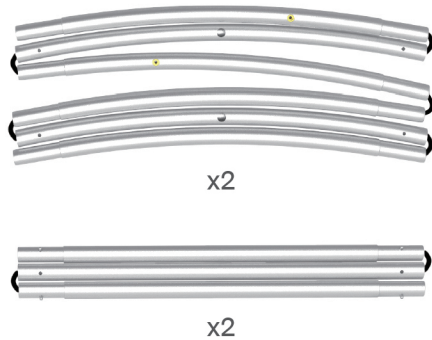


(3) Light Clips



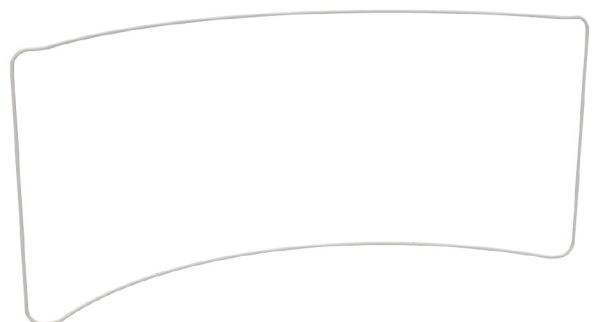
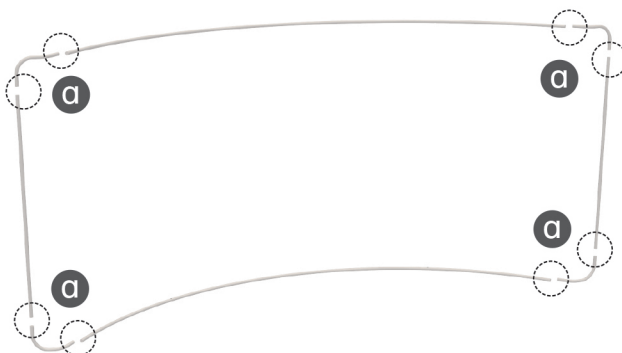
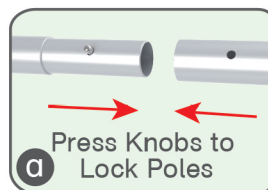
STEP 01

Connect to make long poles according to labelings.



STEP 02

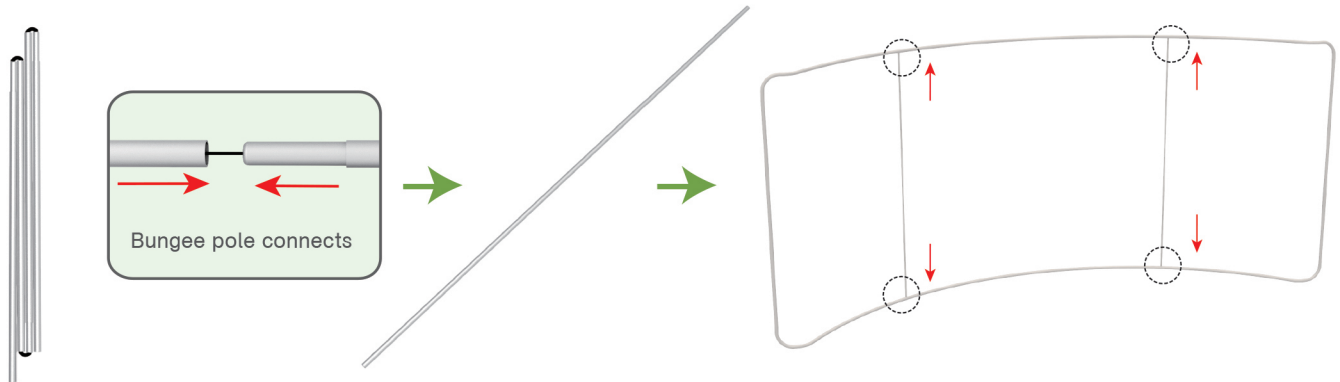
Connect long poles with corner poles according to labelings.



STEPS

STEP 03

Connect poles with bungees for making middle support pole to insert in position.



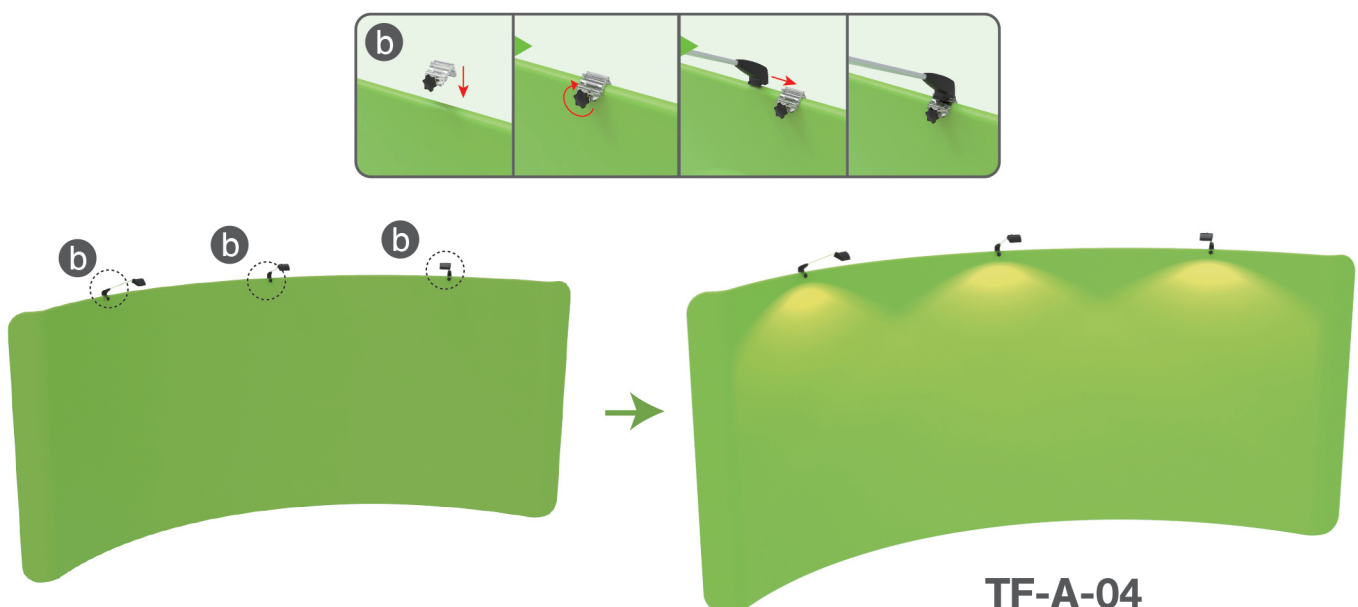
STEP 04

Slide fabric banner on frame from top and zip up at bottom.



STEP 05

Screw light clips at top of display stands, slide lights onto them and adjust their direction.



STEPS

(1) Hardware

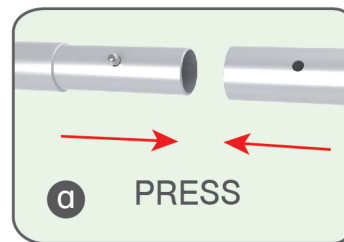
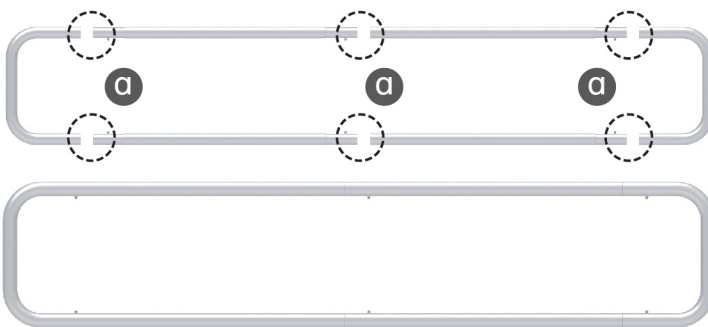


(2) Graphic printing fabric banner



STEP 01

To connect the poles according to the labellings

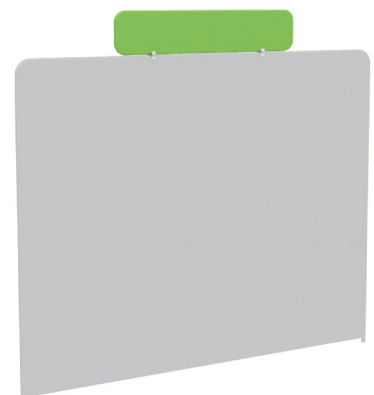
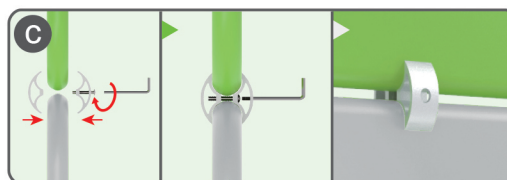
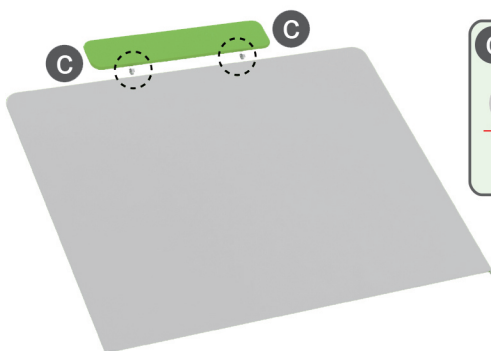


STEP 02

To wrap up the fabric banner from side to side and zip up

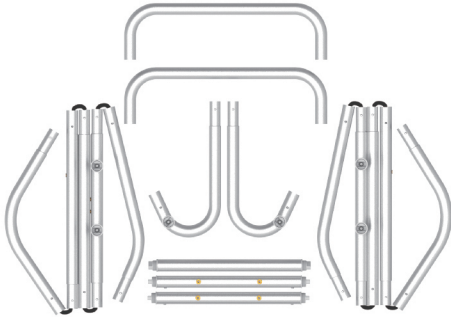


STEP 03 Interconnect display stands with C-shaped clips.



★ One Tool (Hex Wrench) **STEPS**

(1) Hardware



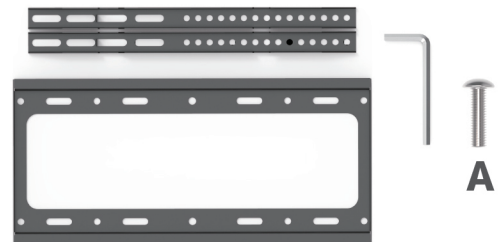
(2) Printed Graphic Fabric Banner (Optional)



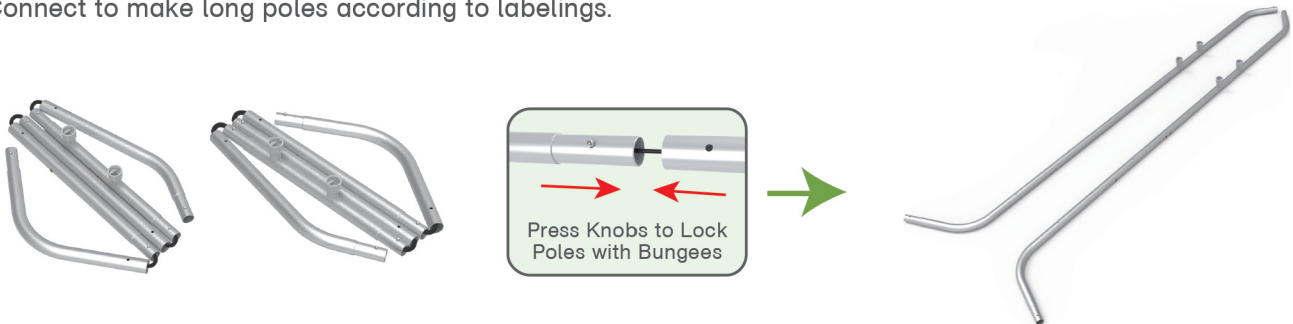
(3) Shelf & Bracket



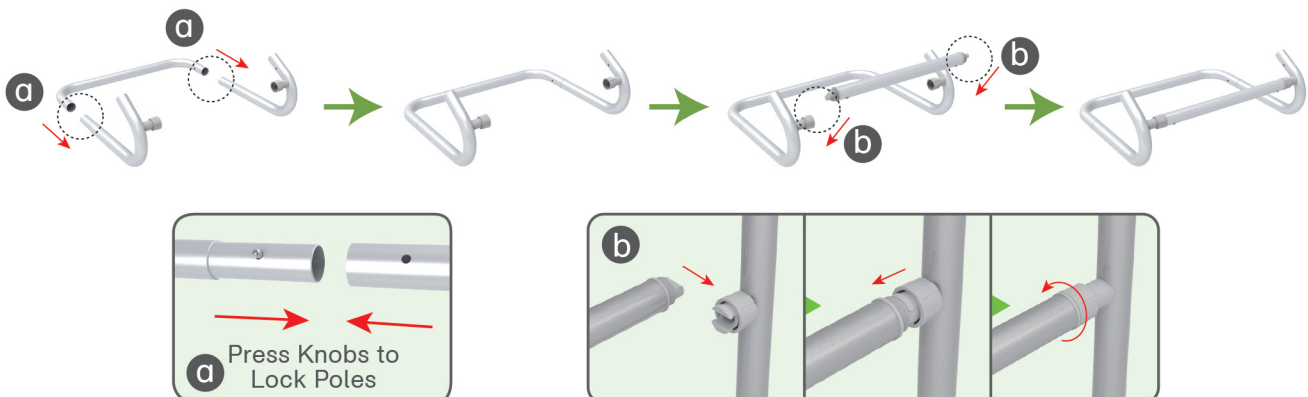
(4) TV Mount & Screw

**STEP 01**

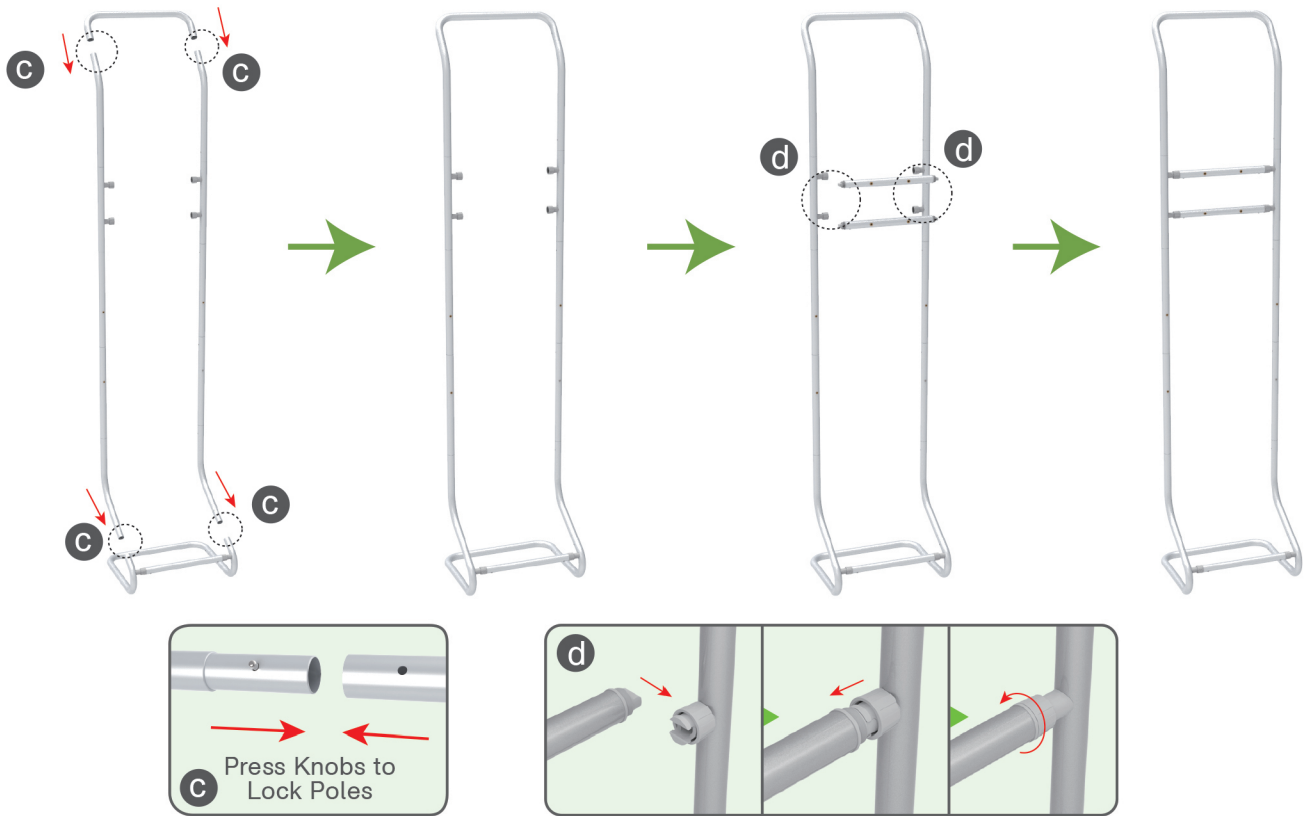
Connect to make long poles according to labelings.

**STEP 02**

Connect long poles with corner poles according to labelings, install cross bars in position.

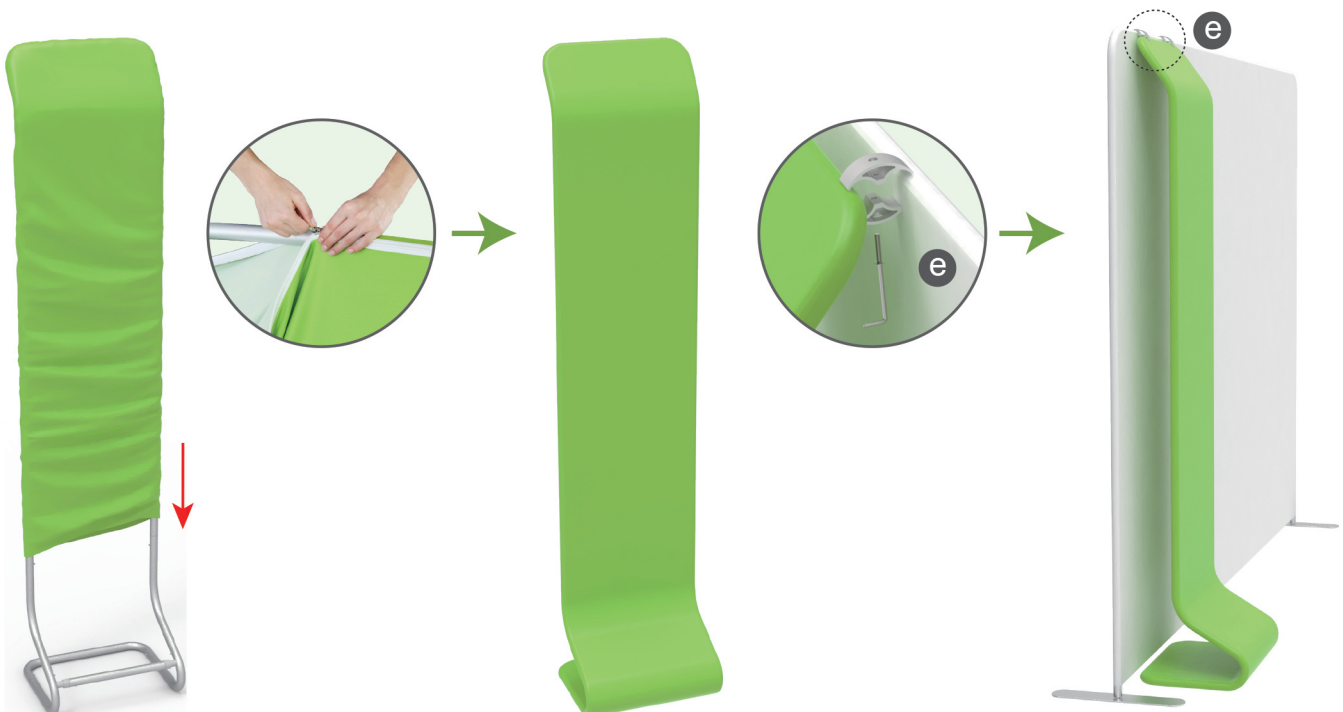


STEPS



STEP 03

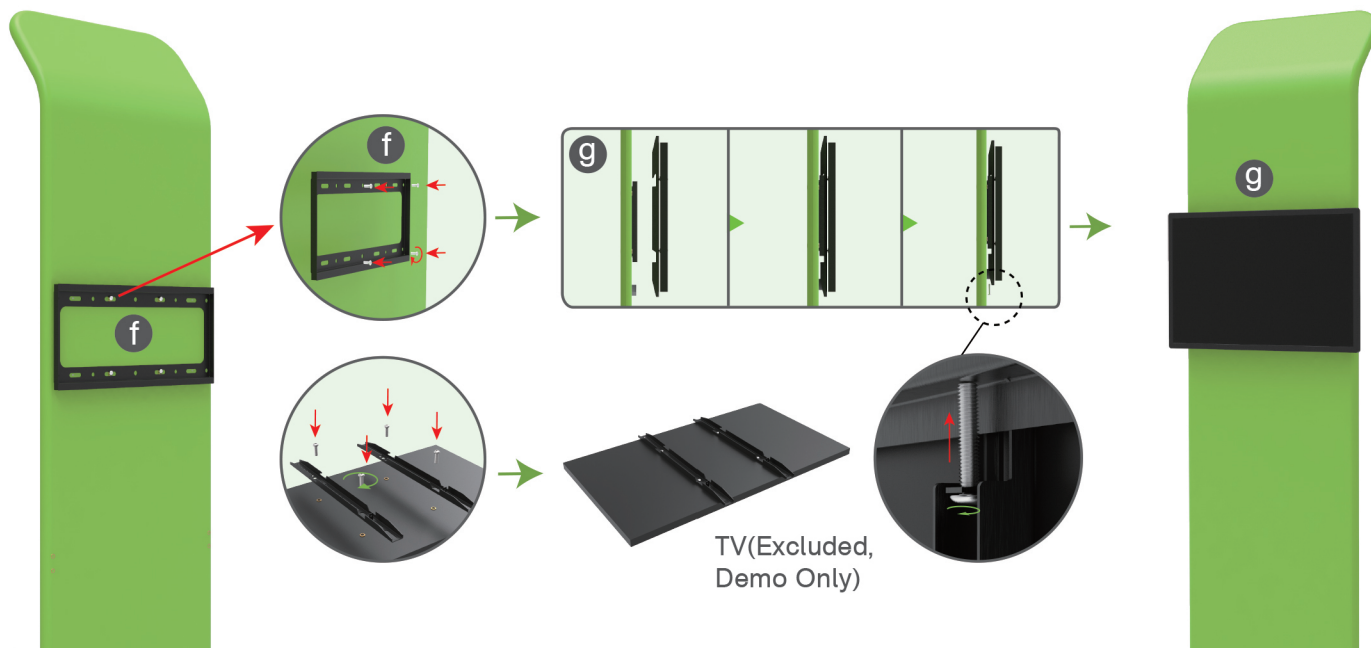
Slide fabric banner on frame from top and zip up at bottom, interconnect display stands with C-shaped clips.



STEPS

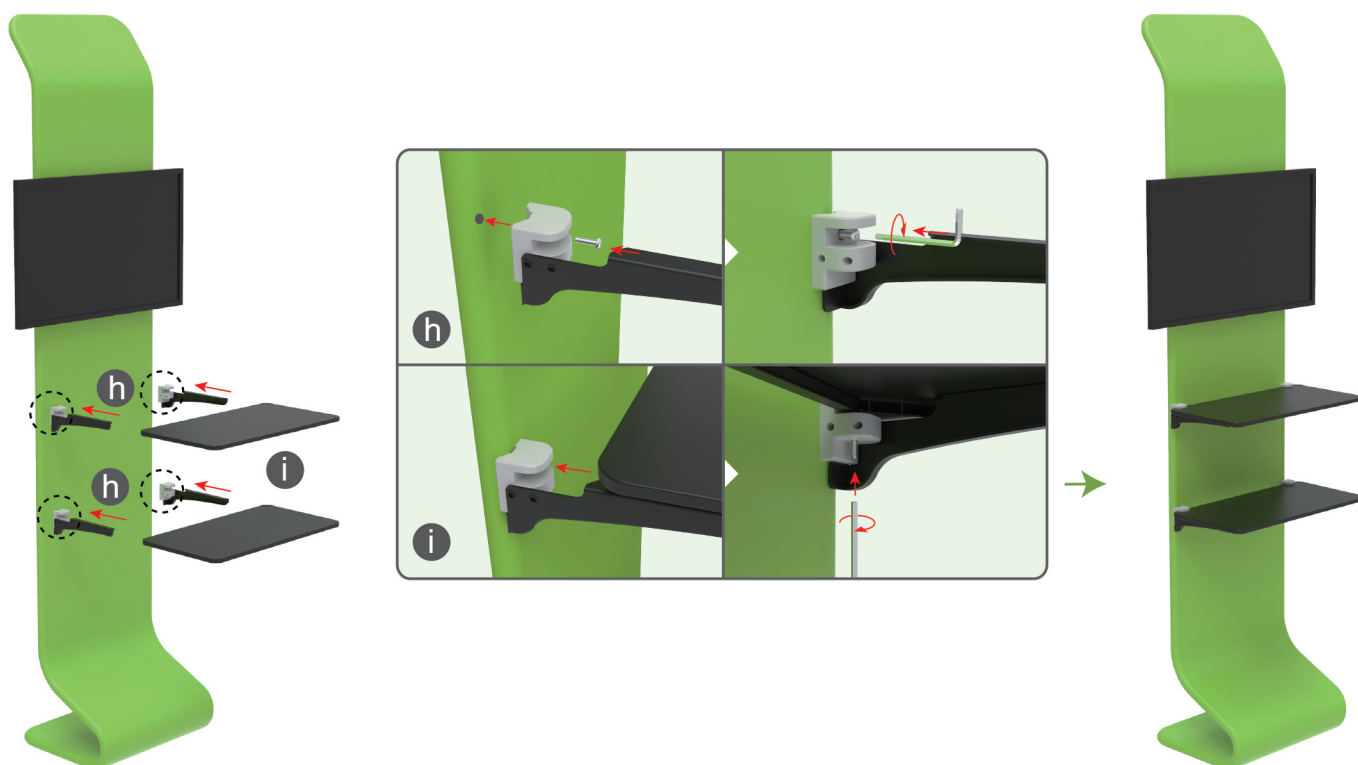
STEP 04

Screw TV mount onto display stand & support brackets onto TV's back with hex wrench, hang TV onto mount & screw.



STEP 05

Screw brackets onto display stand with hex wrench, insert shelves into slots.



STEPS

(1) Durable Plastic Hard Case, Aluminum Support Poles

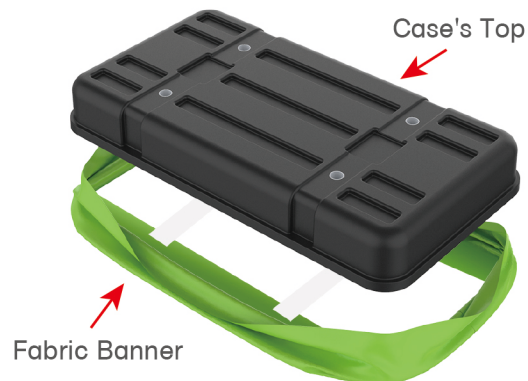


(2) Printed Graphic Fabric Banner



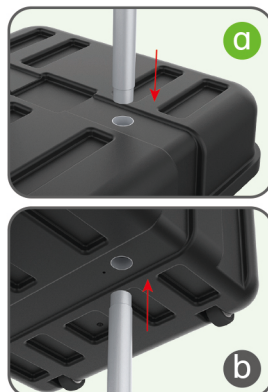
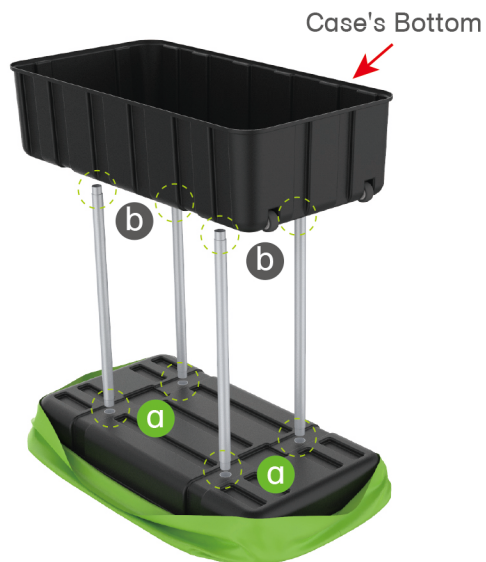
STEP 01

Put hard case's top into fabric banner.



STEP 02

Insert support poles into hard case's top & bottom.



STEPS

STEP 04

Wrap fabric banner from bottom to top & twist it to be smooth, lay hard case's intermediate panel on podium's top.

