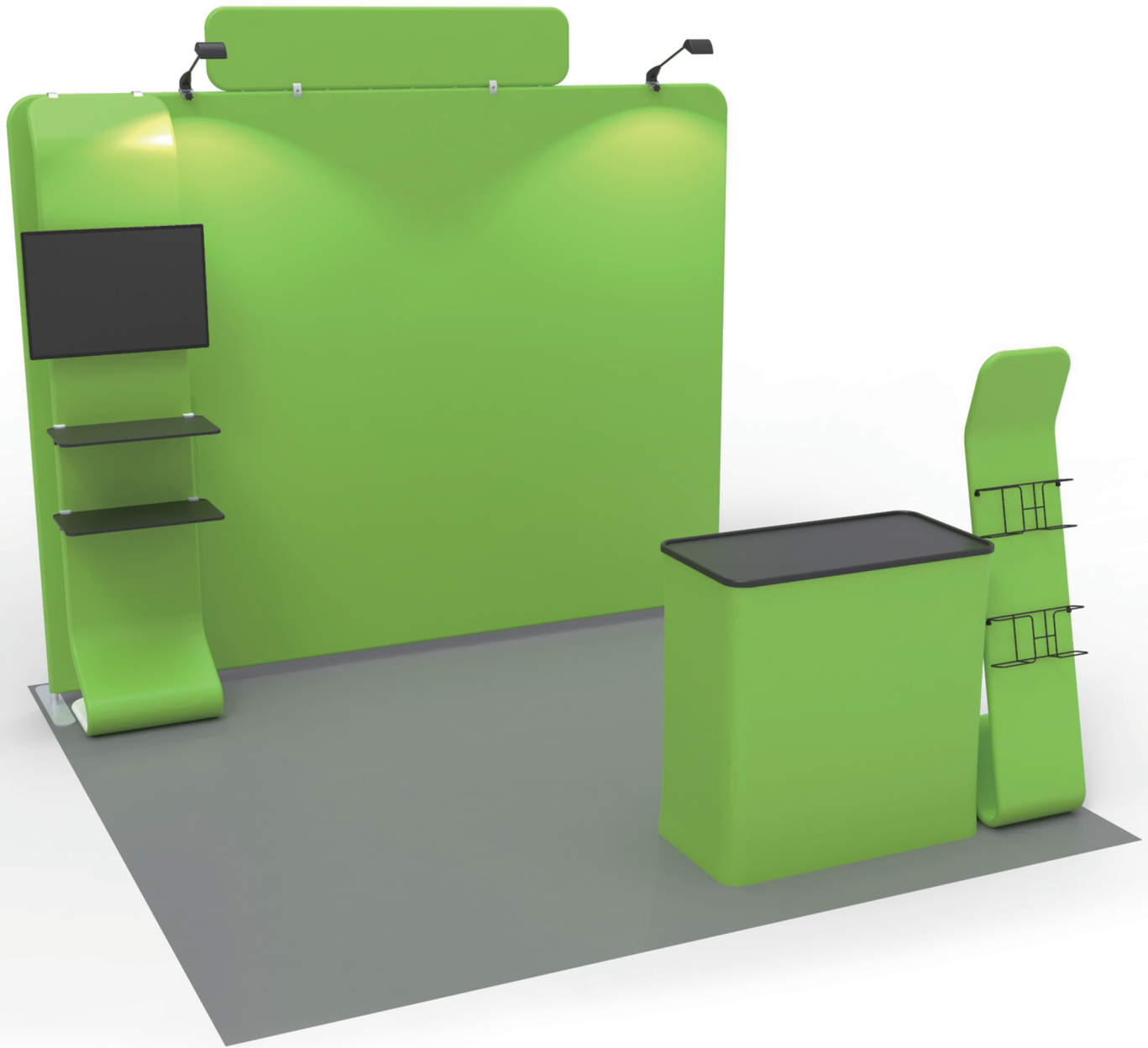


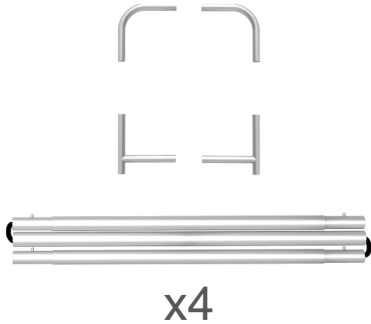
# INSTRUCTION



**10X10FT-BOOTH-F**

## STEPS

(1) Hardware

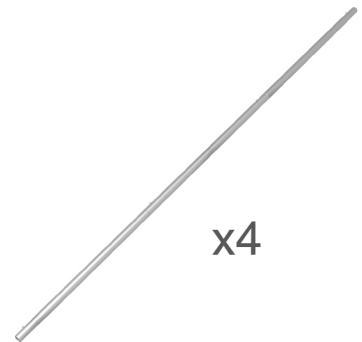
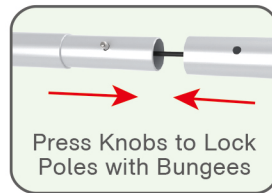
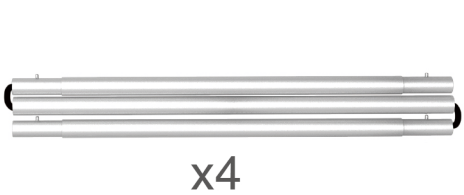


(2) Printed Graphic Fabric Banner (Optional)



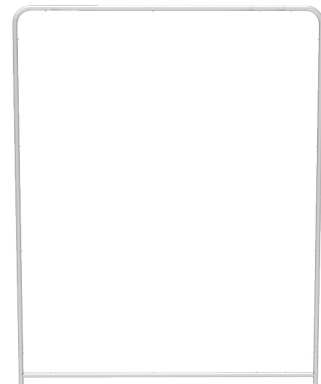
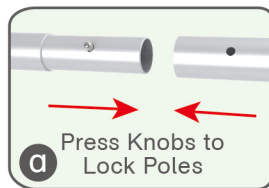
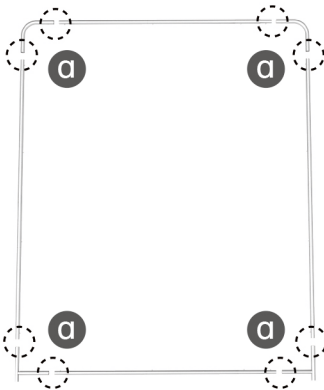
## STEP 01

Connect to make long poles according to labelings.



## STEP 02

Connect long poles with corner poles according to labelings.



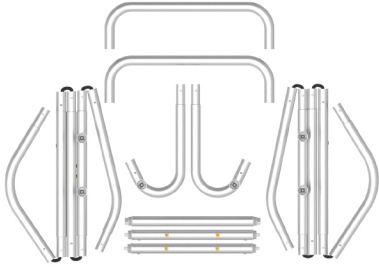
## STEP 03

Slide fabric banner on frame from top and zip up at bottom.



## STEPS

(1) Hardware

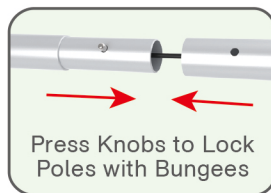


(2) Printed Graphic Fabric Banner (Optional)



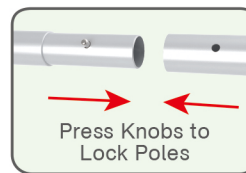
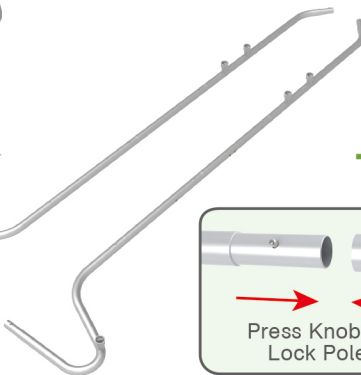
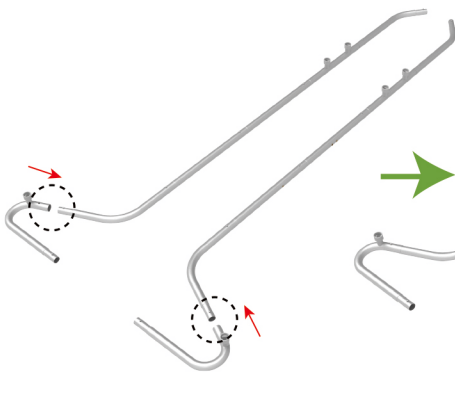
## STEP 01

Connect to make long poles according to labelings.



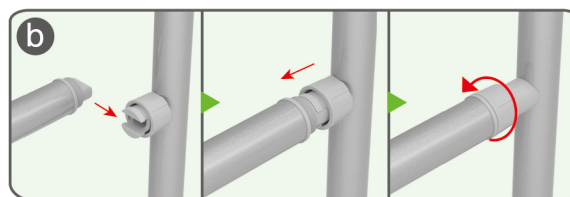
## STEP 02

Connect long poles with corner poles according to labelings.



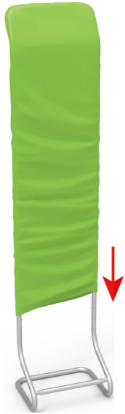
## STEP 03

Install cross bars in position.



★ One Tool (Hex Wrench) 

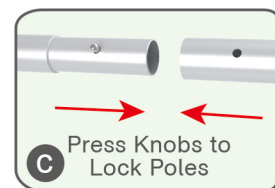
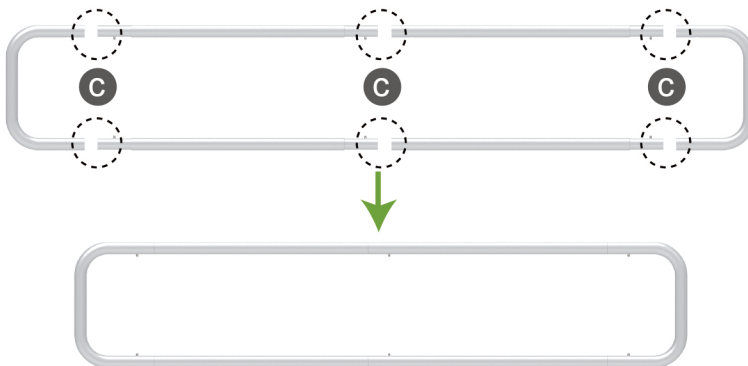
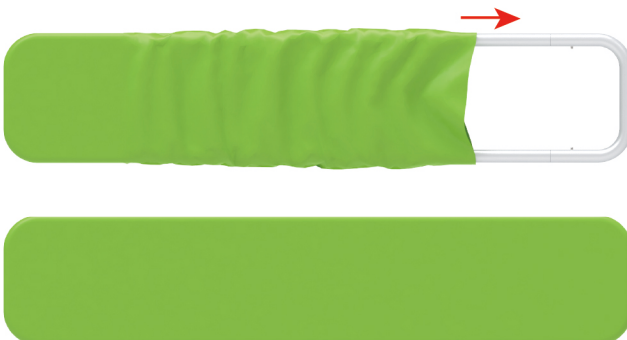
## STEPS

**STEP 04** Slide fabric banner on frame from top and zip up at bottom.

(1) Hardware



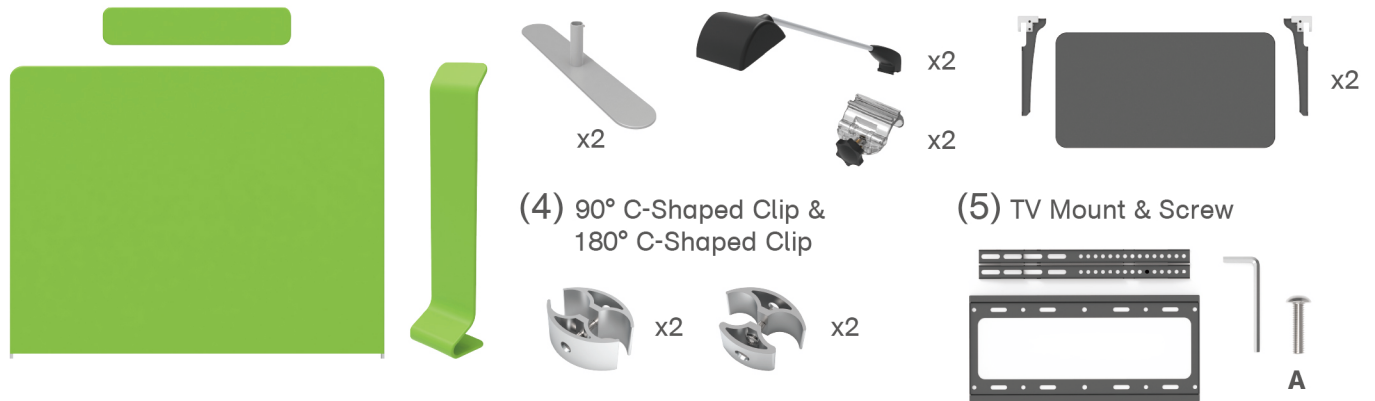
(2) Printed Graphic Fabric Banner (Optional)

**STEP 01** Connect poles according to labelings.**STEP 02** Slide fabric banner on frame from left and zip up at right.

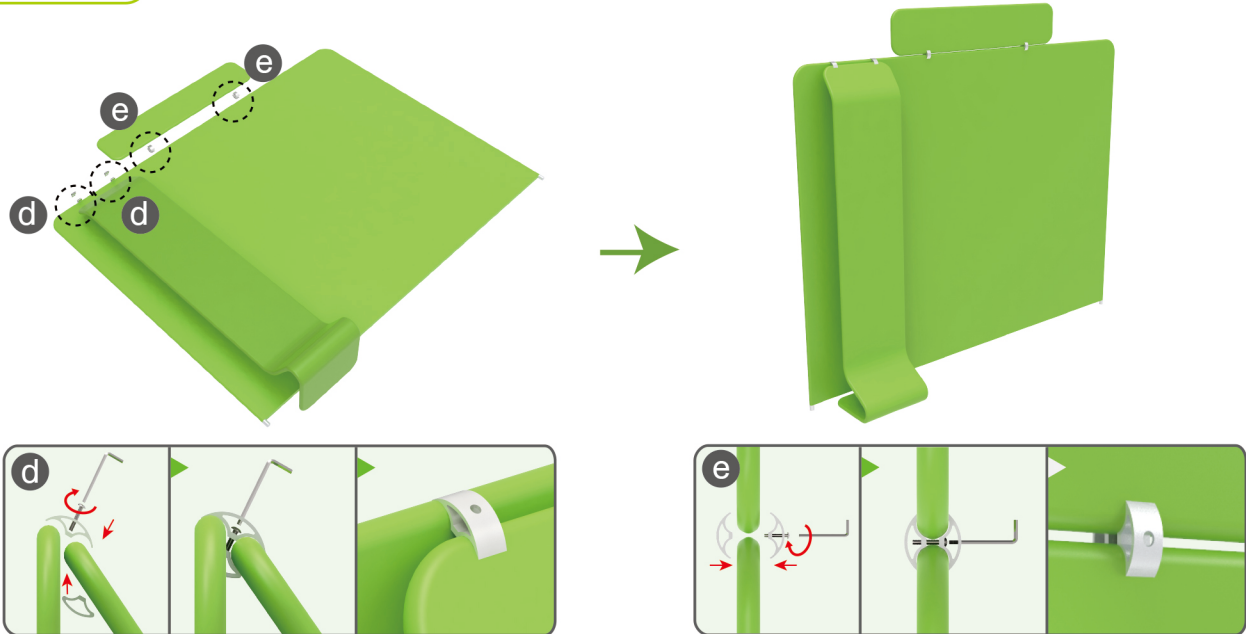


## STEPS

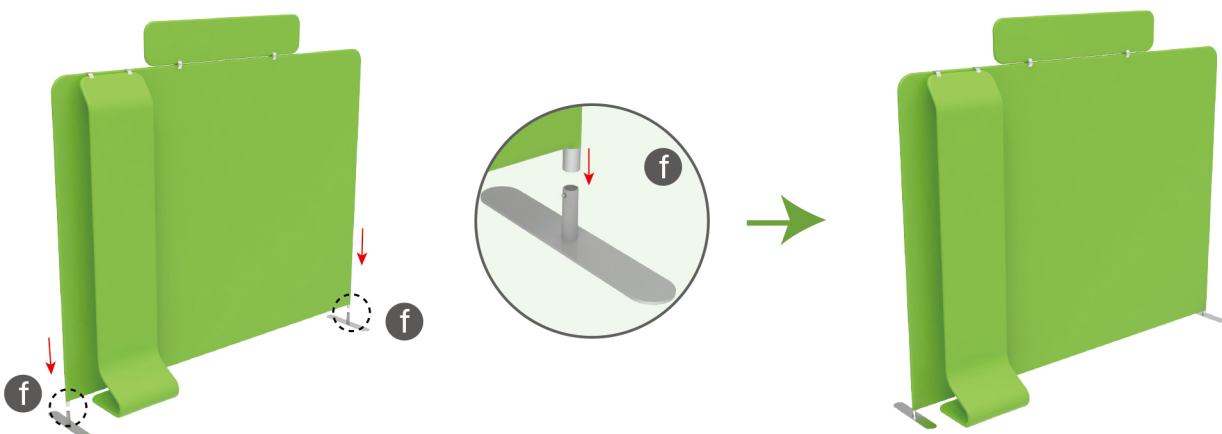
## Booth Set Assembly



**STEP 01** Interconnect display stands with C-shaped clips.



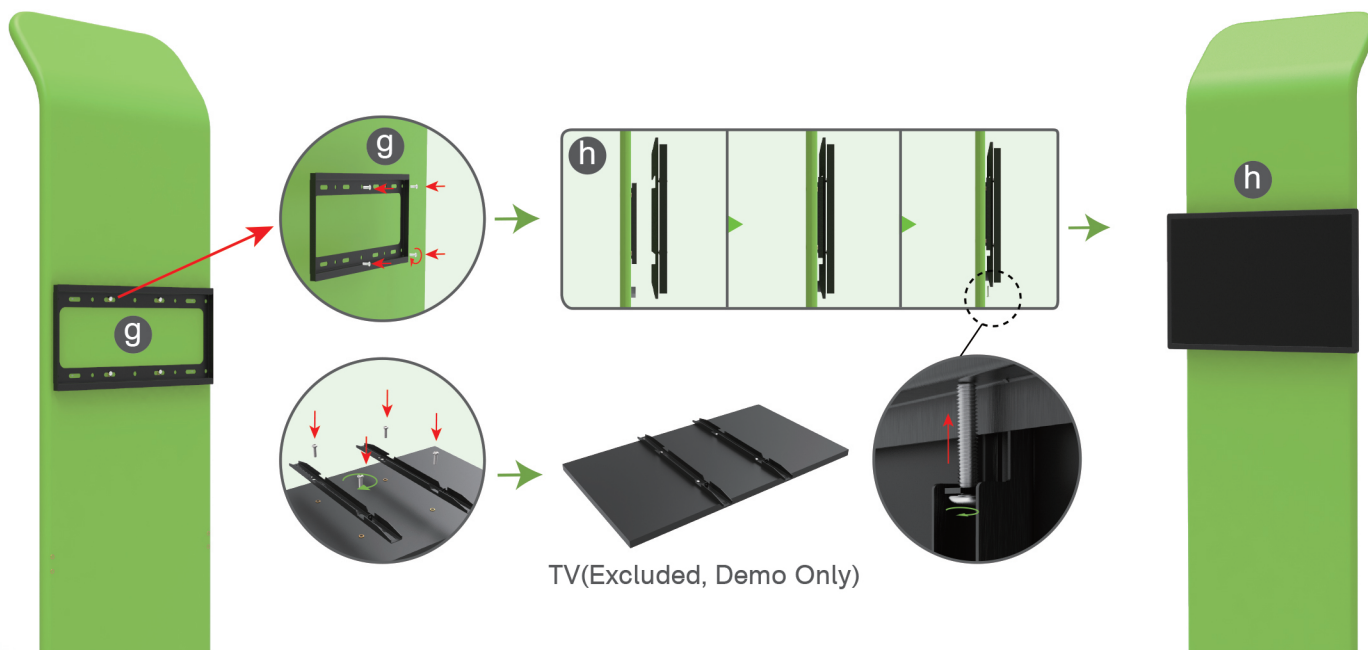
**STEP 02** Insert display stands onto feet by pressing their knobs.



## STEPS

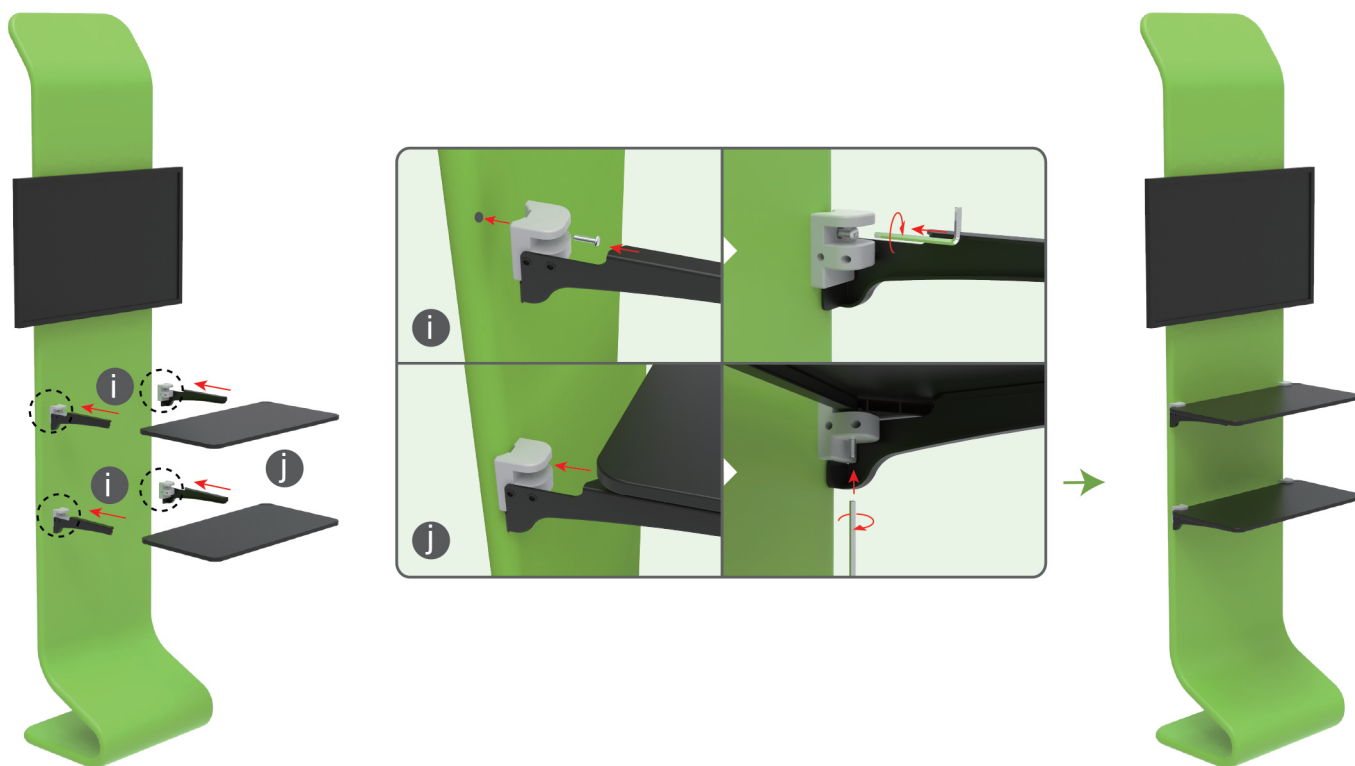
## STEP 03

Screw TV mount onto display stand & support brackets onto TV's back with hex wrench, hang TV onto mount & screw.



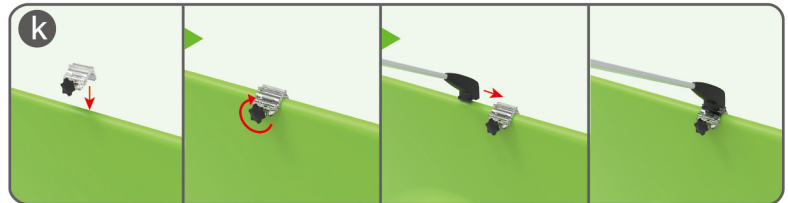
## STEP 04

Screw brackets onto display stand with hex wrench, insert shelves into slots.



## STEPS

**STEP 05** Screw light clips at top of display stands, slide lights onto them and adjust their direction.



10X10FT-BOOTH-F

## STEPS

(1) Durable Plastic Hard Case, Aluminum Support Poles

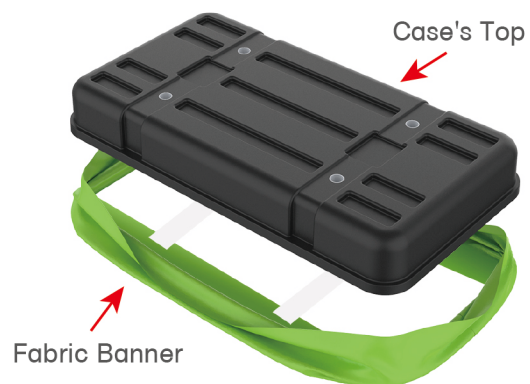


(2) Printed Graphic Fabric Banner



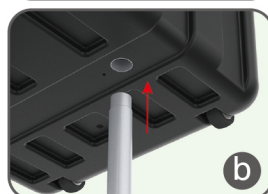
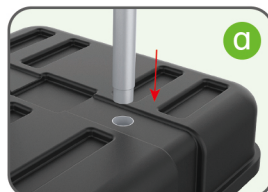
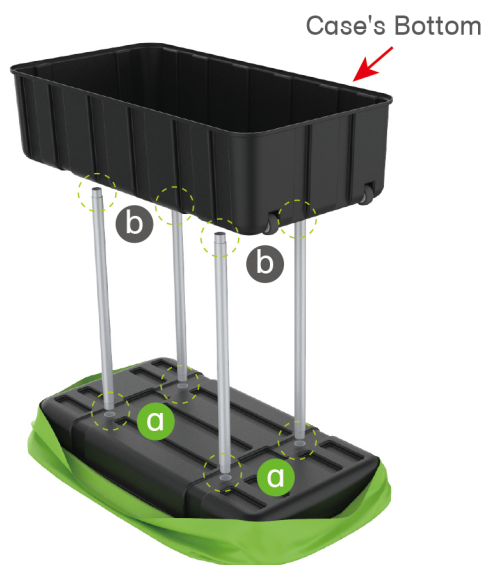
## STEP 01

Put hard case's top into fabric banner.



## STEP 02

Insert support poles into hard case's top &amp; bottom.





## STEPS

## STEP 04

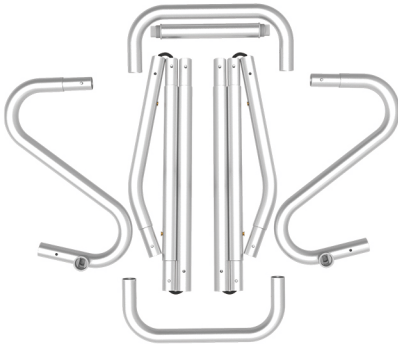
Wrap fabric banner from bottom to top & twist it to be smooth, lay hard case's intermediate panel on podium's top.



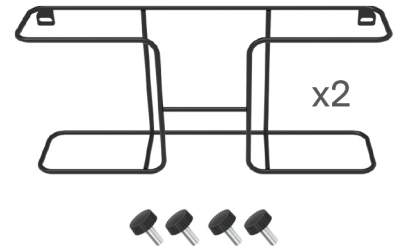


## STEPS

(1) Snap Tubes

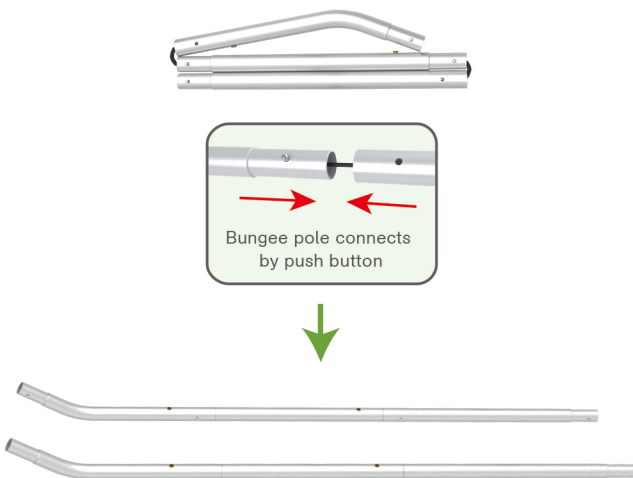


(2) Printed fabric banner

(3) Brochure rack x 2  
Screws x 4

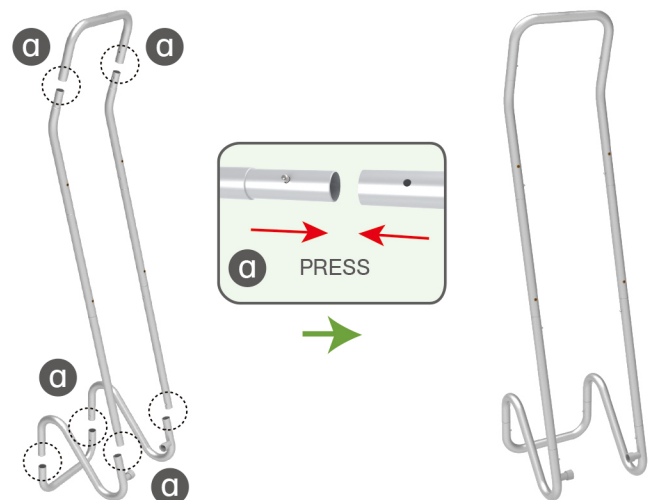
## STEP 01

To Connect the tubes according to the labellings

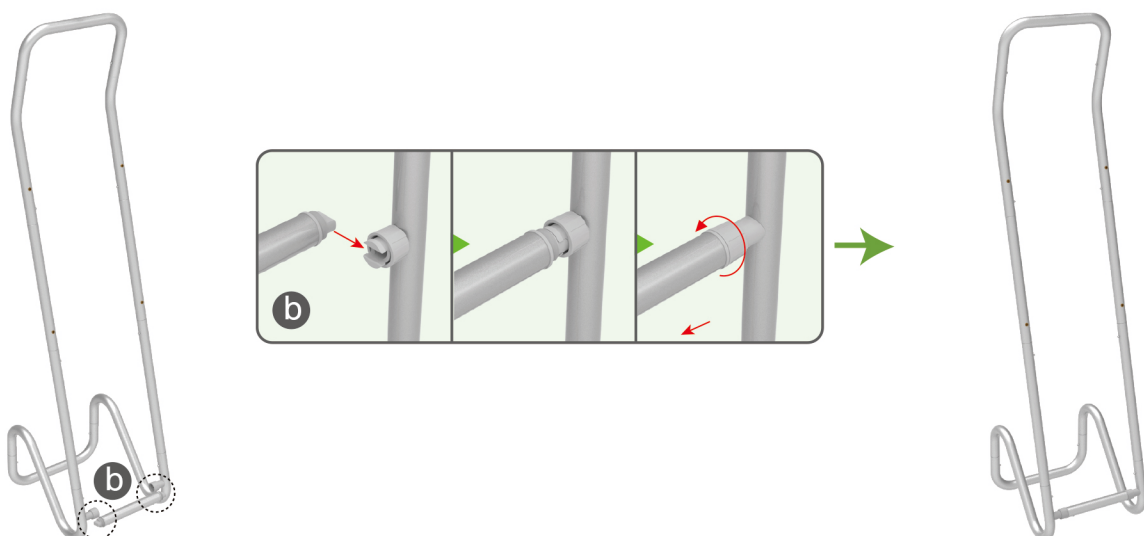


## STEP 02

To connect 2 long side tubes by the corner pieces



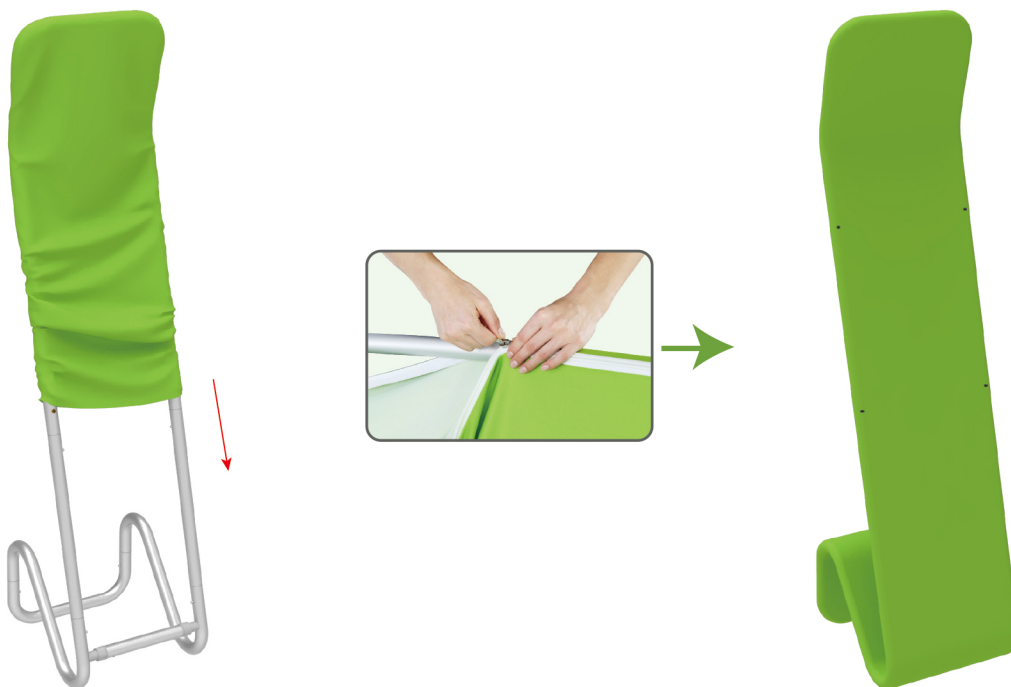
## STEP 03 To install the cross bar according to labellings



## STEPS

## STEP 04

To Wrap up the fabric banner from top to bottom and zip up.



## STEP 05

To install 2 racks by screws in position

