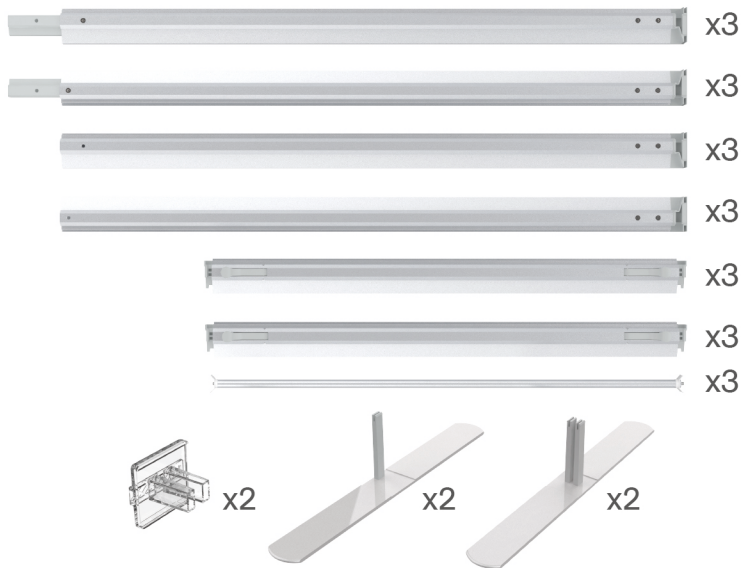


STEPS

(1) Hardware

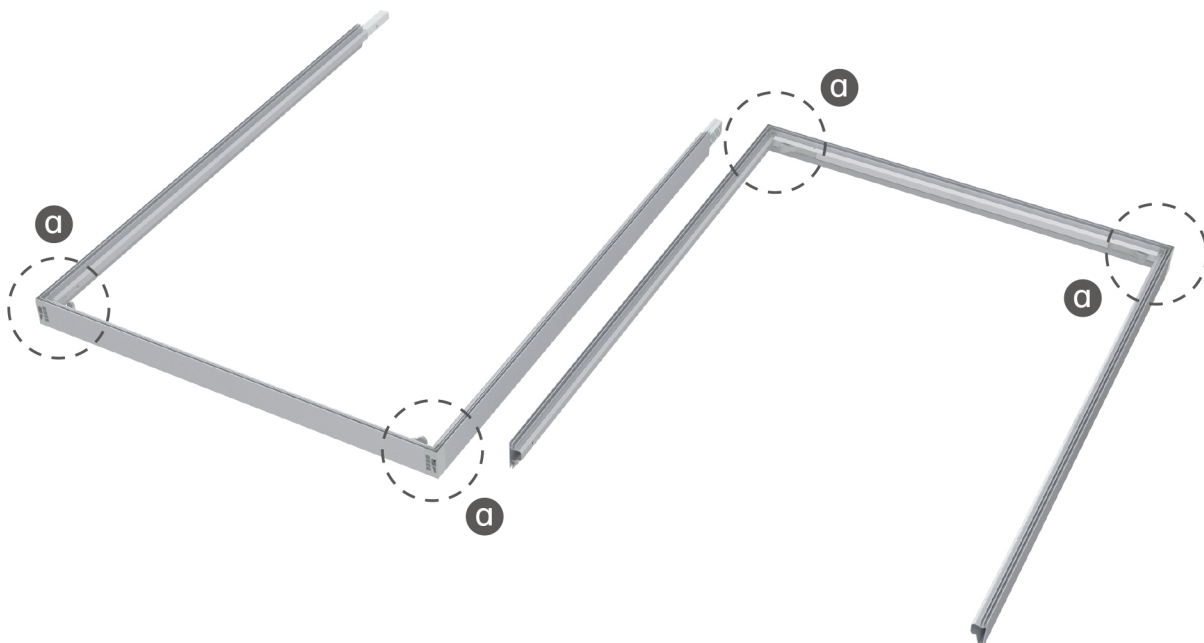
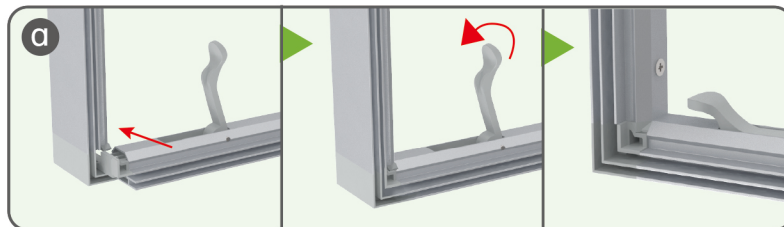


(2) Printed Graphic Fabric Banner (Optional)



STEP 01

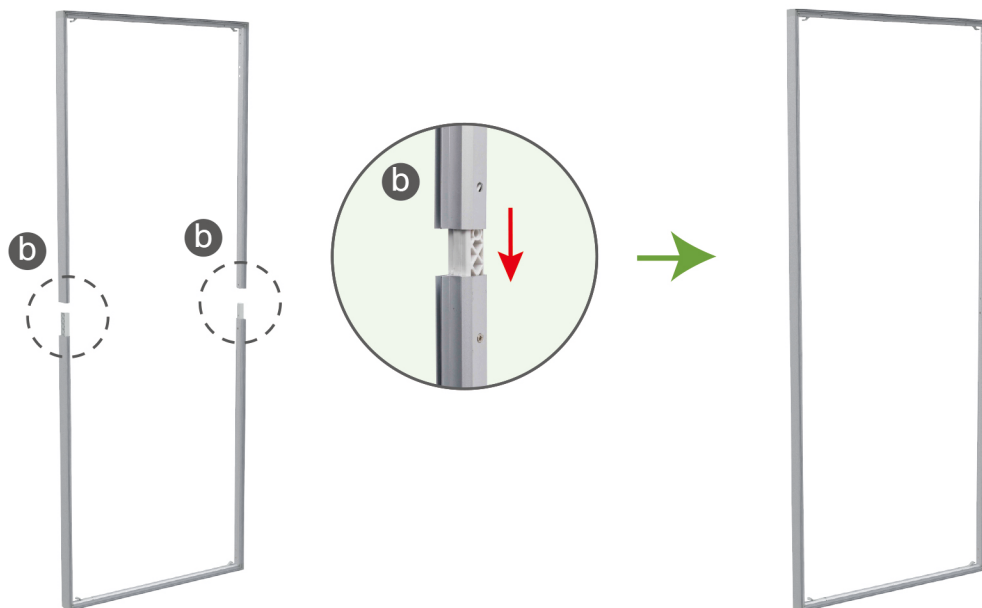
Interconnect aluminum profile by pulling up buckle to insert into & pressing down to lock.



STEPS

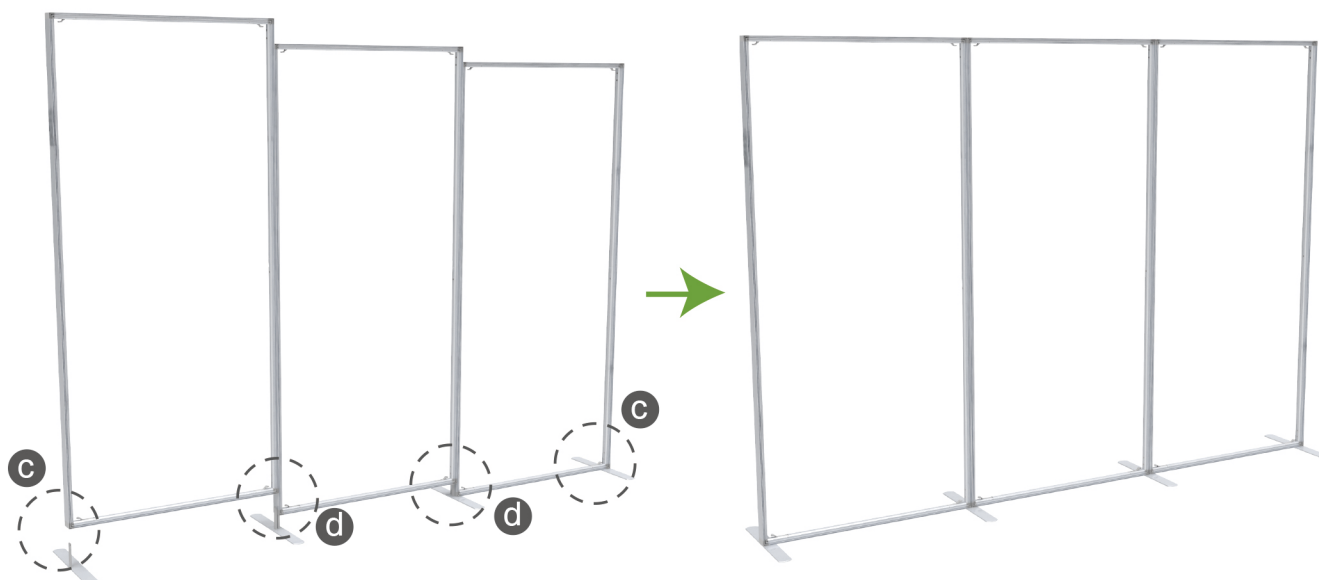
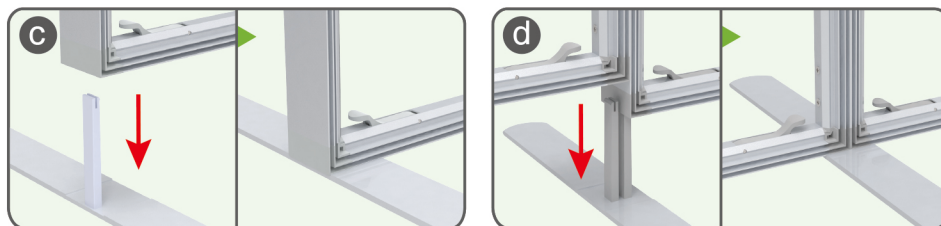
STEP 02

Interconnect upper & lower parts.



STEP 03

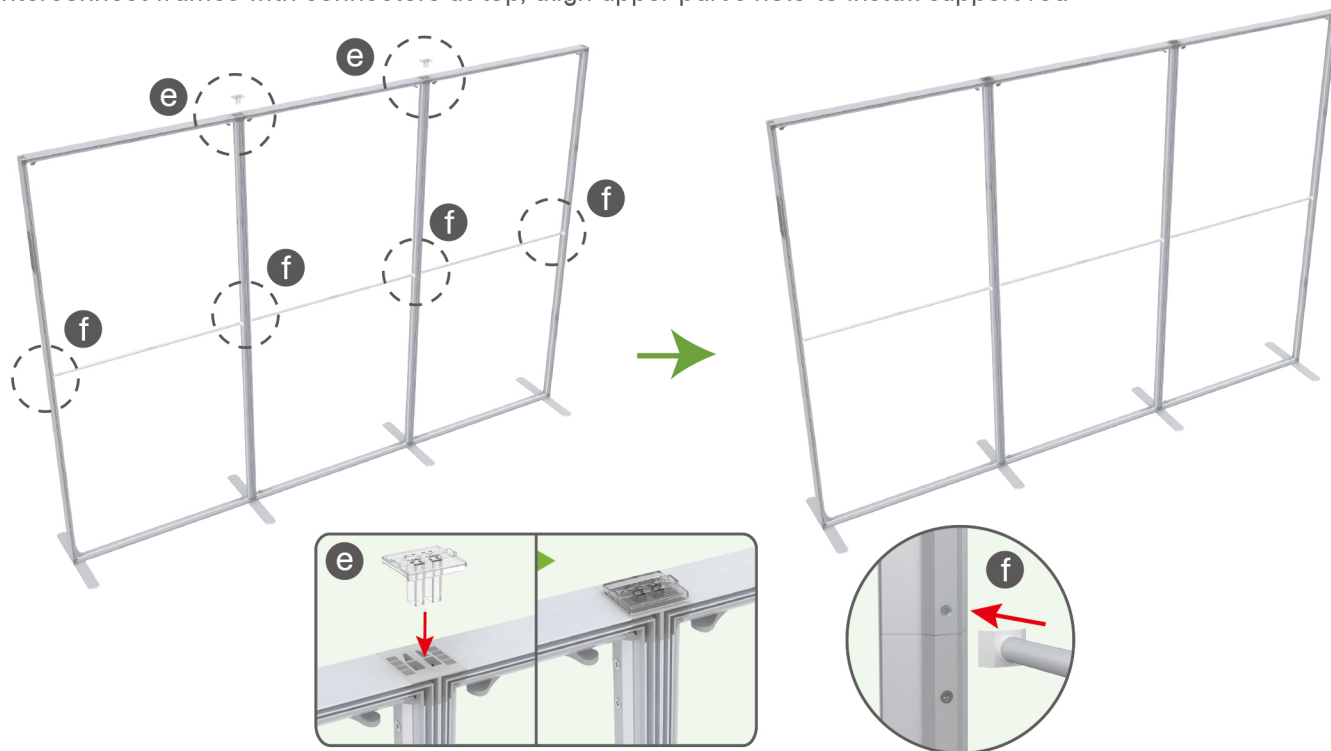
Insert interconnected aluminum profile onto feet.



STEPS

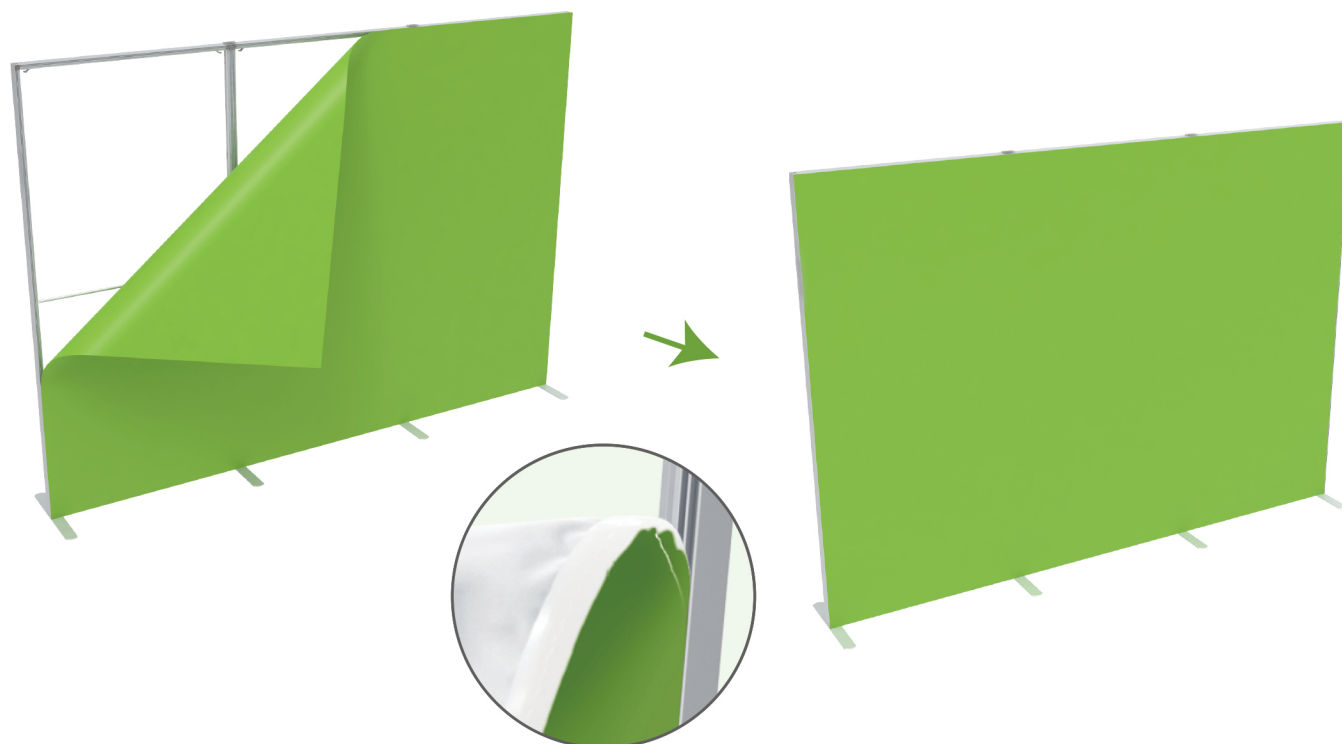
STEP 04

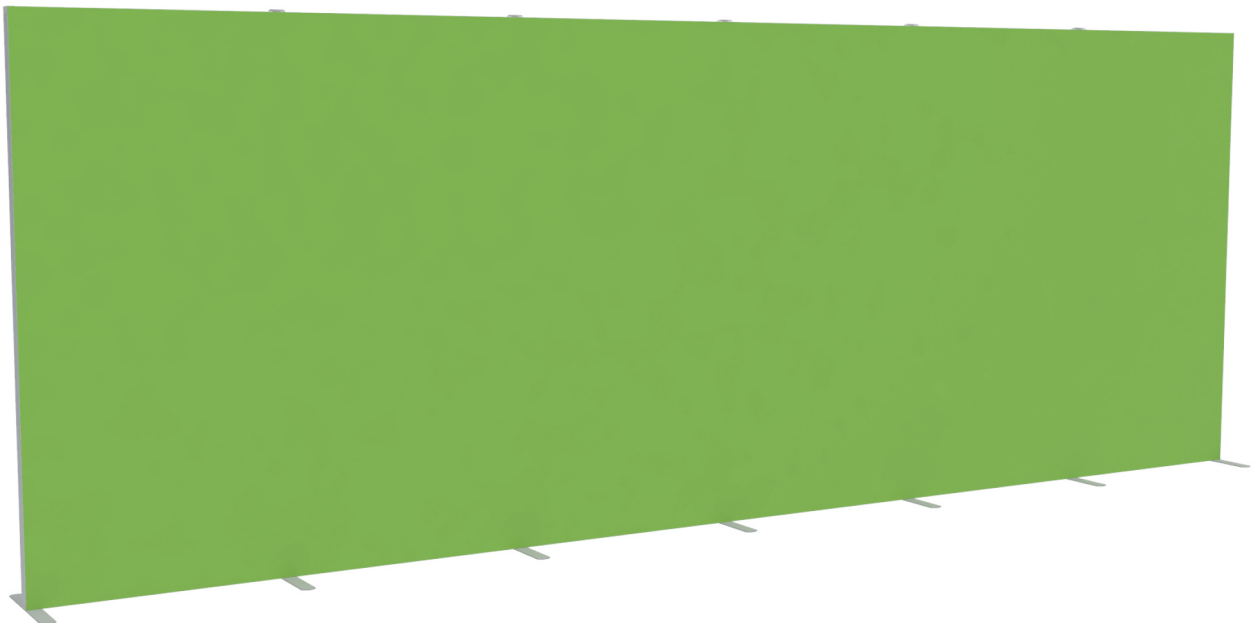
Interconnect frames with connectors at top, align upper part's hole to install support rod



STEP 05

Insert silicone edge graphic pieces into channels from corners. (Same Steps for Double Sides)



STEPS**SEG-B-02****SEG-B-03**